

# FARMSHINE

We rise every week to cover farmers and agribusinesses



Farmshine • Volume 45, Number 51 • \$20 one year

Mailed the day before →

August 23, 2024

## By breeders, for breeders: Holstein genetics go full circle

By DIETER KRIEG  
Farmshine Editor

BRATTLEBORO, Vt. — Holstein Association USA's website offers the best introductory paragraph for this article about Holstein Marketplace Sires. Key words are "by breeders for breeders." Please read on:

"Launched in January of 2019, this program provides a new choice of bulls offered by breeders for breeders. As you can see on the profiles of the bulls, Holstein Marketplace Sires truly offers something for everyone."

The original idea for such a service to Holstein breeders came from Holstein USA CEO John Meyer, who shared the concept with two close friends — both of them well known in Holstein circles, worldwide: John Burket, current president of the Association, and Dick Witter, founder and former owner of Taurus Service, Inc. Both got "on board" with the proposal without hesitation. All three of the men clearly saw the need.

Witter, self-described as a long-time member and friend of the Association, has always been a forward-thinking advocate for more member opportunities and services.

"I feel that if they (the Association) don't help to keep members in business, then they may be out of business," declared Witter, who has over 50 years of experience in A.I. He also believes that "it isn't right for the large genetic companies to have so much control over the business. I have seen breeders take a back seat to some A.I. companies, within most of which the farmer-member was actually a co-op member-owner," he explained further.

"We recognized that HAUSA should do something to help members stay in the genetic game that was becoming more controlled by major A.I. companies, which I refer to as genetic companies," Witter summarized.

"My view of HAUSA is that it is an association where every member is equal to every other member. It is only good business that members do business with fellow members. Holstein Marketplace Sires is an avenue to do so, plus there is no restricted use of semen. Non-



Dean Good of Dewgood Holsteins, Oconto, Wis., was among the first three HAUSA members to have a bull accepted in Holstein Marketplace Sires. Pictured here with visiting HAUSA CEO John Meyer, Dean shows his enthusiasm for the unique "by breeders, for breeders" business model. Photo submitted

sexed semen is also available, meaning that HAUSA members have more control of the future of Holstein genetics.

CEO Meyer minced no words portraying the program. "Holstein Marketplace Sires was (and continues to be) member driven," he stated, explaining that "a number of HAUSA members wanted a way in which they could market semen from their bulls. Some breeders felt as though traditional AI organizations were narrowing the number of breeders they were buying bulls from, and at the same time breeding and developing their own organizations' bulls.

"There was also the feeling among some breeders that they did not want to get involved with the contracts that some AI organizations were presenting to them. They were looking for a new option to not only market their bulls but also for purchasing semen as well," Meyer affirmed.

And so, Holstein Marketplace Sires was born without fuss or delay. The need was clear.

Dick Witter shared memories of how it took shape. "Carl Kent, a long time Holstein Association employee, and I worked together to develop the program, along with agreements, etc. Then Carl, John Meyer and I visited initial breeders who showed early interest in the program. The three of us selected and finalized deals on all early Marketplace Sires.

The program got its humble start with just three bulls:

- Speak-NJ of Dewgood-ET, offered by Dean and Wanda Good of Oconto, Wis.
- Golden-Oaks Imax Lotto, offered by Golden-Oaks Farm, Wauconda, Ill.
- Hurtgenlea Splnd Maurice-ET, offered by Hurtgenlea of Elkhorn, Wis.

Today, dozens of Holstein Marketplace Sires — bred by breeders, for breeders — are available. "In the 5+ years since Holstein Marketplace Sires was formed, it has grown from an idea and input from Holstein breeders to an excellent opportunity for Holstein breeders to market semen from their own bulls, while at the same time allowing other breeders to buy semen  
**turn to page 4**

### PERIODICAL • DO NOT DELAY

Attention, Juniors .....	2	Crossbreeding study .....	10
American Dairy Coalition .....	6	Dairy financial conference .....	7
Bird flu update, concerns ...	12-13	Market Moos .....	14
Chester County 4-H show .....	16	Morrison's Cove show .....	15
Crops event in Maryland .....	9	New England DHIA .....	8

“...your paper is  
**the only place**  
 we get *real* and *true* information.”  
 — J.G. New York

It's time.  
**Don't wait.**  
 Send in your subscription  
 request today. It's news  
 for you, real and true.



Two Years \$38 • One Year \$20

Name: \_\_\_\_\_  
 Address: \_\_\_\_\_  
 Town: \_\_\_\_\_ State: \_\_\_\_\_ Zip: \_\_\_\_\_  
 Phone or e-mail: \_\_\_\_\_ New / Renewal (Circle one)

Mail with payment to **FARMSHINE**, 342 E. Main St., Ste. 201, Leola, PA 17540

**Attention, Juniors!**  
**Your Harrisburg  
 show entries are  
 due by August 28**

HARRISBURG, Pa. — Entries for the Pennsylvania Junior Dairy Show are due August 28th. All Pennsylvania 4-H and FFA members in good standing are invited to participate. Entries must be owned or leased by the exhibitor since June 1, 2024, and partnership animals are not eligible unless the partnership is with a 4-H club or FFA chapter.

Each exhibitor may enter a maximum of five animals. All entries can be made online at <http://2024pajrdairyshow.fairentry.com>

There will be special awards for the overall best bred and owned heifer and overall best bred and owned cow in each breed. Additionally, transportation allowances ranging from \$50-100 per animal (based on county location) will be paid to exhibitors of animals who receive a placing at the show, and milking cows (with the exception of dry cows) will receive an additional \$50 for transportation allowance.

**Entries participating in both the Pennsylvania Junior Dairy Show on Saturday and the Premier National Junior Show on Monday must enter each show separately.**

Families that previously created a FairEntry account for their local fair or state dairy show may use this to sign up, and all other exhibitors will need to create a new FairEntry account.

All animals and exhibitors must meet eligibility and animal health guidelines found in the rules. These can be accessed from the Fair Entry show link above.

Show orders and ring assignments will be announced once entries have closed. Entries are due online by 11:59 p.m. on Wednesday, August 28. Please email [dro105@psu.edu](mailto:dro105@psu.edu) with questions about the show and [pa4H@psu.edu](mailto:pa4H@psu.edu) for online entry questions.

• **Entries for the All-American Showmanship Contest**, to be held on Sunday, September 15, will only be accepted online. The deadline to enter the showmanship contest is September 4, and the link to register for the All-American Showmanship Contest is <https://allamericandairyshow.com/youth-showmanship-contest>.

**Building Contractors:**  
 Our directory of building contractors runs the 2nd and 4th weeks of each month. Call our advertising department to find out how to be included.  
**717-656-8050**

**“Faster, better milkouts and higher quality milk.  
 Udder Comfort is the one that works!”**

— Matt Nealy



“We decided to get more regimented with our use of Udder Comfort™ and saw our SCC drop from 200,000 to 120,000.”

— Kyle Hirt, Mithva Farms, New Woodstock, NY  
 100 cows, 80 lbs, 120,000 SCC

“Whether they have visible swelling, or not, we make sure to apply the Udder Comfort spray to all fresh udders after each milking for the first 5 to 7 days after calving and see SCC drop right down.”

“Udder Comfort is the best product for fresh cows, any type of swelling, hard quarter, elevated SCC or mastitis. With the Udder Comfort Battery-Operated Backpack Sprayer, we do fresh udders after each milking for 5 days. It really helps our milk quality.”

— Brad Palmer, Pigeon Cove Farms, Warfordsburg, PA  
 440 cows, 94 lbs, 140,000 SCC



**UDDER COMFORT™**  
 Quality Udders Make Quality Milk

**Her Comfort is Our Passion!**

Softer udders ⇒ Faster milking  
 Better quality ⇒ MORE MILK

1.888.773.7153  
 uddercomfort.com

Helping reach their potential since 1998!



For external application to the udder only, after milking, as an essential component of udder management. Wash and dry teats thoroughly before milking.



“Udder Comfort is something we don't cut. It gets swelling out faster.”

“We see faster, better milkouts and higher quality milk.”

“We do every fresh cow for a week after calving. We mark high-count cows on DHIA and do them too. We tried other brands, but they don't work. Udder Comfort is the one that works!”

— Matt Nealy, Nealand Farms, Newville, PA  
 400 cows, 92 lbs, 100,000 SCC



USPS 509450 ISSN 0745-7553

Published by Farmshine LLC  
 in Lancaster County, Pennsylvania.

**1-YR. SUBSCRIPTION - \$20.00**  
**INTERNATIONAL SUBSCRIPTION - \$40.00**  
 Published every Friday except the week of Christmas

Dieter Krieg, Editor & Publisher  
 Melissa Johnson, Advertising Representative  
 Ashley Denlinger, Advertising Representative  
 Sue McCloskey, Secretary  
 Douglas Denlinger, Production Manager

Send subscriptions, news & advertising to:  
 FARMSHINE  
 342 E. Main St., Suite 201, Leola, Pa. 17540  
 Phone 717-656-8050 | Fax 717-656-8188  
[news@farmshine.net](mailto:news@farmshine.net) | [ads@farmshine.net](mailto:ads@farmshine.net)

Periodicals postage paid at Lancaster, PA  
 and at additional mailing offices.

**POSTMASTER: Send Address Corrections To:**  
 FARMSHINE  
 342 E. Main St., Suite 201  
 Leola, Pa. 17540

Copyright © 2024. Printed in USA. All rights reserved. No part of this publication may be reproduced in any form without prior written permission by the publisher. Information gathered herein is from resources considered reliable. Accuracy, however, cannot be guaranteed. All printed material is intended for your information and reading enjoyment and is not meant to disrespect or harm any group or individuals. Ads appearing in this paper are not to be considered as an endorsement by Farmshine for products or services offered.

Farmshine's staff reserves the right to refuse any and all material, including articles and advertisements that they determine do not fit the objectives of Farmshine.

# Crop art featuring conservation message unveiled at APD

PENNSYLVANIA FURNACE, Pa. — Ag Progress Days, Pennsylvania's largest outdoor agricultural exposition, recently partnered with Invest in Our Land, an organization dedicated to elevating the voices of farmers and ranchers nationwide about the importance of conservation practices and climate smart funding.

Ag Progress Days and Invest in Our Land worked with Kansas resident and world-renowned crop artist, Stan Herd, to bring his heralded artistry to Ag Progress Days. Herd unveiled a stunning 2-acre crop art installation, inspired by Wendell Berry's poignant poem "Below." Featuring the words "We Stand for What We Stand On," the art served as a visual testament to the unity and resilience of farmers in their fight for sustainable agriculture.

All attendees had the opportunity to catch a bird's-eye view of the installation from a hot air balloon. In addition to the balloon rides attendees had the opportunity to learn more about the importance of conservation funding through a series of educational events.



**SHADY LANE**  
Curtains LLC

## Industry Leader in AG Curtains



**Maximum protection in the Winter  
& Ventilation in the Summer.**



**Curtain Experts  
Most Durable  
Longevity**



[shadylanecurtains.com](http://shadylanecurtains.com) | 717-690-2003

# Full circle

from page 1

from those breeders' bulls without restrictions," Meyer observed.

**What are the qualification requirements for both the breeder and the bull to be considered for the program?**

"We have a wide variety of bulls in our program and we like to offer genetics that have deep pedigrees and have outstanding type, production and good numbers," Meyer answered. "The bull must have no haplotypes and whenever possible be from a proven maternal cow family. We like to market bulls that fellow members would want to use in their herds, those that will continue to advance the genetic progress of the Holstein breed," Meyer explained further.

**Who determines which cows qualify as bull mothers and what bull they will be mated to?**

Meyer answered: "We have a committee that decides what animals will be in our program. (Committee members are HAUSA staff members Tim Ziemba, Barbara Casna, Lyn-dsey Worden and John Meyer, along with Dick Witter.



**JOHN MEYER:** "We're unique in the fact that HAUSA does not own any bulls in the program. The breeder of the bull owns the bull, and we market the semen for the breeder. This program allows breeders to buy from breeders which has become quite popular!"



**DICK WITTER:** "It isn't right for the large genetic companies to have so much control over the business. I have seen breeders take a back seat to some A.I. companies, within most of which the farmer-member was actually a co-op member-owner."



**DEAN GOOD:** "The greatest blessing for us is it gave everyone the opportunity to breed and use elite bulls without restrictions. It benefits the whole breed. It's been very interesting to see Holstein Marketplace Sires develop and overcome the initial growing pains."



**JOHN BURKET:** "Considering the changing landscape of the our country's A.I. industry, it makes a lot of sense that Holstein USA would offer its members a reliable source of high quality genetics. By breeders ... for breeders!"

"We're unique in the fact that the Holstein Association USA does not own any bulls in the program. The breeder of the bull owns the bull, and we market the semen for the breeder. This program allows breeders to buy from breeders which has become quite popular!" Meyer shared further.

Most of the bulls are housed at Hawkeye Breeders Service, Inc. in Iowa. Founded in 1969, their housing and collection facilities serve independent breeders from all over the country. Owners of the bulls receive substantial royalties on semen sales and are responsible for housing and semen collection costs.

Purchasing Holstein Marketplace Sires semen is easy. Interested breeders may purchase semen by calling HAUSA Customer Service: 1-800-952-5200 or by visiting: [www.holsteinusa.com/marketplacesires/index.jsp](http://www.holsteinusa.com/marketplacesires/index.jsp) or by contacting the Holstein Association USA regional sales representative in their area.

Worth noting too is that Holstein Marketplace Sires has distributors selling semen across the country, as well as in Canada, Australia and the European Union, where, as Witter pointed out:

**"No restrictions on semen usage or offspring is good business. Traditional A.I. has too many handcuffs."**

Ziemba, based at the Fort Atkinson, Wis. HAUSA office, serves as manager of Holstein Marketplace Sires).

"To date, the Committee hasn't been directing matings as such; breeders come to us and let us know what bulls they would like to have considered for the Holstein Marketplace Sires program," Meyer continued.

**"History shows us that it has been the Holstein Association member/breeder who has provided the genetics to advance the profitability of the Holstein cow. In our program, mating decisions are strictly the decision of the cow owners."**

## Penn State researchers receive USDA-NIFA grant to study male cattle genetics

UNIVERSITY PARK, Pa. — More than 60% of dairy cows in the United States are bred via artificial insemination. While significant advances have been made in understanding cattle genetics, particularly in relation to milk production and other economic traits, there is still much to learn about the genetics underlying the reproductive organs and cells in cattle.

So acknowledges a team of researchers in the Penn State College of Agricultural Sciences that was recently awarded a USDA grant to study the genetic mechanisms underlying the development of the testis in cattle and its role in sperm production.

The \$650,000 grant, awarded by USDA's National Institute

of Food and Agriculture, will fund research led by Wansheng Liu, professor of animal genomics. Liu and his team will specifically investigate transcriptome dynamics — how all the messenger molecules expressed by an organism's genes interact to regulate cellular functions — and gene regulatory networks during testis development and sperm production in cattle.

One of the goals for the project, Liu explained, is to identify genetic markers associated with bull fertility. This will help scientists pinpoint genes that influence fertility traits, enhancing the ability to select for these traits in breeding programs.

"This project is crucial for completing the bovine genome map and understanding the genetic processes underlying testis development and sperm production in cattle," Liu added.

# "TODAY'S THE DAY"

Aim for 12 month calving interval & 50k SCC. These are two of the biggest "dairy profit factors."

Many use **IMMU-PRO & STAND STRONG** to help them get there.

**Start today - 920.650.1631**  
[www.alphageneticsinc.com](http://www.alphageneticsinc.com)



Also **BE A DAIRY HERO**. CALL 202-224-3121 and tell your Senators to co-sponsor and vote YES to S1957 "WHOLE MILK FOR HEALTHY KIDS ACT"

Also call Senate Ag Chair Debbie Stabenow at 202-224-4822 and ask her to please co-sponsor & pass S1957 so children in public schools can again enjoy healthier whole milk. USA is watching you.



**SUPPORT 97milk.com. They support you!**  
GOOD NEWS 24-7-365. 1-605-477-2279



DRINK  
**WHOLE MILK**  
— School Lunch Choice —

**Citizens for Immune Boosting Nutrition**

**97milk.com**



- Improve Livestock Traction in New & Existing Barns
- Better Drainage for Dry & Healthy Hooves

**CUSTOM CONCRETE GROOVING & SLOT CUTTING FOR ALLEY SCRAPERS**

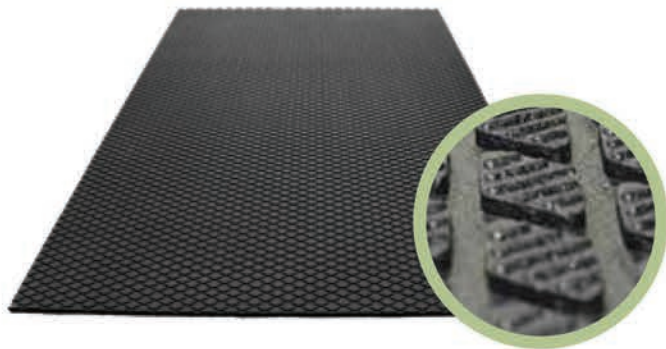
1-800-228-5471

[www.DMsafetygrooving.com](http://www.DMsafetygrooving.com)

# RUBBER FLOORING INNOVATION FOR COW COMFORT & LONGEVITY

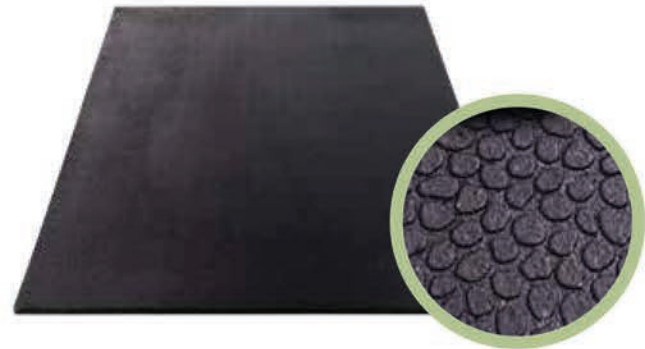


A NORTH WEST RUBBER COMPANY



## MaxGrip

High-profile, raised diamond-grip surface ensures maximum foothold for cows, boosting their confidence and reducing slips and falls.



## PebbleTop

Soft, claw-friendly surface not only boosts comfort, reducing claw lesions and lameness, but also prevents manure from building up for a more hygienic environment.



*"The new **MaxGrip** mats provide good grip for the cow's hooves to push down into and catch footing. The more comfortable our cows are, the more milk production we see... it's working out really well."*

- Mike Hershey, Dairy Manager | Kreider Farms | Manheim, PA

**Over 25,000 Barn Installs & Counting**  
Scan the QR code to watch a short video about Krieder Farms



**animat.ca**  
f Instagram YouTube in



## YOUR PARTNER IN DAIRY SOLUTIONS!

Auburn, NY.....	315-252-9270	Rocky Mount, VA.....	540-489-5800
Batavia, NY.....	315-252-9270	Belleville, PA.....	717-935-7422
Clymer, NY.....	716-450-9967	Chambersburg, PA.....	717-352-7606
Conewango Valley, NY.....	716-358-9152	Roaring Spring, PA.....	814-224-0070
Mechanicville, NY.....	518-652-2383	Somerset, PA.....	814-444-8502
Harrisonburg, VA.....	540-867-3251	Troy, PA.....	570-297-2012

MAIN OFFICE  
**LEOLA, PA**  
717-656-3307

## Auction Guide

**AUG. 23**, 7 p.m. 46th Annual Lebanon County Showcase Sale, Lebanon, Pa. Sale managed by Daniel Brandt Pedigrees.

**AUG. 23**, 7 p.m. King Family Holstein Herd Dispersal, Ronks, Pa. Sale managed by Double E Auction Service.

**AUG. 28**, 10:30 a.m. Dairy Cow & Heifer Sale, New Holland Sales Stables, New Holland, Pa. Sale managed by New Holland Sales Stables.

**AUG. 29**, 7 p.m. Special Dairy Sale, Fisher's Quality Dairy Sales, Ronks, Pa. Sale managed by Fisher's Quality Dairy Sales.

**AUG. 30**, 7:30 a.m. Horse Consignment Auction, Penns Valley Livestock, Centre Hall, Pa. Sale managed by Penns Valley Livestock.

**AUG. 30**, 7 p.m. Mifflin County Summer Event, Reedsville, Pa. Sale managed by Michael P. Yoder.

**SEPT. 5**, 11 a.m. Soltys Dairy Herd

Dispersal, Milton, Pa. Sale managed by Fraley Auction Company.

**SEPT. 6**, Know What You Buy Heifer Sale, Middletown, Pa. Sale managed by Pa. Holstein Association.

**SEPT. 6**, 6 p.m. Special Heifer Sale, Jersey Shore Livestock Market, Jersey Shore, Pa. Sale managed by Jersey Shore Livestock Market.

**SEPT. 6**, 6 p.m. Feeder Cattle Sale, New Holland Sales Stables, New Holland, Pa. Sale managed by New Holland Sales Stables.

**SEPT. 7**, 11 a.m. The Fraley Flare-Up Auction, Muncy, Pa. Sale managed by Fraley Auction Company.

**SEPT. 14**, 8 a.m. Fraley's Annual Fall Consignment Auction, Muncy, Pa. Sale managed by Fraley Auction Company.

**OCT. 26**, Nittany Lion Fall Classic Sale, University Park, Pa. Sale managed by Pa. Holstein Association.

## Advertiser's Index

Agri-King.....24	Leabrook Ag.....8
Agri-Trac.....9	Martin's Roofing.....8
Alpha Genetics (Immu-Pro)....4	Meyer, Dick Company.....4
Beiler Industries.....20	Mifflin County Summer Event .21
Beitzel Spraying.....6	Morrissey Insurance.....14
Brubaker, Rufus Refrigeration .6	Natural by Nature.....7
Building Directory.....10	Nelson & Sons Concrete Gr...10
Cedar Crest Equipment.....17	New Holland Sales Stables...19
Daniel's Farm Store.....6	Nicholas Meat.....16
Esch Hay Equipment.....7	Pa. Holstein Association..20,22
Farmer Boy Ag.....15	Patz.....16
Fisher's Quality Dairy Sales .19	Penns Valley Livestock.....19
Fisher & Thompson.....5	Power Systems Electric.....13
Fraley Auction Company..21,22	Precast Systems.....19
Gehm, L.R.....8	Priority IAC.....11
Golden Grain Seed Clean....20	Rissler Conveyors.....20
Holstein Marketplace Sires...23	Shady Lane Curtains.....3
Horst Grain Roasting.....20	Sollenberger Silos.....20
Innovative Dairy Solutions....13	Sturdy Built Manufacturing....7
JBS.....6	Triple M Farms.....20
Jersey Shore Livestock.....19	Udder Comfort.....2
JRS Ag Assemblies.....12	Weaver's Toasted Grains.....9
Keystone Concrete Products .12	Zartman Farms.....10
King's AgriSeeds.....8	Zimmermans Glass Strg.....20
Lancaster DHIA.....8	

## Dairyman's Datebook

**AUGUST 24**, noon, Iowa Holstein Open House and Picnic at KCCCK Genetics, the Kruse Family, 1507 300th Avenue, Dyersville.

**AUGUST 28**, 8 a.m. - 2 p.m. Crop Showcase, Clear Meadow Farm, 3116 Troyer Road, White Hall, Md.

**AUGUST 29**, 6:30 p.m. Lebanon County Holstein Association Field Night at Silo-View Farm, 769 Ono Road, Annville, Pa.

**SEPTEMBER 11**, 8 a.m. Dairy Financial and Risk Management Conference, titled "Future-Proofing Our Farms." Location: Sheraton Harrisburg Hershey Hotel, 4650 Lindle Rd, Harrisburg, Pa.

**SEPTEMBER 21**, Farm Aid Festival, at Broadview Stage, Saratoga Performing Arts Center (SPAC), Saratoga Springs, N.Y.

**SEPTEMBER 27-29**, Virginia State Fair dairy shows at the Doswell Fairgrounds, 13191 Dawn Blvd., Doswell, Caroline County.

**OCTOBER 1-4**, World Dairy Exposition, Alliant Energy Center, Madison, Wis.

**OCTOBER 17-20**, Pennsylvania State Grange Session, Pittsburgh Marriott North, 100 Cranberry Drive, Cranberry Township, Pa.



Register



Read

## Your input invited! ADC Webinar on proposed federal milk pricing changes slated Aug. 29

GREEN BAY, Wis. — “Those who don’t learn from history are doomed to repeat it: An interactive webinar on USDA’s proposed federal milk pricing changes” will be presented by the American Dairy Coalition on Thursday, August 29 from 2:00 to 3:00 p.m. EST.

Topics to be discussed include the following questions: Is USDA really proposing make allowance increases of 75 cents to \$1.00 per hundredweight, without mandatory audited cost surveys? Two ‘movers’ for Class I? How will that work, and did the hearing address the potential unintended consequences? What will delayed milk composition updates cost dairy farmers?

American Farm Bureau Federation Economist Danny Munch is the featured presenter, and he will share AFBB analysis hot off the press. Munch’s profile covers many areas of agriculture, especially dairy policy and markets.



Danny Munch

He attended most every one of the 49 days of the USDA Federal Milk Marketing Order hearing that concluded in January, presenting testimony and questioning witnesses.

Additional panelists include Sherry Bunting, ag journalist and author of Milk Market Moos in Farmshine as well as Sam Schwoeppe, an Indiana dairy producer. The discussion will be moderated by Kim Bremmer of Ag Inspirations.

“We want input from state dairy organizations and other dairy farming stakeholders as we prepare our official comments on USDA’s recommended decision for the *Federal Register* Sept. 13th deadline, which organizations and individuals may choose to sign onto,” said Laurie Fischer, ADC CEO.

A Discussion Draft White Paper entitled “New market dynamics, new FMMO pricing rules, what’s it all mean?” has been prepared. Scan the blue QR code to read it. Or go to <https://qrco.de/DraftPaper>

Scan the red QR code to register for the webinar. Or go to <https://qrco.de/bfKCy1>

Rufus  
**Brubaker**  
Refrigeration LLC  
Toll Free 1-866-665-3525

**New & Used  
Quality Milk Tanks**  
400 Gallon    1000 Gallon  
700 Gallon    1500 Gallon  
800 Gallon

**Walk-In Coolers and  
Freezers, Panels and  
Doors Available.**



**Stop in  
for your  
Silage  
Covers**

**Bunker Covers**

5 mil, Laminated, Black and White

**Round Silo Covers**

4 mil, Black for 12 to 24 ft. diameter silo



**Magnavia**

Water Soluble Silage Inoculant



**FermenAider WS**

Water Soluble Silage Inoculant

**Daniel's Farm Store LLC**

324 Glenbrook Road, Leola, PA 17540  
717-656-6982 • Mon.-Fri. 7-6, Sat. 7-12

**(JBS)**

Souderton, PA

**SELL YOUR CATTLE!**

**PURCHASING  
CULL COWS**

**Same-Day Payment  
NO Fees • NO Commission**

For more information:  
Direct: (970) 506-8215  
Duff George: (717) 594-8630



Livestock Buying Stations are OPEN:

7195 Molly Pitcher Hwy  
Greencastle, PA 17225  
Monday & Wednesday  
9 a.m. - 2:30 p.m.

503 School Rd  
Denver, PA 17517  
Tuesday & Thursday  
9 a.m. - 2:30 p.m.

Contact Doug Musser: (267) 371-9824

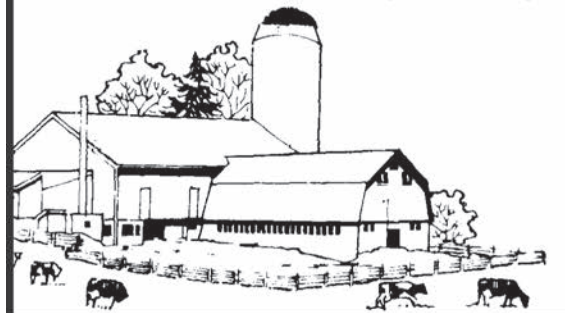
**(JBS)**

Learn more about our brands at  
[jbsfoodsgroup.com](http://jbsfoodsgroup.com)

249 Allentown Rd | Souderton, Pennsylvania 18964 USA

**WHITE WASHING with  
ADVANTAGE FARM WHITE**

- Dries White • No Wet Floor
- Is Compatible With Disinfectant And Fly Sprays
- Does Not Rub Off Easily
- Washes Off Windows And Pipelines Easily



**BARN CLEANING SERVICE AVAILABLE  
WITH COMPRESSED AIR**

To have your barn cleaned with air it will clean off dust, cobwebs and lots of the old lime. This will keep your barn looking cleaner and whiter longer.

**CALL US ABOUT  
ON THE FARM FLY CONTROL**

Serving Southeastern Pa. And More

**Beitzel Spraying**

Witmer, PA 17585 • 7:00 A.M. to 5:00 P.M.  
717-392-7227 or Toll Free 1-800-727-7228

**CERTIFIED COMMERCIAL APPLICATORS  
LICENSED 45 YEARS EXPERIENCE INSURED**

*Radio Dispatched Trucks*  
**Barn Spraying Is Our Business  
Not A Sideline  
Spraying Since 1961**

# Dairy financial / risk management conference set for Sept. 11

Sessions will focus on dairy supply impacts, emerging technologies at the farm level and more

HARRISBURG, Pa. — Registration is now open for the 15th annual Dairy Financial and Risk Management Conference, titled “Future-Proofing Our Farms.”

Designed to help attendees protect their risk, navigate the ever-changing dairy marketplace, and make financial decisions with the future in mind, the conference is planned for Wednesday, September 11, at the Sheraton Harrisburg Hershey Hotel, 4650 Lindle Road, Harrisburg.

Dairy financial consultants, lending representatives, and interested dairy producers can register online at [www.centerfordairyexcellence.org/financial-conference](http://www.centerfordairyexcellence.org/financial-conference).

The conference will feature expert speakers who will lead four sessions during the one-day event:

- **Expecting the Unexpected:** 2024 Dairy Supply and Market Impacts With Danny Munch. No one could have predicted the Baltimore Bridge collapse this past Spring and the ripple effects it caused on one of the nation’s busiest ports and our overall supply chain. Danny Munch will discuss some of the unexpected impacts of recent regional events and offer his perspective on dairy markets and supply/demand factors.

- **Calculating Where PA Stands:** Annual Dairy Performance Indicators with Rob Goodling and LeeAnn McLaughlin. Where does Pennsylvania dairy stand? As part of an annual joint project between Horizon Farm Credit, Penn State Extension, and the Center for Dairy Excellence, you’ll hear the 2024 takeaways and data points that have been identified through 17 key benchmarks calculated from Pennsylvania dairy farm data. These annual benchmarks compare individual dairy operations to how the top dairies in the data set are performing financially from year to year.

- **Smoothing the Road for the Future:** Succession Planning and Business Continuity with Mike Hosterman and Jennifer Wetzel. As we strive to future-proof our farms, smoothing the road for future generations to



No one could have predicted the Baltimore Bridge collapse this past Spring and the ripple effects it caused on one of the nation’s busiest ports and our overall supply chain.

ensure business continuity is one of the most important parts of succession planning. During this session, Mike Hosterman and Jennifer Wetzel will dive into some of the family dynamics they encounter when working with dairy farm families and strategies for achieving business continuity and stability when working with multiple generations.

- **Highlighting Innovation** in dairy farming, a producer panel with Alan Waybright (Mount Rock Dairy), Ben Peckman (Slate Ridge Farm) and Matt Brake (Oakleigh Farms). These three dairy producers will share their perspective on the technology of the future and what emerging technology they are looking at and currently using. From robotics to automated cropping tools, these producers will share their honest outlook on how technology impacts efficiency, innovation and profitability.

*“We all know that dairy markets are never foolproof. At this year’s Dairy Financial Conference, our speakers will lead timely sessions that will help us brainstorm ways we can be future-proof at the farm level and when working with our dairy farm clients,” said LeeAnn McLaughlin, dairy policy and industry relations manager at the Center for Dairy Excellence. “From dairy supply and annual performance indicators to succession planning, business continuity, and emerging technologies, we look forward to hearing from future-minded individuals from across the dairy industry.”*

The conference will be held from 8 a.m. to 4 p.m. The cost to attend is \$260 per person, discounted to \$210 for those who are representatives of the Center for Dairy Excellence Allies for Advancement.

**Learn more about each speaker:**

- **Danny Munch** works as an economist within American Farm Bureau Federation (AFBF)’s public affairs department with a profile that covers issues including dairy markets and policy, transportation & infrastructure, natural disasters and more. He graduated from Cornell University with a master of science degree in agricultural and food economics in 2020 after completing his thesis: *Assessing the Value of Agricultural Cooperative Membership: A Case of Dairy Marketing in the United States*. Throughout his graduate career, Danny was heavily involved with providing valuable strategy insights to farmer-owned cooperatives and agribusinesses, including hands-on projects with Ocean Spray, Palabana Fisheries (a tilapia producer in Zambia, Africa), and with Farm Credit East. Prior to joining the American Farm Bureau Federation, Danny worked as a protein market commodity analyst for Uner Barry, focusing on protein crop markets.

- **Rob Goodling** is an agricultural business consultant with Horizon Farm Credit in the Lewisburg office. He has over 20 years of experience helping producers understand their farm business records and analyses to grow their operations.

- **Jennifer Wetzel**, an advocate dedicated to serving Pennsylvania’s farm and agri-business community, has spent the past 15 years providing legal counsel to various agricultural businesses across the state. Her knowl-

turn to page 11

## Natural By Nature is looking to sign up Organic Dairy Producers.



- Family-owned operation that has been in business for 30 years.
- Have our own processing plant where we bottle our organic dairy products.
- Offer great quality premiums and an optional 100% grass-fed premium.
- No hauling, labs, or marketing fees, no equity deductions, or quotas.
- We are looking to expand our producer group in Lancaster, Berks, Perry, and Dauphin County.

For additional information, please reach out to Amy Simms at 484-643-6714.

Do you have heavy crops such as Cereal Rye, Triticale, 1st cutting Alfalfa?

## HAY TEDDERS

Do you need a Tedder that can handle these crops?

Contact Esch Hay Equipment for a Tedder that is built to handle these crops!

**New tedders have a:**

- One year warranty • Hyd. fold and tilt
- Lifetime warranty on tine arms
- New tine design with 4x less breakage
- Four sizes to fit your needs
- 2-star 9 ft. wide
- 4-star 18 ft. and 22 ft. wide
- 6-star 32 ft. wide



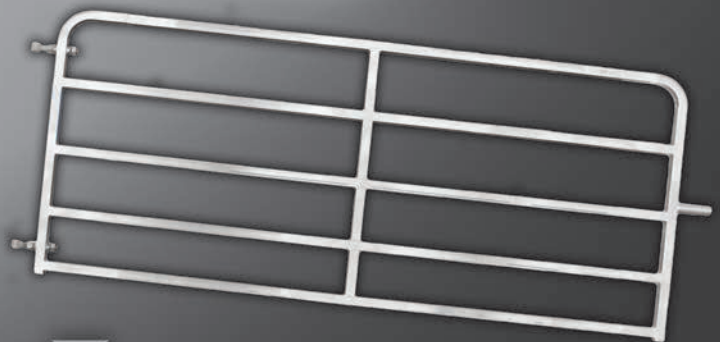
Call us for a dealer near you or stop by our location at:



**Esch Hay Equipment LLC**  
3230 E. Gordon Rd., Gordonville, PA 17529  
717-768-0600



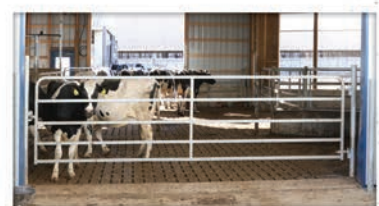
Check our stock for the size you need! Many length choices from 4' through 16'



## Pre-Fab Square Tubing Galvanized Gates & Panels

### In Stock for Quick Pickup!

- 48" x 5-Bar height
- Galvanized square tubing 1.75" x 14 gauge
- Gates include 6" latch stubs and female adjustable hinge pins
- Full line of galvanized mounting hardware in stock



Call 866-543-5116

sales@sturdybuiltmfg.net  
260 S. Muddy Creek Rd. Denver, PA 17517



Request a FREE Gates & Fencing Equipment Guide!

Lancaster DHIA

New England, New Jersey, New York

JULY 2024

NEW HAMPSHIRE

Cheshire County

Table with 5 columns: Name, HO, JE, XX, BS

Grafton County

Table with 5 columns: Name, HO, JE, XX, BS

Table with 5 columns: Name, HO, JE, XX, BS

Merrimack, Belknap Counties

Table with 5 columns: Name, HO, JE, XX, BS

Sullivan County

Table with 5 columns: Name, HO, JE, XX, BS

Table with 5 columns: Name, HO, JE, XX, BS

VERMONT

Addison County

Table with 5 columns: Name, HO, JE, XX, BS

Table with 5 columns: Name, HO, JE, XX, BS

Table with 5 columns: Name, HO, JE, XX, BS

Caledonia County

Table with 5 columns: Name, HO, JE, XX, BS

Table with 5 columns: Name, HO, JE, XX, BS

Chittenden County

Table with 5 columns: Name, HO, JE, XX, BS

Essex County

Table with 5 columns: Name, HO, JE, XX, BS

Franklin County

Table with 5 columns: Name, HO, JE, XX, BS

Table with 5 columns: Name, HO, JE, XX, BS

Grand Isle County

Table with 5 columns: Name, HO, JE, XX, BS

Lamoille County

Table with 5 columns: Name, HO, JE, XX, BS

Orange County

Table with 5 columns: Name, HO, JE, XX, BS

Table with 5 columns: Name, HO, JE, XX, BS

Orleans County

Table with 5 columns: Name, HO, JE, XX, BS

Table with 5 columns: Name, HO, JE, XX, BS

Rutland County

Table with 5 columns: Name, HO, JE, XX, BS

Washington County

Table with 5 columns: Name, HO, JE, XX, BS

Windham County

Table with 5 columns: Name, HO, JE, XX, BS

Table with 5 columns: Name, HO, JE, XX, BS

Windsor County

Table with 5 columns: Name, HO, JE, XX, BS

Lancaster DHIA Milk Lab - Microbiology / Culture Lab - Forage Lab

King's AgriSeeds Inc. FEEDING YOUR FARM'S FUTURE.

Planning on replacing an existing roof or constructing a new building? THINK LIFETIME THINK METAL

How to get more out of your herd. Cornell QMPS has proven you can get more from your herd - more staph aureus and more beef.

Offering a Full Line of Ag Seed. LEABROOK AG "Helping You Cover Ground"





# Researchers find no 'holes' in dairy/beef cross-breeds

UNIVERSITY PARK, Pa. — Facing economic challenges, dairy farmers are increasingly crossbreeding some of their Holstein cows with beef breed bulls to add value to surplus calves born in their herds.

In an analysis of almost 40,000 cows, a team of Penn State researchers found that carrying and birthing the larger crossbred beef calves generally does not negatively affect dairy cow health.

The research, published in the Journal of Dairy Science, included records from 39,249 Holstein cows in 10 dairy herds in the Northeast and Midwest that had calves with known Holstein or beef breed sires from 2010 to 2023.

According to the researchers, calves sired by beef bulls were as likely to survive birth as those sired by Holstein bulls, with the exception of calves sired by crossbred beef bulls. The risk of a cow experiencing dystocia, or a difficult birth, did not differ by the sire breed of her calf. Likewise, clinical health events experienced after calving and early lactation cessation did not differ between cows that had Holstein or beef-sired calves.

Cows carrying beef-sired calves had increased gestational length compared to those carrying Holstein-sired calves. While calves sired by Angus bulls were only carried for one day longer than Holstein-sired calves, those sired by Limousin

and Wagyu bulls extended a cow's gestation by five and eight days, respectively.

"Understanding the impact of different beef sire breeds on gestation length allows dairy farmers to plan for the longer pregnancies and adjust their operations accordingly," said the study's lead author Bailey Basiel, who graduated in May with a doctoral degree in animal science.

Significantly, cows that carried beef-sired calves did not differ in milk, milk fat or milk protein yield when compared with those that carried Holstein-sired calves, noted team leader Tara Felix, associate professor in the Department of Animal Science in the College of Agricultural Sciences and beef specialist in Penn State Extension.

"Our results suggest that current beef-dairy sire selection parameters in the United States are not negatively affecting the dairy cow," she said.

The study did not uncover any negative effects of Holstein dairy cows carrying and giving birth to beef crossbred calves, according to Basiel. That was likely because Holstein dairy cattle have large frames and are physically able to accommodate the beef crosses, she suggested.

"We didn't see any ill effects, at least in these herds that are using Holstein cows, and I think that's pretty reflective of

the U.S. dairy population — we milk mostly Holsteins in this country," she said. "But the second most popular breed is Jersey. And when you compare a Jersey and a Holstein, physiologically, Jerseys are a lot smaller. Follow up research will determine whether Jerseys can safely produce beef crossbreeds without suffering health and milk-yield problems."

One important caveat to the study, Basiel pointed out, is that the Holsteins were all "multiparous cows," meaning they had already given birth at least once.

"It was not the first time they'd had a calf, and statistically, traumatic experiences during birthing are a lot more likely to happen the first time a cow is giving birth, because she's smaller and she's never done it before," Basiel said. "So, at least in these older cows — cows that have at least had one lactation before — we saw no differences in calving ease or stillbirth."

Adrian Barragan, associate research professor in animal science and extension veterinarian, and Chad Dechow, associate professor of dairy cattle genetics, contributed to this research.

A predoctoral fellowship award from the U.S. Department of Agriculture's National Institute of Food and Agriculture supported this work.

## North American Intercollegiate Dairy Challenge® elects new leadership

MADISON, Wis. — North American Intercollegiate Dairy Challenge® (NAIDC) recently elected new leadership, including two new board members and the 2024 – 2025 Executive Committee. As described in the NAIDC mission statement, the Board focus is to "develop tomorrow's dairy leaders and enhance the progress of the dairy industry, by providing education, communication and networking among students, producers, and agribusiness and university personnel."

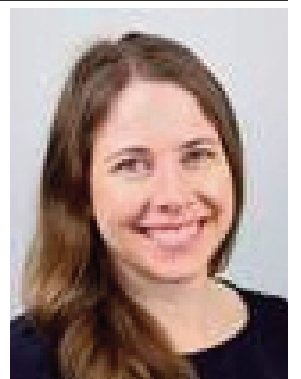
Newly elected to the 15-person volunteer NAIDC Board of Directors include:

- **Heather Weeks**, Farm Credit East, Bedford, N.H. She also has experience in agriculture development, serving as a Peace

Corps volunteer in Ecuador and continues to volunteer with the USAID Farmer-to-Farmer program teaching financial literacy worldwide. Before joining Farm Credit, Heather worked for Penn State Extension teaching farm business management. She holds an M.S. degree from Virginia Tech in ag economics and a B.S. degree in dairy science. As an undergraduate, she participated in the Southern Regional Dairy Challenge program twice. In her professional capacity, she has worked in the resource room with Penn State Extension, served as an advisor in the Dairy Challenge Academy program, and judged both regionally in the Northeast and at the national contest.



Heather Weeks



Jenn Lane

- **Jenn Lane**, Cargill Animal Nutrition, Hanford, Calif. works specifically in their Food Safety, Quality, and Regulatory division. By performing internal audits, she is part of the team that ensures feed safety for animals and ultimately human consumption. She has been involved with the Western Regional Dairy Challenge since the beginning of that contest, serving as a member of the Planning Committee. She also has assisted the Cal Poly Dairy Challenge teams with practice herds, participating in Dairy Challenge events since the first contest.

The NAIDC Executive Committee for 2024-25 includes:

- Chair: Alex White, Virginia Tech, Blacksburg, Va.
- Vice Chair: Jeffrey Elliot, Balchem, Amarillo, Texas.
- Associate Vice Chair: Ted Halbach, University of Wisconsin-Madison, Madison.
- Finance Chair: Megan Mouw, Elanco Animal Health, Fresno, Calif.
- Programs & Engagement Chair: Gail Carpenter, Iowa State University, Ames, Iowa.
- Program Chair: Trevor DeVries, University of Guelph, Guelph, Ontario, Canada.

## Directory of Building Contractors

for new and renovated dairy facilities and other farm buildings



**RYAN SERVICES, INC.**  
Building Relationships  
**Joseph M. Ryan**  
3179 Quaker Valley Road  
New Paris, PA 15554  
info@ryanservicesinc.com  
Cell: 814.285.6129 Office/Fax: 814.839.4826



**DAIRY HOUSING CONSTRUCTION & REMODELING**

Free Stall Barns • Tie Stall Barns  
Heifer Barns • Calf Barns • Robotics  
Special Needs • Manure Handling

*Quality & Value in Construction*

(800) 845-3374 **FARMER BOY** FarmerBoyAg.com  
✓ Parts You Need. ✓ Brands You Know. ✓ Prices You Can Afford.

Specializing in construction & renovation of agricultural buildings

Dairy Facilities • Pole Barns • Free Stall Barns  
Concrete Work • Reroofing • Horse Barns

**WHITE HORSE CONSTRUCTION**  
1-888-385-2360 • 1-610-593-5559

**E&F Ag Systems**  
Ag Construction & Equipment

New freestall & heifer barns.  
Freestall barn renovations.  
We specialize in all types of dairy curtains.

2812 Old Phila. Pk. (717) 768-0304  
Bird in Hand, PA 17505




**King**  
Premier Dairy Facilities  
**Dean Hoover**

King Construction Co., LLC Office: (717) 354-4740  
525 Hollander Rd. Cell: (717) 304-4993  
New Holland, PA 17557 dhoover619@comcast.net

**Building Contractors:**  
Our directory of building contractors runs the 2nd and 4th weeks of each month. Call our advertising department to find out how to be included.  
**717-656-8050**




**Poly View Agricultural Feed Bins**



**Advantages of Poly Bins**

1. Never rusts
2. Poly View - Always able to see your feed level
3. Minimal or no condensation on the inside wall, totally opposite of metal bins
4. Lasts for many years
5. No salt or mineral problems
6. 10 year warranty
7. All Frames are Hot-Dipped Galvanized



**Ulti-Mat All Rubber Cow Mattress Installation**  
Continuous Cow-Comfort – THE ONLY All Rubber Mattress that recovers to original shape after cow movement.

**Superior Continuous Roll Rubber Flooring Available!**  
Up to 14.5' wide & 150' long.  
All NEW Virgin Rubber

**Zartman Farms Cow Comfort Systems, Inc.**  
820 Hilltop Rd., Ephrata, PA 17522 • 717-733-1050  
Northeast U.S. Distributor of Poly Dome Equipment • Wholesale & Retail  
zartmanfarms@dejazzd.com • www.zartmanfarms.com

## Financial

from page 7

edge spans a wide spectrum of legal issues, with a focus on business succession planning, real estate, and asset preservation within the agricultural law framework.

- **Mike Hosterman** has been with Horizon Farm Credit and its predecessor organization for 33 years. He works with farm operations to conduct all types of strategic planning. He has worked with various ag operations and businesses in six states and has primarily worked with dairy clients to benchmark their operations and make profitable business decisions. Mike has served on the Horizon Farm Credit Dairy Team as one of the founding members, and as a contributor to their dairy outlook.

- **Alan Waybright** is owner of Mount Rock Dairy in Cumberland County, Pa. He has been in dairy farming for the past 40 years, spending the first 35 years working in his family's multi-family partnership (MasonDixon Farms) near Gettysburg before becoming a sole owner of Mount Rock Dairy in 2019. The farm is currently undergoing an expansion from 650 cows to 1000 cows.

- **Ben Peckman** and his wife operate Slate Ridge Dairy in Franklin County, Pa. They milk approximately 150 cows and raise all of their replacement heifers. They have diversified the dairy operation through cash crops, raising and finishing their bull calves, grazing a group of native beef steers on some of their cover crops, and selling grain to local farms and feed mills. Ben utilizes several innovative planting and cropping strategies on his operation, including highly diverse cover crop mixes, a green planting approach, a seed-buying group with neighboring farms, and more.

- **Matt Brake** of Oakleigh Farm in Franklin County, Pa. manages the farm in partnership with his father Glenn and other family members. Together, they milk 120 cows and farm 400 acres. They also raise their own heifers and calves, and their herd of Holsteins is 100 percent registered. A devastating barn fire in 2019 forced the family to decide whether they were going to rebuild or leave the dairy industry altogether. Matt's family ultimately decided to invest in innovative technology, including a robotic feeding system, robotic milkers, automated curtains and fans and robotic manure collectors.

For more information about the program and/or to register for the event, call LeeAnn McLaughlin at 717-346-0849 or visit [www.centerfordairyexcellence.org/financial-conference](http://www.centerfordairyexcellence.org/financial-conference)

## Phil Hasheider wrote book on balanced matings

SAUK CITY Wis. — A popular book about the age-old question of how to breed a good herd of cows is once again available in print. *Corrections Lines* details herd stories shaped by balanced matings with 800 photographs to illustrate the history of the 27 featured Holstein herd breeding programs.

Stories are told, in the breeder's own words, by those involved in creating such breed influencing sires as Walkway Chief Mark, Carlin-M Ivanhoe Bell, Mowry Ivanhoe Prince, Heatherstone Lucky Typeblazer, Burket Falls ABC, Man-O-War BF Crescent Combine and others.

Individual copies can be ordered from the author for \$45 each, plus \$10 priority mail from Philip Hasheider at P.O. Box 155, Prairie du Sac, WI 53578.



## Safety video series offered

HARRISBURG, Pa. — The Center for Dairy Excellence and the Professional Dairy Managers of Pennsylvania (PDMP) has a farm safety video series available to help dairy producers share simple safety reminders with farm employees. The "Seconds for Your Safety" videos, designed to be approximately 60 seconds in length, are available in both English and Spanish and can be watched and shared easily on a computer or cell phone. They will cover topics such as safety around animals, fall prevention measures, tractor and truck rollovers,

youth on the farm, and more.

The video in the series is available and shares quick tips and precautions dairy producers can take around horizontal silos, especially during harvest. To view the English and Spanish versions of the video, visit [www.centerfordairyexcellence.org/farm-safety](http://www.centerfordairyexcellence.org/farm-safety).

If you know a dairy producer without Internet access who might benefit from watching the videos or sharing them with farm employees, email Emily Barge at [ebarge@centerfordairyexcellence.org](mailto:ebarge@centerfordairyexcellence.org) or call 717-346-0849 to request access.



## GOLD SPIKE®

*Gold Spike is an oral, non-drug option, helping those who want to reduce the use of antibiotics.*

- No Meat or Milk Withholding
- Immune Support
- Reduced Inflammation

*New Research shows better intestinal wall by decreased cell permeability, strengthened cell junction integrity, and regulated expression of both pro-inflammatory and anti-inflammatory cytokines leaving no residues in meat or milk.*



920-682-0264  
[priorityiac.com](http://priorityiac.com)



©2024 Priority IAC, Inc. All rights reserved.

# State veterinarian urges bulk tank surveillance participation

By SHERRY BUNTING  
Special for Farmshine

HARRISBURG, Pa. — Dairy producers have a choice right now, and State Veterinarian Dr. Alex Hamberg urged them to choose the side of surveillance, so in the event that highly pathogenic avian influenza (HPAI H5N1) would come to Pennsylvania dairy herds, “we can detect it early and stamp it out with as few farms affected as possible ... to avoid a bigger problem.”

Part of the reason this has become so important in Pennsylvania, despite having no H5N1 detections, is because of the close proximity of dairy and poultry operations here. The bovine variant of H5N1 (known as B3-13 in its genetic sequence) is spilling back into poultry operations from affected dairies in affected states.

“We want to make sure our dairy partners are cognizant of what our poultry industry has experienced, so we want to be proactive in preventing that,” added Dr. Erin Luley, assistant state vet. “We also want to be proactive as a partner in One Health. There are potential concerns with this virus, so it is better to stay out in front of it, ensuring the dairy herd in Pennsylvania remains free of it, and if we do get it, to be able to stop it before it can spread more widely — putting dairy, poultry and people at risk.”

During the Aug. 7 Center for Dairy Excellence monthly industry call on HPAI in dairy, Hamberg contrasted the tale of three states.

“Colorado (with 64 cases to-date) is getting hit really hard with it right now. It didn’t get picked up early on, which gave it an opportunity to spread far and wide,” said Hamberg. “It’s having quite an impact on their dairy herds in Colorado, and it has also spilled over into some poultry facilities out there as well.”

He contrasted this with Ohio and North Carolina. Each of those two states had just one case on a single farm back in April.

“Both were able to detect it at the one-farm stage and were able to take measures to contain it and stamp it out at the one-farm stage. It did not spill over to poultry or other dairy facilities, and those states have returned back to normal status,” Hamberg explained.

He said this contrast is “the biggest argument for why we need good surveillance.” To inquire about enrolling in volun-

tary bulk tank surveillance, contact the State Vet’s office at RA-Ag\_StateVet@pa.gov

According to Dr. Ernest Hovingh, director of the PADLS lab system in Pennsylvania, producers reluctant about participating say they are concerned about false positives. However, he says the PCR testing is “extremely robust and trustworthy. This test we are using is the same one we used to look for influenza in poultry samples. It has been around a long time. It’s highly accurate.”

**Positives get retested by USDA and PDA for extra assurance.**

The Penn State University dairy signed up for the bulk tank testing right away, despite having no clinical signs and having imported no new cattle.

It is a three-week enrollment. After a producer contacts the State Vet’s office to participate, they will receive an enrollment form and welcome package with sampling supplies, cold packs, mailers, labels and instructions. In the first two weeks, bulk tank samples are collected and mailed in. In the third week, milk samples from cows in the farm’s sick pen are collected and sent in.

“At this point, you are fully enrolled, and after that, it is one bulk tank sample per week ongoing,” said Hamberg. Valid samples can be collected by veterinarians and section six PMO testers. Vets can also train staff at the farm and sign off to allow them to take the samples under veterinarian authority.

“If there is another hurdle preventing participation, we’ll try to help you out or address it. I want to hear from farmers and processors on how to get more participation and surveillance,” said Hamberg.

A fair number of tests continue to come into the PADLS for movement of cattle. Hovingh said they officially guarantee a 3-day turnaround, so if farms call ahead to let them know when they need it, they can work in a tighter window.

He reminded dairy producers to ship the samples on ice and be sure the lactating cow samples are milk samples, not nasal swabs.

In hard-hit Colorado, bulk tank monitoring is now required.

From March 24 through August 20, 2024, a total of 192 confirmed case outbreaks in 13 states have been recorded by USDA Animal and Plant Health Inspection Service (APHIS). Those states were Colorado (64), Idaho (31), Michigan (27),

Texas (24), Iowa (13), Minnesota (9), New Mexico (8), South Dakota (7), Kansas (4), Oklahoma (2), Wyoming (1), Ohio (1), and North Carolina (1).

Within the past 30 days, there have been just 24 detections in just 5 states, including Colorado (18), Texas (2), South Dakota (2), Michigan (1) and Idaho (1).

On August 13, FDA released the results of the second retail sampling survey that tested dairy products for H5N1. Again, no viable virus was detected in the samples collected from retail locations and analyzed between June 18 - July 31. FDA says these results strengthen previous assessments that commercial pasteurization inactivates the H5N1 virus. While there was no viable virus detected, the PCR did identify the viral RNA in several retail samples of dairy products in Idaho, but the follow up tests to determine viability were negative, demonstrating the safety of the U.S. dairy supply.

To determine the current nationwide prevalence of H5N1 in the bulk raw milk supply at dairy processing facilities, the executive board of the National Conference of Interstate Milk Shipments (NCIMS), in cooperation with the Food and Drug Administration (FDA) and USDA, developed a milk silo-sampling study. It was announced August 5, and letters went out to the leaders of state agriculture and health departments about working together to gain insight into the virus through coordinated data collection over a six-week period.

This is a voluntary partnership for states to collect a sample of bulk raw cow’s milk stored at each dairy processing facility prior to pasteurization. The samples are collected during routine regulatory sampling activities at Grade A and non-Grade A facilities and shipped to a third-party central location for double blinding the study, so that a general region is all that is known about the samples, and the state and plant where a positive might be found, would not be known.

In other testing, USDA has screened 152 wild deer samples collected since December 2023 for HPAI, with no detections so far. These samples were from states with positive detections in dairy herds, indicating deer are not a natural reservoir.

“If we do not have a natural reservoir for this virus, we have a shot at stamping it out through really good surveillance, to contain it and get rid of it before it spills into wildlife and becomes a more permanent resident of our landscape,” said Hamberg.

Dr. Miriam Wamsley a respiratory virus epidemiologist with Pennsylvania Department of Health urged producers to order personal protective equipment (PPE) from the state stockpile to have on hand.

“We would like to see people who are in contact with dairy cows use some PPE and increase the level of use if we have a positive,” she said. In addition to masks, face shields, goggles and gloves, dairy producers can order coveralls and gowns — all at no cost.

Kellie Hough with the USDA emergency response system stressed the importance of making sure dairies have a federal premise ID and emailing the Pennsylvania Department of Agriculture with the information so they can get it preloaded in the state’s EMRS system. This is the system that is used to issue movement permits in the event of a designated control or quarantine area.

Dr. Mike Kornreich, a USDA APHIS veterinarian, reminded dairy producers of support available to non-affected dairies in non-affected states. USDA will pay up to \$1500 per premise to assist with building the operation’s biosecurity plan; up to \$100 to purchase inline milk samplers; up to \$2000 per premise to reimburse veterinary and other costs associated with collecting samples for H5N1 testing. USDA also pays the cost to ship samples up to \$50 per shipment, for up to two shipments per month per premise.

Pennsylvania covers all costs for the voluntary bulk tank surveillance sampling for producers and processors.

Biosecurity workshops were highlighted, and dairy producers were urged to “Think bio securely, act bio securely, and get their biosecurity plan on paper.”

**Keystone Concrete Products, Inc.**  
477 E. Farmersville Rd.  
New Holland, Pa. 17557



(717) 355-2361 - corporate office  
(717) 355-9548 - fax  
keystoneconcreteproducts.com

NEED THAT BUNKER? CALL ASAP TO RESERVE YOUR WALLS!!!




Secure Cover Dealer

**Agricultural Pre-cast Products Available:**



Financing Available

## NELSON & SONS

### CONCRETE GROOVING

FULL SURFACE & WIDE GROOVING

Serving PA, NY & Surrounding States

**PA: 610-589-1030**  
**NY: 607-351-9690**



*Save Cows, Save Your Profit Margins*

[www.NelsonandSonsConcreteGrooving.com](http://www.NelsonandSonsConcreteGrooving.com)

## Cross-species vet underscores poultry industry's concern about bird flu in dairy cows

By SHERRY BUNTING  
Special for Farmshine

HARRISBURG, Pa. — “The virus doesn’t care; it will spread while everyone debates policy.” That was the observation of Dr. Kay Russo, an RSM consulting veterinarian who started her career in dairy practice before transitioning to the industry and getting involved in conducting poultry research. Much of her current work deals with managing diseases across different animal populations.

This includes the new ‘x’ factor for poultry producers now that the highly pathogenic avian influenza (HPAI) has mutated in cattle with that bovine variant now spilling back into the poultry population.

“We have had it circulate to poultry through migratory waterfowl in the past, and now we have a new host, so the pressure is mounting in the proximity of these operations,” said Russo in an Eggheads podcast recently. “We have to remember that even though this is low-path in cattle, it is high-path in poultry.”

Russo noted that since H5N1 has spilled back into layers, from dairy, close to 20 million layers have been depopulated in the last four to five months. In addition, hundreds of thousands of turkeys in that time period.

“We have new pressure from a new host (dairy cows), and this will continue until we better understand how it is moving and getting into these (poultry) operations that are tra-

ditionally biosecure,” she explained.

As previously reported, the virus appears to be moving through fomite transmission. Birds are very sensitive, so a dime-size feces containing H5N1 has the capacity to wipe out a million susceptible birds. With that level of sensitivity among poultry, it can be difficult to keep it out despite strict biosecurity.

“My major concern here is of the influenza becoming airborne through dust and ventilation. It is hard to prove that mechanism, but if we consider the areas where viral load is coming off dairies, and then see that we had even the shower-in (poultry) facilities recently hit... how is it getting into these barns ultimately, that’s the million-dollar question,” said Russo.

Researchers know it is the bovine variant in recent poultry depopulations because it has its own ‘fingerprint.’ The Bovine variant, B3-13, has its own genetic sequence, and it’s been identified in recent poultry outbreaks.

On the cattle side, said Russo, who was involved in the early diagnostic work, “this is unlike anything we’ve ever seen,” marked by abrupt reduction in feed intake, reduced rumen motility, reduced milk production, and abnormal milk, along with non-descript respiratory and gastrointestinal.

She reported that in the Fort Collins, Colorado area, the hot-spot for dairy detections at 64 herds cumulatively, and 18 within the past 30 days – far outnumbering other states -

- 90% of the dairies were affected in that part of the state, and two bird companies had outbreaks and depopulation. How is it passing from milk cows to layer hens?

Russo says that’s the most immediate threat – to understand how it moves from milk operations to poultry operations and think about how to reduce viral load. Many dairies tend to replace one-third of the herd every year. She explains that this continually puts a naïve source into the mix, leading to the potential for spread and then the threat to nearby poultry. She believes vaccines will be needed to reduce viral load and reduce the pressure.

She also provided a window into the severity of H5N1 on affected dairy farms, referencing one 4000-cow herd that lost 40 pounds on its herd average in one month’s time, amounting to a \$200,000 milk loss per week during the acute phase. She also reports that early research on test subjects intentionally given the virus for the purpose of study shows the potential impact on udder tissue that could dampen future lactations.

“We need a comprehensive strategy that cuts through jurisdictional lines,” Russo affirms, noting that the dairy and poultry sectors and the dairy and poultry operations within a state or community, need to communicate with each other, that vaccination may be needed in the future, and that certainly more biosecurity and more routine testing will help reduce the pressure and the threat.

### Tree and shrub sale orders are due Aug. 28

UNIVERSITY PARK, Pa. — Penn State Extension’s Master Watershed Steward program will hold its fifth annual native tree and shrub sale this fall in 27 locations across the state.

As a fundraiser for the program, the sale offers 18 varieties of native trees and shrubs. Organizers will accept orders through Aug. 28, with curbside pickup available in September or October. Pickup dates and times vary by location.

Master Watershed Stewards plant trees to intercept and infiltrate stormwater, stabilize soils, and filter pollutants. Whether residents seek trees for privacy, foliage, shade, attracting pollinators, or creating a beautiful landscape, organizers note that the program offers a variety of trees and shrubs to meet a wide range of needs.

Trees and shrubs will be available in 1-gallon containers for \$20, 2-gallon containers for \$30, or 3-gallon containers for \$40.

Master Watershed Stewards guarantee a healthy specimen at pickup. Due to variations in planting, site conditions, and care, no guarantee or refunds are possible after tree pickup.

Orders can be placed online or by phone for a one-day curbside pickup in the fall. All items must be preordered. Plants will not be available for purchase at pickup sites. Funds from the sale will support the Master Watershed Steward activities in that region.

More information is available on the Penn State Extension website at <https://extension.psu.edu/mws-tree-sale>.

## Pa. soybean growers invited to enter contest

Convenient online signup; deadline to submit entry form is September 1

HARRISBURG, Pa. — Although harvest is still weeks away, the deadline for entering the Pennsylvania Soybean Yield Contest is nearing. Convenient online signup is available with a deadline of September 1. The deadline for submitting the grower’s actual harvest yield report is November 15th.

The Pennsylvania Soybean Yield Contest is designed to focus farmer attention on agronomic and management skills that will increase soybean yields and profitability. The contest is sponsored by the Pennsylvania Soybean Board in association with Penn State University Extension.

Contest rules encourage producers from throughout the state to enter. The contest recognizes not only the state-wide grand champion, but also the top growers in each of five regions of Pennsylvania. Production practices used by partici-

pants will be publicized when the regional winners are announced. Growers who enter the contest may choose to have their results publicized anonymously.

The top producer in each region will win a trip to the Commodity Classic, the annual joint convention of the American Soybean Association, National Corn Growers Association, National Association of Wheat Growers, and the National Grain Sorghum Producers, to be held in 2025 in Denver, Colorado.

The contest was launched by the Pennsylvania Soybean Promotion Board in 1992. Register online at [pasoybean.org](http://pasoybean.org) or contact the Pennsylvania Soybean Board at 717-651-5922. Additional information on the contest is available on the Pennsylvania Soybean Board website: [pasoybean.org](http://pasoybean.org)



Power Systems Electric Inc.

Emergency Generator Systems & Service  
885 South Railroad Street, Myerstown, Pa 17067

Sales, Service, & Rentals  
Providing service for most brands



Maintenance Programs

New & Used  
Gen Sets,  
Transfer Switches,  
PTO Gens.

24 HR  
EMERGENCY  
SERVICE



info@psegenerators.com  
www.psegenerators.com

For all your generator needs call  
(717)933-5617

# SALES. SERVICE. INSTALL.

WE DO IT ALL.



## YOUR TRUSTED SOURCE FOR

- BouMatic parts, chemicals and service
- Mattresses, stalls, curtains and cow comfort products
- Animal health supplies

SERVING MARYLAND, PENNSYLVANIA, NEW JERSEY, DELAWARE AND NEW YORK

Innovative  
Dairy  
Solutions

“Doing what’s right for the customer”

GALAXY

BouMatic

CALL NOW TO FIND OUT MORE!

1-800-801-2082

INNOVATIVEDAIRYSOLUTIONS.COM



**Dairy products rally higher on CME  
Cheese tops 2022 highs**

The CME spot market for dairy rallied higher through the week on all products across the board.

Trade was particularly brisk for butter. After last week's 3-day volume of 28 loads on a 2-cent gain, Thursday's session moved a record 51 loads at prices higher-yet. For the first three days this week, 32 loads of butter traded, and the spot price was pegged Wed., Aug. 21 at \$3.16/lb, up 4 cents from the prior Wednesday.

Grade A nonfat dry milk made a 4-cents-per-pound week-over-week gain as 13 loads changed hands Monday through Wednesday, with the spot price pegged at \$1.2850/lb.

On the Class III side, the cheese market was quiet in terms of volume, but loud in terms of rallying price levels. Week, with daily prices gaining ground well over the \$2.00/lb mark in an early-week rally before stabilizing at those higher levels at midweek.

On Wed., Aug. 21, 40-lb block Cheddar was pegged at \$2.0950/lb -- up 7 cents from the prior Wednesday, with 3 loads trading the first three days this week. The 500-lb barrel cheese price, jumped to continue above the block Cheddar price,



pegged at \$2.2825/lb, up 12 cents from the prior Wednesday, with 2 loads changing hands. Blocks stand 14 cents higher than two weeks ago and barrels up 24 cents in the same period, producing a 19-cents-per-pound barrel over block spread

The NDPSR for week ending Aug. 17 saw the barrel (\$2.007/lb) over block (\$1.9650/lb) advantage slip to 4 cents.

Dry whey gained back nearly a penny this week as 3 loads traded Monday through Wednesday with the spot price pegged at \$0.5675/lb on Aug. 21. The USDA weekly National Dairy Product Sales Report crawled 2 cents per pound higher but didn't make it out of the 40's, reported at \$0.4925/lb for the week ending Aug. 17, still fully 7 cents below the market-clearing spot markets of the past nine weeks.

**2024 milk futures jump big  
while 2025 stays flat to slightly higher**

Class III and IV milk futures made significant gains this week for 2024 contracts, rallying as much as \$1.00 higher. Moderate gains were charted for the first two to three months

of 2025, and the rest of the board simply held steady to as much as a dime higher under the weight of what will be a 75-cents to \$1.00 drop in those prices come early 2025, if the USDA's proposed new make allowances are part of the final decision ratified by dairy producers when they vote on whether to keep the Federal Milk Marketing Orders with USDA's proposed changes, or reject the changes in an Order by Order vote -- which would mean terminating any Order that fails to get a two-thirds favorable vote.

On Wed., Aug. 21, Class III milk futures for the next 12 months (Aug24-Jul25) averaged \$19.89, up 32 cents from the 12-month average on the previous Wednesday. The 12-month Class IV average at \$21.21, up 27 cents.

**Global Dairy Trade index up 5.5%**

In the face of reports of New Zealand's slowing export sales to China potentially putting some extra milk powder into other global supply channels, the GDT biweekly internet auction saw the all-products index rally by 5.5% on Tues., Aug. 20 compared with two weeks prior. Every product was a winner, a reflection of demand, globally, outstripping supply particularly in the near-term, but also strong gains on contracts out through January 2025.

The cheese index was virtually unchanged for Cheddar (down 0.2%) at \$1.94/lb, but Mozzarella (up 5.0%) made another round of significant gains, averaging \$2.18/lb.

GDT index gains were also achieved Aug. 20 on these products as follows: Whole milk powder up 7.2%, averaging \$1.58/lb; Skim milk powder (up 4.0%) averaging \$1.20/lb; Butter (up 3.7%), averaging \$3.04/lb; Anhydrous milkfat powder (AMF) up 4.8%, averaging \$3.29/lb; Lactose up 2.7%, at 43 cents/lb. Lower indexes were reported on Skim Milk Powder (SMP) down 2.7%, averaging \$1.15/lb; and Butter down 2.4%, averaging \$2.99/lb.

**U.S. July milk output down 0.4%**

U.S. milk production was down 0.4% year-over-year in July, according to the USDA monthly report released Aug. 21. Cow numbers are off 43,000 head from a year ago, while output per cow was reported at just a pound per cow per month greater than a year ago.

Milk production in Colorado, where bird flu has hit a majority of the dairies, was down 1.8% in July due to reduced output per cow and despite 1000 more cows numbered in the report. Idaho was in a similar boat with production down 1% from a year ago based on less output per cow and 1000 more cows.

Elsewhere in the West, California's production is down 4.8% from a year ago and New Mexico off 8.9%; however, Texas is up 6%, Kansas up 3%, South Dakota up 7.9%.

In the Northeast, Pennsylvania and New York are both off 0.2% on flattish output per cow and flattish cow numbers. Vermont's production trailed year ago by 3.7% in July.

In the Southeast, Georgia (down 0.6%) continues to ease back while Florida (up 1.8%) gains.

Lower July milk production was also charted in other Midwest and Mideast states versus year ago.

**Sept. Class I mover gains \$0.28 at \$21.60**

The September advance Class I base price mover was announced at \$21.60 for a gain of 28 cents per cwt. over the August mover, and up just about \$5.00 per cwt. year over year, according to USDA's August 21 advance price announcement.

**Canadian railway strike would severely  
disrupt U.S.-Canada Ag trade**

According to an Aug. 21st American Farm Bureau Market Intel report by Danny Munch using crucial USDA AMS data, "the recent decision by the Canadian Industrial Relations Board (CIRB) laid the track for a potential strike by nearly 10,000 rail workers at Canadian National Railway (CN) and Canadian Pacific Kansas City Railway (CPKC). The looming strike, approved by the CIRB to start on Aug. 22, would severely disrupt U.S.-Canada agricultural trade, leading to commodity and input delivery delays, shortages, commodity price volatility and other rippling impacts on the integrated North American agricultural supply chain."

Munch details the interconnectedness of North American agricultural trade by rail and concludes that, the agricultural economies of the U.S. and Canada "are deeply intertwined. A Canadian rail strike poses a significant threat to U.S. farmers, who are already expecting record crop yields and grappling with substantial stored supplies. With Canada serving as a major export market and a critical source of fertilizers, any disruption in rail transport could create a cascade of negative market impacts. The strike would not only hinder the movement of essential agricultural products but also exacerbate existing market pressures, particularly in the Midwest. As farmers contend with low commodity prices and limited storage capacity, the potential for delayed shipments and supply chain bottlenecks could severely undermine their profitability and restrict valuable access to foreign markets, placing additional pressure on an already vulnerable agricultural sector."

Looking ahead, Munch notes that a potential strike of 85,000 longshoremen across U.S. East and Gulf Coast ports starting Oct 1 would present similar challenges and cap vital exports terminals necessary for the U.S. agricultural economy to thrive. The full report is available at <https://www.fb.org/market-intel/canadian-strike-would-derail-key-ag-trade-transport>

*Morrissey Insurance*

**Congratulates Peter Eberly,  
Georgia Sellers, Memphis Sellers  
Best Bred and Owned Winners  
at 2024 Lebanon Fair!**

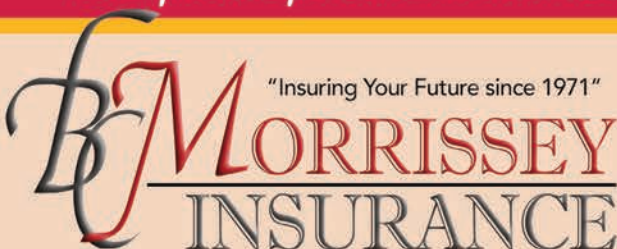


*Pictured: Brooke Beamesderfer, Lebanon Fair Queen, Ravyn Bashore, Lebanon County Dairy Princess, Memphis Sellers, Peter Eberly, Carissa Bomgardner, Emma Eberly, Lil' Dairy Miss, Georgia Sellers, Corianna Bomgardner, Lebanon Fair Princess, Madison Weaver representing Morrissey Insurance, Best Bred & Owned Sponsor.*

*Shout out to the following:*

- Chad & Sara Horst - Jr. Champion & Reserve Jr. Champion Red & White, Jr. Champion Holstein
- Aubrey Mase - Grand Champion Hampshire & Reserve Champion Hereford
- Evelyn Maulfair - Grand Champion Ayrshire & Reserve Champion Hampshire
- Rosalie Maulfair - Whole Hog Champion
- Gavin Molnar - Grand Champion Lamb
- Grant Molnar - Division IV Reserve Champion
- Caleb Nolt - Reserve Grand Champion Steer
- Ethan Risser - Champion AOB
- Jesslyn Risser - Whole Hog Reserve Champion
- Hudson Sellers - Reserve Champion Chester White
- Hayden Weaver - Grand Champion Red & White, Grand Champion Brown Swiss

*Special Shout out to all our customers & their children  
who participated and won at the 2024 Lebanon Fair!*



890 N. Reading Road  
Ephrata, PA 17522  
[www.insuringyourfuture.com](http://www.insuringyourfuture.com)  
**800-422-8335**

# Milking Shorthorn stands supreme at Morrison's Cove Dairy Show

Pictured with the supreme champion cows are, left to right: Norah Bechtel, Alternate Blair County Dairy Princess; Scott Fisher, Andrea Slusser, dairy ambassador; Judge Kelly Barbee, Molly Cessna on the halter of the reserve supreme champion; Keith, Mark and Donnette Fisher with their Milking Shorthorn that was named supreme champion; Renee Mellott holds the plaque which annually commemorates the show's winners.



First and second-place winners in the showmanship contest at the Morrison's Cove Dairy Show were, left to right: Addison Dodson, Channing Pheasant, Savannah Hershberger, Trent Frederick, Kat Longenecker, Anna Longenecker (overall champion), Blaire Gable, Anna High, Molly Cessna, Alexis Morningstar.



**Call Now or Order Online for**

# FREE SHIPPING

## OVER \$299

\*Get free shipping on all in stock, ground parcel orders within the contiguous United States. This promotion does not include LTL or Truckload shipped items. Other restrictions may apply.



800-845-3374  
FarmerBoyAg.com

**Offer Valid from**  
**8/26/24 to 8/31/24**

# A 2-year old Jersey stands as supreme champion at 4-H show

HONEY BROOK, Pa. -- The Chester County 4-H Dairy Show was held at the Romano 4-H Center of Chester County on Friday, August 9th. Fifty entries, divided by breeds, were exhibited by 34 4-H youth participants with Mark Welk placing the animals and providing 4-H members with constructive feedback.

Welk selected Jacob Pinciotti's senior 2-year-old, a Jersey named Hillacres Hondo Rosebud, as the supreme champion of the show. Other breed champions were:

**JERSEYS:** Heidi Bramm exhibited the junior champion, Pigeon Creek Casino Ivy, while Ellie Harrop was awarded the junior champion prize. Jacob Pinciotti exhibited the senior champion and grand champion, Hillacres Hondo Rosebud, who was eventually named supreme champion. Max Teran was awarded the reserve senior champion prize for his senior 3-year-old, PMF Matt Poinsettia.

**HOLSTEINS:** Cody Nolan was awarded the senior and grand champion prizes for his 5-year-old, Kodiak-Creek Bixby Piji, who was also named best bred and owned in the breed. Melissa Griswold earned reserve hon-



Judge Mark Welk is pictured with Jacob Pinciotti and his senior 2-year-old Jersey that he chose to be the show's supreme champion. Photo submitted

ors with her dry cow, Preble-Lane Cheers Rey. Josie Hostetter exhibited the junior champion, a winter calf named MS Hollow-Ridge Ashlyn ET. Reid Umble won the reserve junior champion prize with his spring calf, Glen Valley Lambda Cadillac. Sophie Griswold's junior yearling, Preble Lane Kingboy Astro, was the best bred and owned among the calf and heifer classes in the breed.

**RED & WHITES:** Top honors went to Sophie Griswold with her junior 3-year-old, Preble-Lane Ammo Lilli-Red, who was named senior and grand champion. Emma Dechert

received the reserve senior and reserve grand champion prizes. Kerri Davis exhibited the junior champion, a winter calf, Towns Edge Rebel, while Baylee Stoltzfus earned the reserve junior champion prize with her winter calf, Colt-Steph Rebel-Red Doughnut.

**AYRSHIRES:** Makayla Smith's entry, a senior 2-year-old named Dreamnol Reagan Galena, was named senior and grand champion. Bella Smith received the reserve prizes with her 4-year-old, Dreamnol Reagan Gabrielle. Makayla Smith's summer yearling, Dreamnol Reynolds Baily, was named junior champion and best bred and owned while Wyatt Nolan's winter calf, Dreamnol Reagan Gretchen, was named reserve junior champion.

**BROWN SWISS:** Top honors went to Harleigh Ellingsworth with her summer yearling, Lavandula Jukebox Nicoli NP, who was named junior and grand champion. Jes-

sica Fatula was awarded the reserve grand champion and reserve junior champion prizes for her spring calf, Quiet Valley Tanner Sherbert. Ava Kaskela took home the prize for senior champion for her senior 2-year-old, Udderconfusion SPD Olga NP.

**LINEBACKS:** At the halter of his fall calf, Pocopson-Meadow Ice Reese, Chris Schweitzer was awarded prizes for junior and grand champion. Annsley Frazier was runner-up with a calf named Clover, while Hannah Barbosa's junior 2-year-old, PM Nerve Penelope, was named senior champion.

**GUERNSEYS:** Scott Sollenberger won all the prizes with his fall yearling, French Creek Ernie Helen.

**MILKING SHORTHORNS:** Camerone Wallace, showing a spring calf named Daring, was awarded junior and grand champion prizes.

## 'The Dairy Show' runs 24/7/365

MADISON, Wis. — *The Dairy Show*, World Dairy Expo's podcast, is available on Amazon Music, Apple Podcasts, Google Podcasts, iHeart Radio, Spotify and online at world-dairyexpo.com

New episodes of *The Dairy Show* are released on the second and fourth Tuesday of each month. Expo's podcast features a new guest on every episode discussing topics related to the global dairy industry.

"As the digital meeting place of the global dairy industry, Expo's podcast gives listeners a taste of Expo year-round," shares Katie

Schmitt, host of *The Dairy Show*. "The Dairy Show focuses on a variety of topics ranging from cows to the colored shavings to cutting-edge technology while introducing different guests to provide unique perspectives."

Listeners span the globe, representing over 110 countries, all 50 U.S. states, and 12 Canadian provinces and territories. Some of *The Dairy Show's* most popular episodes include "Judging on the Colored Shavings", "Fitting and Grooming Dairy Cattle", "Just Talking Cows" and interviews with Expo Recognition Award winners.

**Patz**

**PATZ® MANURE OPTIONS**  
ALLEY SCRAPERS • GUTTER CLEANERS  
MANURE AUGERS • & MORE!

CONTACT DEALERS FOR SAVINGS DETAILS ON QUALIFYING PRODUCTS THROUGH AUGUST 31ST!

**PENNSYLVANIA**

Mercersburg	Cedar Crest Equipment LLC	717-660-0060
Myerstown	Cedar Crest Equipment LLC	717-866-1888
Quarryville	Cedar Crest Equipment LLC	717-529-2782
Troy	Fallbrook Fabrication	607-426-0592

**VIRGINIA**

Harrisonburg	C&C Farmers Supply Corp.	540-433-8532
--------------	--------------------------	--------------

**NEW YORK**

Collins	A.R. Timmel	716-532-2040
---------	-------------	--------------

**Territory Sales Manager**  
Paul Kratz • 920-897-9212  
paulkratz@patzcorp.com

## CERTIFIED ORGANIC CATTLE WANTED

### NICHOLAS MEAT LLC

Modern Meat Processor Paying a Premium For Your Certified Organic Cattle

Purchasing on Dressed Weight and Grade Basis

Nicholas Meat LLC is an approved Certified Organic Meat Processor. We are looking to purchase all your Certified Organic Cattle. Customers can deliver cattle to the plant Monday through Friday 7 A.M. to 1:30 P.M. Nicholas Meat LLC has also established several collection points.

**Cattle can be taken to:**

**Vintage Sales Stables, Inc.**

3451-3457 Lincoln Highway East, Paradise, PA 17562  
Every Thursday from 9 A.M. to 3 P.M.

**Weikert Buying Station**

721 Carrolls Tract Rd., Fairfield, PA 17320  
Mondays from 9 A.M. to 4 P.M.

**New N.W. Sales Company**

2006 Mercer-New Wilmington Rd., New Wilmington, PA 16141  
2nd and 4th Monday of each month.

**Belleville Livestock Market**

26 Sale Barn Lane, Belleville, PA 17004  
Every Wednesday.

**R&C Calf Farms, LLC**

13071 Emerson Rd., Applecreek, OH 44606  
Mon. -Thurs. 9 A.M. to 2 P.M. (Behind sale barn in Kidron)

**Please bring a copy of your Organic Certificate with each shipment!**

Please call the number below to inquire about these collection points or to schedule your sale of Certified Organic Cattle to Nicholas Meat, LLC.

### NICHOLAS MEAT LLC

508 East Valley Road, Loganton, PA 17747  
Please call Nicholas Meat LLC – 570-725-3511



# Clean Barns Mean Productive Cows!

Check out some of the manure handling solutions from the experts at **GEA**



**The Futuro pump**  
The Futuro pump enables liquid manure from a free stall barn to be transferred underground to long-term storage. It is a low energy pump with robust valves, efficient design and only requires minimal and easy maintenance.



**ProManure E2100 Series Cleaners**  
Adaptable to your needs with either cable, chain or rope options available. This unit features high corrosion resistance, multiple sled configurations and automated, worry-free operation for maximum efficiency.



**SW Series Cable Drive Unit**  
This unique design allows lateral movement of the drive as the cable is being wrapped around the rotating drum. This reduces excessive friction, which is usually the cause of premature wear of the equipment and cable.



## Comfy Cows Are Milkin' Cows! We Keep 'Em Comfy!



### Ventilation

- **Curtain Systems**
- **HVLS Large Ceiling Fans (Variable Speed and Automated Options From 8'-30')**
- **Recirculating Panel Fans**
- **Exhaust Fans**
- **Feed Bunk Sprinkler Systems**



### Barn Equipment

- **Cow Mattresses (Tie Stall, Free Stall, Waterbed, Rolled Rubber, and Top Cover Options)**
- **Tie Stall and Free Stall Equipment**
- **Gates and Chute Systems**
- **Feed Bunk Equipment**
- **Calf Housing**
- **Cow Brushes**



## Are Your Cows Comfy?



**CEDAR CREST**  
*Equipment* LLC

61 Elco Drive, Myerstown, PA 17067  
717.866.1888

1106 Ashville Rd, Quarryville, PA 17566  
717.529.2782

11120 Shimpstown Rd, Mercersburg, PA 17236  
717.660.0060

[www.cedarcrestequipment.com](http://www.cedarcrestequipment.com)





# Classifieds

"Say you saw it in FARM SHINE"

## 1 Services

**MOBILE SEED CLEANING.** Small grain only. Serving PA, MD, WV and VA. Golden Grain Seed Cleaning. 301-992-3526.

**FARM INSURANCE:** barns, equipment, hay and grain storage, Workers' Compensation, farm stands and stores, vehicles and farm homes. N.Y., Pa. and Va. Call Alec Pandaleon at 845-242-0113.

**REPAIRING TRACTORS** and farm machinery. Complete tractor overhauls and engine repair, dealer for quality aftermarket parts. Tiger and granite lights. Harsue Repair, New Holland, Pa. Call 717-355-0715.

**AG PHOTOGRAPHER** - senior, family, natural cattle portraits. Sales, herd dispersals and ag event photography coverage and albums. Based in Lancaster, Pa. A Farmgirl's Dream Photography. 717-824-1320.

**BALING SERVICES - CUSTOM** 3x3 and round baling, along with individual wrapping. Out of southern Lancaster, Pa. 717-826-3775.

**BOB & MILLIE'S DISCOUNT** signs. The cheapest guys in town. Free delivery on all sign orders. bobthesignman@yahoo.com. Real Estate-Construction-Banners-Yard Signs-Decals-Magnetic Signs-End of Lane Farm Signs. apple-treesigns.com. 410-708-1341.

**COMPOSTECH LLC. IS A** local Honey Brook business, making and selling organic compost at \$30 per cubic yard. Call Dave at 610-441-5154 to schedule a pick up. Also taking horse manure for free, must be dropped off.

**LOWER SCC & IMPROVE** conception. Highly effective, 35 years of time tested results and satisfied dairymen nationwide. No withholding ever feed additive, low cost. Call AG, Inc. today. 920-650-1631. alphageneticsinc.com.

**DAIRY PRODUCER** - would you like to lower SCC and mastitis rates, provide milking training, breach the language barrier and improve parlor performance? Call Adolph Dossman at 240-286-8996.

**INNOVATIVE DAIRY** Nutrition - specializing in forage planning to maximize production and optimize herd health through advanced nu-

trition. To improve your profits, contact Matt at 717-729-4530

**REDUCED PRODUCTION?** Heat stress? High SCC? Scours? Proven effective solutions to your herd's health needs, no withholding. Call the Dairyman's Helper. 800-829-7512.

**CUSTOM COLLECTING** - Call for prices. 301-491-3154. Triple-Hil Sires.

**RELIEF MILKING**-farm sitting. Tie stall or parlor. Feeding and young stock care. References available. Adrian Horning 717-466-9099. South-Central, Pa.

**KANN'S MILKING SERVICE** Franklin & Cumberland Co. 30 years experience, references available. Ryan L. Kann, 717-816-1920.

**BARN FULL? WITH 8+** years experience raising heifers, I am the solution to your problem. Space available now. Call today to discuss this opportunity. 717-860-8867.

**CUSTOM HEIFER RAISING.** Weaned calves to calving. 19 years experience. Modern housing, free stalls, AI breeding, TMR, monthly vet visits. Lebanon Co., Pa. Call 610-451-3006.

**GARDNER CUSTOM HEIFER** raising. 40 years experience. TMR in fenceline feeders with lockups, dairy veterinarian manages, adolescent to springers, competitive prices.

540-871-0246, dlggar@aol.com, gardnerheifers.com.

**CUSTOM HEIFER RAISING.** 300-400 head capacity. AI breeding, hauling available. We do not have state of the art facilities but are committed to an accelerated feeding program. Call for pricing. Reach us at 240-291-0286.

**HEIFER RAISING SERVICES** offering full health care program, excellent AI breeding program, activity monitor collars, balance ration, pasture for older heifers. Lancaster Co. 717-940-9435.

**CUSTOM HEIFER RAISING.** Good quality forages. Minerals and hay in TMR. Room for 150-200 head. Troy area. 570-220-4542.

**HEIFER BOARDING** - Sand bedded freestalls. Corn silage haylage and hay included. \$2/hd/day. 607-382-3633.

**HORSE BOARDING** available, Willow Street, Pa. area, Lanc. Co. 717-380-7612.

**ADAM'S HOOF TRIMMING.** 22 years of experience. 717-813-1358.

**MID-ATLANTIC HOOF** Trimming - providing farmers professional hoof care in Maryland, Virginia, Pennsylvania and surrounding states. Call Mikey Barton at 518-567-

8046 today for inquiries/scheduling.

**HASTINGS HOOF TRIMMING** is looking for clients in Pa., N.Y. and Ohio. Call or text 315-283-2717 for quote.

**CATTLE HOOF TRIMMING,** Western, Pa. Stand up chute, over 10 years in business. Looking for new clients. 814-279-7932, ask for Russell.

**TSHUDY'S HOOF TRIMMING.** Quarryville, Pa. Serving Southern Lancaster, Chester and York counties since 2003. \$11/cow, free wraps. Hydraulic tilt table. 717-917-8715.

**STAND UP HOOF TRIMMING.** Two man trimming crew, excellent cattle flow. Serving South Central Pa. and surrounding counties. Will travel for large numbers. Call Matt Weaver at 814-793-9966.

**HOOF TRIMMING** Service. 717-755-0770.

**PHILBRICK'S HOOF TRIMMING** serving western and central Pennsylvania, western New York and eastern Ohio. 814-720-0010.

**HOOF TRIMMING** - Garrett Co., Md. Tilt table. Willing to travel distances for large groups/herds. \$10/ cow. Trained at Dairyland Hoof Care, Wis. Call 301-616-2195.

**HOOF TRIMMING SERVICE** - providing quality service for large and small dairy and beef herds. \$10 per cow. Graduate of Hoof Care Institute. Stand up chute. 315-573-6742.

**MACIK HOOF TRIMMING** - Beef and dairy cattle. Hydraulic tilt table. Serving Western PA, Eastern OH, Northern WV. Phone 724-345-8501.

## SPECIAL HEIFER SALE

Friday, Sept. 6 starting at 6 p.m.

**Already consigned: 25 bred heifers from Shan-Rock Dairy, 20 open heifers from Lycoming County. Accepting all size dairy heifers. Accepting heifers on Friday, Sept. 6th UNTIL 4 p.m.**

Sale will be held at Jersey Shore Livestock Market, 1308 South Route 44 Highway, Jersey Shore, Pa. 17740. Trucking is available. To consign or for more info, contact Tyler: 570-898-0130.

**Auctioneer: Ed Pepper AU-005424**



**Precast Systems, LLC**  
Producing concrete since 1923

**FEED BUNKS  
BUNKER SILOS  
CATTLE GUARDS**

NCPA certified plant  
Installed on site  
717-369-3773

www.precastsystemsllc.com  
5877 Bullitt Rd. Greencastle, PA 17225

MILK MILK MILK MILK MILK

## Special Dairy Sale

Approx. 130 head sell

SALE HELD AT FISHER'S QUALITY DAIRY SALES  
3304 OLD PHILADELPHIA PIKE, RONKS, PA.

**THURSDAY, AUGUST 29 • 7 P.M.**

We will be selling many good, young, fresh cows and heifers from overstocked herds and heifer raisers, Reg. and grades, also springers.

### Sample of cows selling:

- Reg. 2 yr. Addison, fresh 8-2. Dam VG-86 Hipnotic made 24,770 4.4 BF. 2nd dam EX-90 made 37,000 4.0 BF. 3rd dam EX-91 made 30,000 3.9 BF. 4th dam EX-92 made 41,000 5.0 BF. 5th dam Showmore Elise, EX-97 made 38,000 4.3 BF.
- 30 good, young cows picked from one 25,000 lb. herd. Cows in all stages of lactation. All AI sired and bred, including 5 powerful dry cows. Fresh cows milking up to 130 lbs. and many bred cows still milking heavy! This is a good group of milky cows!
- Reg. 3 yr. Addison dau., fresh 7-7, 109 lbs. SCC 130,000. Dam VG-87, 4 yr., 382 34,271 1135 BF 1029 Pro. 2nd dam VG-85.
- 10 fresh 2 yrs. from one farm with 28,500 RHA, milking up to 100 lbs. The right kind!
- 8 AI sired, fresh, young cows and heifers sell from one herd. Fancy udders and lots of milk!
- 6 Reg., fresh and springing young cows and heifers from one herd with 25,000 lbs. Super udders!
- 6 Reg., fresh 2 and 3 yrs. from one herd with 27,500 RHA, milking up to 115+ lbs. The right kind!
- 6 Reg., fresh 2, 3 and 4 yrs., milking up to 130 lbs. from one 25,000 lbs. herd. Fancy udders and the right kind!

*Plus many more good, young cows with lots of milk. If you need fresh cows with lots of milk or bred back cows still milking heavy, we should have the cow you need.*

*Free chocolate milk • Not responsible for accidents*

Sale managed by: **FISHER'S QUALITY DAIRY SALES**

Jonas Fisher • 717-768-3297

Auctioneer - Dave Stoltzfus - AU005655 • Pedigrees - Dan Albright

BUY IN CONFIDENCE  
WITH ONE WEEK TRIAL!  
WE PAY THE SAME DAY

*Penns Valley  
Livestock*

600-700 HEAD!  
CHEAPEST COMMISSION  
AROUND!

## Horse Consignment Auction

**FRIDAY, AUGUST 30, 2024**

7:30 A.M. WITH AS-IS HORSES • 8 A.M. WITH WORK HORSES  
FOLLOWED BY PONIES, RIDERS, & DRIVERS

2925 Penns Valley Pike, Centre Hall, Pa. 16828 814-364-1796

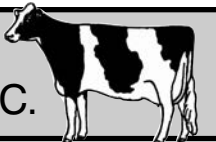
**GREAT SELECTION OF LOCAL AND DEALER HORSES!  
KITCHEN OPEN ALL DAY.**

**THANK YOU TO ALL THAT ATTENDED AND CONSIGNED TO OUR  
LAST MONTH SALE! A GREAT SET OF HORSES.** Call 814-364-1796 to  
catalog horses or fax to 814-364-1426. **MUST** be in Wednesday before  
sale to make deadline. **SALE LAST FRIDAY OF EVERY MONTH!**

<b>Auctioneers:</b>	<b>Managers:</b>	You can start bringing
Atlee Shetler - AU005270	David Bierly	horses in Thursday,
Vernon Yoder - AU005267	Erica Smith	August 29th at 2 p.m.

Free  
ice  
cream

**NEW HOLLAND  
SALES STABLES, INC.**



Free  
ice  
cream

Located 12 Miles East of Lancaster, PA. Just Off Rt. 23, New Holland

## DAIRY COW & HEIFER SALE

**WEDNESDAY, AUGUST 28<sup>TH</sup> • 10:30 A.M.**

**All quality consignments of cows,  
heifers and bulls are in demand!**

**Cows, bred and open heifers are selling at historical highs!**

**Consignors: Please send all info with truckers for the catalog.**

**For more information, contact dairy reps:**

Aaron Martin, 717-445-4825 (home); Bill Hough, 973-224-0204 (cell).

**REMINDER:**

*Thank you - N.H.S.S.*

**Feeder Cattle Sale. Friday, September 6th, start time 6 p.m.**

Sale Managed By

**New Holland Sales Stables, Inc.**

Barn 717-354-4341 Fax 717-355-0706 • David Kolb, Mgr. 61L

**PROF. HOOF TRIMMING** - RSW Farms LLC. Hydraulic table, competitive rates, serving MD/PA/NY. Contact Ryan 518-935-7704 or RSW-Farms@yahoo.com.

**MIKE'S HOOF TRIMMING** - Since 1988. Hydraulic table. 814-997-9021.

**PROF. HOOF TRIMMING** - call for more info/available dates. 570-690-1017.

**SHUMAN'S HOOF CARE** - Serving dairies in Northeastern & Northcentral Penna. and the Finger Lakes region of N.Y. Call Tom, 570-418-1684.

**CORRECTIVE HOOF TRIMMING** - New Tuffy -tilt table. Cow comfort, professional work. Call Sam Beiler 717-222-6180.

**NEED YOUR COWS** clipped? Call 717-768-8345 ext 1.

**STRUGGLING WITH MICE** and rats? Try First Strike. Oregon Ag LLC. Call 717-656-0067.

**DEAD ANIMAL REMOVAL.** Call Mike at 717-855-5503.

**DEAD ANIMAL REMOVAL.** Removal of dead farm animals. 717-228-9500. M-F 8-4, Sat. 8-11 or text.

**LIVESTOCK HAULING** Local/long distance. Pa., N.Y., Ohio, Va. 814-592-2543.

**17 foot Gollath Unloader, good condition. Call 717-363-6741**

**SOLLENBERGER SILOS**  
5778 Sunset Pike  
Chambersburg, PA 17202  
*Poured Concrete Silos for Farm and Industry Since 1908*  
For information call:  
**Ken Mansfield**  
717-503-8909  
www.sollenbergersilos.com

**SILO DEMOLITION.** 717-786-6063.

**HARVESTORE SILO REPAIRS,** extensions, and roof replacements. Call us at 717-786-6063.

**NEED YOUR EQUIPMENT,** building or house pressure washed? We have the equipment to do the job. Call us at 717-644-6295.

**DAIRY SERVICE TECH** - servicing all brands of dairy equipment. South central, Pa. Wes Sollenberger, 814-505-6304.

**CUSTOM COMBINING** services. Well maintained equipment. Reasonable prices. Call 315-573-6742 for more information.

**RESTORING GRANDPA'S** old tractor doesn't have to cost an arm and a leg! Full service repairs and restorations. Agriculture and industrial repairs. York Co. 717-368-1354.

**FARM MACHINERY REPAIRS,** NH small square baler parts, Discbines, Haybines, rakes, feed mixers, discs (new blades), forage harvesters and more. 607-243-5896.

**3 Dairy Equipment**

**BOUMATIC SUSPENDED** double six parlor, 3" low line, perfection meters, (4) 3400 and (8) 2700 automatic take-offs, variable speed pump. Offers over \$7000; 2 Calf-Tel hutches, bucket holders, hay racks. \$75 each. Call 717-548-3039.

**SURGE MILKING SYSTEM.** Dumping station, bucket units. 814-274-8354.

**SOYBEAN ROASTING ON YOUR FARM**

- Full-fat roasted soybeans for maximum feeding value
- High-energy, bypass protein and palatability
- Toxic enzymes and molds destroyed
- Custom roasting in MD, DE, PA & Southern NJ

**HORST GRAIN ROASTING**  
Chester Co., PA  
**(717) 926-4310**

**SURGE SIDE OPEN** milking parlor parts. Front and rear gates, some new, some used. Assortment of milker claws. Large assortment of 1 1/2" glass pipeline. Air cylinders for Surge side open parlor gates. Sullivan Co., Pa. 570-419-8981. (8/30)

**1250 GAL. BULK TANK,** 2 compressors, 400 feet of DeLaval pipeline, 60 inlets, 300 feet of 18" gutter grates. 570-903-0712. (9/6)

**DOWN COW HYDRO** therapy float tank, \$25/day. Blairsville, Pa. 724-309-1990.

**USED MILK TANKS - 400 gal.** Sunset; 800 gal. Mueller OH; 900 gal. Mueller OH; 1000 gal. Milkeeper, flat top (storage). T.H. Horning. 717-438-3104.

**4' X 6' COW MATS.** GOOD mat for the money and easy to install. \$80 each, including hardware. Call 717-304-6684.

**GUTTER GRATES FOR** tiestall barns. Innovative design prevents hoof injuries. Call for more information and current pricing. 717-464-6476.

**4 Dairy Cows**

**BUYING AND SELLING** dairy herds, heifers and service bulls. Aaron Coons, Call 717-816-4118.

**JUST FRESH, 1ST LACTATION** Reg. Holstein cows. Good quality, well grown animals. 3-4 generally available each month. 570-297-5118.

**5 Heifers & Calves**

**3 REG. HOLSTEIN** heifers due to calve in mid-Sept. Beautiful. 540-535-8431.

**TWO 9 MOS. OLD DAIRY** heifers. One Jersey out of Chrome. One Ayrshire, full

bred. \$1000 each. 223-216-0160. (8/30)

**LOOKING FOR REG.** springing heifers, fresh, 2 and 3 year olds, preferably freestall cows, to expand my herd. 814-386-0609. (9/27)

**6 Dairy Bulls**

**POLLED RC APPLES ARMY** son x VG-85 Rex x VG-88 Ladd-P. Barn favorite cow family. Delivery available. Other bulls available as well. Perry Co., Pa. 717-799-3699.

**REG. GUERNSEY BULL** A2A2. 15 mos. old. Wayne Co., Pa. 570-575-0293.

**7 Semen, Embryos**

**WATERLOO CHEERS EIFEL,** Cheers x Golden Dreams 93 x Shuttle 85 x 2 more Excellent dams, then Linjet Eileen. aAa 213, \$10/unit. 717-598-0563. (9/13)

**MR. KATHES KID ROCK** semen. 3 units, sexed. \$400. 717-527-0242. (8/23)

**WELCOME CLASSTOPPER** semen. A2/A2 aAa 213645 2-3 VG-85 +2798 GTPI. \$15/unit. Delivery available in some areas, can ship. Streamline Genetics, 607-965-0089 or 706-578-0731.

**HELSEL-HILL HAS** expanded. Call or text Keith Helsel for No Bull sires, Blondin sires, Resolution-Red, Furnace Hill Zas Endure, and more. 814-515-5455.

**CUSTOM COLLECTING - WE** custom collect your bull at our facility. Semen is processed with high quality standards at very competitive rates. We also offer short-term housing options during collection. Triple-Hil Sires 855-955-2100.

**Dealer Inquiries Welcome**

**We Ship Parts**

**ALL PLASTIC CONVEYORS AVAILABLE**  
Good for Under Silo Unloaders Or Any Wet Place, In 18", 24" & 30"  
Also Available: Standard Wooden Conveyors And Feeders  
In Business Since 1965  
**717-336-2244**  
**RISSLER CONVEYORS, LLC**

**Zimmermans**  
Glasslined Storage  
Oakland Mills, PA  
36 Yrs. Experience • Silos & Tanks  
**717-463-9731**  
www.silosandtanks.com

Pre-Owned Slurrystores® and Harvestores® in Inventory - Ready to be built

**FUSION®** TANKS & SILOS  
**AISTOR** Stainless Steel Engineered Roofs  
**Zabel Equipment** Hydraulic Manure Pumps  
**DRYHILL** Manure Pumps

**aFs automatic Hammermills**  
**E. RISSLER MFG.** Spiro Mixers  
**Quality Parts, Inc.** Harvestore® Aftermarket Parts  
**Challenger** Slurrypump HOT-DIP GALVANIZED

Rebuilt Harvestore® Unloaders In Stock - installed with a 2 year warranty  
**WE SERVICE WHAT WE SELL**

**SERVICE DEPOT**  
Alvin Eberly Harrisonburg, Va. 540-820-0818  
Norwain Acres Orrville, Ohio 330-621-1276  
Zimmermans Oakland Mills, Pa. 717-463-9731

Zimmermans is not affiliated with CST Industries, Inc.

**8 Lambs & Goats**

**DAIRY BILLIES, \$190 EACH** Delivery available. Lancaster Co., Pa. 717-335-2563.

**9 Equipment & Machinery**

**NH 316 SQUARE BALER** with thrower. One owner, shed kept, good condition. Trucking available. \$4900. 814-662-4183. (9/13)

**WEAVERLINE 436, 4000** hours, recently overhauled, \$2000; plate cooler, \$1000. 717-598-0563.

**4300 HOULE SPREADER.** Good undercarriage, brakes, tank needs to be patched or replaced. Best offer over \$4000. 717-548-3039.

**NH 489 HAYBINE.** NH rake. Hydraulic double rake hitch. Hydraulic 3 pt. bale spear. Moisture testers. 814-274-8354.

**FORAGE HARVESTER.** 2009 John Deere 7350 with 6-row large drum head and kernel processor. 2,970 drum hours. 13.5 liter with 472 HP. 4WD. New KP rollers, transition liners and rear tires. 717-400-7917. (9/6)

**BOUMATIC MILK PUMP** with almost new motor, \$500 OBO; KMC black 17" mag wheels, \$200 for set; 5120 Case IH, cab, 4WD, \$22,500. 484-388-6856.

**NEW HOLLAND 3PN** three row corn head. FP240 hook-up. Good condition, field ready. Late model. \$7800 OBO. Call for more information. 717-351-0353. (8/30)

**2023 BEARCLAW 20 TON** construction trailer, \$50,000; Esch 5612, drill, 198 acres, \$45,000; HS 18 ft., tandem, gear, 14 ton, twin auger, \$16,500; JD 567, twine, \$20,000. 859-608-9745.

**CLAAS FORAGE** harvester 2012 Jaguar 930 with kernel processor. 2,670 hours, 494-series, 4WD, rear weights. MB engine with 410 hp. Over \$10k in repairs. \$135,000 or \$157,000 with 6-row head. 717-400-7917. (8/30)

**NEW HOLLAND 53A** bale thrower, good condition, with hydraulic bale chute, back and forth. \$400 OBO. 717-365-3659. (8/23)

**FOR RENT: E RISSLER 330** trailer TMR mixer, \$30/day; IH Rissler 510 TMR cart, \$10/day. Delivery avail. Myerstown, Pa. 484-793-2179.

**10 Feeds**

**1ST, 2ND & 4TH ALFALFA** tested, 3x4x8' Chinook dried straw. Delivered or FOB. 610-767-2409, www.heidelhol lowfarm.com.

**BUYING DAMAGED GRAIN.** Trucking is available. Call 717-575-5197.

**CERTIFIED ORGANIC KEMP** meal. Redmond minerals. Dealers available in select areas. Hess Farm Supply. 717-354-9492.

**11 Hay**

**LARGE BALES MIXED HAY** balage, clover, grass, alfalfa for mulch. Narvon, Pa. 717-445-4463. (9/13)

**CERTIFIED ORGANIC** dairy quality 2nd and 3rd cutting, clean, out of field, you wrap. 1st cutting 4x5 dry round bales. Buy now and save. 570-250-1725. (9/30)

**CERTIFIED ORGANIC** baleage, 4x5. \$50 each. Blairsville, Pa. 724-309-1990.

**HIGH QUALITY 1ST & 2ND** cutting grass hay, 3x3x7 bales, low potassium. #1 hay, tested. Lebanon Co., Pa. Con-Gen Farms. 717-821-1454.

**CERTIFIED ORGANIC** mixed grass and clover hay. Call from 7a.m.-4 p.m. 717-463-9731, leave message.

**ROUND BALES OR LARGE** squares. Delivered by ton loads. Coons Farms. 717-816-4118.

**HAYBUSTERS** - Dairy and beef quality alfalfa, low K hay and straw. Large and small squares. Call Mark at 800-371-7928, or visit www.haybusterson.com.

**FINE GROUND Wood Bedding**

**Dry, Absorbent BEDDING For Sale**

14 yd. 30 yd, and 110 yd loads  
Call for Pricing

**Buy in bulk and save!**

**BEILER INDUSTRIES** **717-768-7667**

**Sell your Holsteins through PHA!**

- Wanted: 200/month! Reg. or sire ID'd open heifers, ready to breed. Must be negative Leucosis, BVD & Neospora. Call today!
- Wanted: 400-700 lb. sire ID Holstein heifers.

**Upcoming sale:**

- September 6, 2024 – "Know What You Buy" Heifer Sale, Middletown, Pa.
- October 26, 2024 - Nittany Lion Fall Classic. Selections underway.

**PA Holstein Sales**  
Pennsylvania Holstein Association  
*Herd dispersals done right by trusted sales management that is licensed and bonded!*  
Contact: David J. Lentz, 717-329-9202, dj1018@pa.net or PHA office, 814-234-0364. Email: director@paholsteins.com

**WHOLE SHELLED CORN**

• WHOLE COTTONSEED • CORN • 48% SOYBEAN MEAL • ROASTED SOYBEANS •

CANOLA MEAL LINSEED MEAL

**TRIPLE • M • FARMS**

**Custom Feed Mfg.**

**WE MIX FEED ACCORDING TO CUSTOMER AND NUTRITIONIST FORMULAS**

Also Available:  
**BULK COMMODITIES**

Call Us At:  
**(717) 272-3225**

MINERALS NON-GMO

• TURBO MEAL • AminOleic • BLOOD MEAL • BEET PULP • FATS •

**3/32" FINE GROUND CORN**

**MOBILE SEED CLEANING**

Small grain only.  
Flexible schedule.  
Serving PA, MD, WV and VA.

**Golden Grain Seed Cleaning**

**301-992-3526**

## 12 Straw & Bedding

**WHEAT STRAW - NICE** yellow, no rain. Tight bale, small square. \$4/bale at barn. 681 Red Hill Rd., Narvon, Pa. (8/30)

**HIGH CALCIUM**, barn dry, works great in dairy barns. One ton on a skid, bagged in 50 lb. bags. \$115/ton. 717-368-2826. (8/30)

**HORSE-QUALITY STRAW** in 15 bale bundles. All from JD walker combine. Also, alfalfa. 301-988-1057.

**CHOPPED STRAW** in 3x3x6 bales. Good for bedding or TMR mixers. Available now. Lebanon Co., Pa. Con-Gen Farms. 717-821-1454.

**HIGH QUALITY SAWDUST** available for delivery. Great sawdust for dairy and beef cattle. Call 301-334-6212 for delivery range, pricing and availability.

**USE BALED SHAVING** in your dairy barn. You'll love this very fine pine bedding. \$5.50/40 lb. bag. 610-273-3602.

**HAY OR STRAW**-any type or quality. Call 717-253-6049 for pricing.

## 14 Tractors

**INTERNATIONAL 3088**, ROPS, 5670 hours, 4 new tires, fresh paint, very good condition. \$19,000 OBO. 570-419-8981. (8/30)

**IH 1456 TRUE GOLD** Demonstrator. Has black steering column and gold paint under hood. New injector pump and tips. Best offer. 814-541-3223. (8/30)

**AUTO-STEER KITS. AT1** and AT2 GPS guided auto-steering kits from FJDynamics. Easy to install, simple to use. No hydraulic modifications to tractor.

Call for details and pricing. 717-400-7917. (9/20)

## 17 Silos

**SILO UNLOADER WINCH;** Harvestore silo sheets. 717-363-6741.

**USED A.O. SMITH** model 1250 Slurry Pump with agitation nozzle and load out line. 717-463-9731.

**SILO DEMOLITION.** Contact Beiler Silos. 570-745-3574.

**HARVESTORE SILO ROOFS,** affordable white or stainless. Solve spoilage. Sheet replacement, silo demolition. Parts and repairs on Harvestore and stave silos. Call us at 717-517-2080.

**HARVESTORE SILO REPAIRS,** also demolition and removal. Used replacement blue or white silo roofs, door frames, doors, lids, breather bags. Installation available. 717-768-0452.

**BEILER SILOS - SILO PARTS,** sales and service. New and used silos. Shotcrete relining. Foundation repair with Shotcrete. Tear down and rebuild. Silo doors made to order. 20 years experience. Serving Lycoming and surrounding Co. Jersey Shore, Pa. 570-745-3574.

**I BUY USED SLURRYSTORES.** Phone 315-404-6721 or 315-495-6506.

**SILO DOORS,** galvanized steps and latches, poly door panels cut to size for all types of silos. Quality products are always a good investment. Meadow Springs Farm, Gordonville, Pa. Sales brochures and quotes call J. Elmer 717-768-3337 ext.1.

**RE-BUILT SILOS,** New or used, relines, parts and repairs. SR Silos 717-527-4103.

**S & S SILO SERVICE -** We erect silos, repair silos with

shotcrete, repair concrete walls, stone walls, and foundations with shotcrete. Serving the shotcrete and silo industry for 25 years. 610-273-3993.

**MANUFACTURERS** of silo doors and hardware. Double thick tongue and groove cedar poly and plywood doors. Hardware is powder coated. Agri-Door. 717-949-2034.

## 19 Real Estate

**VACATION OR** year round property near Route 80/ Route 15. Beautiful views, near State Gamelands. Natural gas area. Something for the whole family. 717-856-2024.

**THE GET-R-DONE REALTOR.** Rodney Rice, 717-729-9501. 50 years serving farmers selling, buying, auctioning. Landfarmrec-JAK Real Estate. 717-753-5510.

**TO BUY/SELL REAL ESTATE** in Pa. call Thomas Hershey at 610-209-7096. Hershey Farm Agency, Inc., HersheyAuction-LLC.com. 800-880-3831.

**BEILER-CAMPBELL** Realtors and Auction Services, Farm and Land Division. Are you looking to purchase or sell a property in Pa. or Md. Call Chris Taylor, office mgr., 888-786-8715 for an auctioneer or realtor.ctaylor farms.com.

## 20 Wanted

**LOOKING FOR JD 6000** series self-propelled forage harvester in good working condition, including 4 or 6 row head and pick-up head. 717-400-7917. (8/23)

**DAIRY HEIFERS; VIRGINIA** milk commission base; 258 hay rake with dolly wheel. 610-932-8404. (9/27)

**CERTIFIED ORGANIC** dairy heifers. 2 months old to springers. 570-250-1725.

**HOLSTEIN, JERSEY** and/or Ho Jo's freestall dairy milking herds/groups and complete heifer programs for expansion. All sizes/types needed. 570-504-4443. (12/6)

**LOOKING FOR REG.** springing heifers, fresh, 2 and 3 year olds, preferably freestall cows, to expand my herd. 814-386-0609. (9/27)

**BUYING OLD ISSUES OF** Holstein World, Jersey, Brown Swiss, etc. (all other dairy cattle breeds) magazines, sale catalogs and sire directories. 716-255-5625.



# PUBLIC AUCTION



## Soltys Dairy Herd Dispersal

Located on farm at 189 Whitts End Lane, MILTON, Pa.

**Thursday, SEPTEMBER 5, 2024**

Starting 11:00 a.m. w/ dairy equipment

### 165 Holstein Dairy Cattle, 2 Robots & Dairy Equipment

#### 165 SIRED ID'D HOLSTEIN DAIRY CATTLE

Herd consists of 102 **ROBOT TRAINED** milking age animals, (44) 1st calf, (20) 2nd calf, (28) 3rd calf, (10) 4th calf. Year-round breeding (mostly natural heats). July 30 average 90 lbs. 4.2 3.2 SCC 250,000. (12) from 100 to 137 lbs. (22) confirmed bred heifers, (16) bred heifers, (24) open from 12 mths. to breeding age. Genex semen, sexed, conventional, Angus. Vacc. on 7-19 with Triangle 10, Salmonella Newport & Bacterial Extract. All Sire ID'd. Catalogs at ringside w/ DHIA records.

**CLOSED HERD FOR OVER 20 YEARS !!**

#### DAIRY EQUIPMENT

Sells first @ 11 a.m. Lely A4 Astronaut robot unit (right hand) w/ control unit; Lely A4 Astronaut robot unit (left hand) just the unit. Mueller 3000 gal. bulk tank w/ compressor, 2 agitators, s/n 133667, 1 owner, bought in 2013. 100 gal. buffer tank. Mueller AT4-DWD-51 plate cooler (51 plates). 140 robot collars.

Live in-person and internet bidding with:



**Fralely Live**



1515 Kepner Hill Rd.  
Muncy, PA 17756  
570-546-6907 | fraleyauction.com  
AY001971



FRIDAY, AUGUST 30, 2024 7PM

# Mifflin County Summer Event

MIFFLIN COUNTY YOUTH PARK • GPS Address: 100 Mill Road, Reedsville, PA



**WOODEDGE MARK PASTA,**  
5E-91

Mark Pasta is a foundation cow for Woodedge. She is the 5th dam of a fantastic fresh Crush-time fresh mid July. Dam is EX-91 Callen then 88 Gold Chip x 3E-92 Hi Metro x 90 Outside.

WOODEDGE FARM



**TERRA ROSE COLT GUCCI-ET**  
EX-93

Gucci is breeding true with four Junior AA Nomitaions from and her daughters. Selling is her granddauger Fall Yearling in Milk Gran-daughter sired by Candyman and due in mid September to sexed Canadian Club.

GRANT YODER



**M-RIVERVIEW AFTRSHOCK**  
ATLEE EX-91

Atlee was a highlight of our 2017 sale as a beautiful bred heifer. Selling is her Doc granddaughter fresh 7/21 from her 88 Solomon daughter.

KENT YODER



**OAKFIELD GC DARBY**  
EX-953

Darby is one of Gold Chips best and was Res Grand Champion of WDE and The Royal in 2019. Selling are 5#Doorman embryos by Darby's EX-2 mat sister.

KLINEDELL, LLC

#### Special Mentions:

- #1 IVF embryos by Architect from Luck-E Avalanche Aka-Red, EX-94 then Advent Asia! • JORDAN HORST
- Beautiful Lambda heifer due 9/29 to Doc from and 85 Denver x VG 1st Class x 3 more EX! • MATT HAUCK
- a 6/23 Luck-E America x 85 x 90 x 90 x 94 x Tony Beauty sells ready to breed! • STITT & SELLERS
- Handshake heifer bred to Logic-PP x 91 Mayfield back to Durham Perfume, 3E-94 • DEANN BYLER
- AOT Honour due early December x 86 Table with nearly 200,000 lifetime x 88 Bogart back to Outside Mint • PEACH BROOK
- Early Fitters Choc fresh mid July x GP Tropic x 88 AllClass x 2 more VG Dams with loads of production • MILLWORK
- Sweet Hancock JR 3 already VG-86 2y and fresh again in July. Dam VG Solomon x 88 x Damion Shine, 2E-92 then 9 more VG or EX dams • SAM MCWILLIAMS
- Fancy Doorman x 93 Aftershock x EX Goldwyn x Storm Allison, EX-94 CAN • CALEB BYLER
- Fresh RED Apex already GP-84 2Y x 86 Awesome back to Elegance • DRYHOUSE
- Fresh Captivating x 88 Union x GP Bankroll x 10 more VG or EX dams • KELVIN MARTIN
- Fresh Doc x EX Undenied from Penn-Dell's foundation "R" family • PENN-DELL

#### Sales Staff

Don Chesney • AU5039  
Daniel Brandt, Pedigrees • 717-821-1238  
Michael P. Yoder, Sale Chair • 717-437-5846  
David J. Lentz • 717-329-9202  
Matt Zimmerman • 717-222-0101

JOIN US ON THURSDAY EVENING, AUGUST 29 AT 7PM FOR THE **MIFFLIN COUNTY HOLSTEIN PICNIC AND SALE PREVIEW NIGHT**. CHICKEN BAR-B-Q TICKETS ARE \$5 EACH. RESERVATIONS CAN BE MADE TO VERNON YODER OR DUSTIN KAUFFMAN BY **MONDAY AUGUST 26**.

**SPONSERED IN PART BY EAST GATE FEED & GRAIN AND CENTRE HERD HEALTH SERVICES**

Vernon Yoder • 717-994-2391  
Dustin Kauffman • 717-250-6077  
Erick Byler • 814-506-6795  
Sue Sellers • 717-437-5533

**BUYING HARVESTORE** silos & Slurrystores. Call 717-517-2080.

**I AM STILL LOOKING FOR** used books and publications about dairy farming, printed early to late 20th century. Interested in all farming related topics. Paying cash. Phone Owen Backus, 608-479-0811.

**I BUY TRUCKER HAT** collections. 215-896-5609.

**21 Opportunities Wanted**

**I WOULD LIKE TO MILK** for somebody in your tie stall barn. Saturday and Sunday evenings. Lancaster Co., Pa. 717-335-2563.

**EXPERIENCED PERSON** looking for farm job or dairy barn to rent. 814-442-5782.

**I'M SEEKING WORK ON** family farm with small house. Most any area. Prefer part-time +. 717-816-9693.

**EXPERIENCED PERSON** seeking full time employment on dairy, beef or horse farm in Western Pa. or Western Md. Some type of housing needed. 717-487-5170.

**YOUNG FARMER** looking for a dairy farm to rent. Ideally rent to own situation in Pa. or Md. 717-824-1320.

**A FARMSHINE CLASSIFIED** could be your "ticket" to a bargain.

**22 Help Wanted**

**200 COW FAMILY FARM** in Pylesville, MD, is looking for general help on farm. Full time or part time, house available. 443-617-2490.

**24 Seeds**

**ALFALFA, GRASS MIXES,** oats and sorghum. Hefty brand and Augusta seed com. Jacobsen GT soybeans. Leabrook Ag, call us at 717-898-9576.

**NEED SEED OATS?** We can obtain almost any variety. Also publish quarterly oat market-

ing newsletter. \$12/year. J.C. Goss, Box 312, Hurley, MO 65675, 417-708-7860.

**KING'S AGRISEEDS,** feeding your farm's future through high energy forages, and soil building cover crops. Lancaster, Pa. 717-687-6224, info@kingsagriseeds.com, www.KingsAgriSeeds.com.

**CORN SEED. PRICING** starting at \$129/bag (before discounts). De Dell Seeds, the leaders in Non-GMO corn. 519-264-CORN.

**ALFALFA, CORN, SOY-BEANS** and more! Call us for all of your crop needs. Growmark FS-Eighty Four. 724-222-4303, www.growmarks.com.

**25 Miscellaneous**

**FARMALL CULTIVATOR** parts, draw bars, hillers, shanks, Planet Jr. push cultivators tools, Craftsman 4' push blade, wood and metal tool boxes, primitive furniture, bicycles, pottery, antiques. 856-358-8625 or 609-364-8339. (9/6)

**MASTER AI OF DAIRY CATTLE** at Vermont State Univ., Randolph, Vt. Learn bovine cycles, AI techniques, and palpation. Two-day training on Sept 6-7. Register: https://cewd.vtc.edu/agriculture-and-food-systems/food-systems-trainings/.

**CUSTOM MADE CLEAR** poly carbon doors, including custom manufacturing and repair. Also, hot beds and little greenhouses, stainless steel water troughs, horse barn grills, gates and doors. Sunnyside Welding, Manheim, Pa. 717-361-8853, x 4.

**STOP FLIES. GREAT** products. Fly parasite plans. Cedar solar traps (the best). Zapper that just keeps zapping. www.dairyflyparasites.com. 888-771-3276. Useful Farm Products.

**LOOKING TO GET RID** of insects? Buy bluebird or tree swallow houses. Plus more. 717-529-2326, ext. 1.

**CLEANING OUT YOUR** attic? We'll take any magazines, newspaper, books, etc. for old man to shred for horse bedding. Call now. 717-529-2326, ext. 1.

**SEE FARMING IN N.Y.** through the eyes of an 11 year old. Visit Youtube and search "4th Gen Dairy Farmer" for videos. Call 716-474-1705 for more information.

**HORSE, DONKEY AND** calf blankets. Reasonably priced. Dealers welcome. Call 717-361-4474.

**POLY SILO DOORS** - Steel horse hitches; pine shavings; pine bedding pellets; Meadow Springs Farm, Gordonville, Pa. 717-768-3337, ext. 1.

**PAINTED MILK CANS** - farm scenes \$200 or have one custom painted with cows, horses or any family pet. Carroll County, Md. 410-259-1276.

**OLD AERIAL PHOTOS** of your farm or home dating back to 1963. Nathan Lewis 888-402-6901 or vintageaerial.com.

**27 Livestock**

**ANGUS BEEF, READY FOR** slaughter. 570-488-6596.

**Fraleley's Annual Fall Consignment Auction**

At the Fraley Farm Complex, 1515 Kepner Hill Rd., Muncy, PA

**Saturday, SEPT. 14, 2024 • 8:00 a.m.**

**YOU CAN SELL AND YOU CAN BUY!**



**Taking consignments of:**  
Tractors ~ Farm Equipment  
Construction Equipment ~ Trucks  
Trailers ~ Vehicles ~ Lawn Tractors  
Lawn Equipment ~ RTV's  
4-Wheelers ~ Snowmobiles  
Golf Carts ~ And More!

1515 Kepner Hill Rd.  
Muncy, PA 17756  
570-546-6907 | fraleyauction.com  
AY001971

**For free advertising, you must call the office by August 24, 2024**

**The Fraley Flare-Up Auction**

At the Fraley Complex, 1515 Kepner Hill Rd., Muncy, PA

**Saturday, SEPTEMBER 7, 2024 11:00 a.m.**

**Selling 90 head**

*70 lactating cows just fresh or due soon, some show age calves. Milk, Protein and Butterfat Galore!*

- 8 Ayrshire**
- 12 A2A2 Guernsey**
- 40 Jersey**
- 20 Holsteins**
- 10 Milking Shorthorn**

*Trucking will be available immediately following the sale.*



*Catalogs will be online at DairyAgendaToday.com and Cowbuyer.com*

**Watch Facebook for updates**

1515 Kepner Hill Rd.  
Muncy, PA 17756  
570-546-6907 | fraleyauction.com  
AY001971



**"Know What You Buy" Heifer Sale**

**Friday, September 6th, 2024 at 10 a.m. at the PA Holstein Farm**

**GPS address:** 1806 River Rd., Middletown, PA 17057

*(just a few miles from the Harrisburg International Airport)*

**150+ High Quality Holstein Heifers Sell**

**Heifers of all ages & stages will sell from close springers due in September (instant milk) to 4-month-old calves. All cattle are vaccinated and vet inspected for ultimate buyer confidence! 95% of the heifers will have sire ID, if not Registered! Countless bred heifers are bred to sexed semen! The market is way UP!!**

**These heifers are fresh off of top dairies from across the Mid-Atlantic region of the United States! Here's a sampling of those top dairies:**

Brook-Corner Holsteins, Singing-Brook Farms, MD-Maple-Dell Farms, Velvet-View Farms, Penn-Dell Holsteins, Campbell-Run Holsteins, Esbern-OM Holsteins, Leaseway Holsteins, Vale Wood Farms, Talview Dairy, MiddleBush Farms, SueRaines Holsteins, Trotacres Farm, Nicoletto Farms, Topp-View Holsteins & Jerseys, PCJ Jerseys, Faus Family Farms, Vista-Grande Cattle Co. and many more coming in everyday!



**MD-Maple-Dell Shot Sari-ET 2E-95**  
4 offspring of this prolific cow sells. She has a 2E-94 full sister and they have a 92 Durham dam w/ big fat (4.7 to 5.2) records. Sires include Puzzle, Crushabull and Renegade (bred heifer due 12-17 to Too Hot). Also, two from the After Inez 2E-94 & Roy Image 2E-95 family by Dropbox & Crushabull. 6-23 Dropbox from Goldwyn Africa-Ashlyn family. More big pedigree yearlings by Puzzle, Luster-P & Hancock!  
All from **MD-Maple-Dell Farms**



**MS Donwaland Talent Tilly-ET 4E-95 GMD**  
She's the first cow in the Breed to be 6th generation of EX-94 or higher scored! She has in excess of 25 EX offspring including a 2E-90 Defiant that is the dam of a dynamite Doc fall calf which sells! 12-23 RED Willows x 86 Jordy back to MS Roll-N-View Althea-RED then to Apple!  
**Sueraines**



**Sunnyville Altitude Jayce RC EX-93**  
She was just 3rd place four-year-old at the Mid-East Summer National, Grand came from same class. Jayce's Luster-P Spring calf sells! Also sending an RC 6-24 Warrior x 87 2yr Hanans x 90 Redburst x 4E-96 APPLE! 9-23 Jersey by Daredevil x NC Ferdinand x 94 HG Dixie x 94 Dasher x 97 Veronica.  
**Topp-View**

Delta Lambda winter Yrlg due late April to Analyst x Hanalee G Chip Marley EX-94 and RED 6-24 Analyst x GP-84 VG-MS Defiant x Limited-Red 2E-94. Also, three Jerseys from Huge Pedigrees: Two from Councillor Sheba EX-96 Victorious due 3-2 to Hidalgo & 7-23 Victorious. AND Frank due 3-4 to Hidalgo x EX x 94 x 95 x 95 Renn Anastasia!  
**Finke**

Family members sell from these enticing cow families, WKV Promis/Pala, Sandy-Valley Atwood Barbie, Roxy's through the Lucinda Rae branch, & many more.

Numerous heifers coming from 30,000 herds with Sire ID!

**Consignments are still welcomed, especially shortbreds and ready to breed heifers and springers for the "Super Strong" domestic market! Please attend the sale, but if you can't, the sale will be on www.Cowbuyer.com**

**Sale staff:** Chris Hill 202-255-7907 - Auctioneer AU005197; Neal Weaver 570-898-6365; Dave Bitler 610-780-6667; Matt Zimmerman 717-222-0101.



**Sale managed by: PA Holstein Association**  
State College, PA  
contact@paholsteins.com  
David J. Lentz 717-329-9202

**BULLS OFFERED BY BREEDERS, FOR BREEDERS**



**712HO01031 ADAWAY GW  
BERNARD-ET**



2nd Dam: ADAWAY TRY ME 2541-ET GP-83

**WAR GEAR X PARSLY X TRY ME**  
**+3235 +1151 +1178 +196**  
**GTPI<sup>®</sup> NM\$ MILK CFP**  
**-0.6 +1.98 +2.56**  
**DPR PTAT UDC**

**Bred & Owned by:**  
**Adaway Dairy,**  
**Waucoma, IA**

**712HO01029 ARIZONA  
KEVIN-ET**



**KAHN X CONWAY X ROOSTER**  
**+3236 +1244 +1484 +192**  
**GTPI NM\$ MILK CFP**  
**+0.1 +1.46 +1.60**  
**DPR PTAT UDC**

**Bred & Owned by:**  
**Arizona Dairy Company,**  
**Gila Bend, AZ**

**712HO01024 DEWGOOD  
HIGH CALIBER-ET**



**OVERDO X ALTAZAZZLE X CRIMSON**  
**+3134 +1078 +942 +171**  
**GTPI NM\$ MILK CFP**  
**-0.1 +1.51 +2.04**  
**DPR PTAT UDC**

**Bred & Owned by:**  
**Dewgood Holsteins,**  
**Oconto, WI**

**712HO01030 COLDSPRINGS  
JITTERS-PP-ET \*RC**



**REMOVER PP X DONZINO  
X WEBSTER P**

**+2871 +801 +1606**  
**GTPI NM\$ MILK**  
**+139 +2.39 +2.29**  
**CFP PTAT UDC**

**Bred & Owned by:**  
**Coldsprings Farms,**  
**New Windsor, MD**

**712HO01026 HIGHERRANSOM  
HANK AARON-ET VG-85**



**PEARCE X VG-88 LAMBDA X  
EX-96 KING DOC**

**516324 +3075 +1275 +138**  
**aAa GTPI MILK CFP**  
**-0.5 +3.09 +3.11 +2.15**  
**DPR PTAT UDC FLC**

**Owned by:**  
**Pine-Tree Dairy,**  
**Marshallville, OH**

**712HO01028 TOWNLINEACRE  
LARIAT-ET**



Dam: TOWNLINEACRE KING DOC LENA EX-93

**LUSTER X EX-93 KING DOC X  
VG-85 DOORMAN**

**+3.10 +2.32**  
**PTAT UDC**  
**+2754 +867 +91 +0.6**  
**GTPI MILK CFP DPR**

**Bred & Owned by:**  
**Townline Acres Holsteins,**  
**Birnamwood, WI**

**Order online or through your Holstein Association USA Regional Sales Representative!**

**HOLSTEIN MARKETPLACE SIRES**

[www.holsteinusa.com/marketplacesires](http://www.holsteinusa.com/marketplacesires) | Customer Service: 800.952.5200 | Office: 1.802.451.4285  
 Holstein Marketplace Sires Manager-Tim Ziemba | Cell: 315.730.3312 | [tziemba@holstein.com](mailto:tziemba@holstein.com)



**LIKE NOTHING ELSE**

# SILO-KING®

SCAN THE QR CODE TO LEARN MORE



- ★ REDUCE DRY MATTER LOSS    ★ LESS HEATING
- ★ SPEED FERMENTATION    ★ IMPROVE DIGESTIBILITY
- ★ ENHANCE NUTRIENT RETENTION

**Southeast PA**  
*Regional Manager:*  
 Lititz, PA  
 Scott Forbes  
 (717) 572-6182

Airville, PA  
 Jarrett Wilson  
 (717) 916-2224

Kirkwood, PA  
 Les Hershey  
 (717) 989-1808

Manheim, PA  
 Steve Kauffman  
 (717) 940-4474

Manheim, PA  
 Brent Neely  
 (717) 371-7391

**Lancaster Area PA**  
*Regional Manager:*  
 Chad Martin  
 Brownstown, PA  
 (717) 314-2460

Lebanon, PA  
 Noah Gesford  
 (717) 805-4075

Newville, PA  
 Kyle Kotzmoyer  
 (717) 422-1356

Stevens, PA  
 Eamonn Walton  
 (609) 367-3602

**Central/Western PA**  
*Regional Manager:*  
 Dan Ingle  
 Tyrone, PA  
 (814) 935-8610

Centre Hall, PA  
 Keith Hershey  
 (814) 571-8795

Kittanning, PA  
 Matt Smith  
 (724) 525-0334

Millmont, PA  
 Ken Heimbach  
 (570) 847-9150

Watsontown, PA  
 Jim Ulmer  
 (570) 490-4166

Winfield, PA  
 Keith McCool  
 (570) 847-8645

**South Central PA**  
 Hollsopple, PA  
 Nathan Spory  
 (814) 341-9134

Chambersburg, PA  
 Brian Horst  
 (717) 360-0483

Shippensburg, PA  
 Ed Okuley  
 (717) 816-6082

**Area-wide**  
 Tyrone, PA  
 Dave Russell  
 (814) 935-2640

Watsontown, PA  
 Don Sanders  
 (570) 713-4393

**PA Warehouse**  
 Lititz, PA  
 (717) 581-1558



**“CAPTURING THE NUTRITIONAL VALUE IN FEEDS IS THE KEY TO PROFIT.”**