

# FARM SHINE

We rise every week to cover farmers and agribusinesses

Farmshine • Volume 45, Number 47 • \$20 one year

Mailed the day before →

July 26, 2024



## Pa. Holstein Juniors recognized for largest membership gain

Pennsylvania's entire Junior delegation was recognized at the National Holstein Convention late last month for gaining the most new members (54) during the past year. Pictured in front are Emily Couch, Julia Briechle and Ethan Hoffman. Second row, left to right: Brooke Calkins, Jillian Anderson, Saleh

Lewis, Kristen Houser-Whitehill, Lauryn Irwin (holding plaque), Alexa Hoffman, Madelynn Hoffman, Lydia Couch. Third row, same order: Ian Briechle, Sara Reed, Madison Soden, Elyse Mead, Landon Jenkins, AJ Wanner, Jacob Bramm, Aiden Empet, Jordan Anderson and Madison Mowrer. Aside from

this honor and the fact that they won both the senior and junior divisions of the Dairy Bowl (see front page of Farmshine, July 12 edition), Keystone State Holstein Juniors placed well in numerous other contests. See the article and pictures, beginning on page 5.

### EDITORIAL

## 'Wouldn't it be great if we could unite the country with whole milk?'

By **SHERRY BUNTING**  
Special for Farmshine

Those words were messaged to me by a friend and colleague a year ago, right after the Whole Milk for Healthy Kids Act had passed the House Education Committee in bipartisan fashion before the overwhelming passage on the House floor last December and before Senate Ag Chair Debbie Stabenow (D-Mich.) blocked it.

This was my first thought, when former President Donald Trump announced Senator J.D. Vance of Ohio as his running mate in the Republican campaign.

Like others, I've been involved in the effort

to bring the choice of whole milk back to schools for more than a decade. It's about natural, simple goodness — to simply strip away the federal ban and allow hungry, learning children to be nourished by milk they will love.

Looking back at the years of this long fight, I realize that if it's so painstakingly hard to get something so simple and so right accomplished for America's children and farmers, we've got problems in this country.

With President Joe Biden now withdrawing from the campaign for a second term, and Vice President Kamala Harris as presumptive nominee launching her campaign this week in the Dairyland State, I'm re-

mindful of where she stands on such things.

Harris is no friend to livestock agriculture. She was an original sponsor of the Senate version of "The Green New Deal." She has strong positions on climate change that may lead to harsher rules on methane emissions and water consumption in the dairy industry, while perhaps promoting methane digesters, which are not an equitable nor necessary solution. Cows are NOT the problem!

Some in the dairy industry are on record stating that this would be good for dairy because the DMI Net Zero goals fall in-line and tout some of the same objectives. But no matter how you slice and dice all the fancy offsets, insets, innovations, grants, projects

and the billions of dollars, the bottom line leaves cattle holding the bag.

**Cattle are in the crosshairs of a very long game set to control land, food and people.**

Harris has already indicated she would use the Dietary Guidelines to reduce red meat consumption on the basis of this erroneous climate impact claim about cattle that we are all being brainwashed to quite literally buy into.

As a presidential candidate in 2019, in a CNN town hall, she was specifically asked: "Would you support changing the Dietary

turn to page 3

### PERIODICAL • DO NOT DELAY

Auctions and events .....	6	Horse Progress Days .....	16
Brown Swiss news .....	18	Jersey breeders reminded .....	11
Classified advertising .....	20	Market Moos .....	4
Heifers in demand .....	7	N.J. Holstein picnic .....	12-13
Holstein Juniors honored .....	5	NYFB scholarship winners .....	9
Holstein show highlight .....	15	Vermont DHIA reports .....	8

“Appreciate your **common sense** philosophy.”  
 — K.R.H., Virginia



We welcome you to send in your subscription request now. We are THE weekly dairy farm family magazine, since 1979.

Two Years \$38 • One Year \$20

Name: \_\_\_\_\_  
 Address: \_\_\_\_\_  
 Town: \_\_\_\_\_ State: \_\_\_\_\_ Zip: \_\_\_\_\_  
 Phone or e-mail: \_\_\_\_\_ New / Renewal (Circle one)

Mail with payment to FARM SHINE, 342 E. Main St., Ste. 201, Leola, PA 17540

## Breakfast at Ag Progress slated by CDE

HARRISBURG, Pa. — Pennsylvania agriculture professionals, as well as dairy, beef, poultry, pork and small ruminant producers, are invited to the Animal Agriculture Industry Breakfast on HPAI and Why Biosecurity Is Essential. It will be held on Wednesday, August 14, during Ag Progress Days. The event will include a free breakfast and conversations about how to be proactive with biosecurity protocols in light of Highly Pathogenic Avian Influenza (HPAI) affecting dairy herds and poultry flocks in the United States. The event is free but pre-registration is required at [www.centerfordairyexcellence.org/industry-breakfast](http://www.centerfordairyexcellence.org/industry-breakfast) or by calling 717-346-0849.

“Across the PA animal agriculture industry, everyone has a role to play in biosecurity and being proactive to mitigate the spread of HPAI. This year’s Animal Agriculture Industry Breakfast is a true representation of that, as members of all sides of the animal ag industry come together to talk about this real-time, rapidly evolving issue,” said Jayne Sebright, executive director at the Center for Dairy Excellence.

During the breakfast, attendees will learn how the disease moves, how we can protect our herds, and why biosecurity on the farm matters to end users like packers and integrators. Lisa Graybeal, Pennsylvania Deputy Secretary for Animal Health and Food Safety, will facilitate the panel discussion.

There is no charge to attend the breakfast, but individuals must pre-register. Visit [www.centerfordairyexcellence.org/industry-breakfast](http://www.centerfordairyexcellence.org/industry-breakfast) or call 717-346-0849.

## Flu \$\$\$ available

WASHINGTON, D.C. — The U.S. Department of Agriculture (USDA) is currently accepting applications for financial assistance to eligible dairy producers who incur milk losses due to Highly Pathogenic Avian Influenza, also known as H5N1 infection in their dairy herds. Positive test results must be confirmed through the USDA’s Animal and Plant Health Inspection Service (APHIS) National Veterinary Services Laboratories (NVSL).

For more detailed information and/or to apply, producers should contact the FSA at their local USDA Service Center.

## “Fresh heifers are comfortable with better, faster milkout.”

— Staci Sexton



Staci Sexton (left) with Virginia Magyar at WDE.

**SCHOENE KUH DAIRY, Millville, Minnesota**  
 Staci Sexton, owner, AFBF 2023 MN Young Farmer  
 Multi-year MN Holstein Progressive Breeder  
 60 reg. Holsteins and Jerseys earn quality awards  
 RHA 30,000 4.85F (Holstein) 20,000 5.5F (Jersey)  
 SCC for combined 125 cows 160-200,000

“We’ve used Udder Comfort™ over 10 years: Blue spray on fresh animals and lotion with massage for any flareups. We tried others but always came back to this product because it works,” says Staci Sexton. In 2013, she started Schoene Kuh Dairy, today milking 60 registered Holsteins and Jerseys with a genetic focus on production, health traits, and components.

Along with the Irish Ridge herd of her parents and brother, where she helps with herd work, 125 cows are milked at the Millville, Minnesota dairy farm that has been in the family over 160 years.

Schoene Kuh is German for ‘beautiful cow.’ Staci loves working with cows and genetics, earning progressive breeder and milk quality awards. Her 9th AI bull in 10 years is a homozygous polled, high cheese merit bull named King Kong.

“It’s exciting to breed, flush, and wait nine months hoping to get something great,” she says, and when it comes to first calvers “we use Udder Comfort to reduce swelling. Fresh heifers are comfortable with better, faster milkout. It’s easy to use and helps keep our SCC low.”

**UDDER COMFORT™**  
 Quality Udders Make Quality Milk

### Her Comfort is Our Passion!

Softer udders ⇨ Faster milking  
 Better quality ⇨ MORE MILK

1.888.773.7153  
 uddercomfort.com



Helping reach their potential since 1998!



For external application to the udder only, after milking, as an essential component of udder management. Always wash and dry teats thoroughly before milking.



USPS 509450 ISSN 0745-7553

Published by Farmshine LLC in Lancaster County, Pennsylvania.

1-YR. SUBSCRIPTION - \$20.00  
 INTERNATIONAL SUBSCRIPTION - \$40.00  
 Published every Friday except the week of Christmas

Dieter Krieg, Editor & Publisher  
 Melissa Johnson, Advertising Representative  
 Ashley Denlinger, Advertising Representative  
 Sue McCloskey, Secretary  
 Douglas Denlinger, Production Manager

Send subscriptions, news & advertising to:  
 FARM SHINE  
 342 E. Main St., Suite 201, Leola, Pa. 17540  
 Phone 717-656-8050 | Fax 717-656-8188  
 news@farmshine.net | ads@farmshine.net

Periodicals postage paid at Lancaster, PA and at additional mailing offices.

POSTMASTER: Send Address Corrections To:  
 FARM SHINE  
 342 E. Main St., Suite 201  
 Leola, Pa. 17540

Copyright © 2024. Printed in USA. All rights reserved. No part of this publication may be reproduced in any form without prior written permission by the publisher. Information gathered herein is from resources considered reliable. Accuracy, however, cannot be guaranteed. All printed material is intended for your information and reading enjoyment and is not meant to disrespect or harm any group or individuals. Ads appearing in this paper are not to be considered as an endorsement by Farmshine for products or services offered.

Farmshine’s staff reserves the right to refuse any and all material, including articles and advertisements that they determine do not fit the objectives of Farmshine.

# Editorial from page 1

Guidelines to reduce red meat specifically to reduce emissions?"

"Yes, I would," Harris replied, with a burst of laughter.

It's not funny.

Earlier, she had said she "enjoys a cheeseburger from time to time," but the balance to be struck is "what government can and should do around creating incentives, and then banning certain behaviors... that we will eat in a healthy way, and that we will be educated about the effect of our eating habits on our environment. We have to do a much better job at that, and the government has to do a much better job at that."

Read those words again: "creating incentives and then banning certain behaviors." In plain English, that means dangling the carrot and then showing us the stick.

Harris joins Senators like Ag Chair Stabenow, as well as Bob Casey from Pennsylvania, as card-carrying members of perennial Ag Secretary Vilsack's food and climate police.

Not only is Ag Chair Stabenow blocking the whole milk bill in her Committee, she is dragging her feet on the critical farm bill.

As President Biden's approval ratings fell, there were indications she would bring her side of the aisle to the table to negotiate a compromise to get the farm bill done this year.

Now that Biden has withdrawn from the race, and the pundits, media, and party organizers are breathless with excitement over Harris as presumptive nominee, it appears that the farm bill negotiations between the Committee-passed House version, the Republican Senate version and the Democrat Senate version have fallen apart.

House Ag Chair G.T. Thompson (R-Pa.) has called upon his colleagues to get to the table and do the work because a perfect storm is brewing in Rural America as net farm income is forecast to fall by 27% this year on top of the 19% decline last year.

Meanwhile, there is political upheaval everywhere we look. Seeing Vance picked as Trump's running mate and knowing he was among the early cosponsors of Senate Bill 1957 – The

Whole Milk for Healthy Kids Act – offers some hope.

That bill – in true bipartisan spirit – was introduced in the U.S. Senate in June 2023 by Senator Dr. Roger Marshall (R-Kan.) with prime cosponsors Peter Welch (D-Vt.), Ron Johnson (R-Wis.), Kirsten Gillibrand (D-N.Y.), Chuck Grassley (R-Iowa), John Fetterman (D-Penna.), Mike Crapo and James Risch (R-Idaho), Susan Collins (R-Maine), Angus King (I-Maine), and Cindy Hyde-Smith (R-Miss.). The bill eventually earned cosponsor-

ship from other Senators, including the influential Democrat from Minnesota, Amy Klobuchar.

Vance signed on as cosponsor on December 14, 2023, one day after the U.S. House of Representatives had passed their version of the bill by an overwhelming bipartisan majority of 330 to 99.

The Senate bill 1957 is identical to the successful House whole milk bill H.R. 1147, which was authored by Pennsylvania's own Representative GT Thompson.

GT is a man of courage, conviction, compassion, of humility and humanity. I've heard him say more than once: "God gave us two ears and only one mouth for a reason."

He is a determined man, doing the work. He included whole milk bill in the House Committee-passed farm bill. He's standing firm on his pledge to put the farm back in the farm bill. He is concerned about the financial crisis in agriculture on the horizon, and held a hearing July 23 with witnesses from agriculture and banking giving stark warnings.

Even though whole milk choice in schools seems like a minor issue in the grand scheme of things today, it is really a linchpin. If we could just get something with broad bipartisan support accomplished, this could lead to other steps on common ground.

Cows are not the climate problem. Cows are part of a carbon cycle, they don't take carbon out of the ground and put new carbon into the air.

Carbon is essential to life. It seems that those seeking full control of land, food, and people, are starting with carbon.

As the whole milk choice remains hung up in the Senate, let's pause to think about how ridiculous it is that we adults get to choose, but our growing children do not. For them, whole milk is banned at two meals a day, five days a

week, three-quarters of the year at school. Maybe the Harris ticket would like to ban food choice behaviors for adults as well.

We have Republicans and Democrats supporting whole milk choice in schools. Both parties say they care about our nation's farmers and ranchers who feed us and are the backbone of our national security.

Let's take that and run with it.

## Total packaged fluid milk sales in May continue outpacing year ago

U.S. fluid milk sales continued outpacing year ago in May, according to the USDA's Estimated Total Packaged Fluid Milk Sales Report released last Friday, July 19.

The report showed May sales were up 0.3% compared with a year ago, following the big 5.9% jump in April. In fact, fluid milk sales have been higher year-over-year (YOY) for six of the past eight months.

Year-to-date (YTD) sales continue to beat year ago, up 1.3% for the Jan-May period, and when adjusted for Leap Year, YTD 2024 sales are up 0.6% vs. 2023.

Leading the charge again is the largest volume category: conventional whole milk sales, up 1.8% YOY in May, plus organic whole milk sales, up 28% YOY in May.

Conventional whole *flavored* milk sales were down 13% from a year ago in May — a function of what fat percentage is offered, not necessarily what consumers may have selected — as the reduced fat (2%) *flavored* milk sales rose 3.5% in May. By contrast, organic whole *flavored* milk sales were up 31% YOY in May.

Total Organic fluid milk sales of all fat levels were up 6.3% in May YOY and up 7.8% (Leap Year Adjusted) for the first five months of 2024 vs. year ago. They represent 7% of the YTD total of all fluid milk sales.

The 'other fluid milk products' category continues to make double-digit percentage gains, up 45% YOY in May and up 37% (Leap Year Adjusted) YTD vs. year ago. This category represents 2.2% of total fluid milk sales. The report does not separate out the ESL products in each fat percentage; however, lactose-free milk brands are included in the 'other products' category.

### DMI / NMPF say supply demand

Fluid milk, yogurt, butter and other than American-type cheese all posted positive annual growth in domestic commercial use during the March-May 2024 period, according to the July edition of the joint DMI and NMPF market report released July 23rd. The report cites significant export growth for all types of cheese and whey protein concentrate and isolate. However, when looking at domestic and export sales of all products combined, the usage is described as "relatively flat to lower" in the March through May period.

The DMI / NMPF report observes that U.S. milk production has nearly had a year's worth of volumes charting below prior year levels, but "continued increases in average component composition of producer milk has enabled U.S. dairy farmers to supply available demand for dairy products while keeping inventories of key products relatively stable," the report stated.

Overall supply-and-demand balance in the industry has been



good enough to move dairy product and dairy farm prices and margins higher in recent months, without significantly reversing the gradual reduction trend in retail dairy product prices that has occurred over the past year, according to the report.

While dry skim milk usage is down 48% in the March-May period, this is a function of the lower production of skim milk powder (down 24.5%) and nonfat dry milk (down 12.5%). Inventories at the end of May trailed year ago by 4%. Domestic and export markets can only 'use' what is 'produced' and available in a commodity category in the first place.

### Milk futures dance to mixed music

Class III milk futures moved higher this week, especially for August through October contracts that were up 60 to 90 cents, although far off contracts were steady to lower. The Class IV futures board did a different kind of dance, up-down-up-down by precise nickels and dimes in neatly alternating 1 to 3 month increments for no net change on the 12-month average.

On Wed., July 24, Class III milk futures for the next 12 months averaged \$19.46, up 21 cents from a week ago. The 12-month Class IV average at \$20.94 is precisely unchanged.

### Dairy product markets surge higher, butter melts before firming up

The CME spot cheese market reversed course higher this week, gaining back all of last week's losses in moderate trade with blocks outpacing barrels in volume, but barrels surpassing blocks in price. Butter moved lower before gaining at midweek and nonfat dry milk took the fast-track higher.

The whey market is the big story as big declines in inventory and production of dry whey and whey protein concentrate have pushed the CME spot whey market higher weekly, with minimal product changing hands. Interestingly, the spot market continues to trade at nearly a dime premium over the slow and steady crawl of the weekly National Dairy Product Sales Report (NDPSR).

The NDPSR prices are the ones that USDA collects in mandatory processor pricing surveys to use in the Federal Milk Marketing Order end-product pricing formulas. The NDPSR whey price is the one USDA AMS plugs into the FMMO pricing formula for Class III and 'other solids.'

While spot bids for dry whey rallied a penny or more daily, zero loads changed hands the first three days this week, and the spot price was pegged at 54 cents/lb on Wed., July 24 (53-cent average for the week) — up 4 cents from the previous Wednesday.

Meanwhile, the NDPSR price for the week ending July 20th is still stuck at 45 cents/lb, which is almost a dime lower than the spot price this week and fully a nickel below the spot-price level for the prior two weeks. The spot whey price is not translating to the USDA price survey.

In the cheese spot cash market, barrels traded at a premium over blocks; while the NDPSR has been the other way around.

The CME daily spot market for 40-lb block Cheddar increased daily this week, pegged at \$1.94/lb Wed., July 24 (\$1.9150/lb average for the week). This is 8 cents higher than the previous Wednesday with 14 loads trading the first three days. The 500-lb barrel cheese price pegged at \$1.9750/lb was 6 cents higher than a week ago, with 8 loads trading the first three days.

The NDPSR for week ending July 20 pegs blocks at \$1.96/lb and barrels at \$1.95/lb.

In the Class IV product complex, butter melted off last week's gains, but then it firmed up with a 1.5-cent rally Wed., July 24 when the spot price was pegged at \$3.09/lb, down 4 cents from the previous Wednesday and 3.5 cents under the NDPSR butter price for the week ending July 20. Active daily spot trading cleared 17 loads of butter in the first three days this week.

Grade A nonfat dry milk took the fast-track higher this week, advancing more than a penny daily. By Wed., July 24, the CME spot price was pegged at \$1.2350/lb, up a whopping 7 cents from a week ago with a whopping 17 loads changing hands the first three days. The NDPSR reported nonfat dry milk powder prices at just shy of \$1.20/lb for the week ending July 20th.

### Year-to-date milk production down 1%

U.S. milk production fell 0.8% in June compared with a year ago, despite the national herd reportedly having 2000 more milk cows than a year ago, according to USDA's monthly milk report this week. The report also revised the May total lower by another 0.2% or 30 million pounds.

Year-to-date milk production for the first half of 2024 is down 0.3% compared with the first half of 2023 even with an extra day of production in 2024! When adjusted for Leap Year, first half 2024 milk production trailed year ago by 1%. It would not be surprising to see USDA come back and trim the June tally lower, later.

In the Northeast and Midatlantic Milkshed, Pennsylvania's production fell 2.2%, Vermont down 2.8%, and New York down 1.2%. In the Southeast, Florida gained 4.9% with 4000 more cows while Georgia dropped 8.1%, losing 8,000 cows, and Virginia saw a 4.3% drop in production vs. year ago. The Mideast Milkshed declined with Michigan down 0.9%, Ohio 0.6%, and Indiana 1.6%, with just a 1000-head loss in cow numbers across the three states. In the Upper Midwest and Central Plains, Iowa grew production by 1.2%, despite being hit with bird flu in June, Minnesota was down 1%, South Dakota up 8.3%, and Wisconsin up 0.9%. Western States saw production declines, except for Texas up 3.1% with 13,000 more milk cows than a year ago.

### Will we see PA milk bills moove?

The Pennsylvania State Assembly has a few dairy bills waiting to moove on through both chambers again towards the end of a two-year legislative session. We've seen this movie before, where the House votes to allow Pennsylvania whole milk produced on Pennsylvania dairy farms to be served in Pennsylvania schools, and where the House votes to allow the state-mandated Pa. Over Order Premium (OOP) to be collected and distributed to farms by the state instead of leaving it open to loopholes that strand the dollars through creative cross-border deals.

In prior years, such milk bills would move through Committee and even get passed by the House, only to be stuck in some desk drawer in the Senate. If we look back far enough in the history of milk bills in the Pennsylvania legislature, we see on other occasions a long awaited milk bill passed the Senate only to be stalled out in the House. Will this year be any different? Who knows? Election years are funny-seasons.

Earlier this month, Senators Elder Vogel and Judy Schwank, the chair and ranking member, respectively, of the Senate Ag Committee introduced legislation to allow the state to collect the state-mandated OOP and distribute it to farmers. A similar bill had been introduced in the past two legislative sessions on the House side by Rep. John Lawrence, but Vogel and Schwank were unconvinced to move it in the Senate.

This time, Vogel and Schwank are introducing the measure after many years of multiple hearings, task forces, and other such discussions of what on earth to do about the state-mandated OOP to make sure all of it — 100% — gets into the pockets of Pennsylvania dairy farmers, as intended.

The Vogel-Schwank rendition would "empower" the Pennsylvania Milk Board (formerly known as the Pennsylvania Milk Marketing Board) to administrate the process of collecting and distributing the premium with involvement of the Pa. Dept. of Revenue. The state would distribute the funds to farmers, milk handlers and dealers using a formula that includes cost of production, price received, and other measures. The current method of distribution only follows the \$1 premium for milk produced, processed, and sold in Pennsylvania, but consumers pay it in the minimum retail price set by the Pa. Milk Board for all milk, no matter where it comes from. Stay tuned.

In June, the Senate Ag Committee passed SB 1229, which would allow the Pa. Dept. of Agriculture to provide financial assistance to dairy farmers who enroll in the federal dairy margin coverage (DMC) program.

# "GAME CHANGER"




"I love dairy farming. We got on the products as our friend Jonas Martin had near 50 SCC on **Immu-Pro**. On **Immu-Pro and Stay Strong** our Holstein herd got 4.38F 3.67P and milk up 9 lbs./cow and SCC dropped near 50%. We were never this good until we got on the products."

—Delvern Martin, owner/general manager  
Ringgold Farms, MD  
SCC 90-140

**Many also use Immu-Pro & Stay Strong as their GAME CHANGER.**



**Start today - 920.650.1631**  
[www.alphageneticsinc.com](http://www.alphageneticsinc.com)





**Also BE A DAIRY HERO.**  
CALL 202-224-3121 and tell your Senators to co-sponsor and vote YES to S1957 "WHOLE MILK FOR HEALTHY KIDS ACT"

**Also call Senate Ag Chair Debbie Stabenow at 202-224-4822 and ask her to please co-sponsor & pass S1957 so children in public schools can again enjoy healthier whole milk. USA is watching you.**



**SUPPORT 97milk.com. They support you!**  
GOOD NEWS 24-7-365. 1-605-477-2279



The top three individuals in the intermediate division of the Folding Display Contest in the Creative category were Aiden Empet from Pennsylvania; Paige McKay from Washington and Aubree Topp from Ohio.



The top three individuals in the senior division of the Folding Display Contest in the Scientific category were Cait O'Sullivan and Carlee Roell from New Jersey; and Annika Donlick from New York.



The top three individuals in the senior division of the Prepared Public Speaking contest were Sara Reed from Pennsylvania; Lila Sloan from Illinois; and Elyse Dilling, Pennsylvania.

# Holstein Juniors recognized at National Convention

BRATTLEBORO, Vt. — Over 300 Junior Holstein members showcased their passion for Holstein cows and the dairy industry at the National Holstein Convention held in Salt Lake City, June 23 to 27.

"The energy at National Holstein Convention is ecstatic! Everybody is very happy to be here out in Utah at this beautiful Convention Center," said Junior Holstein Member and DJM finalist Keenan Thygesen from Tunbridge, Vermont. "Being here is a great experience overall to connect with old friends, share memories, and talk about how we can further the Holstein cow."

Results of contest follow:

**• Prepared public speaking**

Forty-eight youths participated; speech topics covered a broad range of dairy industry topics, including whole milk in schools, dairy in social media, calf recumbency, dairy policy, and more.

*Junior division (ages 9-13 as of January 1)*

1. Avery Best, Florida

2. Camden Huff, Georgia
  3. Brady McConnel, Wisconsin
- Int. division (ages 14-17 as of Jan. 1)*

1. Atley Shafer, Maryland
  2. Elsie Donlick, New York
  3. Lilly Mills, New York
- Senior division (ages 18-21 as of Jan. 1)*

1. Sara Reed, Pennsylvania
2. Lila Sloan, Illinois
3. Elyse Dilling, Pennsylvania

**• Extemporaneous speaking**

Open to Juniors in the senior division, the contest is designed to help youth develop the ability to think on their feet and broaden their knowledge of dairy industry topics. Contestants were judged on organization of material, power of expression, voice, stage presence, and response to questions.

*Senior division (ages 18-21 as of Jan. 1)*

1. Alysha Kuhn, New York
2. Chloe Breunig, Wisconsin
3. Madeline Hensel, Wisconsin

**• Folding display contest**

This year's Folding Display competition, now in its 15th year, had 38 entries. Youth are divided into three age divisions, and each division has two categories - Scientific and Creative. Following are the results for each category.

**Creative division**

*Junior division (ages 9-13 as of Jan. 1)*

1. Colton Uber, Pennsylvania
2. Brinkley Burdette, Pennsylvania
3. Seth Peiffer, Pennsylvania

*Int. division (ages 14-17 as of Jan. 1)*

1. Aiden Empet, Pennsylvania
2. Paige McKay, Washington
3. Aubree Topp, Ohio

*Senior division (ages 18-21 as of Jan. 1)*

1. Alex Empet, Pennsylvania
2. Carlee Roell, New Jersey
3. Chloe Roell, New Jersey

**Scientific division**

*Junior division*

1. Lydia Couch, Pennsylvania
2. Kyra Lamb, New York

3. Valentina Maza, New Jersey
- Intermediate division*

1. Chelsea Empet, Pennsylvania
2. Lydia Kaverman, Ohio
3. Charlotte Quick, Pennsylvania

*Senior division*

1. Cait O'Sullivan, New Jersey
2. Carlee Roell, New Jersey
3. Annika Donlick, New York

**• Digital State Scrapbook**

The Digital Scrapbook Contest gives each state the chance to tell the story of activities and events their Junior Holstein associations take part in each year.

1. Virginia, 2. Missouri, 3. Ohio, 4. California, 5. New England

**• State banner**

The state banner competition allows states to creatively showcase their associations, displayed throughout the week at the Convention. Judges assess the banners based on promotion of state, Holstein related, at-

turn to page 14

## THANK YOU & CONGRATULATIONS!

### SCATTERED ACRES FARMS • REINHOLDS, PA








MagStream Meter

SCATTERED ACRES FARMS

Recently installed a double 18-dairy lane stall retrofit with BouMatic MagStream meters & SmartLite detach system






SmartLite Detach System  
Detach Smart, Improve Performance



FISHER & THOMPSON  
INCORPORATED

/fisherthompsoninc

www.FisherThompson.com

ASK US HOW BOUMATIC MILKING TECHNOLOGIES CAN ENHANCE YOUR OPERATION!

Auburn, NY .....	315-252-9270	Rocky Mount, VA .....	540-489-5800
Batavia, NY .....	315-252-9270	Belleville, PA .....	717-935-7422
Clymer, NY .....	716-450-9967	Chambersburg, PA .....	717-352-7606
Conewango Valley, NY .....	716-358-9152	Roaring Spring, PA .....	814-224-0070
Mechanicville, NY .....	518-652-2383	Somerset, PA .....	814-444-8502
Harrisonburg, VA .....	540-867-3251	Troy, PA .....	570-297-2012

MAIN OFFICE

LEOLA, PA

717-656-3307

## Dairyman's Datebook

**JULY 26**, 7 p.m. Berks County Holstein Club summer picnic at BAD Farm, 86 Wieder Road, Kempton Pa.

**JULY 27**, 8:30 a.m. Central Pennsylvania Championship Holstein Show, Grange Fairgrounds, Centre Hall.

**AUGUST 1**, 9 a.m. Penn State Lancaster County Extension Farming for Success Day at the Penn State Research Farm, 1446 Auction Road Manheim, Pa. Pre-registration is \$10.00 at extension.psu.edu/farming-for-success. Walk-in's \$15.

**AUGUST 1**, 6:30 p.m. Franklin County Holstein Association picnic at the farm of Nevin and Raedella Wenger, 2249 Newcomer Road, Chambersburg, Pa.

**AUGUST 3**, 9 a.m. Virginia State dairy shows, Rockingham County Fairgrounds, Dayton.

**AUGUST 6**, 9:30 a.m. Southeast Pennsylvania Championship Holstein Show, Lebanon Fairgrounds, Lebanon.

**AUGUST 8**, 6 p.m. Lancaster County Holstein Field Night, at Jonathan Glick's farm, 1148 East Oregon Road, Lititz, Pa.

**AUGUST 13-15**, Ag Progress Days at the Russell E. Larson Agri-

cultural Research Center at Rock Springs, 9 miles southwest of State College on Route 45.

**AUGUST 14**, 7-9 a.m. Animal Agriculture Industry Breakfast on HPAI and Why Biosecurity Is Essential, Special Events Building at Ag Progress Days.

**AUGUST 16 - 24**, The 150th Centre County Grange Fair, Centre Hall, Pa.

**AUGUST 21**, 9:30 a.m. New Jersey State Holstein Show, Sussex County Fairgrounds, Augusta.

**SEPTEMBER 11**, 8 a.m. Dairy Financial and Risk Management Conference, titled "Future-Proofing Our Farms." Location: Sheraton Harrisburg Hershey Hotel, 4650 Lindle Rd, Harrisburg, Pa.

**SEPTEMBER 27-29**, Virginia State Fair dairy shows at the Doswell Fairgrounds, 13191 Dawn Blvd., Doswell, Caroline County.

**OCTOBER 1-4**, World Dairy Exposition, Alliant Energy Center, Madison, Wis.

**OCTOBER 17-20**, Pennsylvania State Grange Session, Pittsburgh Marriott North, 100 Cranberry Drive, Cranberry Township, Pa.

## Advertiser's Index

AAA Supply .....14	King Bacterial Digestant.....22
Agri-King.....24	King's AgriSeeds.....8
Agri-Trac.....9	Lancaster DHIA.....8
Alpha Genetics (Immu-Pro)....4	Martin's Roofing.....8
Bargain Page.....11	Meyer, Dick Company.....6
Beiler Industries.....22	Morrissey Insurance.....23
Beitzel Spraying.....6	Natural by Nature.....7
Brubaker's Quality Sales.....20	Nelson & Sons Concrete Grv...9
Brubaker, Rufus Refrigeration .6	New Holland Sales Stables...20
Building Directory.....9	Nicholas Meat.....10
Esch Hay Equipment.....7	Pa. Holstein Association.....22
Farm Credit East.....15	Patz.....10
Fight Bac.....11	Power Systems Electric.....16
Fisher & Thompson.....5	Precast Systems.....21
Fisher's Quality Dairy Sales .21	Rissler Conveyors.....22
GEA North America.....16	Shady Lane Curtains.....3
Gehm, L.R.....18	Sollenberger Silos.....21
Hoof-Zink.....18	Sturdy Built Manufacturing.....7
Horst Grain Roasting.....21	Triple M Farms.....22
Hosking Sales.....21	Udder Comfort.....2
JBS.....17	Weaver's Toasted Grains.....9
JRS Ag Assemblies.....17	Zimmermans Glass Strg...21,22
Keystone Concrete Products .17	

## Auction Guide

**JULY 31**, 10:30 a.m. Dairy Cow & Heifer Sale, New Holland Sales Stables, New Holland, Pa. Sale managed by New Holland Sales Stables.

**AUG. 1**, 7 p.m. Special Dairy Sale, Fisher's Quality Dairy Sale, Ronks, Pa. Sale managed by Fisher's Quality Dairy Sales.

**AUG. 2**, 10:30 a.m. Seldomrest Dairy Complete Retirement Dispersal, Pine Bush, N.Y. Sale managed by Hosking Sales.

**AUG. 2**, 6 p.m. Special Feeder Cattle Sale, New Holland Sales Stables, New Holland, Pa. Sale managed by New Holland Sales Stables.

**AUG. 6**, Bright Futures 10 Elite Embryo+ Auction, Live Online. Sale co-managed by MD-Hillbrook and Borderview Genetics.

**AUG. 9**, 9 a.m. King Farm Dispersal, Millersburg, Pa. Sale managed by Tim Weaver Auction Service.

**AUG. 22**, 7:15 p.m. Special Dairy Cow & Heifer Sale, Brubaker's Quality Dairy Sales, Brubaker's Quality Dairy Sales, Pa. Sale managed by Brubaker's Quality Dairy Sales.

**AUG. 23**, 10 a.m. Kauffman Herd Dispersal, Spring Glen, Pa. Sale managed by Tim Weaver Auction Service.

**AUG. 23**, 7 p.m. King Family Holstein Herd Dispersal, Ronks, Pa. Sale managed by Double E Auction Service.

**OCT. 26**, Nittany Lion Fall Classic Sale, University Park, Pa. Sale managed by Pa. Holstein Association.

## Jan Harding scholarship must be applied for by Aug. 9

HARRISBURG, Pa. — A new award program is now open to recognize an individual between the ages of 18 and 30 who has demonstrated exceptional service to and promotion of Pennsylvania's dairy industry. Nominations for the Jan Harding Ruslavage Memorial Service & Promotion Award must be submitted by August 9th.

The Jan Harding Ruslavage Memorial Service & Promotion Award has been established to honor the memory and distinguished service of Janet Harding Ruslavage to Pennsylvania's dairy industry. The award will provide



Jan Harding Ruslavage

recognition and financial support to an outstanding young individual who has demonstrated a commitment to dairy service and promotion through the contributions they are making to enrich the future of Pennsylvania's dairy industry.

Nominations may be submitted online at [www.centerfordairyexcellence.org/janet-harding-ruslavage-award](http://www.centerfordairyexcellence.org/janet-harding-ruslavage-award) and are due by August 9th. The winning individual will receive a \$3000 cash award and recognition at the annual Pennsylvania Dairy Princess State Pageant in September.

## Consignments invited for Lebanon Co. Holstein sale

LEBANON, Pa. — The Lebanon County Holstein Association is looking for quality Registered Holstein consignments for their 46th annual Lebanon County Showcase Sale to be held Friday evening, August 23, at the Zuck farm, Lebanon, Pa. Call or text Daniel Brandt at 717-821-1238 or the sale co-chairman, Derek Good, 717-679-8112 or Tyler Zimmerman, 717-381-8259.

August 9 is our  
*Ag Progress Days*  
special issue!

Contact your advertising representative to be included in this special issue!

Call: (717) 656-8050 • FAX: (717) 656-8188  
email: [ads@farmshine.net](mailto:ads@farmshine.net) • [www.farmshine.net](http://www.farmshine.net)

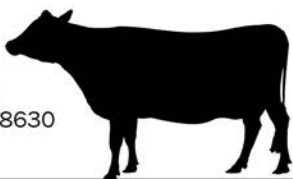
YOUR AD MUST BE RECEIVED BEFORE 10:00 A.M. ON TUESDAY, AUGUST 6.



**SELL YOUR CATTLE!**  
**PURCHASING CULL COWS**

Same-Day Payment  
NO Fees • NO Commission

For more information:  
Direct: (970) 506-8215  
Duff George: (717) 594-8630



Livestock Buying Stations are OPEN:

7195 Molly Pitcher Hwy  
Greencastle, PA 17225  
Monday & Wednesday  
9 a.m. - 2:30 p.m.

503 School Rd  
Denver, PA 17517  
Tuesday & Thursday  
9 a.m. - 2:30 p.m.

Contact Doug Musser: (267) 371-9824

**(JBS)** Learn more about our brands at [jbsfoodsgroup.com](http://jbsfoodsgroup.com)

249 Allentown Rd | Souderton, Pennsylvania 18964 USA

**DICK MEYER CO. CONCRETE GROOVING**

- Improve Livestock Traction in New & Existing Barns
- Better Drainage for Dry & Healthy Hooves

**CUSTOM CONCRETE GROOVING & SLOT CUTTING FOR ALLEY SCRAPERS**

1-800-228-5471 [www.DMsafetygrooving.com](http://www.DMsafetygrooving.com)

Rufus  
**Brubaker**  
Refrigeration LLC

Toll Free 1-866-665-3525

**New & Used Quality Milk Tanks**

400 Gallon      1000 Gallon  
700 Gallon      1500 Gallon  
800 Gallon

**Walk-In Coolers and Freezers, Panels and Doors Available.**

**WHITE WASHING with ADVANTAGE FARM WHITE**

- Dries White • No Wet Floor
- Is Compatible With Disinfectant And Fly Sprays
- Does Not Rub Off Easily
- Washes Off Windows And Pipelines Easily

**BARN CLEANING SERVICE AVAILABLE WITH COMPRESSED AIR**

To have your barn cleaned with air it will clean off dust, cobwebs and lots of the old lime. This will keep your barn looking cleaner and whiter longer.

**CALL US ABOUT ON THE FARM FLY CONTROL**

Serving Southeastern Pa. And More

**Beitzel Spraying**

Witmer, PA 17585 • 7:00 A.M. to 5:00 P.M.  
717-392-7227 or Toll Free 1-800-727-7228

**CERTIFIED COMMERCIAL APPLICATORS LICENSED 45 YEARS EXPERIENCE INSURED**

*Radio Dispatched Trucks*  
**Barn Spraying Is Our Business Not A Sideline**  
**Spraying Since 1961**

## Heifers wanted for KWYB Sale

STATE COLLEGE, Pa. — The search for Holstein heifers is back on. The cattle market continues to be strong because there's brisk demand for bred and open recipient heifers.

The next "Know What You Buy" Heifer Sale is set for Friday, September 6, at 10 a.m. at the Pennsylvania Holstein Farm, 1806 River Road, Middletown, Pa.

"Our last sale on July 12th yielded fantastic results with the entire sale averaging right at \$2100. Increased demand makes for improved prices. If you have extra heifers, now is the time to sell!" declared PHA Executive Director David Lentz.

The sale is accepting heifers ranging from close springers due in late September (in-

stant milk) to 5-month-old calves. The market favors short bred and ready to breed heifers.

It is called the "Know What You Buy" Heifer Sale because at least 95% of the heifers will have Sire ID, if not Registered! There is a bonus if heifers are bred to sexed semen. Also, there will be a payback if your heifers are tested negative for Leucosis. A2A2 heifers are in demand as well. Full pedigrees are sought after too.

If you are a dairy producer or heifer raiser from the Mid-Atlantic Region or other parts of the United States and have heifers to sell, then please contact PHA today at [director@paholsteins.com](mailto:director@paholsteins.com) or 717-329-9202.

## Ben Styer of Wisconsin awarded George Miller Scholarship

BRATTLEBORO, Vt. — Benjamin Styer of Menominee, Wisconsin was awarded the George Miller Memorial Scholarship during the Junior Awards Breakfast at the National Holstein Convention in Salt Lake City, Utah. The scholarship was established in 2023 to honor George Miller and his significant contributions to the dairy and A.I. industries.

Benjamin is pursuing a bachelor's degree in animal science at the University of Minnesota. He grew up on his family's Al-falawn Farms, active in showing dairy cattle and dairy judging. He is still pursuing these passions and was a member of the first-place team overall and first-place individual overall at the 2023 National Intercollegiate Dairy Cattle Judging Contest.

Benjamin hopes to pursue a career in dairy genetics, before later returning home to his family's dairy farm to develop the herd's genetic programs.

"We were thoroughly impressed with all the applicants for the George Miller Scholarship," said Jeff Ziegler, vice president of dairy



George Miller

cattle breeding at Select Sires Inc. "We are assured our industry is in great hands with future leaders like Benjamin."

The George Miller Scholarship fund is hosted by the Holstein Foundation, awarded by Holstein Association USA, and supported by Select Sires Inc.

George Miller made significant contributions to the dairy and A.I. industries throughout his lifetime. He exhibited an unmatched passion for good cows and the breeders he worked beside. He grew up helping on his uncle's dairy farm, the birthplace of 7HO58 Round Oak Rag Apple Elevation (EX-96-GM). George Miller was a pioneer for genetic advancement in the dairy industry and played a major role in the breeding decisions that produced Elevation.

George Miller attended Virginia Polytechnic Institute, earning a degree in animal husbandry and a master's degree in dairy science. He spent most of his career at Select Sires joining the staff in 1973 where he worked as the cooperative's marketing manager before retiring in 1991.

"GT"  
Glenn  
Thompson  
Congress



Friends of Glenn Thompson

**Cordially Invites you to a reception**

with

**CONGRESSMAN GLENN 'GT' THOMPSON**

Enjoy a traditional low country boil on the covered bridge. Congressman GT will provide an update from Washington D.C., and our statewide candidates will also be available. This is our 15th annual event where we honor the fish and celebrate the agriculture industry.

**Tuesday, August 13, 2024 5:00 - 8:00 PM**

**The Cottage** 5627 Covered Bridge Lane  
Spruce Creek, PA 16683

**\$100/person**

Enjoy live music and a sampling of cigars on the porch after dinner

**RSVP** by Friday, August 9, 2024 by e-mailing: [marcie@gthompson.com](mailto:marcie@gthompson.com) or texting: 814-321-3689

Contributions to Friends of Glenn Thompson are not deductible as charitable contributions for Federal income tax purposes. Federal law requires Friends of Glenn Thompson to use our best efforts to collect and report the name, address, occupation, and employer of any individual who contributes more than \$200 in an election cycle. Not printed at government expense.

Paid for by Friends of Glenn Thompson

## Natural By Nature is looking to sign up Organic Dairy Producers.



- Family-owned operation that has been in business for 30 years.
- Have our own processing plant where we bottle our organic dairy products.
- Offer great quality premiums and an optional 100% grass-fed premium.
- No hauling, labs, or marketing fees, no equity deductions, or quotas.
- We are looking to expand our producer group in Lancaster, Berks, Perry, and Dauphin County.

**For additional information, please reach out to Amy Simms at 484-643-6714.**

Do you have heavy crops such as Cereal Rye, Triticale, 1st cutting Alfalfa?

## HAY TEDDERS

Do you need a Tedder that can handle these crops?

Contact Esch Hay Equipment for a Tedder that is built to handle these crops!

**New tedders have a:**

- One year warranty • Hyd. fold and tilt
- Lifetime warranty on tine arms
- New tine design with 4x less breakage
- Four sizes to fit your needs
- 2-star 9 ft. wide
- 4-star 18 ft. and 22 ft. wide
- 6-star 32 ft. wide



Call us for a dealer near you or stop by our location at:

**EHE**

**Esch Hay Equipment LLC**  
3230 E. Gordon Rd., Gordonville, PA 17529  
717-768-0600

**Sturdy Built**  
Manufacturing, LLC

- Double Roll-Up
- Center Roll-Up
- Drop & Roll
- Single Roll-Up
- Parlor Curtains
- Curtains for Calf Nurseries



## Agricultural Curtain Systems



**In-House Fabrication**



**Rapid Production!**  
(Hardware in Stock)



**Convenient to Install**  
or Ask about a Local Installer

**Benefit from Fresh Air Year-Round!**

Call 866-543-5116

[sales@sturdybuiltmfg.net](mailto:sales@sturdybuiltmfg.net)  
260 S. Muddy Creek Rd. Denver, PA 17517



Request a FREE Ventilation Equipment Guide!

# Lancaster DHIA

# New England, New Jersey, New York

JUNE 2024

## NEW HAMPSHIRE

### Grafton County

PATCH FAMILY	93 HO	24949	1113	803
MINOT, WILLIAM & DIANNE	13 HO	22489	786	703
MINOT, WILLIAM & DIANNE	16 AY	17813	709	610

#### HERDS WITH A RHA SCC LESS THAN 200,000

MINOT, WILLIAM & DIANNE	AY	73	16
PATCH FAMILY	HO	157	93

### Merrimack, Belknap Counties

CATE, JONATHAN	51 XX	18239	859	655
----------------	-------	-------	-----	-----

### Sullivan County

GARY LECLAIR	298 HO	28278	1227	927
PUTNAM FARMS, INC.	431 HO	26524	1152	857
MACGLAFLIN FARM LLC.	388 HO	25485	1241	806
PUTNAM FARMS, INC.	60 XX	21286	1073	768
LUTHER, JOHN W.	29 HO	22268	840	725
MACGLAFLIN FARM LLC.	65 XX	20742	1157	721
MACGLAFLIN FARM LLC.	73 JE	18850	1071	682
CLARK, GREGORY & MARCIA	37 HO	20579	809	649
CLARK, GREGORY & MARCIA	38 MS	18838	691	585
LUTHER, JOHN W.	15 JE	15142	750	561

#### HERDS WITH A RHA SCC LESS THAN 200,000

CLARK, GREGORY & MARCIA	HO	68	37
PUTNAM FARMS, INC.	XX	101	60
LUTHER, JOHN W.	HO	101	29
MACGLAFLIN FARM LLC.	JE	165	73
MACGLAFLIN FARM LLC.	XX	168	65
PUTNAM FARMS, INC.	HO	170	431
MACGLAFLIN FARM LLC.	HO	172	388
CLARK, GREGORY & MARCIA	MS	181	38
GARY LECLAIR	HO	197	298

## VERMONT

### Addison County

DEGRAAF, HAROLD & ANJE	10 HO	30903	1249	980
VORSTVELD FARM	1506 HO	28572	1243	961
DEGRAAF, HAROLD & ANJE	169 HO	27174	1119	881
TUDHOPE, MILES & CHERYL	64 HO	26069	1145	867
CORREIA, ANTHONY & BARB	404 HO	25377	1098	865
ANDY NOLAN	317 HO	24676	1078	828
BRISSON, MARC & NORRIS	1083 XX	25297	1091	827
TUDHOPE, MILES & CHERYL	60 BS	22403	1014	788
FIFIELD, JEFF	131 HO	23880	982	767
TREADWAY, BRIAN	208 HO	24274	999	761
TACONIC END FARM	27 JE	14155	652	505

#### HERDS WITH A RHA SCC LESS THAN 200,000

TUDHOPE, MILES & CHERYL	BS	78	60
TUDHOPE, MILES & CHERYL	HO	91	64
CORREIA, ANTHONY & BARBARA	HO	108	404
DEGRAAF, HAROLD & ANJE	HO	127	169
PHILLIPS, DANIEL T.	XX	140	41
ANDY NOLAN	HO	142	317
TREADWAY, BRIAN	HO	145	208
BRISSON, MARC & NORRIS	XX	172	1083
VORSTVELD FARM	HO	175	1506

### Caledonia County

WAYSIDE MEADOW FARM	387 HO	29805	1279	1022
DON-SIM FARM	118 HO	27230	1103	890
FREMONT & ETHAN NELSON	231 HO	24586	1053	787
JAMES W. SEYMOUR	77 HO	22479	1024	743
LUCKY HILL FARM	179 JE	18843	1020	739
LAGGIS BROS.	518 JE	17856	935	651
FREMONT & ETHAN NELSON	29 XX	18634	850	639
BRIAN NICHOLS	105 XX	17408	834	637
WILLSON, DOROTHY & ANGE	85 XX	16970	825	629

#### HERDS WITH A RHA SCC LESS THAN 200,000

FREMONT & ETHAN NELSON	XX	77	29
JAMES W. SEYMOUR	HO	117	77
WAYSIDE MEADOW FARM LLC.	HO	117	387
LUCKY HILL FARM	JE	127	179
DON-SIM FARM	HO	132	118
FREMONT & ETHAN NELSON	HO	133	231
BRIAN NICHOLS	XX	135	105
BEAN, ERIC	JE	169	40
LAGGIS BROS.	JE	186	518
WILLSON, DOROTHY & ANGELA	XX	198	85

### Chittenden County

CREAM	65 HO	27755	1157	887
TAFT, BRUCE & MARY	315 JE	18698	1056	718
SHELburne FARMS	123 BS	17533	756	593

#### HERDS WITH A RHA SCC LESS THAN 200,000

SHELburne FARMS	BS	109	123
-----------------	----	-----	-----

### Essex County

ROUTHIER & SONS, INC.	328 HO	25258	1099	827
RUSO, STEPHEN & CARLA	17 HO	21032	908	687

#### HERDS WITH A RHA SCC LESS THAN 200,000

ROUTHIER & SONS, INC.	HO	97	328
RUSO, STEPHEN & CARLA	HO	106	17

### Franklin County

HOWRIGAN HOME FARM	273 HO	30357	1156	974
HOWRIGAN, H.J. & A. & LAW	374 HO	28264	1136	924
HOWRIGAN H-9 DAIRY	331 HO	28130	1107	906
HOWRIGAN, HAROLD J. & SO	352 HO	25298	1055	841
MIKE BENJAMIN	538 HO	26305	1098	839
MCGARRY DAIRY LLC.	122 HO	25311	1063	820
DEPATIE, JAMES & JESSICA	364 HO	24865	951	778
BALLARD ACRES	241 HO	23802	1064	768
CARPSDALE FARMS LTD.	79 HO	22583	915	731
WRIGHT FARM	187 HO	21715	966	731
PAUL-LIN DAIRY LLC.	25 JE	15597	739	577
RANDY & AMY FERRIS	69 JE	16464	772	577

#### HERDS WITH A RHA SCC LESS THAN 200,000

MIKE BENJAMIN	HO	89	538
CARPSDALE FARMS LTD.	HO	97	79
HOWRIGAN, HAROLD J. & SONS	HO	107	352
PAUL-LIN DAIRY LLC.	JE	113	25
BALLARD ACRES	HO	120	241
MCGARRY DAIRY LLC.	HO	126	122
RANDY & AMY FERRIS	JE	130	69
HOWRIGAN, H.J. & A. & LAWRENCE	HO	135	374
HOWRIGAN HOME FARM	HO	135	273
DEPATIE, JAMES & JESSICA	HO	190	364

### Grand Isle County

J. & M. LADD FAMILIES FARM	72 XX	19103	703	579
----------------------------	-------	-------	-----	-----

#### HERDS WITH A RHA SCC LESS THAN 200,000

J. & M. LADD FAMILIES FARM	XX	117	72
----------------------------	----	-----	----

### Lamoille County

KEEWAYDIN FARM	97 JE	17792	934	682
MORRILL, ARTHUR & LARRY	32 HO	20688	932	677

#### HERDS WITH A RHA SCC LESS THAN 200,000

MORRILL, ARTHUR & LARRY	HO	49	32
KEEWAYDIN FARM	JE	83	97

### Orange County

GLADSTONE, WALTER & MA	2566 HO	32374	1277	1080
GLADSTONE, WALTER & MA	52 XX	23479	1271	923
HARKDALE FARM, INC.	63 HO	25379	1106	840
WHITE, ELIJAH & MARY	119 HO	22666	1016	757
ADAM BEAULIEU	60 HO	22647	932	728
HARKDALE FARM, INC.	121 JE	17576	977	678
ALLENVILLE FARM	81 HO	22000	863	674
WHITE ROCK FARM	139 JE	18123	952	661
SILLOWAY FARMS	65 HO	20739	843	659
ROBERT J. HOWE	27 HO	21414	831	645
WRIGHT, ANDREW	49 XX	15943	714	558
LEIBOLD, KYLE	32 JE	15530	693	533
ROBERT J. HOWE	16 JE	14692	699	519

#### HERDS WITH A RHA SCC LESS THAN 200,000

GLADSTONE, WALTER & MARGARE	HO	99	2566
GLADSTONE, WALTER & MARGARE	XX	100	52
SILLOWAY FARMS	HO	111	65
LEIBOLD, KYLE	JE	112	32
HARKDALE FARM, INC.	JE	113	121
OUGHTA-BE-FARM LLP.	XX	116	58
ALLENVILLE FARM	HO	123	81
CONANT, DEAN & TERRI	AY	144	42
WHITE, ELIJAH & MARY	HO	145	119
WRIGHT, ANDREW	XX	149	49
HOYT, AMBER & SCOTT	AY	152	42
WHITE ROCK FARM	JE	157	139
HARKDALE FARM, INC.	HO	183	63
HOYT, AMBER & SCOTT	JE	183	17
ROBERT J. HOWE	HO	195	27

### Orleans County

ANDY & SARAH BIRCH	40 HO	27323	1197	912
NADEAU, AARON & CHANT	152 HO	24727	1051	778
BROE, JOHN & DEANNA	22 XX	23410	975	751
ANDY & SARAH BIRCH	11 XX	20639	985	719
JOSH POULIN	401 JE	19044	992	712
ANDERSONVILLE FARM LLC.	224 HO	21215	899	700
BROE, JOHN & DEANNA	65 XX	19959	911	692
LATRAVERSE, SEBASTIEN	55 HO	20562	835	646
PADDLEBRIDGE HOLSTEINS	57 HO	20976	812	636
LISAI, PAUL	59 XX	19508	950	615

RANDALL FAMILY FARM	118 HO	19283	773	609
PATENAUDE, KATE BRACE, DU	195 XX	18382	702	574
GUILLETTE, MARCY	26 HO	17156	734	539

#### HERDS WITH A RHA SCC LESS THAN 200,000

BROE, JOHN & DEANNA	XX	73	22
LISAI, PAUL	XX	74	59
ANDREWS, ANDY	HO	102	121
ANDY & SARAH BIRCH	HO	118	40
LATRAVERSE, SEBASTIEN	HO	120	55
PATENAUDE, KATE BRACE, DUST	XX	121	195
ANDERSONVILLE FARM LLC.	HO	135	224
BROE, JOHN & DEANNA	XX	137	65
PADDLEBRIDGE HOLSTEINS	HO	144	57
JOSH POULIN	JE	163	401
NADEAU, AARON & CHANTALE	HO	176	152
GUILLETTE, MARCY	XX	184	79
RANDALL FAMILY FARM	HO	186	118
DEMAINE, DAN	XX	189	43

### Rutland County

WOOD LAWN FARMS, INC.	128 HO	25999	1143	827
MEDALLION JERSEY LLC.	103 JE	17837	920	688
BARTHOLOMEW BROS. HD.	128 XX	15380	669	508

#### HERDS WITH A RHA SCC LESS THAN 200,000

MEDALLION JERSEY LLC.	JE	126	103
WOOD LAWN FARMS, INC.	HO	144	128

### Washington County

FAIRMONT FARM	1640 HO	29129	1253	971
MOLLY BROOK FARM LLC.	73 JE	15085	724	563

#### HERDS WITH A RHA SCC LESS THAN 200,000

MOLLY BROOK FARM LLC.	JE	122	73
FAIRMONT FARM	HO	154	1640
VONTRAPP FARMSTEAD	XX	172	56

### Windham County

WESTMINSTER FARM	807 HO	28687	1221	937
MARK, SUE, SAM, KELTSEY	31 HO	25896	1086	846
VERN-MONT FARM LLC.	569 HO	25520	1121	810
MILLER, PETER	270 HO	25574	1031	777
CLARK FARM LLC.	98 HO	21484	951	692
MARK, SUE, SAM, KELTSEY	24 JE	16953	915	638
HAMILTON, JAKE	44 HO	19490	836	629
MALCOLM SUMNER	40 JE	14556	766	511
THE PUTNEY SCHOOL	34 XX	15770	686	505
LILAC RIDGE FARM	36 HO	16244	675	504

#### HERDS WITH A RHA SCC LESS THAN 200,000

MILLER, PETER	HO	119	270
WESTMINSTER FARM	HO	127	807
THE CORSE FARM	XX	130	53
HAMILTON, JAKE	HO	161	44
VERN-MONT FARM LLC.	HO	170	569
MARK, SUE, SAM, KELTSEY RUSHTO	HO	175	31
THE PUTNEY SCHOOL	XX	181	34

### Windsor County

DOLLOFF, MICHAEL & HEIDI	71 HO	28657	1237	918
ROBETH HOLSTEINS LLC.	96 HO	23942	1030	780
LEMAR FARM	110 HO	24351	979	780
RICHARDSON FAMILY FARM	56 JE	17264	969	676
JEFFREY & DAVID TOWN	210 HO	18099	730	575
SPRING BROOK FARM	49 JE	14735	688	522

#### HERDS WITH A RHA SCC LESS THAN 200,000

RICHARDSON FAMILY FARM	JE	47	56
BILLINGS FARM MUSEUM	JE	119	45
DOLLOFF, MICHAEL & HEIDI	HO	124	71
ROBETH HOLSTEINS LLC.	HO	159	96
SPRING BROOK FARM	JE	160	49

## MASSACHUSETTS

### Franklin County

CLESSONS DAIRY	53 HO	27204	1117	850
DAR-RIDGE FARM	34 HO	24285	1045	789
GUNN, STEVE	51 HO	23129	954	756
PURINGTON, ROBERT	34 HO	22389	942	752
HUNT FARM				



# NYFB scholarship winners announced; many are 'dairy'

ALBANY, N.Y. — Two New York high school seniors have received the distinct honor of being named statewide recipients of the 2024 New York Farm Bureau Agricultural Youth Scholarship.

• **Lilly Mills** from Canastota was the first-place state winner. She received a \$3000 scholarship from NYFB along with \$250 for being the District 5 winner. She is a member of the Madison County Farm Bureau and a senior at Laurel Springs Academy. She plans to attend Cornell University to major in animal science with a goal of becoming an animal nutritionist.

She has experience caring for Holstein calves at her maternal grandparents' dairy farm and also raising Suffolk sheep on her paternal grandparents' livestock farm. She was an intern at Northeast Agri-Solutions Force where she has learned how to effectively communicate with dairy and beef producers about products that enhance animal health.

She is an active member of the New York State Junior Holstein Association, Madison County Junior Holstein Association, United Junior Suffolk Sheep Association, and her local 4-H club. As the 2024 Madison County Dairy Advocate, she has organized many activities that share with the public the positive impact of dairy farming on the environment, animal welfare and the importance of dairy products for human health. Lilly is active in school activities such as the National Honor Society and is an accomplished figure skater and the junior coach for the Cortland Figure Skating Club.

• **Cameron Stanton** from Orient earned second place, receiving a \$2000 scholarship from NYFB along with \$250 for being the District 11 winner. She is a member of Long Island Farm Bureau and a senior at Greenport High School. She plans to attend Tufts University to major in applied environmental studies and food systems with a goal of using this knowledge to not only secure the future of her family's farm, but also protect the world's food sources for the future.

Cameron's family's farm, Latham Farms, was established in 1809 and currently produces fruits and vegetables. She works at the farmstand where she enjoys interacting with customers and sharing her knowledge on the products that they sell. Also, she is very involved in the growing and harvesting of the farm's flowers, including arranging the bouquets for sale. Cameron is active at her local food pantry, and she also started an after-school club called the Green Team which promotes reducing the use of single-use plastics at school and encouraging the use of reusable containers. She has many accomplishments on the varsity track and field team, was captain of the varsity soccer team, president of the Acapella Club, and editor of her high school newspaper.

Each district winner receives a \$250 scholarship. The district winners were:

- District 1: Kelly Niefergold of Lawtons is a member of Cat-

araugus County Farm Bureau. She plans to attend SUNY Morrisville and pursue a bachelor of technology degree in dairy management with the goal of bringing that knowledge back to her family's dairy farm.

• District 2: Harley Wolfanger of Silver Springs is a member of Wyoming County Farm Bureau. She plans to attend Cornell University and major in agricultural science with the goal of becoming a veterinarian.

• District 3: Blanche Wolf, from Lyons, is a member of Wayne County Farm Bureau who plans to attend SUNY Morrisville or SUNY Cobleskill to study agricultural business and finance. Her goal is having a career related to agriculture.

• District 4: Lauren Ross of Woodhull is a member of Steuben County Farm Bureau. She plans to attend Delaware Valley University to major in dairy science to achieve her goal of having a career in the dairy industry.

• District 6: Kirsten Widrick of Chaumont is a member of Jefferson County Farm Bureau with plans to attend Cornell University or SUNY Cobleskill to study dairy communications

with the goal of having a career in dairy industry relations.

• District 7: Keller LaClair of Ellenburg Center is a member of Clinton County Farm Bureau. He plans to attend SUNY Cobleskill to study plant science, then Cornell University for a master's degree in agronomy with the goal of starting a farm.

• District 8: Caroline Kelly from Greenwich plans to attend the University of Rochester to study cell and developmental biology with the goal of becoming a large animal veterinarian and starting her own veterinary clinic. She is a member of Washington County Farm Bureau.

• District 9: Kealy Schilde of Cobleskill plans to attend Cornell University to study food science with the goal of having a career in the food industry. She is a member of Schoharie County Farm Bureau.

• District 10: Alyssa Hoag of Hopewell Junction is a member of Dutchess County Farm Bureau. She plans to attend the University of Massachusetts, Amherst, to study sustainable food and farming with the goal of having a career related to agriculture.



**Limited Time Only for 10-15% July Discounts Call for details.**

**The #1 Industry Leader in Barn Floor Traction**

• Increase Milk Production • Increase Heat Detection • Reduce Hoof & Leg Injuries • Reduce Cull Rates

"Agri-Trac works so good after they milled our floors our milk count went up 2lbs per day without changing anything else! You can see the confidence our cows have now when walking and running. No more down cows with grooving! Thank you AGRI-TRAC!"  
Ron Deboover  
Vince Deboover Farms

**Over 30 Years**  
Providing Permanent Traction for farmers that lasts decades!  
717-682-8557 • 877-966-3546  
www.agriltraction.com

"Right after my barn floors were milled we had real Traction for the first time since we started milking cows. I realized a 5lb per cow increase right off. My cows are completely different. Thank you AGRI-TRAC!"  
Derrick Nop  
Montgomery, NY

"AGRI-TRAC Traction Milling lasts and it won't wear! It works! I believe in it! No more slippery floors! No more grooving every few years! AGRI-TRAC lasts far longer than grooving. No more lame or down cows!"  
Jim Akam, Concord Valley Farms  
Spartansburg, PA

## Directory of Building Contractors

for new and renovated dairy facilities and other farm buildings

**NELSON & SONS**  
**CONCRETE GROOVING**  
FULL SURFACE & WIDE GROOVING  
Serving PA, NY & Surrounding States

PA: 610-589-1030  
NY: 607-351-9690

Save Cows, Save Your Profit Margins  
www.NelsonandSonsConcreteGrooving.com

**RYAN SERVICES, INC.**  
Building Relationships  
**Joseph M. Ryan**  
3179 Quaker Valley Road  
New Paris, PA 15554  
info@ryanservicesinc.com  
Cell: 814.285.6129 Office/Fax: 814.839.4826

**DAIRY HOUSING**  
CONSTRUCTION & REMODELING

Free Stall Barns • Tie Stall Barns  
Heifer Barns • Calf Barns • Robotics  
Special Needs • Manure Handling

Quality & Value in Construction

(800) 845-3374 **FARMER BOY** FarmerBoyAg.com  
Parts You Need. Brands You Know. Prices You Can Afford.

Specializing in construction & renovation of agricultural buildings

Dairy Facilities • Pole Barns • Free Stall Barns  
Concrete Work • Reroofing • Horse Barns

**WHITE HORSE**  
**CONSTRUCTION**  
1-888-385-2360 • 1-610-593-5559

**E&F Ag Systems**  
Ag Construction & Equipment

New freestall & heifer barns.  
Freestall barn renovations.  
We specialize in all types of dairy curtains.

2812 Old Phila. Pk. (717) 768-0304  
Bird in Hand, PA 17505

**RUNNING LOW ON HIGH-OLEIC (PLENISH) BEANS?**

We can now sell **Plenish Flaked Toasted Beans** directly to you!  
Call for pricing & delivery info!

**Weaver's Toasted Grains**  
Toasted is Tastier!

**Toasted is Tastier!**  
(717) 355-BEAN (2326)  
220 White Oak Road  
New Holland, PA 17557

**KING**  
Premier Dairy Facilities  
**Dean Hoover**

King Construction Co., LLC Office: (717) 354-4740  
525 Hollander Rd. Cell: (717) 304-4993  
New Holland, PA 17557 dhoover619@comcast.net

**Building Contractors:**  
Our directory of building contractors runs the 2nd and 4th weeks of each month. Call our advertising department to find out how to be included.  
**717-656-8050**



# Lancaster DHIA

# New England, New Jersey, New York

SAMUEL L. STOLTZFUS	67 XX	18528	810	596
<b>HERDS WITH A RHA SCC LESS THAN 200,000</b>				
SAMUEL L. STOLTZFUS	XX		173	67
DREAMROAD JERSEYS LLC.	JE		179	66
PETERSHEIM, IVAN & ESTHER	HO		186	72

## Ontario County

LAKE COUNTRY HOLSTEINS	69 HO	32420	1234	1032
NEVIN SENSENIG	59 HO	28946	1206	939
NELSON SENSENIG	53 HO	28968	1158	924
RUEBEN WEAVER	49 HO	27462	1253	921
HARVEY SENSENIG	59 HO	28113	1125	916
LEON NEWSWANGER	56 HO	29164	1133	913
DAVID BURKHOLDER	47 HO	28351	1208	903
VERNON OBERHOLTZER	89 HO	25346	1174	863
LEWIS R. SAUDER	48 HO	26265	1101	838
ARTHUR ZIMMERMAN	164 HO	24967	862	780
CLEARVIEW FARM	60 HO	24436	1001	743

### HERDS WITH A RHA SCC LESS THAN 200,000

DAVID BURKHOLDER	HO	70	47
HARVEY SENSENIG	HO	75	59
NEVIN SENSENIG	HO	83	59
VERNON OBERHOLTZER	HO	90	89
CLEARVIEW FARM	HO	105	60
LAKE COUNTRY HOLSTEINS	HO	144	69
ARTHUR ZIMMERMAN	HO	149	164
RUEBEN WEAVER	HO	179	49
NELSON SENSENIG	HO	189	53
LEON NEWSWANGER	HO	194	56

## Otsego County

EVAN M. CHARLES	64 HO	26037	1034	848
MARVIN FISHER	58 XX	23803	887	728
MATHEW FISHER	62 HO	22521	992	692
<b>HERDS WITH A RHA SCC LESS THAN 200,000</b>				
EVAN M. CHARLES	HO	144	64	

## Schoharie County

ERIC & TAYLOR BOGARDUS	28 HO	25849	906	813
SLATEHILL FARM	122 HO	22909	945	738
ERIC & TAYLOR BOGARDUS	32 AY	18136	683	564

### HERDS WITH A RHA SCC LESS THAN 200,000

ERIC & TAYLOR BOGARDUS	AY	143	32
SLATEHILL FARM	HO	190	122
ERIC & TAYLOR BOGARDUS	HO	193	28

## Schuyler County

MARLIN HOOVER	42 HO	22681	923	723
BROOK'S EDGE DAIRY	77 HO	21381	898	683
ALLEN, THOMAS R.	47 HO	16537	652	522

## Seneca County

WINDY HOLLOW FARM	174 HO	25212	1006	785
KEITH MARTIN	76 HO	23441	920	750
CLAIR ZIMMERMAN	88 HO	24590	940	743
DELMAR & DAWN MARTIN	107 HO	22023	868	684

### HERDS WITH A RHA SCC LESS THAN 200,000

CLAIR ZIMMERMAN	HO	147	88
DELMAR & DAWN MARTIN	HO	147	107

## Steuben County

PAUL & KATHIE WHITE	115 HO	27925	1227	882
<b>HERDS WITH A RHA SCC LESS THAN 200,000</b>				
PAUL & KATHIE WHITE	HO	135	115	

## Tioga County

LAWTON JERSEY FARM	102 JE	21108	1033	750
<b>HERDS WITH A RHA SCC LESS THAN 200,000</b>				
ROGER FORD	XX	170	43	

## Tompkins County

HOUSTON, MARLIN JR.	139 HO	20143	793	627
<b>HERDS WITH A RHA SCC LESS THAN 200,000</b>				
HOUSTON, MARLIN JR.	HO	197	139	

## Washington County

CHRIS CURTIS	184 HO	24786	981	806
WINDY LEA DAIRY LLC.	142 HO	18777	782	588

### HERDS WITH A RHA SCC LESS THAN 200,000

CHRIS CURTIS	HO	146	184
YOUNG, JENNY	AY	147	46

## Wayne County

ANTHONY HIGH	146 HO	27571	1160	887
KEVIN HUBER	67 HO	27735	1266	876
DWIGHT SENSENIG	79 HO	24999	974	798
LARRY MARTIN	95 HO	24740	997	768

### HERDS WITH A RHA SCC LESS THAN 200,000

KEVIN HUBER	HO	53	67
ANTHONY HIGH	HO	97	146
DWIGHT SENSENIG	HO	137	79
LARRY MARTIN	HO	138	95

## Yates County

NATHANAEL MARTIN	45 HO	27817	1111	903
MATTHEW ZEISET	62 HO	29205	1180	901
CLARENCE GARMAN	56 HO	27036	1103	872
DAVID MARTIN	53 HO	26933	1095	861
DANIEL K. MARTIN	63 HO	27525	1086	851
DAVID HORST	49 HO	26591	1142	850
WARREN MARTIN	71 HO	27511	1130	840
MERVIN LEE ZEISET	45 HO	26237	1083	835
AMMON REIFF	60 HO	24154	1014	814
DUANE MARTIN	45 HO	26307	1007	788
TOWNRIDGE FARMS LLC.	147 HO	24848	927	786
LEON WEAVER	58 HO	23509	960	767
NEIL WEAVER	36 HO	25050	933	764
SCENIC RISE DAIRY	56 HO	24044	926	754
JOHN BURKHOLDER	46 HO	23098	905	711

DELMAR BURKHOLDER	59 HO	22603	912	704
BRANDON HOOVER	51 HO	22096	908	698
VINE VALLEY FARM	221 BS	20626	854	695
HARVEY N. HORNING	45 HO	21520	890	673
MARK HOOVER	57 HO	21171	844	649
ROLLEN N'S DAIRY	70 HO	20120	811	625
ANDREW Z. LEID	51 HO	20305	780	602
CLEASON MARTIN	36 HO	17748	750	578
WILMER HORNING	45 HO	18386	712	570
MARTIN FOX	45 XX	15890	719	558
MERVIN MARTIN	38 JE	15138	718	542
RICHARD NOLT	41 JE	14339	669	504

### HERDS WITH A RHA SCC LESS THAN 200,000

DAVID MARTIN	HO	54	53
NATHANAEL MARTIN	HO	62	45
MERVIN LEE ZEISET	HO	66	45
DANIEL K. MARTIN	HO	71	63
JOHN BURKHOLDER	HO	87	46
ROLLEN N'S DAIRY	HO	89	70
CLEASON MARTIN	HO	94	36
MATTHEW ZEISET	HO	95	62
AMMON REIFF	HO	100	60
CLARENCE GARMAN	HO	101	56
RICHARD NOLT	JE	104	41
WARREN MARTIN	HO	104	71
PHILIP MARTIN	HO	105	25
SCENIC RISE DAIRY	HO	117	56
HARVEY N. HORNING	HO	119	45
LEON WEAVER	HO	125	58
DELMAR BURKHOLDER	HO	128	59
BRANDON HOOVER	HO	150	51
DAVID HORST	HO	161	49
DUANE MARTIN	HO	164	45
AARON H. KILMER	HO	165	37
ANDREW Z. LEID	HO	167	51
MERVIN MARTIN	JE	194	38

## NEW JERSEY

## Burlington County

HOLLAND VALLEY FARM	35 HO	19197	755	607
---------------------	-------	-------	-----	-----

**SAVINGS ON PATZ VERTICAL MIXERS**  
SEE YOUR LOCAL PATZ DEALER FOR DETAILS

**Patz**  
2400 Series III  
950

CONTACT DEALERS FOR SAVINGS ON OTHER QUALIFYING PRODUCTS!

Patz Corporation POUND, WI 920-897-2251

# CERTIFIED ORGANIC CATTLE WANTED

## NICHOLAS MEAT LLC

Modern Meat Processor Paying a Premium For Your Certified Organic Cattle

Purchasing on Dressed Weight and Grade Basis

Nicholas Meat LLC is an approved Certified Organic Meat Processor. We are looking to purchase all your Certified Organic Cattle. Customers can deliver cattle to the plant Monday through Friday 7 A.M. to 1:30 P.M. Nicholas Meat LLC has also established several collection points.

### Cattle can be taken to:

#### Vintage Sales Stables, Inc.

3451-3457 Lincoln Highway East, Paradise, PA 17562  
Every Thursday from 9 A.M. to 3 P.M.

#### Weikert Buying Station

721 Carrolls Tract Rd., Fairfield, PA 17320  
Mondays from 9 A.M. to 4 P.M.

#### New N.W. Sales Company

2006 Mercer-New Wilmington Rd., New Wilmington, PA 16141  
2nd and 4th Monday of each month.

#### Belleville Livestock Market

26 Sale Barn Lane, Belleville, PA 17004  
Every Wednesday.

#### R&C Calf Farms, LLC

13071 Emerson Rd., Applecreek, OH 44606  
Mon. -Thurs. 9 A.M. to 2 P.M. (Behind sale barn in Kidron)

**Please bring a copy of your Organic Certificate with each shipment!**

Please call the number below to inquire about these collection points or to schedule your sale of Certified Organic Cattle to Nicholas Meat, LLC.

## NICHOLAS MEAT LLC

508 East Valley Road, Loganton, PA 17747  
Please call Nicholas Meat LLC – 570-725-3511

### PENNSYLVANIA

Mercersburg	Cedar Crest Equipment LLC	717-660-0060
Myerstown	Cedar Crest Equipment LLC	717-866-1888
Quarryville	Cedar Crest Equipment LLC	717-529-2782
Troy	Fallbrook Fabrication	607-426-0592

### VIRGINIA

Harrisonburg	C&C Farmers Supply Corp.	540-433-8532
--------------	--------------------------	--------------

### NEW YORK

Collins	A.R. Timmel	716-532-2040
---------	-------------	--------------

### Territory Sales Manager

Paul Kratz • 920-897-9212  
paulkratz@patzcorp.com



**A reminder:**

# Young Jersey enthusiasts have a deadline coming up

REYNOLDSBURG, Ohio — A reminder that Thursday, August 1 is the deadline to have your Registered Jerseys transferred to be eligible to show at the All American Junior Jersey Show.

Here are the steps a Junior (under 20 years of age) needs to take in order to show a Jersey at all shows. Can an animal be leased or does the animal need to be transferred into the Junior's ownership?



The answer is simple: File a transfer of ownership so that the Junior is listed as a Recorded Owner on the registration certificate.

Ownership rules vary from state to state. Some do allow leasing. Others allow animals to be registered in the farm name, but require that paperwork be completed and filed certifying that an animal is the Junior's 4-H or FFA project.

What about the All American Junior Jersey Show, the biggest Junior Jersey show of the year? The ownership policy is as follows:

- Animals are eligible when recorded by the American Jersey Cattle Association in the Herd Register or with Generation Count 4 or greater, or by Jersey Canada with registry status of 93.75% and greater.

- The exhibitor must be listed as Recorded Owner on the registration certificate, either (1) as the sole owner or (2) by his/her name in joint ownership. If the joint ownership includes more than one person meeting the eligibility require-

ments of Rule 1 (above), one of them must be declared as the exhibitor during check-in.

- Animals must be registered and/or transferred to meet one of the above ownership requirements on or before August 1, 2024. The recording date is the postmark date and will be considered the date of registration and/or transfer.

To read more about the implementation of Generation Count for national shows, please visit the USJersey website for more information.

So, submit the transfer of ownership as soon as you figure out which animals are going to be the projects this year. That one step will save you the effort of researching the exhibitor ownership requirements for all the shows you are considering.

**A final note:** Exhibitors at the All American Junior Jersey Show are also required to be members (Junior or lifetime) of the American Jersey Cattle Association. Applications for membership (free to youths) are available online at USJersey.com.

## BARGAINS YOU CAN'T BEAT!

### ATTENTION DAIRY FARMERS

We Need Good Used Tanks • 100-8,000 gal. - Call Us

- |                              |                            |                             |
|------------------------------|----------------------------|-----------------------------|
| • 180 Milkeeper              | • 600 Mojonier             | • 1000 Storage              |
| • 2 <del>SOLD PA</del>       | • 600 Mueller M            | • 1250 Gal. Storage         |
| • 210 Sunset A               | • 60 <del>SOLD PA</del> OH | • 1250 Mueller OH           |
| • 300 Delaval                | • 600 Mueller OH           | • 1350 Mueller OE           |
| • 300 Sunset                 | • 625 Sunset               | • 1500 Gal. Storage         |
| • 400 Mojonier               | • 700 Mueller M            | • 150 <del>SOLD PA</del> OH |
| • 400 Mueller M              | • 735 Sunset               | • 1500 Mueller OH           |
| • 415 Sunset                 | • 800 Delaval              | • 1600 Mueller OE           |
| • 50 <del>SOLD PA</del> tier | • 800 Mojonier             | • 2000 Delaval              |
| • 500 Mojonier               | • 800 Mueller OH           | • 200 <del>SOLD PA</del> OE |
| • 545 Sunset                 | • 1000 Mueller M           | • 2000 Mueller OH           |
| • 600 Delaval                | • 1000 Mueller OH          | • 3000 Surge                |

Tube-coolers  
HEAT EXCHANGERS  
300-6000 Gal. Storage Tanks  
Installation, Sales & Service  
**SHENK'S**

505 E. Woods Drive, Lititz, PA 17543 • Sales 717-626-1151

## Poly View Agricultural Feed Bins



### Advantages of Poly Bins

1. Never rusts
2. Poly View - Always able to see your feed level
3. Minimal or no condensation on the inside wall, totally opposite of metal bins
4. Lasts for many years
5. No salt or mineral problems
6. 10 year warranty
7. All Frames are Hot-Dipped Galvanized



Ulti-Mat All Rubber Cow Mattress Installation  
Continuous Cow-Comfort – THE ONLY All Rubber Mattress that recovers to original shape after cow movement.

Superior Continuous Roll Rubber Flooring Available!  
Up to 14.5' wide & 150' long.  
All NEW Virgin Rubber

**Zartman Farms** Cow Comfort Systems, Inc.  
820 Hilltop Rd., Ephrata, PA 17522 • 717-733-1050  
Northeast U.S. Distributor of Poly Dome Equipment • Wholesale & Retail  
zartmanfarms@dejazzd.com • www.zartmanfarms.com

## IF YOU HAVE COWS, YOU NEED...



Fight Bac is the most effective disinfectant for teats post milking, newborn calf navels, cuts, wounds, injection sites, and udder rot (when nothing else works). Also, use it to cleanse a teat prior to intramammary infusion.

# Fight Bac®

The smart way to disinfect teats and so much more.

1-800-656-6007 | www.FightBac.com



Visit booth D118 at Ag Progress Days and receive a free can!

# New Jersey Holstein picnic



Two wagon tours were offered: One out to the fields, irrigation systems keeps crops green and growing; the other to cow, calf and heifer barns.

PILESGROVE, N.J. — The annual summer picnic of the New Jersey Holstein-Friesian Association took place on Saturday, July 20, hosted by the Eachus Family of Myerwood Farms, LLC, located just a few miles east of the famed Delaware Memorial Bridge(s) and an hour or two from the Atlantic Ocean, depending on traffic. Farm preservation programs have helped to keep the land in agriculture, but the number of dairy farms has declined. Myerwood has bucked the trend. Cows are “in their blood”. The all-registered herd of Holsteins is a source of pride and joy.

Myerwood Farms LLC is owned and operated by Woody and Margery Eachus and their children, Melanie Richman and Kevin Eachus (6th and 7th generation family members to farm at this location). Also integral to the operation are Kevin’s son Colton and nine employees.

Myerwood is home to 1000+ Registered Holsteins, with an RHA of 29,700M 1159F 920P. The cows are milked 3x in a double-12 parabone parlor and housed in deep sand-bedded freestalls with an automatic sprinkler system above feed bunks. Cows are classified every seven months and many calves are leased to 4-H kids each year.



Cargill, represented by Jason Irwin, left, and Steve Isaacson, sponsored lunch, which was catered by a well-known catering service in Salem County.



Something unique and interesting was the tour of a house, the original portion of which was constructed in 1762. Elizabeth Myer led the tour — a special treat — offering more than a glimpse of a beautifully kept home, floor by floor, room to room and all furnishings too. A magnificent tour guide, she was, and just three years shy of her 100th birthday. She stands in the center, surrounded by family and friends.



Single file, visitors took their time to admire the landscape.



A variety of food and drinks was in good supply; no one left hungry.



Two small tents were put up on the lawn in

# ic included a special treat

Heifers are raised in straw-bedded monoslope roof barns with access to pasture. Calves are fed acidified whole milk and raised outside in individual hutches.

Emphasis is placed on growing high-quality forages (bunker, trench, baleage) include corn silage, snaplage, triticale, rye, alfalfa, oats, sudax, and corn stalks on 1000 acres, with the majority being double-cropped. Straw is purchased.

Highlights of the farm tour included a Smaxtec animal monitoring system (activity, body temperature, water intake, rumination), BouMatic milk meters, DairyComp management software, John Deere chopper with kernel processor, silage defacer, Digistar scales on two mix wagons, round baler, bale wrapper and an innovative drive-over manure lagoon system.



There was much to see at Myerwood Farms, where the 6th and 7th generation continue a centuries-long tradition of working with cows. Woody and Marge Eachus were the first to switch to Registered Holsteins in 1974, starting with a herd of 60 cows.

Photos by Dieter Krieg



Melanie Richman and Matt Puskas review notes related to the happenings at the picnic.



The Eachus Family of Myerwood Farm hosted the event, which drew a sizeable crowd of Holstein breeders along with industry people from northern, central and southern New Jersey. Pictured left to right are Colton and Kevin Eachus; Bradley and Hanna Richman, Woody and Margie Eachus and Melanie (Eachus) Richman.



...ping, not the least of which were the black-eyed susans.



...n front of the farm house at Myerwood Farms to enjoy food and fellowship.



Melanie Eachus Richman was in charge of introductions, following her duties as tour guide through the dairy facilities.



The top three individuals in the senior division of the Folding Display Contest in the Creative category were Alex Empet (not pictured) from Pennsylvania; and Carlee and Chloe Roell from New Jersey.



The top three individuals in the junior division of the Folding Display Contest in the Scientific category were Lydia Couch from Pennsylvania (not pictured), Kyra Lamb from New York and Valentina Maza from New Jersey.



The top three individuals in the intermediate division of the Prepared Public Speaking Contest were Atley Shafer of Maryland; and Elsie Donlick and Lilly Mills, both from New York.



The top three individuals in the junior division of the Prepared Public Speaking Contest were Avery Best, Florida; Camden Huff, Georgia; and Brady McConnel, Wisconsin.

## Holstein Juniors

from page 5

tractiveness, originality, and overall appearance.

1. Virginia, 2. California, 3. Ohio

• **Mission membership**

Pennsylvania took home the honor in 2024, with an impressive membership increase of 54 new members. The honor is calculated on a percentage increase from January 1 to June 1 of the convention year.

• **NHWSO Awards Scholarships**

Four Junior Holstein members were awarded scholarships by the National Holstein Women's Scholarship Or-

ganization (NHWSO): Kylie Konyn from California and Brianna Meyer from Wisconsin, received \$3000 scholarships. Madelynn Hoffman from Pennsylvania, and Clarissa Ulness, Wisconsin, received \$1500 scholarships.

• **Three new youth representatives** were elected to the National Junior Advisory Committee (JAC). Madeline Hensel was elected to represent Area III, Jon Chapman was elected to represent Area IV, and Madison Mowrer was elected as the new at-large member.

The JAC is the governing body of the Junior Association and oversees the organization's activities. Youth committee members are elected by the Junior membership at the National Junior Forum, and members serve two-year terms.

## Got your T-shirts yet?

Two styles of Farmshine T-shirts are available in various colors and sizes.

**Dairy Farmers Squeeze to Please** -- a Farmshine original since 1981, has been a big seller for nearly 40 years. It is available in either golden yellow or medium gray.

**Cows Got Milk ... Providing Goodness Worldwide** is a Farmshine original, introduced in 2013. It is available in lime green, medium gray, light yellow and pink. The shirt's message is meant to help convey a positive message about milk to the public.

Both T-shirt designs have the familiar Farmshine logo on the back.

We invite you to wear any of these T-shirts. Mix or match in any quantity. Postage is included in the price and discounts are available for orders of 10 or more to the same address.



Modeling the T-shirt is 20-month old Emily Krieg.



Modeling the T-shirt is 4-year old Geneva Styer, daughter of Heidi and Andy Styer and granddaughter of Farmshine Editor, Dieter Krieg.

### DAIRY FARMERS SQUEEZE to PLEASE

**T-SHIRT ORDER FORM**

NAME: \_\_\_\_\_

ADDRESS: \_\_\_\_\_

PHONE: \_\_\_\_\_

Sizes available (Please circle):

Child: S M      Adult: S M L XL XXL

Grey or Yellow      Yellow or Grey

Amount Enclosed: \_\_\_\_\_

### cows got milk providing goodness worldwide

**T-SHIRT ORDER FORM**

NAME: \_\_\_\_\_

ADDRESS: \_\_\_\_\_

PHONE: \_\_\_\_\_

Sizes available: Please circle

Child: S M      Adult: S M L XL XXL

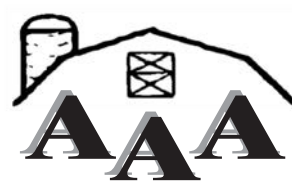
Colors available (Please circle):

Lime Green • Medium Grey • Pink • Light Yellow

Amount Enclosed: \_\_\_\_\_



All orders MUST be pre-paid. Please be certain to enclose \$12.50 for each adult shirt and \$10 for each child shirt. (Which includes postage and handling).  
Farmshine, 342 E. Main St., Suite 201, Leola, PA 17540



Hardware • Pet • Farm  
Lawn & Garden • Construction  
Phone 717-445-8517

# Supply

Hours: Mon-Wed. 6 a.m.-5 p.m. | Thurs-Fri. 6 a.m.-8 p.m. Sat. 8 a.m.-3 p.m.

## 31<sup>st</sup> Annual Anniversary Sale August 5-10, 2024

# 10% OFF Everything!

No discount on purchases less than \$50.  
All prior bills must be paid before discount.

Livestock Supplies  
Animal Health  
Dairy Supplies  
Farm Gates  
Fencing & Supplies  
Milk Replacer  
Vaccines, Vitamins  
Horse Supplies  
Tools, Hardware  
Pet Supplies, etc.



**\*\* Soft Ice Cream & Lunch Provided Mon.-Fri. \*\***



## Brantners win the banners at Northwest Pa. Holstein show

With banners in hand, the Brantner family and friends pose with a couple of winners from their show string. Standing from left to right are Jelena Brantner, Sutton Paulson, Mark Brantner, Grant Fremstad, and Cheyanne Brantner. Kneeling are Rily Nolf and Mattie Campbell. Their victories included the reserve

intermediate champion of the open show; Show-Mar Mastermind, a senior 2-year old. Adding to the points were their first-place junior 2-year old, Show-Mar Showtime Daisy; their second-place junior 3-year old, Show-Mar Sidekick Sunshine; their second-place 5-year old, Show-Mar Tattoo Rock-Twin;

their winner of the 150,000-pounds class, Show-Mar Crush Everyone; and a second place for best three females. Please look for more extensive coverage of the show in next week's Farmshine.

Photo by Jordan Anderson



- Loans and Leases
- Tax Services
- Payroll Services
- Business Consulting
- Record-keeping
- Country Home Loans
- FarmStart for New Businesses
- Real Estate and Equipment Appraisals
- Crop Insurance

Farm Credit East is deeply rooted in our customers' success – and Northeast agriculture. In fact, no one knows ag quite as well as Farm Credit East. So if you're looking for financing or business services for your agricultural operation – of any size or type – look to Farm Credit East. **Our mission is to grow your success.**



# FARM CREDIT EAST

800.562.2235 | FARMCREDITEAST.COM



# Lancaster County dairy farm hosts 29,000 at 30th HPD



It is like Ag Progress Days for those who farm with horses but drawing crowds even larger from multiple states and countries.  
Photo by Sherry Bunting

By **SHERRY BUNTING**  
Special for Farmshine

GORDONVILLE, Pa. — Like Ag Progress Days, but for those farming with horses, the annual Horse Progress Days (HPD) is a national, even international, event. It drew a reported 29,000 to eastern Lancaster County, Pennsylvania on July 5th and 6th.

Levi Fisher and his family hosted the 30th HPD at their Wireless Valley dairy farm in Upper Leacock Township. The event got its start in Pennsylvania and was held in the Keystone State five prior years: 1998, 1999, 2005, 2011, and 2017.

A casual view of pasture parking at noon on the second

day revealed many charter buses and vans from as far away as Wisconsin and Ontario, Canada, as well as trucks and cars with license plates from 10 different U.S. states and Canada. Seminars featured farmers from as far away as Germany. Of course, many locals also arrived by buggy, bicycle, and on foot.

Levi Fisher has been to previous events. This one was different.

“It was a blur, that’s what I tell people. Horse Progress Days came and went, and I asked myself where I was. There were so many things to see. My only disappointment is I didn’t see everything,” says Fisher, who had committed himself to taking the children from the Community Care Center on rides throughout the venue by wagon in three shifts both days.

The children were pretty excited.

This event “encourages and inspires our young generation to be farmers,” he observes, noting that produce farming was added to the demonstrations a few years ago, and seminars this year featured homesteading. Organizers are always looking at the trends in how small farms make a living.

While there are not as many dairy and crop farmers among even the anabaptist communities today as in years’ past, it is the field crop demonstrations with the teams of horses and mules that draw the big crowds.

Fisher finds encouragement in seeing the number of people with farming in their background, wanting to make sure their children can see it.

He was also amazed at the general coordination of the whole event.

“Anyone here could see the power of working together. No one was exactly overwhelmed. Everyone did a little, and a lot got done,” he says.

It is this concept of working together, and seeing how things can happen, that can be applied to most other areas of life.

Fisher knew his farm was selected for the 2024 HPD two years in advance. His part in the preparation was to make sure he had what was needed on the crop end.

He seeded some acreage against his old alfalfa to make the turn to page 17



## Reimagine your resources.

Maximize your manure’s potential with the new GEA SlopeScreen™ separator and OptiClean™ automatic cleaning system. The improved modularity of the SlopeScreen combined with the superior cleaning power of OptiClean delivers adaptability, reliability and efficiency using less labor.



➔ Contact Your Local GEA Manure Equipment Dealer:

**Cedar Crest Equipment**  
Myerstown, PA • 717-866-1888  
Mercersburg, PA • 717-660-0060  
Quarryville, PA • 717-529-2782

**Material Management Systems, Inc.**  
Meadville, PA • 814-724-5011

[GEA.com/DairyFarming](http://GEA.com/DairyFarming)

**GEA** Engineering for a better world.



**Power Systems Electric Inc.**

**Emergency Generator Systems & Service**  
885 South Railroad Street, Myerstown, Pa 17067

**Sales, Service, & Rentals**  
Providing service for most brands



**Maintenance Programs**

New & Used Gen Sets, Transfer Switches, PTO Gens.

**24 HR EMERGENCY SERVICE**



[info@psegenerators.com](mailto:info@psegenerators.com)  
[www.psegenerators.com](http://www.psegenerators.com)

For all your generator needs call (717)933-5617





Children took pony carts with food and drink out to the demonstration plots across the sprawling venue. Photo by Melanie Messner



Mule drawn shuttle wagons, like this one, were adorned with 97 Milk banners. Photo by Sherry Bunting

## Horse Progress from page 16

bigger plot needed in one big square. He also varied his corn plantings so that they would have both 12-inch and 18-inch for demonstrations, and he kept the grounds mowed.

The HPD organizers came out to take care of all the produce plantings.

Around 400 vendors participated in the large trade show featuring agricultural, construction, and homesteading equipment and supplies. Many were demonstrating the latest innovations for all types of horse-powered equipment, including conventional and organic field crops and garden produce, as well as dairy, beef, small livestock and poultry.

Large draft horse and mule teams pulled implements for field crop planting, spraying and harvesting, while gardening innovations were demonstrated with Haflingers and ponies. One competition measured horsepower, hitching pairs to a dynamometer.

The logging area worked all day, and during the breed presentations, an impressive 8-mule hitch pulled a wagon with three logs, each weighing 7000 pounds. Those mules pulled more than their weight, and made it look easy.

The temporary grandstands were filled for the popular horse training seminars and the impressive introduction of the breeds. Harmony Hollow of Denver did a presentation on the use of horses in therapy for children with special needs, and Fisher was invited to present on the anabaptist Community Care Center, how horses and farming are integral to teaching life skills.

New this year were seminars on homesteading with poultry, goats, and sheep, and even food processing workshops.

Mule- and horse-drawn wagons took attendees around the grounds. Some were adorned with 97 Milk banners, along with sponsoring vendor banners. Dairy Pricing Association,

of which Fisher is a member, sponsored whole chocolate milk for the 97 Milk booth.

While the thousands attending HPD were mainly from anabaptist communities, others attended as well.

The event kicked off with a Pony Express for the children both mornings, and youths could be seen daily in mini carts taking food and drink out to demonstration plots across the sprawling venue.

Accomplished young horsemen, including one of Fisher's sons, formed the mounted safety crew, parking cars and doing traffic control and other crowd safety measures. They met a few times before the event to learn how to read people.

Ice cream and milkshakes were among the top food and drink sales, and four large water tanks were placed throughout the grounds for attendees to fill at no cost the bottles that were handed out free at the entry gates as temperatures reached near 100 degrees F.

A few thousand feet of underground piping had been put in through Fisher's fields to pipe the water from one large tanker trailer to the various self-serve tank stations for human consumption as well as to the tents and to every spot where there were horses.

One tent provided activities for children and a play area, while older youth gathered in groups, some playing volleyball by the barn. Agricultural business and innovation were on display, and the crowds were large, yet the event had a family reunion feel.

Now, just 20 days later – apart from a few tracks in the hayfields – Wireless Valley dairy farm looks pretty much like this huge sprawling event never even happened. The temporary grandstands and tents are gone, the underground piping for the water tanks removed, and Fisher has chisel plowed some of the trade show grounds, planting soybeans that are already greening up with the much needed recent timely rains.

Would he host Horse Progress Days again or recommend it to others? "I probably would," he says. "I think it was a good experience and something we'll think and talk about for a long time as a family."

Faith, farming, family, and fellowship in everything from production agriculture to homesteading with horses... what better way to remind young generations of their agrarian heritage while providing encouragement and inspiration to make farming part of their futures.

**Keystone Concrete Products, Inc.**  
477 E. Farmersville Rd.  
New Holland, Pa. 17557



(717) 355-2361 - corporate office  
(717) 355-9548 - fax  
keystoneconcreteproducts.com

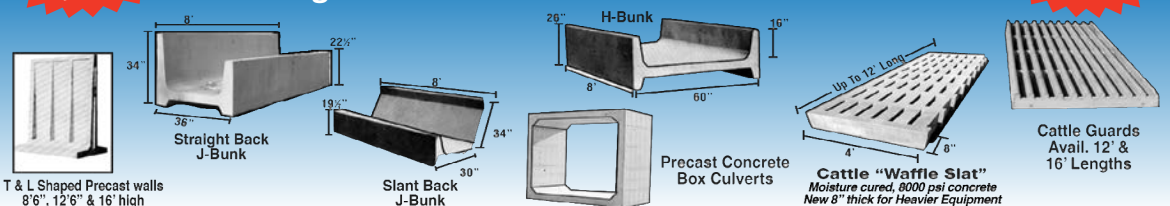
**NEED THAT BUNKER? CALL ASAP TO RESERVE YOUR WALLS!!!**



Secure Cover Dealer

Financing Available

**Agricultural Pre-cast Products Available:**



**Heat Stressed Livestock?**

provide cool comfort with **COOLfog™** AGRICULTURAL COOLING SYSTEMS

COOLfog high pressure foggers cool your barn 15+ degrees! Act now to save your production!

Call today for more information: **717-445-6061**  
Fax: 717-445-9303

**JRS AG ASSEMBLIES LLC**

268 Pleasant Valley Rd., East Earl, PA 17519

# High prices defined 'Swissconsin National Sale'

DE PERE, Wis. — The final day of the 2024 National Brown Swiss Convention culminated with the Swissconsin National Sale held on Saturday, July 6th, at the Brown County Fairgrounds in DePere.

Topping the sale at \$17,000 was Lot 2 - Hilltop Acres Nash Pixie-ET, born in June of 2023. A Hilltop Acres Nashville daughter from Hilltop Acres Princess ETV E91, she boasts a +204 PPR and a 2-11y 365d 3x record of 44,160M 5.7% 2525F 3.8% 1696P. The next five dams all carry the Hilltop Acres prefix and each produced over 30,000 lbs. of milk. She was consigned by Dennis Mashek, Hilltop Acres, Calmar, Iowa, and purchased by !!!!

The second high seller, selling in absentia, was Lot 23, La Rainbow Sweet Sangria, who sold for at \$15,500. She was the first-place summer junior 2-year-old and honorable mention intermediate champion at the 2024 Mid-Atlantic Brown Swiss Invitational Show. A CA Mascari Luth Bloom Lover daughter, Sangria is out of La Rainbow Sweet N Spicy-ET (VG-87) with a record of 3-3y 365d 2x 25,420M 4.4% 1121F 3.6% 906p. The second dam is La Rainbow Sweet Spice-ET (VG-88)

and Nominated All-American Yearling in Milk in 2019. Her third dam is the well-known La Rainbow Sweet Silk ETV (EX-91) with 3-7y 365d 2x record of 26,896M 5.3% 1425F 3.5% 930P. Silk has numerous sons in A.I. including La Rainbow Sweet Silver who was a former top PPR bull. Sangria was consigned by Cindy Warner, Round Hill Acres, Frederick, Maryland and the purchase of Brody Jackson, Blake and Garrett Hill of Cattaraugus, N.Y.

Selling for the third-highest price — \$9600 — was Lot 14, Just So F Faithfilled, a fancy March calf. She had just won the spring calf class at the ST National Junior Heifer Show for Elin Stilling. She is backed by eight generations of dams scored Excellent. Faithfilled is sired by Brown Heaven C First Choice-ET from Just So A Faith (EX-91) with a record of 5-5y 331d 2x 28,020M 4.2% 1186F 3.6% 1012P. Her second dam is Cutting Edge Fawn (EX-93), the Reserve All-American 4-Year-Old in 2018 and Nominated All-American 5-Year Old in 2019. The third dam is Cutting Edge Elite Fayann (EX-90), the All-American Junior 3-Year-Old in 2014. The fourth dam is Jerland Starbuck Fargo-ET (EX-91), first place senior 2-year-old at the Royal Winter Fair in 2010.

Her 5th dam is Mort Tower Frisky (3E-94), a 3-time All-American and World Dairy Expo champion. Consigned by Just So Farm, Lake Mills, Wis., Faithfilled was purchased by Junior member, Abigail Dietsche of Bloomer, Wis.

Other high sellers:

• Lot 1 - VB Joey Sin City, a January calf, \$9000. Kylie Chittenden, Whitting, Vt., was the buyer; Voegeli Farm from Monticello, Wis. the seller.

• Lot 28 - Knapp Norwin Disturbia ETV, born October 2023, \$7650. Buyer: Tenley Chittenden, Whitting, Vt. Seller: Knapp Genetics, Epworth, Iowa.

• Lot 6 - Jenlar Collaps Wellknown ETV a March calf, \$7200. Buyer: Iroquois Acres, Bridport, Vt. Seller: Brianna Meyer, Jenlar Brown Swiss, Chilton, Wis.

• Lot 3 - Cozy Nook Titos Tiki, a January heifer, \$7000. Buyer: Sandy Creek Dairy, Hastings, Mich. Seller: Cozy Nook Fann, Wauke-

sha, Wis.

• Lot 54 - Kruses Famous Billie Jo ETV, a senior 2-year old, \$7000. Buyer: Peter Vail, Valatia, N.Y. Seller: Siegerts Swiss, Peosta, Iowa.

Thirty-seven live lots, of which 31 were open heifers and calves, averaged \$5140.54. Eleven embryo packages totaling 50 embryos averaged \$755 per embryo. There were 45 buyers hailing from 12 states.

Auctioneer duties were handled by Adam Fraley from Pennsylvania with pedigrees read by Brown Swiss Association Executive Secretary, Norman C. Magnussen. Ringmen were: Lee F. Barber Jr, Lynn Harbaugh and Austin Knapp. The sale crew included Curtis, Heidi, Delaney, Kalli and Cooper Barber, Tyler Endres and Andrew Evans. Allicia Horn from Brown Swiss Enterprises, Inc. served as the clerk. The sale was managed by Brown Swiss Enterprises, Inc., Beloit, Wis.

## Brown Swiss recognitions bestowed



A highlight of the Junior Awards Program is the Ambassador Contest. Isabella Wilbur of Vermont, seated on the left, was named Alternate Brown Swiss Ambassador. On the right is Hannah Loftin of North Carolina, the National Brown Swiss Ambassador. Standing behind them are Shelby Biasini of Vermont, left, and Natalie Roe of Wisconsin, the retiring National Brown Swiss Ambassadors.

GREEN BAY, Wis. — Numerous adult and youth Brown Swiss enthusiasts were recognized at the National Brown Swiss convention, held here earlier this month. The list of honorees included:

Ashtyn Gehringer of Pennsylvania for cheese yield; Rylee Willrath of Ohio for production; Kelsie Britton of Ohio for cheese yield; Emily Button of New York for production and cheese yield; Ashlynn Schultz of Illinois, cheese yield.

And, all from Wisconsin, were honorees Danica Stello, District 5 youth achievement; Tyler Schroeffer, District 5 production and cheese yield; Natalie Roe, youth achievement; Alexis Blankenburg, youth achievement; and Quincee Johnson, Brown Swiss Association.

Kylie Konyon from Wisconsin was awarded the Howard Voegeli Memorial Award.

Lauren Benfer of Kansas and Tatum Copeland of Oklahoma were named Junior Youth Achievement winners in District 8.

Hannah Loftin of North Carolina won the Joe Miller Memorial Award.

## Longevity & Speed

The dairy industry is being pushed to increase herd longevity to at least 6 lactations. Increased lactations yield higher production with fewer resources (labor, forage, water) for replacements. Increased longevity requires an improved milking process that quickly and efficiently milks the udder without stress and mastitis. TridentPulsation™ has proven on large and small dairies that achieving increased lactation goals is practical. Milking speed is significantly improved at all vacuum levels.

TridentPulsation™ offers user selectable rates/ratios with a constant monitor to ensure proper function. A feature to hold the liner open on attach/detach addresses good and gentle liner attach/detach.

607-849-3880 TridentPulsation.com

## Beat Heel Warts with the power of ZINK.

Easy to use and proven effective – make the switch today!

Hoof-Zink E-Z Liquid is the hoofbath solution you can count on to beat heel warts.

- 💧 As effective or MORE effective than copper.
- 💧 Economical.
- 💧 Zinc enriches your crops.
- 💧 No mixing dry powder! Pour in hot or cold water.
- 💧 No toxic Formaldehyde.

Break the copper habit at [www.hoofzink.com](http://www.hoofzink.com) (888) 727-ZINK

# HOOF-ZINK®

## E-Z LIQUID

Sire The Need®  
Animal Analysis Associates

# aAa Weeks®

Michael McCaffrey, Analyzer

Mobile: 315-447-4699 • Mike.McCaffrey@aAaWeeks.com  
58 James Street, Homer, NY 13077 • www.aAaWeeks.com

# Markets

## Morrison's Cove Auction

July 22, 2024  
 Grass 120-150  
 Round bales 200  
 Straw bales 3.00

## Wolgemuth Auction

July 22, 2024  
 Alfalfa 190-345  
 Mixed hay 125-450  
 Timothy 195  
 Grass 120-200  
 Straw 125-160  
 Orchard 175-270

## Dewart Auction

Dewart, Pa.  
 July 22, 2024  
 Cattle: 136  
 Slaughter cattle:  
 Steers:  
 Select 165-179  
 Holstein steers:  
 Select 152-168  
 Slaughter cows:  
 PrmWht 65-75% lean 132-149  
 Breakers 75-80% lean 126-135  
 Boners 80-85% lean 126-146  
 Lean 85-90% lean 95-143  
 Slaughter bulls 155-164  
 Feeder cattle:  
 Steers:  
 M/L-1-2 175  
 Heifers:  
 M/L-1-2 110-240  
 Bulls:  
 M/L-1-2 125-205  
 Calves: 421  
 Feeder calves:  
 #1 Hol bulls 535-660  
 #2 Hol bulls 435-550  
 #3 Hol bulls 200-250  
 Utility bulls 40-60  
 Hol heifers 400-600

## Greencastle Livestock

Greencastle, Pa.  
 July 22, 2024  
 Cattle: 609  
 Slaughter cattle:  
 Steers:  
 HiCho & Prm 191-208  
 Choice 185-191  
 Select 177-182  
 Holstein steers:  
 HiCho & Prm 160-168  
 Choice 156-158  
 Select 147-155  
 Heifers:  
 HiCho & Prm 191-199  
 Choice 183-191  
 Slaughter cows:  
 Breakers 75-80% lean 124-138  
 Boners 80-85% lean 113-126  
 Lean 85-90% lean 91-117  
 Slaughter bulls 134-164  
 Feeder cattle:  
 Steers:  
 M/L-1 190-295  
 Holstein steers:  
 L-3 125-230  
 Heifers:  
 M/L-2 190-270  
 Bulls:  
 M/L-1 152.50-305  
 Calves: 345  
 Feeder calves:  
 #1 Hol bulls 590-670  
 #2 Hol bulls 510-590  
 #3 Hol bulls 400-500  
 Utility bulls 30-350  
 #1 Hol heifers 540-600  
 #2 Hol heifers 500-540

## New Holland Auction

New Holland, Pa.  
 July 22, 2024  
 Cattle: 1053  
 Slaughter cattle:  
 Steers:  
 HiCho & Prm 202-212  
 Choice 192-201  
 Select 182-191  
 Holstein steers:  
 Choice 150-158  
 Heifers:  
 HiCho & Prm 195-205  
 Choice 185-194  
 Select 172.50-181  
 Holstein heifers:  
 Choice 145-157.50  
 Slaughter cows:  
 Breakers 75-80% lean 130-147  
 Boners 80-85% lean 110-136  
 Lean 85-90% lean 97.50-137  
 Bulls:  
 1-2 145-197.50  
 Dairy bulls:  
 1-2 122.50-154  
 Calves: 284  
 Feeder calves:  
 #1 Hol bulls 610-710  
 #2 Hol bulls 510-620  
 #3 Hol bulls 400-500

## Hosking Sales

New Berlin, N.Y.  
 July 22, 2024  
 Cattle:  
 Dairy cows 1.09  
 Bone utility 90-1.40  
 Canners & cutters 1.08 & down  
 Easy cows .70 & down  
 Bulls over 1100 lbs. 1.35  
 Feeders:  
 Bulls 1.31-1.41  
 Grassfed organic 1.54-1.57  
 Calves:  
 Bull top 6.00  
 Heifer top 5.75

## Middleburg Auction

Middleburg, Pa.  
 July 23, 2024  
 Cattle: 310  
 Feeder cattle:  
 Holstein calves:  
 70-89 lbs. 4.50-5.25  
 90-110 lbs. 4.00-5.10  
 Feeder cattle:  
 200-300 lbs. 2.00-3.25  
 301-500 lbs. 1.80-2.40  
 501-700 lbs. 1.20-1.90  
 701-900 lbs. 1.00-1.90

Steers:  
 M/L-1 310  
 M/L-2 187-230  
 Holstein heifers:  
 L-3 150-185  
 Heifers:  
 M/L-1 260-285  
 Bulls:  
 M/L-1 172-370  
 M/L-2 195  
 L-3 147-215  
 Slaughter cattle:  
 Steers:  
 HiCho & Prm 195-204  
 Choice 176-197  
 Select 150-176  
 Holstein steers:  
 HiCho & Prm 167-171  
 Choice 159-164  
 Select 132-157  
 Heifers:  
 HiCho & Prm 187-198  
 Choice 175-192  
 Holstein heifers:  
 Choice 143-146  
 Select 147  
 Slaughter cows:  
 PrmWht 65-75% lean 134-138  
 Breakers 75-80% lean 131-136  
 Boners 80-85% lean 128  
 Slaughter dairy cows:  
 PrmWht 65-75% lean 137  
 Breakers 75-80% lean 128-133  
 Boners 80-85% lean 119-134  
 Lean 85-90% lean 25-127  
 Bulls:  
 2-3 134-177  
 Calves: 122  
 Feeder calves:  
 #1 Hol bulls 300-635  
 #2 Hol bulls 450-585  
 #3 Hol bulls 125-575  
 Utility bulls 55-500  
 #1 Hol heifers 335-575  
 #2 Hol heifers 125-425

Morrison's Cove  
 Martinsburg, Pa.  
 July 22, 2024  
 Cattle: 86  
 Steers:  
 Choice 182-190  
 Good 150-170  
 Heifers:  
 Choice 178-185  
 Good 145-155  
 Cows:  
 Util/Commercial 110-140  
 Can/LoCut 70-115  
 Feeder cattle:  
 Steers 150-300  
 Bulls 130-280  
 Heifers 100-160  
 Calves: 86  
 Standard 50-200  
 Hol bulls 400-700  
 Hol heifers 350-550

## New Holland Auction

New Holland, Pa.  
 July 22, 2024  
 Cattle: 1053  
 Slaughter cattle:  
 Steers:  
 HiCho & Prm 202-212  
 Choice 192-201  
 Select 182-191  
 Holstein steers:  
 Choice 150-158  
 Heifers:  
 HiCho & Prm 195-205  
 Choice 185-194  
 Select 172.50-181  
 Holstein heifers:  
 Choice 145-157.50  
 Slaughter cows:  
 Breakers 75-80% lean 130-147  
 Boners 80-85% lean 110-136  
 Lean 85-90% lean 97.50-137  
 Bulls:  
 1-2 145-197.50  
 Dairy bulls:  
 1-2 122.50-154  
 Calves: 284  
 Feeder calves:  
 #1 Hol bulls 610-710  
 #2 Hol bulls 510-620  
 #3 Hol bulls 400-500

## Wyalusing Livestock

Wyalusing, Pa.  
 July 22, 2024  
 Holstein calves:  
 70-89 lbs. 4.50-5.25  
 90-110 lbs. 4.00-5.10  
 Feeder cattle:  
 200-300 lbs. 2.00-3.25  
 301-500 lbs. 1.80-2.40  
 501-700 lbs. 1.20-1.90  
 701-900 lbs. 1.00-1.90

# CDE DAIRY MARKETS & MANAGEMENT UPDATE

All prices — JULY 23, 2024 — except where noted

## Keeping everyone healthy and safe on the farm this summer

The cycling of the seasons constantly brings on variations in the weather and activities on and off the farm. Along with this cycling of weather and activities come health and safety risks to keep in mind. In this article, I share practical information to keep everyone healthy and safe on the farm this summer.

**Heat-related illnesses:** The past few weeks have been really hot and when the weather is that hot, heat-related illnesses such as heat rash, heat exhaustion, and heat stroke are a concern. Steps to prevent heat-related illnesses include drinking plenty of water (including with electrolytes) before and during work, taking breaks in a shaded area, pacing the work, gradually adjusting to working in the heat, and adjusting the work schedule to limit being outside during the hottest part of the day. If you or someone else experience mild symptoms of heat related illness (dizziness, thirst, heavy sweating, nausea, and weakness), move to a cooler area, loosen clothing, and sip cold water. If you or someone else experience acute symptoms indicative of a heat stroke (confusion, dizziness, and loss of consciousness), call 911 immediately and move to a cooler area, loosen clothing and remove extra layers, and cool with water or ice. For more information on heat-related illnesses: <https://extension.psu.edu/heat-illness-and-agriculture>

**Tractor rollovers and Rollbar retrofits:** Tractor and machinery incidents continue to be the leading cause of fatalities in Pennsylvania. The most effective way to reduce the risk of a tractor rollover is by using a tractor with a rollover protection structure (ROPS) and wearing the seat belt. This strategy is 99% effective in preventing injury or death when an overturn occurs. Financial support may be available for tractors that can be retrofitted with a ROPS and a seatbelt. For more information, visit this website: <https://www.ropstr4u.org/> or contact Peggy Newel: [png1@psu.edu](mailto:png1@psu.edu) or (814) 865-7685.

**Keeping youth safe on the farm safe:** Summers are not only busy on the farm, but they also tend to be the time of year when children are on the farm more since school is out. Research has found that more youth die working in agriculture than in all other industries combined. Injuries and fatalities tend to happen when the work assigned to youth does not match their physical and emotional abilities. The Agricultural Youth Working guidelines cover common tasks on farms and include information to determine youth's readiness to perform the task safely, ways to safely assign and supervise youth through these tasks. You can view the guidelines at this website: [cultivatesafety.org/work/](https://cultivatesafety.org/work/). The National Safe Tractor and Machinery Operation Program (NSTMOP) is a great program for youth to develop safe tractor and machinery operation skills. In addition, this training is connected to the US Department of Labor certificate, which is required for youth aged 14 and 15 to be legally allowed to operate tractors and machinery on a non-family member farm. To find out more about the program, email [nstmop@psu.edu](mailto:nstmop@psu.edu) or call (814) 865-4582. For more ideas on how to keep youth on the farm safe, take a look at this article: <https://extension.psu.edu/when-and-how-to-safely-involve-children-in-farm-tasks>

By FLORENCE BECOT  
 Florence.becot@psu.edu  
 814-865-1783  
 Penn State Professor in  
 Ag Safety and Health



**Ag safety and health information and free safety items during Ag Progress Days:** The Penn State Ag Safety and Health team will be at Ag Progress Days (August 13th-15th) in the tent located at the corner of W. 8th Street and Demo Alley. Stop by for our ATV safety and agricultural rescue demonstrations and the Stop the Bleed training (kit offered at the end of the training while supplies last). Also stop by to receive free safety items including high visibility shirts or vests for the children, Slow Moving Vehicle (SMV) emblems for farm equipment, and flags for pony carts (while supplies last). For more information about the schedule, visit: <https://agsci.psu.edu/apd/events>

**Contacting the Penn State Ag Safety and Health team:** If you ever have any questions related to safety and health, don't hesitate to reach out at [AgSafety@psu.edu](mailto:AgSafety@psu.edu) or 814-865-1783. You can also visit our website: <https://extension.psu.edu/business-and-operations/farm-safety>

Prices change daily. This market information is an example for educational purposes. The market data shown below are compiled weekly by Farmshine, via CME & USDA reports.

## CME DAILY FUTURES & OPTIONS TRADING — JULY 23, 2024 AT THE CLOSE

	JUL-24	AUG-24	SEP-24	OCT-24	NOV-24	DEC-24	JAN-25	FEB-25	MAR-25	APR-25	MAY-25	JUN-25	TREND											
<b>CLASS III MILK FUTURES (\$/CWT)</b> vs. wk ago: Jul24 up \$0.06; Aug-Oct24 up \$0.60-0.90; Nov24-Jan25 up \$0.10-0.30; Feb-Mar25 up \$0.05; Apr-Jun25 weak-\$0.10 lower. 12-Month Avg. 19.46 ↑↑	19.85	20.42	21.28	21.16	20.44	19.63	18.90	18.58	18.45	18.28	18.25	18.24	↑↑											
<b>CLASS IV MILK FUTURES (\$/CWT)</b> vs. wk ago: Board see-sawed by nickels and dimes in neatly alternating 1 to 3 month increments down-up-down-up-down for net no change. 12-Month Avg. 20.94NC	21.43	21.40	21.65	21.69	21.40	21.00	20.60	20.65	20.56	20.49	20.36	20.10	MIXED											
<b>MILK BASIS (MAILBOX minus CLASS 3 \$/CWT) 2018-23 AVG FOR NORTHEAST &amp; MIDEAST STATES OF PA, NY, NEW ENGL., OH vs. NAT'L AVERAGE - YOUR INDIVIDUAL BASIS WILL VARY</b>																								
Mailbox	18.65	18.35	18.62	18.41	19.27	18.75	20.20	19.76	20.58	20.17	20.25	19.64	19.22	18.75	18.82	18.25	18.96	18.48	18.64	18.27	18.52	18.15	18.68	18.38
Class III	18.16	18.16	17.59	17.59	17.60	17.60	18.72	18.72	19.07	19.07	17.30	17.30	16.81	16.81	16.03	16.03	16.98	16.98	17.31	17.31	17.33	17.33	18.16	18.16
BASIS	0.49	0.19	1.03	0.82	1.67	1.15	1.48	1.04	1.51	1.10	2.95	2.34	2.41	1.94	2.79	2.22	1.98	1.50	1.33	0.96	1.19	0.82	0.52	0.22

	SEP-24	DEC-24	MAR-25	MAY-25	JUL-25	SEP-25	DEC-25	MAR-26	MAY-26	JUL-26	SEP-26	DEC-26	TREND
<b>CORN FUTURES (\$/BU)</b>	4.176	4.172	4.312	4.412	4.480	4.494	4.552	4.660	4.736	4.754	4.570	4.562	↑↑
<b>SOYMEAL FUTURES (\$/TON)</b>	343.5	325.7	317.4	319.9	320.7	321.8	324.5	327.7	328.3	328.0	328.4	330.6	↑↑

	AUG-24	SEP-24	OCT-24	DEC-24	JAN-25	MAR-25	MAY-25	JUL-25	AUG-25	SEP-25	OCT-25	DEC-25	TREND					
<b>U.S. AVG PREMIUM ALFALFA &amp; ALFALFA/GRASS HAY 20-22% CP</b> - Source: USDA Monthly National Dairy Comprehensive Report	277.00	290.00	292.86	244.27	254.92	243.50	238.50	217.82	240.41	231.70	254.85	224.50	205.02	220.17	175.00	*JUN-24	*211.69	↑↑

DMC OFFICIAL GROSS MARGINS per cwt(USDA All-Milk, com, alfalfa & Ill. soybean, feed for ALL CLASSES of dairy cattle on farm) Updated with NEW prem. alfalfa feed cost																		
DMC	JAN-23	FEB-23	MAR-23	APR-23	MAY-23	JUN-23	JUL-23	AUG-23	SEP-23	OCT-23	NOV-23	DEC-23	JAN-24	FEB-24	MAR-24	APR-24	*MAY-24	
ALL MILK	7.94	6.19	6.08	5.84	4.83	3.65	3.52	6.46	8.44	9.44	9.58	8.44	8.48	9.44	9.65	9.60	*10.52	↑↑
FEED \$	14.94	15.16	15.41	15.02	14.86	14.47	14.25	13.88	13.24	12.56	12.16	12.12	12.16	11.62	11.16	10.90	11.48	↑↑

DAIRY COMMODITIES - GLOBAL BIWEEKLY Internet Auction (\$/LB) 07/16/24													
Weighted Avg. 1 to 6 mo. FORWARD CONTRACTS per metric ton converted to \$/LB	*U.S. Weekly NDCPSR is averaged for the Month & used in FMMO formulas.												
NEXT GDT AUCTION 08/06/24	NEW! USDA *MAR-24* ALL-MILK BF *MAILBOX												
ALL-PRODUCT INDEX 1.7410 ↑↑ 0.4%	FL \$25.10 3.93 \$24.11												
MILKFAT (AMF) 3.0690 ↑↑ 4.0%	SE \$25.50 4.04 \$23.45												
BUTTERMILK POWDER N/A N/A	APP \$25.10 4.12 \$22.22												
LACTOSE 0.3593 ↓↓ 0.6%	PAwestern PA only \$22.19												
WHOLE POWDER (WMP) 1.4256 ↓↓ 1.6%	NENG \$22.80 4.35 \$22.08												
	NY \$22.40 4.28 \$21.85												
	Pleast \$21.70 4.19 \$21.33												
	IN \$22.20 4.16 \$21.26												
	OH \$21.70 4.12 \$20.98												
	MI \$21.30 4.22 \$20.14												
	IL \$20.70 4.28 \$20.07												
	US \$20.70 4.28 \$19.98												
	MO N/A N/A \$19.77												
	WAOR \$22.30 4.38 \$19.71												
	CA \$20.20 4.23 \$19.50												
	TX \$21.20 4.35 \$19.27												
	NEKS \$20.00 4.35 \$19.01												
	WI \$19.10 4.24 \$18.91												
	MN \$19.50 4.55 \$18.66												
	IA \$19.10 4.51 \$18.44												
	NM \$19.50 4.07 \$18.26												
	UT \$20.80 4.22 N/A												
	ID \$20.50 4.45 N/A												
	SD \$20.20 4.76 N/A												

ANNOUNCED FEDERAL ORDER PRICES (\$/CWT) NASS ALL-MILK													
*CL I ADV↑↑	CL II↑↑	CL III↑↑	CL IV↑↑	ALL-MILK-U.S.	ALL-MILK-PA	CURRENT FEDERAL ORDER VALUES (\$/LB) * = *NEW							
*21.32(AUG)						WEIGHTED AVG. 4-WK JUNE 3-29, 2024							
21.11						PRODUCT VALUE MAKEALLOW NET							
16.62						JUNE 2024							
						COMPONENTS							
						CHEESE 1.9962 0.2003 1.7959 ↑↑ PROT 2.0546↑↑							
						BUTTER 3.0983 0.1715 2.9268 ↑↑ B.FAT 3.5444↑↑							
						NFD 1.1770 0.1678 1.0092 ↑↑ N.FAT 0.9991↑↑							
						DRYWHEY 0.4249 0.1991 0.2258 ↑↑ OTHER 0.2326↑↑							

U.S. AVG. BRED COWS & HEIFERS (3rd trimester) per head as reported by USDA Monthly National Dairy Comprehensive Report														
MAY-23	JUN-23	JUL-23	AUG-23	SEP-23	OCT-23	NOV-23	DEC-23	JAN-24	FEB-24	MAR-24	APR-24	MAY-24	*JUN-24	
1400	1559	1502	1540	1500	1741	2108	N/A	1635	N/A	N/A	N/A	2115	*2016	↓↓
U.S. AVG. MILKING COWS per head as reported by USDA Monthly National Dairy Comprehensive Report														
1469	1792	1615	1634	1643	1830	1988	N/A	1792	N/A	N/A	2120	2254	*1624	↓↓

CATTLE - DAIRY PURPOSES(\$/HD) USDA and other East and Midwest auction reports combined 4-week rolling average as of July 6, 2024													
MILK COWS (NASS) U.S. Avg.	HEIFERS FRESH	Springing	Bred	Beef x	OPEN: 300-600 lbs	Beef X 600-900 lbs	Beef X 900-1100 lbs	BULLS (800-1300lbs)					
\$2120 APR-24 ↑↑ \$1890 JAN-24	2850	2450	1900	2200	900	1500	1550	N/A	1800	1600			
\$1720 APR-23 NC \$1720 JAN-23	1550	1550	1525	1000	575	N/A	1000	N/A	1000	1200			

PA Auction Markets July 18-23, 2024													
CULL MARKET COWS (\$/CWT LIVEWEIGHT)													
Premium White	Breakers	Boners	Lean	FED STEERS (\$/CWT LIVE)									
140.10↑↑	131.50↑↑	127.35↑↑		Choice & Prime 1250-1550 lb									
				Holstein ↑↑ 160.00↑↑									
				Beef-X-Dairy ↑↑ 189.25↑↑									
				BULL CALVES: No. 1 & 2, 90-130 lbs</									

# Classifieds

"Say you saw it in FARM SHINE"

## 1 Services

### EBERLY HOOF TRIMMING.

Comfortable cows = productive cows. Willing to travel, dates available. 717-314-4958. Lebanon, Pa.

**FARM INSURANCE:** barns, equipment, hay and grain storage, Workers' Compensation, farm stands and stores, vehicles and farm homes. N.Y., Pa. and Va. Call Alec Pandaleon at 845-242-0113.

**REPAIRING TRACTORS** and farm machinery. Complete tractor overhauls and engine repair, dealer for quality aftermarket parts. Tiger and granite lights. Har-sue Repair, New Holland, Pa. 717-355-0715.

**AG PHOTOGRAPHER** - senior, family, natural cattle portraits. Sales, herd dispersals and ag event photography coverage and albums. Based in Lancaster, Pa. A Farmgirl's Dream Photography. 717-824-1320.

**BALING SERVICES - CUSTOM** 3x3 and round baling, along with individual wrapping. Out of southern Lancaster, Pa. 717-826-3775.

**BOB & MILLIE'S DISCOUNT** signs. The cheapest guys in town. Free delivery on all sign orders. bobthesignman@yahoo.com. Real Estate-Construction-Banners-Yard Signs-Decals-Magnetic Signs-End of Lane Farm Signs. appletreesigns.com. 410-708-1341.

**COMPOSTECH LLC. IS A** local Honey Brook business, making and selling organic compost at \$30 per cubic yard. Call Dave at 610-441-5154 to schedule a pick up. Also taking horse manure for free, must be dropped off.

**LOWER SCC & IMPROVE** conception. Highly effective,

35 years of time tested results and satisfied dairymen nationwide. No withholding ever feed additive, low cost. Call AG, Inc. today. 920-650-1631. www.alphageneticsinc.com.

**DAIRY PRODUCER** - would you like to lower SCC and mastitis rates, provide milking training, breach the language barrier and improve parlor performance? Call Adolph Dossman at 240-286-8996.

**INNOVATIVE DAIRY** Nutrition - specializing in forage planning to maximize production and optimize herd health through advanced nutrition. To improve your profits, contact Matt at 717-729-4530

**REDUCED PRODUCTION?** Heat stress? High SCC? Scours? Proven effective solutions to your herd's health needs, no withholding. Call the Dairyman's Helper. 800-829-7512.

**CUSTOM COLLECTING** - Call for prices. 301-491-3154. Triple-Hil Sires.

**RELIEF MILKING**-farm siting. Tie stall or parlor. Feeding and young stock care. References available. Adrian Horning 717-466-9099. South-Central, Pa.

**KANN'S MILKING SERVICE** Franklin & Cumberland Co. 30 years experience, references available. Ryan L. Kann, 717-816-1920.

**BARN FULL? WITH 8+** years experience raising heifers, I am the solution to your problem. Space available now. Call today to discuss this opportunity. 717-860-8867.

**CUSTOM HEIFER RAISING.** Weaned calves to calving. 19 years experience. Modern housing, free stalls, AI breeding, TMR, monthly

vet visits. Lebanon Co., Pa. 610-451-3006.

**GARDNER CUSTOM HEIFER** raising. 40 years experience. TMR in fenceline feeders with lockups, dairy veterinarian manages, adolescent to springers, competitive prices. 540-871-0246, dlggar@aol.com, gardnerheifers.com.

**CUSTOM HEIFER RAISING.** 300-400 head capacity. AI breeding, hauling available. We do not have state of the art facilities but are committed to an accelerated feeding program. Call for pricing. Reach us at 240-291-0286.

**HEIFER RAISING SERVICES** offering full health care program, excellent AI breeding program, activity monitor collars, balance ration, pasture for older heifers. Lancaster Co. 717-940-9435.

**CUSTOM HEIFER RAISING.** Good quality forages. Minerals and hay in TMR. Room for 150-200 head. Troy area. 570-220-4542.

**HEIFER BOARDING** - Sand bedded freestalls. Corn silage haylage and hay included. \$2/hd/day. 607-382-3633.

**HORSE BOARDING** available, Willow Street, Pa. area, Lanc. Co. 717-380-7612.

**ADAM'S HOOF TRIMMING.** 22 years of experience. 717-813-1358.

**MID-ATLANTIC HOOF TRIMMING** - providing farmers professional hoof care in Maryland, Virginia, Pennsylvania and surrounding states. Call Mikey Barton at 518-567-8046 today for inquiries/scheduling.

**HASTINGS HOOF TRIMMING** is looking for clients in Pa., N.Y. and Ohio. Call or text 315-283-2717 for a quote.

**CATTLE HOOF TRIMMING,** Western, Pa. Stand up chute, over 10 years in business. Looking for new clients. 814-279-7932, ask for Russell.

**TSHUDY'S HOOF TRIMMING.** Quarryville, Pa. Serving Southern Lancaster, Chester and York counties since 2003. \$11/cow, free wraps. Hydraulic tilt table. 717-917-8715.

**STAND UP HOOF TRIMMING.** Two man trimming crew, excellent cattle flow. Serving South Central Pa. and surrounding counties. Will travel for large numbers. Call Matt Weaver at 814-793-9966.

**HOOF TRIMMING Service.** 717-755-0770.

**PHILBRICK'S HOOF TRIMMING** serving western and central Pennsylvania, western New York and eastern Ohio. 814-720-0010.

**HOOF TRIMMING** - Garrett Co., Md. Tilt table. Willing to travel distances for large groups/herds. \$10/cow. Trained at Dairyland Hoof Care, Wis. Call 301-616-2195.

**HOOF TRIMMING SERVICE** - providing quality service for large and small dairy and beef herds. \$10 per cow. Graduate of Hoof Care Institute. Stand up chute. 315-573-6742.

**MACIK HOOF TRIMMING** - Beef and dairy cattle. Hydraulic tilt table. Serving Western PA, Eastern OH, Northern WV. Phone 724-345-8501.

**PROF. HOOF TRIMMING** - RSW Farms LLC. Hydraulic table, competitive rates, serving MD/PA/NY. Contact Ryan 518-935-7704 or RSWFarms@yahoo.com.

**MIKE'S HOOF TRIMMING** - Since 1988. Hydraulic table. 814-997-9021.

**PROF. HOOF TRIMMING** - call for more info/available dates. 570-690-1017.

**SHUMAN'S HOOF CARE** - Serving dairies in Northeastern & Northcentral Penna. and the Finger Lakes region of N.Y. Call Tom, 570-418-1684.

**CORRECTIVE HOOF TRIMMING** - New Tuffy -tilt table.

Cow comfort, professional work. Call Sam Beiler 717-222-6180.

**NEED YOUR COWS** clipped? Call 717-768-8345 ext 1.

**STRUGGLING WITH MICE** and rats? Try First Strike. Oregon Ag LLC. Call 717-656-0067.

**DEAD ANIMAL REMOVAL.** Call Mike at 717-855-5503.

**DEAD ANIMAL REMOVAL.** Removal of dead farm animals. 717-228-9500. M-F 8-4, Sat. 8-11 or text.

**LIVESTOCK HAULING** Local/ long distance. Pa., N.Y., Ohio, Va. 814-592-2543.

**SILO DEMOLITION.** 717-786-6063.

**HARVESTORE SILO REPAIRS,** extensions, and roof replacements. Call us at 717-786-6063.

**NEED YOUR EQUIPMENT,** building or house pressure washed? We have the equipment to do the job. Call us at 717-644-6295.

**DAIRY SERVICE TECH** - servicing all brands of dairy equipment. South central, Pa. Wes Sollenberger, 814-505-6304.

**CUSTOM COMBINING** services. Well maintained equipment. Reasonable prices. Call 315-573-6742 for more information.

**RESTORING GRANDPA'S** old tractor doesn't have to cost an arm and a leg! Full service repairs and restorations. Agriculture and industrial repairs. York Co. 717-368-1354.

**FARM MACHINERY REPAIRS,** NH small square baler parts, Discbines, Haybines, rakes, feed mixers, discs (new blades), forage harvesters and more. 607-243-5896.

**DISCBINE DOCTOR** - Repairing all makes. Buying & selling. After market cutter bar, bearings, or NH/JD/ Kuhn and used parts. Call ahead 717-768-7542.

**SERVICE DONE ON ALL** brands of fence energizers and battery chargers. Call Sensenig's Electronic Repair 717-445-9905 for your repair needs.

## 3 Dairy Equipment

**1500 GAL. DAIRY COOL** tank, model DKF, serial #28463, dual compressors. \$5000. Lancaster, KY. 859-608-9745. (8/16)

**WESTFALIA SURGE** autotandem milking parlor, 2x4 stalls, bolt down installation. 5hp variable speed vacuum pump, plate cooler. Everything included, good condition. Can see operate. \$8000 OBO. 570-809-6567. (8/16)

**ZIMMERMAN** self-catching cattle chute. Side opening. \$1000 OBO. 301-714-0992

**MUELLER PLATE COOLER;** Westfalia vacuum pump, variable speed, oilless; Sutorbilt vacuum pump, 10 hp, oilless. 814-931-5860.

**SOLAR MILK TANKS.** Surge pipeline system. Dumping station, bucket units. 814-274-8354. (8/2)

**6 DELAVAL DELPRO** MU480 automatic takeoff units complete and DeLaval receiver jar with good pump. 717-372-0566. (8/2)

**DOWN COW HYDRO** therapy float tank, \$25/day. Blairsville, Pa. 724-309-1990.

**USED MILK TANKS - 400** gal. Sunset; 800 gal. Mueller OH; 900 gal. Mueller OH; 1000 gal. Milkeeper, flat top (storage). T.H. Horning. 717-438-3104.

**4' X 6' COW MATS. GOOD** mat for the money and easy to install. \$80 each, including hardware. Call 717-304-6684.

**GUTTER GRATES FOR** tiestall barns. Innovative design prevents hoof injuries. Call for more information and current pricing. 717-464-6476.

## BRUBACKER'S QUALITY DAIRY SALES, LLC

10 BROWN ROAD, SHIPPENSBURG, PA

Thursday, August 22 @ 7:15 P.M.  
**Special Dairy Cow & Heifer Sale**

- ★ We are expecting a good selection of fresh and fancy, 2 and 3 yr. olds out of local overstocked herds and heifer growers. Mostly A.I. sired with several good Registered cows, most on test w/low SCC and milking well!
- ★ Also a nice selection of heifers from healthy calves to close springers including several Registered!
- ★ Several breeding age bulls out of good cow families with a lot of milk in the pedigrees!

**NOTE:** Looking for a complete herd or just a few quality dairy cows? Come spend the evening with us! We're getting a great selection of dairy cattle right off the farm. All cattle vet checked and vaccinated. Trucking available.

**More quality consignments are still being accepted!!  
Top Quality cattle are in demand!**

**Can't make the sale? You can now participate online at Cowbuyer.com.**  
For on-line questions, call Katie Shultz 717-543-7883.

Manager/Auctioneers  
Jason Brubacker Lic. AU5608  
717-729-0173

Darryl Jones Lic. AU5194  
717-226-0776



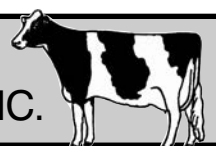
Sale Barn  
Ivan Brubacker  
717-414-6657

Pedigrees  
Art Kling

Free ice cream

NEW HOLLAND SALES STABLES, INC.

Free ice cream



Located 12 Miles East of Lancaster, PA. Just Off Rt. 23, New Holland

## DAIRY COW & HEIFER SALE

WEDNESDAY, JULY 31<sup>ST</sup> • 10:30 A.M.

### Special Mentions:

- 14 big, fancy Holstein heifers due sale time 'til fall from Western Pa. herd. 12 are Reg. w/pedigrees. Two grades.
- Six Reg. Brown Swiss springing heifers from Northern Pa.
- Reg. service-age Holstein bull, born 2-3-23. Sire Lar-Crest Captivating. Dam 4 yr. 341d, 29,350 M, 5.8 BF, 3.8 Pro. Already servicing cows and heifers.

**Consignors: Please send all info with truckers for the catalog.**

**For more information, contact dairy reps:**

Aaron Martin, 717-445-4825 (home); Bill Hough, 973-224-0204 (cell).

*Thank you - N.H.S.S.*

**UPCOMING SPECIAL SALE:**

**Friday, August 2nd, starting 6 p.m. Special feeder cattle sale.**

Sale Managed By  
**New Holland Sales Stables, Inc.**

Barn 717-354-4341 Fax 717-355-0706 • David Kolb, Mgr. 61L



## 16 Fencing

**TIMELESS FENCING** - The post is the insulator. Versatile design is self-insulating and easy to install for sheep, goats, cattle & horses. Allegheny Meadows. 814-285-1541.

## 17 Silos

**SILO UNLOADER WINCH;** Harvestore silo sheets. 717-363-6741.

**USED A.O. SMITH** model 1250 Slurry Pump with agitation nozzle and load out line. 717-463-9731.

**SILO DEMOLITION.** Contact Beiler Silos. Call 570-745-3574.

**HARVESTORE SILO ROOFS,** affordable white or stainless. Solve spoilage. Sheet replacement, silo demolition. Parts and repairs on Harvestore and stave silos. 717-517-2080.

**HARVESTORE SILO REPAIRS,** also demolition and removal. Used replacement blue or white silo roofs, door frames, doors, lids, breather bags. Installation available. 717-768-0452.

**BEILER SILOS - SILO PARTS,** sales and service. New and used silos. Shotcrete relining. Foundation repair with Shotcrete. Tear down and rebuild. Silo doors made to order. 20 years experience. Serving Lycoming and surrounding Co. Jersey Shore, Pa. 570-745-3574.

**I BUY USED SLURRY-STORES.** 315-404-6721 or 315-495-6506.

**SILO DOORS,** galvanized steps and latches, poly door panels cut to size for all types of silos. Quality products are always a good investment. Meadow Springs Farm, Gordonville, Pa. Sales brochures and quotes call J. Elmer 717-768-3337 ext.1.

**RE-BUILT SILOS,** New or used, relines, parts and repairs. Call SR Silos 717-527-4103.

**S & S SILO SERVICE** - We erect silos, repair silos with shotcrete, repair concrete walls, stone walls, and foundations with shotcrete. Serving the shotcrete and silo industry for 25 years. 610-273-3993.

**MANUFACTURERS** of silo doors and hardware. Double thick tongue and groove cedar poly and plywood doors. Hardware is powder coated. Agri-Door. Call 717-949-2034.

## 19 Real Estate

**VACATION OR** year round property near Route 80/Route 15. Beautiful views, near State Gamelands. Natural gas area. Something for the whole family. 717-856-2024.

**THE GET-R-DONE REALTOR.** Rodney Rice, 717-729-9501. 50 years serving farmers selling, buying, auctioning. Landfarmrec-JAK Real Estate. 717-753-5510.

**TO BUY/SELL REAL ESTATE** in Pa. call Thomas Hershey at 610-209-7096. Hershey Farm Agency, Inc., HersheyAuctionLLC.com. 800-880-3831.

**BEILER-CAMPBELL** Realtors and Auction Services, Farm and Land Division. Are you looking to purchase or sell a property in Pa. or Md. Call Chris Taylor, office mgr., 888-786-8715 for an auctioneer or realtor.ctaylorfarms.com.

## 20 Wanted

**OLD DAIRY FARM SIGNS** in good shape, Land-O'Lakes, Cloverland, M&V, etc. 570-665-0621. (8/2)

**HOLSTEIN, JERSEY** and/or Ho Jo's freestall dairy milking herds/groups and complete heifer programs for expansion. All sizes/types needed. 570-504-4443. (12/6)

**BUYING OLD ISSUES OF** Holstein World, Jersey, Brown Swiss, etc. (all other dairy cattle breeds) magazines, sale catalogs and sire directories. 716-255-5625.

**LOOKING FOR REG.** springing heifers, fresh, 2 and 3 year olds, preferably freestall cows, to expand my herd. 814-386-0609. (9/27)

**BUYING HARVESTORE** silos & Slurrystores. Call 717-517-2080.

**I AM STILL LOOKING FOR** used books and publications about dairy farming, printed early to late 20th century. Interested in all farming related topics. Paying cash. Phone Owen Backus, 608-479-0811.

**I BUY TRUCKER HAT** collections. 215-896-5609.

## 21 Opportunities Wanted

**EXPERIENCED PERSON** looking for farm job or dairy barn to rent. 814-442-5782.

**EXPERIENCED PERSON** seeking full time employment on dairy, beef or horse farm in Western Pa. or Western Md. Some type of housing needed. 717-487-5170.

**SEEKING 30+ ACRES OF** pasture/field near NY/PA border. 607-288-0113. (8/2)

**SEEKING WORK ON** family farm with small house. Most any area. (West Va., please call). 717-816-9693.

**YOUNG FARMER** looking for a dairy farm to rent. Ideally rent to own situation in Pa. or Md. 717-824-1320.

## 22 Help Wanted

**HELP WANTED ON DAIRY** farm in Mifflin Co., Pa. Call for more information. 717-899-6068. (8/16)

**200 COW FAMILY FARM** in Pylesville, MD, is looking for general help on farm. Full time or part time, house available. 443-617-2490.

## 24 Seeds

**ALFALFA, GRASS MIXES,** oats and sorghum. Hefty brand and Augusta seed corn. Jacobsen GT soybeans. Leabrook Ag, call us at 717-898-9576.

**NEED SEED OATS?** We can obtain almost any variety. Also publish quarterly oat marketing newsletter. \$12/year. J.C. Goss, Box 312, Hurley, MO 65675, 417-708-7860.

**KING'S AGRISEEDS,** feeding your farm's future through high energy forages, and soil building cover crops. Lancaster, Pa. 717-687-6224, info@kingsagri.com, www.KingsAgriSeeds.com.

**CORN SEED. PRICING** starting at \$129/bag (before discounts). De Dell Seeds, the leaders in Non-GMO corn. 519-264-CORN.

**ALFALFA, CORN, SOYBEANS** and more! Call us for all of your crop needs. Growmark FS-Eighty Four. 724-222-4303, www.growmarkfs.com.

**TRY THE NEW WINNER 2015** World Forage Analysis Superbowl - Alforex Hi-Gest 360 Alfalfa, cutting edge digestibility. Hess Farm Supply 717-354-9492.

**SEED CORN** - Partners brand, Mid-Atlantic, Prairie Hybrids. Lots of customer satisfaction. Dairyland hybrid alfalfa's quality yield digestibility. Oregon AG, 717-656-0067.

**HUBNER SEEDS** - Alfalfa, Corn, Soybeans, call Merle Stoltzfus. 717-224-0700.

**APPLY AGROWSIL TODAY** Quick and long lasting PH increase, increased yields, soil nutrient release, disease and stress tolerance, and drought tolerance. 1-800-850-0527.

## 25 Miscellaneous

**MASTER AI OF DAIRY CATTLE** at Vermont State Univ., Randolph, Vt. Learn bovine cycles, AI techniques, and palpation. Two-day training on Sept 6-7. Register: https://cewd.vtc.edu/agriculture-and-food-systems/food-systems-trainings/.

**CUSTOM MADE CLEAR** poly carbon doors, including custom manufacturing and repair. Also, hot beds and little greenhouses, stainless steel water troughs, horse barn grills, gates and doors. Sunnyside Welding, Manheim, Pa. 717-361-8853, x4.

**STOP FLIES. GREAT** products. Fly parasite plans. Cedar solar traps (the best). Zapper that just keeps zapping. www.dairyflyparasites.com. 888-771-3276. Useful Farm Products.

**LOOKING TO GET RID** of insects? Buy bluebird or tree swallow houses. Plus more. 717-529-2326, ext. 1.

**CLEANING OUT YOUR** attic? We'll take any magazines, newspaper, books, etc. for old man to shred for horse bedding. Call now. 717-529-2326, ext. 1.

**SEE FARMING IN N.Y.** through the eyes of an 11 year old. Visit Youtube and search "4th Gen Dairy Farmer" for videos. Call 716-474-1705 for more information.

**HORSE, DONKEY AND** calf blankets. Reasonably priced. Dealers welcome. Call 717-361-4474.

**POLY SILO DOORS** - Steel horse hitches; pine shavings; pine bedding pellets; Meadow Springs Farm, Gordonville, Pa. 717-768-3337, ext. 1.

**PAINTED MILK CANS** - farm scenes \$200 or have one custom painted with cows, horses or any family pet. Carroll County, Md. 410-259-1276.

**OLD AERIAL PHOTOS** of your farm or home dating back to 1963. Nathan Lewis 888-402-6901 or vintageaerial.com.

## 27 Livestock

**28 MONTH OLD PURE-BRED** Hereford heifer. She's due in September-October, bred to Hereford bull. \$1600. 570-380-3047.

**BORN THIS SPRING,** would make good breeders: 1 billy goat, 1 ram. Also, Ancona ducks for sale. 570-768-8022. (8/2)

**ANGUS BEEF, READY FOR** slaughter. 570-488-6596.



**King**  
Bacterial Digestant Blend

Manure Pits, Feed Lots, Lagoons, Compost Heaps

Converting Organic Waste into Water and CO<sub>2</sub>

**Protect Ground Water**

**Reduce Odor**

**Expand Pit Capacity**

**Increase Fertilizer Value**

717-742-5025



www.kingbdb.com



**Dealer Inquiries Welcome**

**We Ship Parts**

**ALL PLASTIC CONVEYORS AVAILABLE**  
Good for Under Silo Unloaders Or Any Wet Place, In 18", 24" & 30"  
Also Available: Standard Wooden Conveyors And Feeders  
In Business Since 1965  
**717-336-2244**  
**RISSLER CONVEYORS, LLC**

**WHOLE SHELLED CORN**

WHOLE COTTONSEED • CORN • 48% SOYBEAN MEAL • ROASTED SOYBEANS • CANOLA MEAL • LINSEED MEAL

**TRIPLE • M • FARMS**

**Custom Feed Mfg.**

WE MIX FEED ACCORDING TO CUSTOMER AND NUTRITIONIST FORMULAS

Also Available:  
**BULK COMMODITIES**

Call Us At:  
**(717) 272-3225**

MINERALS • NON-GMO


TURBO MEAL • AminOleic • BLOOD MEAL • BEET PULP • FATS

**3/32" FINE GROUND CORN**

FINE GROUND *Wood Bedding*

**Dry, Absorbent BEDDING For Sale**

14 yd, 30 yd, and 110 yd loads  
Call for Pricing



Buy in bulk and save!

**BEILER INDUSTRIES** **717-768-7667**


**Sell your Holsteins through PHA!**

- Wanted: 200/month! Reg. or sire ID'd open heifers, ready to breed. Must be negative Leucosis, BVD & Neospora. Call today!
- Wanted: 400-700 lb. sire ID Holstein heifers.
- Attention juniors and parents: If you are still looking for a special show calf, we know where they are.

Upcoming sale:

- September 6, 2024 - "Know What You Buy" Heifer Sale, Middletown, Pa.
- October 26, 2024 - Nittany Lion Fall Classic. Selections underway.

**PA Holstein Sales**



*Herd dispersals done right by trusted sales management that is licensed and bonded!*

Contact: David J. Lentz, 717-329-9202, djl1018@pa.net or PHA office, 814-234-0364. Email: director@paholsteins.com

**Zimmermans**

**Glasslined Storage**  
Oakland Mills, PA  
36 Yrs. Experience • Silos & Tanks  
**717-463-9731**  
www.silosandtanks.com

Pre-Owned Slurrystores® and Harvestores® in Inventory - Ready to be built






**COMPARE OUR PRICES & QUALITY**



**E. RISSLER MFG.**  
Spira Mixers

**Quality Parts, Inc.**  
Harvestore® Aftermarket Parts



HOT-DIP GALVANIZED

Rebuilt Harvestore® Unloaders In Stock - installed with a 2 year warranty  
**WE SERVICE WHAT WE SELL**

SERVICE DEPOT

Alvin Eberly Harrisonburg, Va. 540-820-0818	Norwain Acres Orrville, Ohio 330-621-1276	Zimmermans Oakland Mills, Pa. 717-463-9731
---	---	--

Zimmermans is not affiliated with CST Industries, Inc.

# Morrissey Insurance Employees

*Celebrate*

## National Ice Cream Month!

*Get the Scoop on our favorite flavors!*



Bernie  
"Chocolate!"



Craig  
"Butter Pecan!"



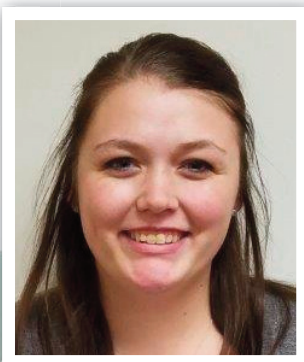
Tim  
"Chocolate!"



Jason  
"Black Raspberry!"



Barb  
"Mint Chocolate Chip!"



Becky  
"Chocolate Chip Cookie Dough!"



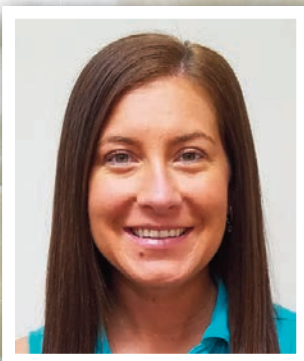
Katie  
"Mint Chocolate Chip!"



LeAnne  
"Chocolate Marshmallow!"



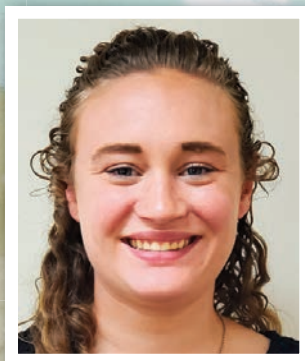
Suzette  
"Mint Chip or Coconut!"



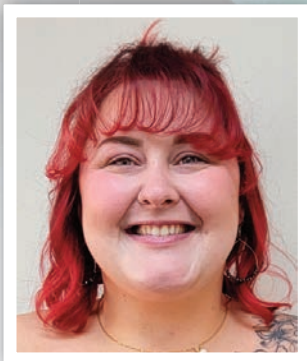
Nicole  
"Mint Chocolate Chip!"



Michele  
"Black Raspberry!"



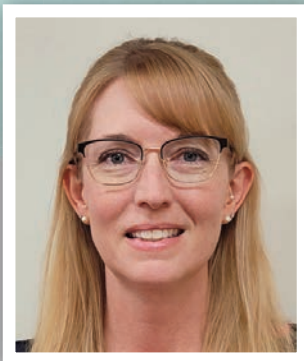
Madison  
"Salted Caramel!"



Heather  
"Strawberry!"



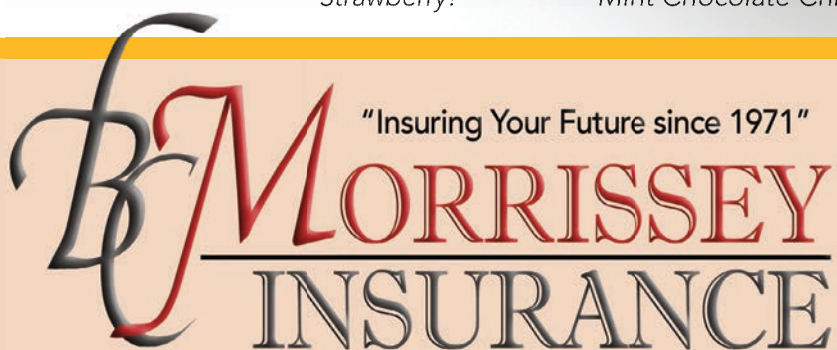
Kayla  
"Mint Chocolate Chip!"



Beth  
"Chocolate Chip Cookie Dough!"



Jeremy  
"Wayhar's Salted Caramel Pretzel!"



890 N. Reading Road  
Ephrata, PA 17522  
[www.insuringyourfuture.com](http://www.insuringyourfuture.com)  
**800-422-8335**



**LIKE NOTHING ELSE**

# SILO-KING®

SCAN THE QR CODE TO LEARN MORE



- ★ REDUCE DRY MATTER LOSS
- ★ LESS HEATING
- ★ SPEED FERMENTATION
- ★ IMPROVE DIGESTIBILITY
- ★ ENHANCE NUTRIENT RETENTION

<p><b>Southeast PA</b> Regional Manager: Lititz, PA Scott Forbes (717) 572-6182</p> <p>Airville, PA Jarrett Wilson (717) 916-2224</p> <p>Kirkwood, PA Les Hershey (717) 989-1808</p> <p>Manheim, PA Steve Kauffman (717) 940-4474</p>	<p>Manheim, PA Brent Neely (717) 371-7391</p> <p><b>Lancaster Area PA</b> Regional Manager: Chad Martin Brownstown, PA (717) 314-2460</p> <p>Lebanon, PA Noah Gesford (717) 805-4075</p> <p>Newville, PA Kyle Kotzmoyer (717) 422-1356</p>	<p><b>Central/Western PA</b> Regional Manager: Dan Ingle Tyrone, PA (814) 935-8610</p> <p>Centre Hall, PA Keith Hershey (814) 571-8795</p> <p>Kittanning, PA Matt Smith (724) 525-0334</p> <p>Millmont, PA Ken Heimbach (570) 847-9150</p>	<p>Watsontown, PA Jim Ulmer (570) 490-4166</p> <p>Winfield, PA Keith McCool (570) 847-8645</p> <p><b>South Central PA</b> Hollsopple, PA Nathan Spory (814) 341-9134</p> <p>Chambersburg, PA Brian Horst (717) 360-0483</p>	<p>Shippensburg, PA Ed Okuley (717) 816-6082</p> <p><b>Area-wide</b> Tyrone, PA Dave Russell (814) 935-2640</p> <p>Watsontown, PA Don Sanders (570) 713-4393</p> <p><b>PA Warehouse</b> Lititz, PA (717) 581-1558</p>
---	--	--	---	---



**"CAPTURING THE NUTRITIONAL VALUE IN FEEDS IS THE KEY TO PROFIT."**