

news@farmshine.net

June is Dairy Month

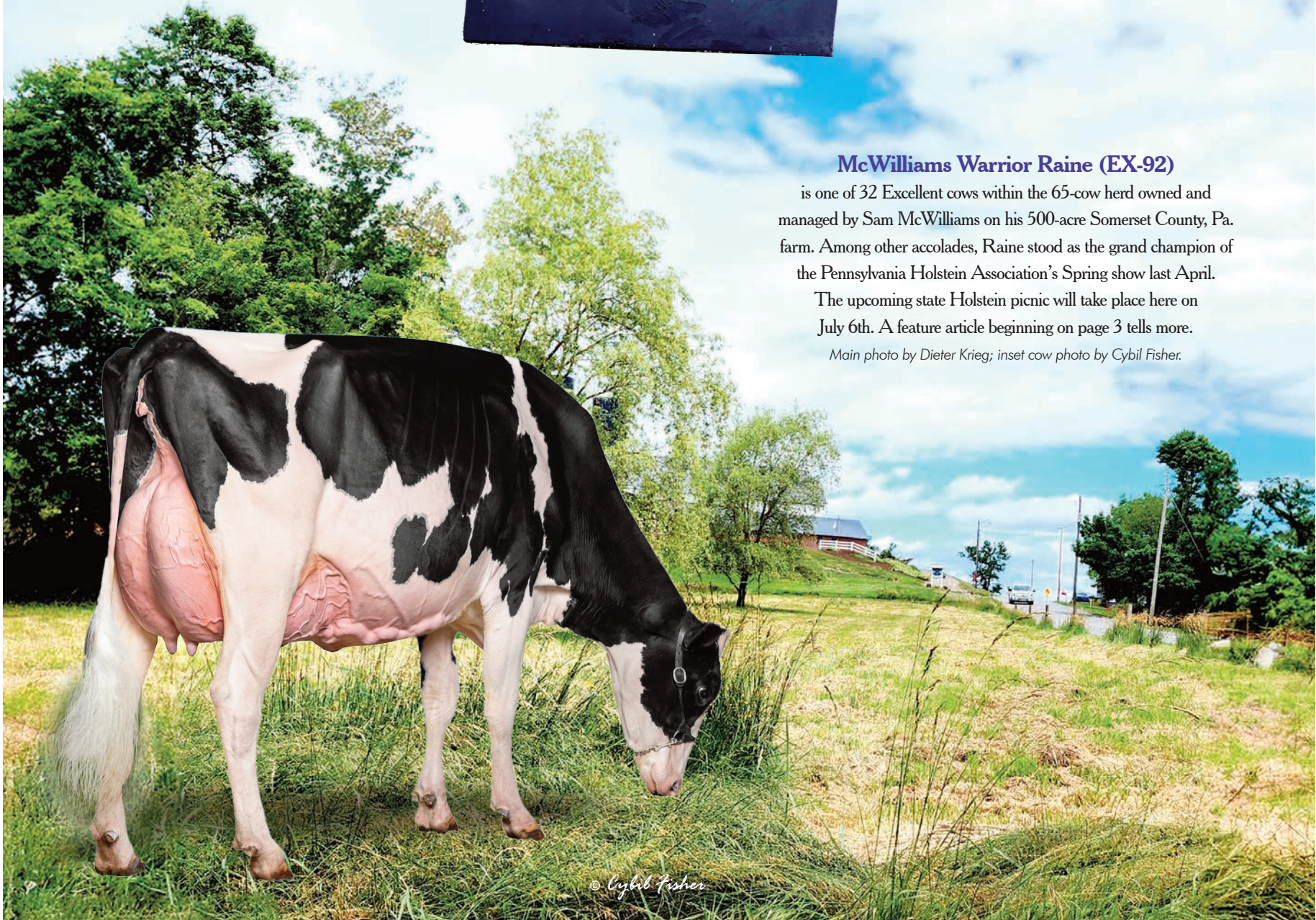
FARM SHINE

We rise every week to cover farmers and agribusinesses

Farmshine • Volume 45, Number 41 • \$20 one year

Mailed the day before →

June 14, 2024



McWilliams Warrior Raine (EX-92)

is one of 32 Excellent cows within the 65-cow herd owned and managed by Sam McWilliams on his 500-acre Somerset County, Pa. farm. Among other accolades, Raine stood as the grand champion of the Pennsylvania Holstein Association's Spring show last April.

The upcoming state Holstein picnic will take place here on July 6th. A feature article beginning on page 3 tells more.

Main photo by Dieter Krieg; inset cow photo by Cybil Fisher.

© Cybil Fisher

PERIODICAL • DO NOT DELAY

All you need is information	2	Don Bennink honored	7
Bird flu caution triggered	4	Heat stress study updated	5
Brown Swiss invitation	12	Heritage Days in Maryland	7
Cherlyn Beidler's recipes	15	Holstein herds of Excellence ..	12
Classified advertising	20	Market Moos	14

THE WEEKLY DAIRY FARM FAMILY MAGAZINE

"I love staying connected to my Pennsylvania farm roots."
 - J.R., South Carolina

It's time.
Don't wait.

Send in your subscription request now. Keep in touch with dairy news of today.



Two Years \$38 • One Year \$20

Name: _____
 Address: _____
 Town: _____ State: _____ Zip: _____
 Phone or e-mail: _____ New / Renewal (Circle one)

Mail with payment to FARM SHINE, 342 E. Main St., Ste. 201, Leola, PA 17540

Free webinar on June 21
'All you need to know about dairy markets'

HARRISBURG, Pa. — On Friday, June 21 from noon to 1 p.m., the Center for Dairy Excellence will host a "Protecting Your Profits" webinar with two special guests from Ever.Ag. The webinar is part of a newly revamped "Protecting Your Profits" series that will feature a different guest sharing various perspectives on dairy markets and risk management each month. Titled "Top 5 Things You Need to Know About Dairy Markets" and led by Valerie Mason-Faith, risk education manager at the Center, the June 21 webinar will feature Kathleen Noble Wolfley and Colin Kadis from Ever.Ag.

Wolfley and Kadis will provide an update on June 2024 dairy market conditions and focus on five key areas:

1. Milk production dynamics: Current production, cow numbers, margin expectations, replacements, etc.
2. Domestic demand: Retail promotional activity, restaurant traffic, and year-to-date consumption.
3. Dairy exports: Performance year to date and what we might expect for the second half.
4. Butter: High prices and an evaluation on whether these prices can last.
5. Macro markets: A look at US/global economic trends.

"We're looking forward to hearing Ever.Ag's thoughts on dairy market conditions so far in 2024. Our speakers are immersed in risk management every day, and they have excellent insight on market factors that are influencing the dairy industry and entire food supply chain," Mason-Faith said. "This webinar will also kick off our revamped 'Protecting Your Profits' webinar series, where we'll dive deeper into different areas of dairy markets and risk management each month."

During the webinar, Wolfley and Kadis also plan to share details about the Dairy Revenue Protection (DRP) program. With the last day to transfer agents being June 30, it will give listeners a chance to get informed on the risk management tool if they choose to add DRP into their risk management plan.

To join the discussion in a format that is most convenient for you, the Center will host it in a webinar, podcast, and conference call format. There is no cost to participate in the 'Protecting Your Profits' discussion, and no registration is necessary.

- Webinar format: Visit centerfordairyexcellence.org/JunePYP on Friday, June 21 at noon to launch the webinar and watch live.

- Conference call format: Call 1-301-715-8592 on Friday, June 21 at noon. Webinar ID: 897 3745 6061; Passcode: 945023

- Podcast format: Visit centerfordairyexcellence.org/pyp to listen to a recording of the "Protecting Your Profits" discussion and subscribe to get notified when new episodes are released. The episode is expected to be published after the live webinar is concluded.

"Got fresh cows? Get Comfort!"
Fresh starts pay back bigtime



Cow comfort is more important than ever in today's times of tight milk margins and reduced numbers of dairy replacement cattle. Protect your cattle investments and capitalize on them. Help your herd reach its genetic potential with fresh starts that pay back dividends.



WATCH

Nothing impacts cash flow like problem-free lactations and smooth heifer transitions. Got fresh cows? Get Comfort... with Udder Comfort!™



"Soft, comfortable udders that milk out quickly and completely have a big impact on milk quality and

performance," says Erik Hagedoorn, managing one of two Bos Dairies locations near Lovington, N.M., milking 5400 Jersey cross cattle and calving well over 30 animals daily. "We rely on Udder Comfort for routine use in our hospital groups and for our fresh cows at the start of lactation. When outdoor conditions decline, we increase our preventive use. It works like a charm."

"We use Udder Comfort after each milking for 5 to 7 days after calving to remove swelling. This gets udders softer faster for more milk. We saw better first-lactation performance in our 2-year-olds with a 3 to 4 pound production increase at 14 DIM, and a reduced SCC for the group," says Keith Beer, Beer Cattle Co., Berne, Ind., calving 250 heifers monthly. "We love how easy it is to do this in the parlor."



UDDER COMFORT™
Quality Udders Make Quality Milk

Her Comfort is Our Passion!

Softer udders ⇒ Faster milking
 Better quality ⇒ MORE MILK

1.888.773.7153
uddercomfort.com

Helping reach their potential since 1998!



For external application to the udder only, after milking, as an essential component of udder management. Wash and dry teats thoroughly before milking.



USPS 509450 ISSN 0745-7553

Published by Farmshine LLC in Lancaster County, Pennsylvania.

1-YR. SUBSCRIPTION - \$20.00
 INTERNATIONAL SUBSCRIPTION - \$40.00
 Published every Friday except the week of Christmas

Dieter Krieg, Editor & Publisher
 Melissa Johnson, Advertising Representative
 Ashley Denlinger, Advertising Representative
 Sue McCloskey, Secretary
 Douglas Denlinger, Production Manager

Send subscriptions, news & advertising to:
 FARM SHINE
 342 E. Main St., Suite 201, Leola, Pa. 17540
 Phone 717-656-8050 | Fax 717-656-8188
news@farmshine.net | ads@farmshine.net

Periodicals postage paid at Lancaster, PA and at additional mailing offices.

POSTMASTER: Send Address Corrections To:
 FARM SHINE
 342 E. Main St., Suite 201
 Leola, Pa. 17540



McWilliams Goldchip Faster (EX-93) goes back to the Chief Faith family and was the winner of the Production Class at the Pennsylvania Spring Show last April.



McWilliams Sweet Emotion (VG-88) as a 2-year old, is also a daughter of Susan.



McWilliams Damion Grace (EX-94-2E) stood as the first-place aged cow and honorable mention grand champion at the Pennsylvania Spring Show in April.

Determination drives McWilliams' show-winning herd

By DIETER KRIEG
Farmshine Editor

SOMERSET, Pa. — The Oxford English Dictionary defines prodigy as “a person — especially a young one — endowed with exceptional qualities or abilities.

Sam McWilliams, 29, has been around cows for all of his life and for reasons he can't explain himself ... he's got the gift of knowing how to breed the good ones. And then, finding sires to make the good ones better yet. He has been doing so since his mid-teens. Of the 65 cows in his barn, six are EX-94 and another six are EX-93. In all, he has 32 Excellent cows under his care. He bred most of them himself, while also purchasing a few as calves and developing them to their full potential. Not to be overlooked is that he has sold some high-point cows too.

“We turned the mating selections over to Sam when he was 15,” said his mother, Charlene, acknowledging his exceptional ability. Four years later, he was exhibiting at the World Dairy Exposition, attracting the attention of breeders and exhibitors alike, many of whom are known nationally and internationally.

“Chris Hill and the late Michael Heath stopped in often,” commented Sam, who hated school and quit after the 8th grade. He was totally more interested in working with cows,

possessing an intensity that matches the dedication of yesterday's renowned breeders and herdsmen.

Now, it's your turn to see the fast-rising McWilliams Registered Holsteins which have outclassed many competitors at recent Pennsylvania Holstein shows and beyond.

Sam and his mother, who fully shares in the animal husbandry workload at McWilliams Farm, will host the Pennsylvania Holstein Association's picnic on July 6th from 11 a.m. until milking time. All are welcome.

Aside from being able to see a herd of cows that boasts a BAA of 111.5, visitors can simultaneously “inspect” the new barn, which was completed a year ago. It features 32 free stalls on one end and six bedded-pack box stalls on the other. Each pen was designed for two cows. An attached perpendicular wing at the center houses a double-4 step-up milking parlor, utility room and spacious office.

Up the hill, amidst several old and neglected buildings, there's a modern, open-air calf barn that was built 12 years ago. It, along with its occupants will likely also interest the anticipated crowd of Holstein enthusiasts.

Reservations for the event, which includes lunch, are due Monday, June 17, and may be made online at www.paholsteins.com

The Summer Sensations Sale will follow on the premises immediately after lunch, at 12:30 p.m. A pre-sale preview will

be hosted by the McWilliams family on Friday evening, July 5th.

The family owns 500 acres and rents another 400, which virtually assures that they can raise enough forages and grains for the herd. “We were milking as many as 165 cows here about 20 years ago and had to buy hay and straw,” Sam reminisced. “I was big enough to help but not old enough to have any say,” he grinned. “It's easier to milk fewer cows and farm more acres. I like both, but enjoy the cows the most.”

“Mom and Dad (Clyde, deceased) moved here in 1987, after renting a farm in Westmoreland County for 6 years,” Sam continued. “Our interest in Registered Holsteins was ignited during our youth when we both worked on dairy farms, explained Sam's mother, Charlene. “My grandfather, Ben Brown of Fayette County had some great cows which he showed,” she noted with pride.

The result of that inspiring background was that they started with an all-around foundation that was pretty solid with ambition, attitude and goals. “We bought most of our cows from Terry Kuehn, Kirk Hillegas and Ron Wood,” Charlene proudly revealed.

Not surprisingly, Sam breeds for type, the common strategy for a show-winning herd. Bulls from proven cow families are highly preferred, he said, naming Sidekick, Unstoppabull,

turn to page 17



SHADY LANE
Curtains LLC

Industry Leader
in AG Curtains



**Maximum protection in the Winter
& Ventilation in the Summer.**



Curtain Experts
Most Durable
Longevity

shadylanecurtains.com | 717-690-2003

Pa. announces voluntary bulk tank monitoring for bird flu

By SHERRY BUNTING
Special for Farmshine

WASHINGTON — Bovine Influenza A / H5N1, known in birds and domestic poultry as highly pathogenic avian influenza (HPAI), has spread to dairy herds in three more states -- Iowa, Minnesota, and Wyoming.

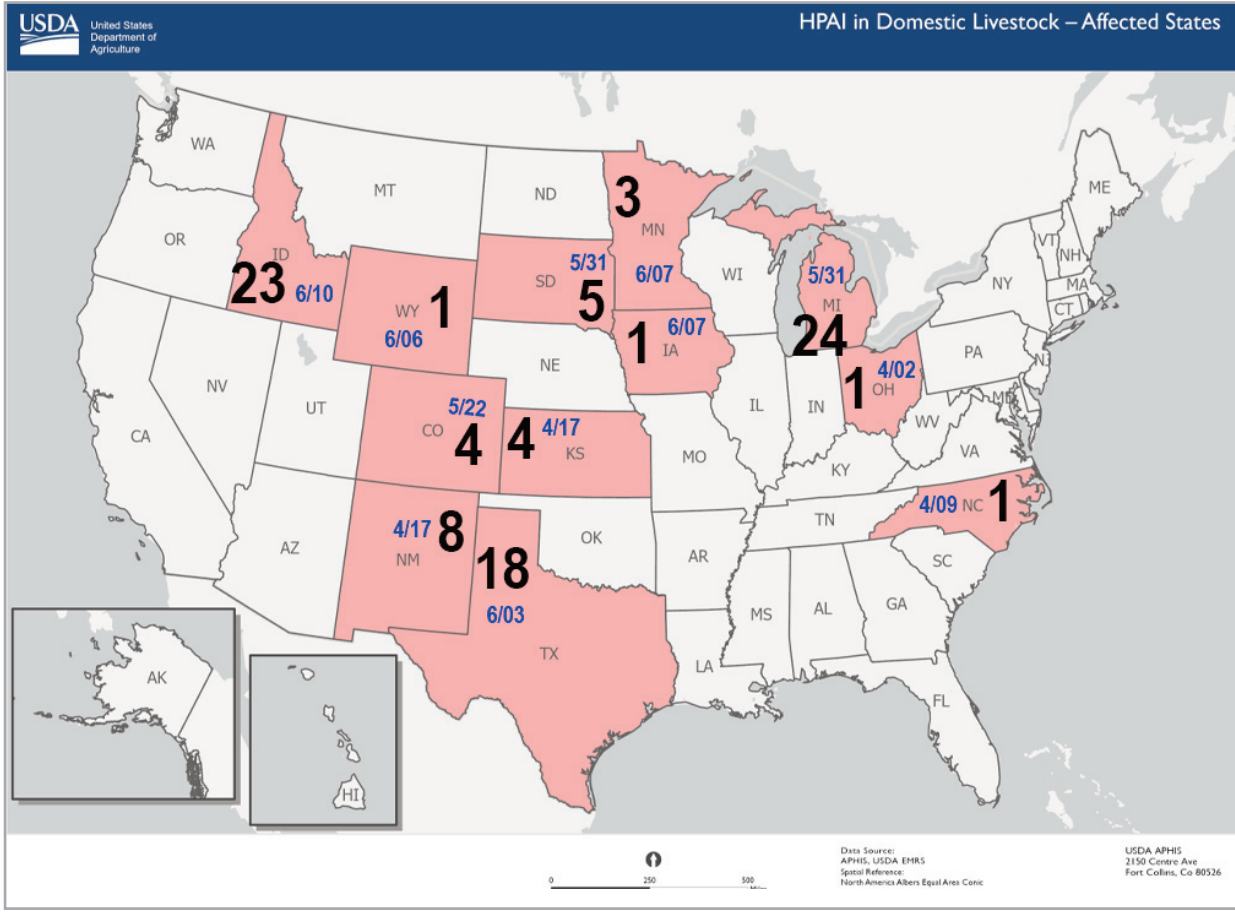
As part of emergency response plans, as many as 16 states, including Pennsylvania, are rolling out voluntary bulk tank monitoring programs as supported by USDA's May 31 announcement.

As of June 12, there are no detections of H5N1 in dairy herds and no active HPAI in poultry flocks in Pennsylvania.

The USDA APHIS website confirmed 93 detections in dairy herds in 12 states since March 25, of which 47 have been confirmed in the past 30 days in just eight states (in order of most recent detection): Idaho, Minnesota, Iowa, Wyoming, Texas, Michigan, South Dakota, and Colorado.

Of the other four states, Ohio and North Carolina are beyond 60 days since detection. Kansas and New Mexico will be at 60 days on June 16.

During the monthly Center for Dairy Excellence call, Pennsylvania State Veterinarian Dr. Alex Hamberg said herd detections in other states have come primarily from "either sick cows or through epidemiologic tracing from positive farms. It appears this is still a single bird to cow spillover that occurred in late 2023 and was not found until early 2024, so it



spread out from there, and we're now trying to catch up," he said.

"Equipment, people, and cattle, that's how this spreads. I can't stress this strongly enough," said Hamberg. Iowa is testing cattle close to positive poultry operations to provide data on species transfer risk.

Hamberg announced a Pennsylvania bulk tank monitoring program, supported by USDA. "This will be voluntary. The goal is to provide data of the status of the virus in Pennsylvania, or more likely the lack of it," he said.

"We also need this data for quicker response time, and to protect nearby poultry farms. Even more important, is to provide a platform to engage concerned consumers and stakeholders to show we are addressing this proactively, that we have a plan, that we are under control, and that pasteurized dairy products continue to be safe and wholesome," he explained.

The status-enrollment period is three weeks, during which bulk tank and other samples will be taken. After three consecutive weeks of negative results, the dairy farm would achieve enrolled monitored herd status and continue weekly bulk tank samples thereafter to maintain that status.

"We are flying the plane while building it," he said, noting early enrollment in the voluntary bulk tank testing program begins this week of June 14th, so that

testing can begin the following week.

Those interested can email RA-Ag_StateVet@pa.gov or call 717-307-3258. To complete a web form for enrollment directly, go to <https://forms.office.com/Pages/ResponsePage.aspx?id=QSiOQSGb1U2bbEf8Wpob3rFK2-AXM3FAtfP5r1dhDm-tURVpGTktQUjZDUkhQUUpMVUtDS1U1T0o1SS4u>

"We will then get back to you with an enrollment packet," said Hamberg.

Hamberg said the May Exhibition Quarantine Order does not go into effect unless HPAI reaches dairies in Pennsylvania. However, effective now: Dairies within one and a half miles of an HPAI-infected poultry flock cannot show dairy cows at fairs and shows. Currently, there are no active poultry infections in Pennsylvania.

Dr. Ernest Hovingh, director of the PADLS said testing is currently well under capacity and prepared to handle bulk tank monitoring. For PADLS updates, visit <http://padls.agriculture.pa.gov/InnerPages/HPAICattle.html>

For details from the CDE call, to hear a recording, and see links to resources, visit <https://www.centerfordairyexcellence.org/hpai-industry-call/>

IMMU-PRO

SCC CHALLENGE

Win \$15,000, \$5,000 or \$3,000

Save this ad!

1. Contest open to herds & residents of USA only.
2. Must feed Immu-Pro 0.50 oz./lact. cow AM from AlphaGenetics Inc. min. 120 continuous days.
3. Must start Immu-Pro by **7-1-2024**. ★★★★★
4. The three lowest herds' SCC average for Nov.2024 under 50,000 SCC will win:
 - ★ \$5000 1st Place ★
 - ★ \$3000 2nd Place ★
 - ★ \$1000 3rd Place ★
5. Also, (3) most improved herds will win \$2,000, \$1,000, \$500. Even if all over 100k by 11-30-24.

A 200-cow herd on Immu-Pro gains approx. \$6000/month or about \$72,000 more profit/year. (\$1 extra profit/lact. cow/day).

If most improved herd also lowest overall, wins \$15,000!!!

All herds on Immu-Pro will benefit from our 51 year mission to improve every herd (especially yours), milk quality (SCC, F, P) while improving immune systems, herd health, conception, longevity and profitability.

A reminder: 2024 SCC CHALLENGE ends 11-30-2024. If your herd is on .50 oz. minimum IMMU-PRO from alphasgenetics.com since 7-1-2024, you are already entered FREE! ★ After 12-1-2024, just have your dairy plant email your JULY & NOV.2024 HERD AVG. SCC by 12-15-2024 to staff@alphageneticsinc.com or mail to Alpha Genetics Inc., P.O. Box 360, Whitewater, WI 53190.

ANY QUESTIONS? CALL/TEXT 920-650-1631. Keep up the good work!

Dairy farmers: Aim for 50K SCC, earlier, stronger heats and higher conception, more milk, higher F% & P%. Aim for an extra \$1 profit/cow/day by feeding 0.50 oz. Immu-Pro every morning.

Immu-Pro: Healthier cows produce more higher-quality milk. A 200-cow herd decreasing SCC 200 to 50 SCC will gain approximately 200,000 lbs. milk/year!

Linear Score	SCC	lbs. Milk loss (per 2 yr. old lactation)	lbs. Milk loss (per mature cow lactation)
2	50k	0	0
3	100k	200	400

"the goal" - 0

Improve milk & reproduction with Immu-Pro today

Since 1973, your success is our commitment Watch vcy.tv Support 97milk.com

CALL 202-224-3121 and tell your two Senators to co-sponsor now and get it passed. S1957 "WHOLE MILK FOR HEALTHY KIDS ACT"

Buy & give away whole milk and cheese weekly

AG Inc. www.alphasgeneticsinc.com Call today: **920-650-1631** Proudly made in the USA

Always promote milk and dairy products

For more good news from around the world, 24/7, call 1-605-477-2279. *some exclusions apply

Planning on replacing an existing roof or constructing a new building?

THINK LIFETIME

THINK METAL

Martins Roofing • 717-532-3460
260 Walnut Bottom Road • Shippensburg, PA 17257

Improve Livestock Traction in New & Existing Barns

Better Drainage for Dry & Healthy Hooves

CUSTOM CONCRETE GROOVING & SLOT CUTTING FOR ALLEY SCRAPERS

1-800-228-5471 www.DMsafetygrooving.com

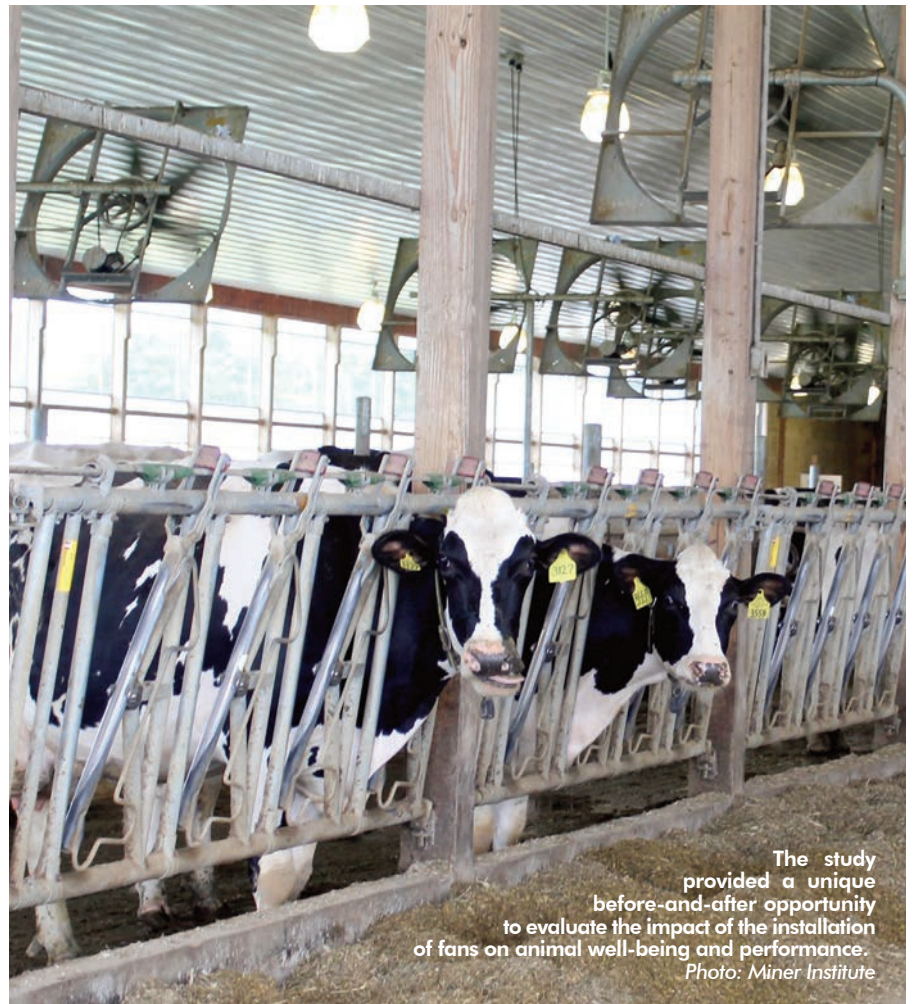
Heat stress in cows gets more thoroughly researched

CHAZY, N.Y. — The Northern New York Agricultural Development Program (NNYADP) reveals new research about heat stress in cows.

"This study provided a unique before-and-after opportunity to evaluate the impact of the installation of fans on animal well-being and performance during the short periods of heat stress that are common in northern

New York and do not allow the time needed for cows to acclimate," says Katie Ballard, director of research at Miner Institute in Chazy, N.Y. She has overseen a number of NNYADP-funded dairy animal heat stress research projects.

Earlier NNYADP-funded research provided no-fans-in-use baseline data from that farm at which the farm management team in-



The study provided a unique before-and-after opportunity to evaluate the impact of the installation of fans on animal well-being and performance. Photo: Miner Institute

Heifers wanted for big sale

STATE COLLEGE, Pa. — The heifer search is on! If you have extra dairy replacements to sell, the Pennsylvania Holstein Association wants them! They're looking for:

- Springers due August to October;
- Short bred's due December to February, (great for exports);
- Ready to breed heifers; and
- Calves that are 5 to 10 months old.

"We want them because the market is hot!" says PHA's executive director, David Lentz. "We want dairy producers to take advantage of the market if they have surplus heifers. We can help by holding a "Know

What You Buy" Heifer Sale on Friday, July 12, at 10:30 a.m. at the Pennsylvania Holstein Association Farm, 1806 River Road, Middletown, Pa.

To get in on this sale, please contact PHA at director@paholsteins.com or 717-329-9202. Bonus information to consider ... there is an extra payback for heifers that are tested negative for Leucosis; A2A2 heifers are in demand; and there is an extra payback for heifers that are tested negative for Leucosis; A2A2 heifers are in demand; and Sire Identification and/or Registered heifers are valuable with or without genomic tests.

'The Dairy Show' runs 24/7/365

MADISON, Wis. — *The Dairy Show*, World Dairy Expo's podcast, is available on Amazon Music, Apple Podcasts, Google Podcasts, iHeart Radio, Spotify and online at world-dairyexpo.com

New episodes of *The Dairy Show* are released on the second and fourth Tuesday of each month. Expo's podcast features a new guest on every episode discussing topics related to the global dairy industry.

"As the digital meeting place of the global dairy industry, Expo's podcast gives listeners a taste of Expo year-round," shares Katie

Schmitt, host of *The Dairy Show*. "The Dairy Show focuses on a variety of topics ranging from cows to the colored shavings to cutting-edge technology while introducing different guests to provide unique perspectives."

Listeners span the globe, representing over 110 countries, all 50 U.S. states, and 12 Canadian provinces and territories. Some of *The Dairy Show's* most popular episodes include "Judging on the Colored Shavings", "Fitting and Grooming Dairy Cattle", "Just Talking Cows" and interviews with Expo Recognition Award winners.

stalled 51-inch variable-speed, auto-control fans in 2022.

The earlier on-farm heat stress abatement conducted by Miner Institute with NNYADP grant funding showed the impact of periodic and short duration environmental heat stress

events on dairy cows, particularly on higher-producing cows under northern NY conditions. The data showed decreased milk production, changes in milk composition, decreased reproductive performance, and in-

turn to page 16



1581 Business Rt. 66
Greensburg, PA 15601
(724) 834-3162



11606 Greencastle Pk.
Hagerstown, MD 21740
(301) 223-6877



1044 E. Main St.
New Holland, PA 17557
(717) 354-8030

DeLaval Plus Behavior Analysis helps you to create a better To-do List:



Find Sick Cows

- ✓ Rumenation
- ✓ Activity
- ✓ Cow Health Index



Find Cows in Heat

- ✓ One graph, easy to read
- ✓ Accurate Heat Detection
- ✓ Clear breeding window

Find them Faster

- ✓ BA300 Cow Location
- ✓ BA300 Time in Zone



*Terms and conditions apply

Advertiser's Index

Agri-King.....24	Martin's Roofing.....4
Agri-Trac.....11	Meyer, Dick Company.....4
Alpha Genetics (Immu-Pro)....4	Miller, J. Ag Equipment.....13
Apex Ag-Tek Solutions.....15	Morrissey Insurance.....14
Bargain Page.....10	Natural by Nature.....7
Beiler Industries.....19	Neer, Paul.....12
Beitzel Spraying.....22	Nelson & Sons Concrete Gr.....6
Brubaker's Quality Sales.....6	New Holland Sales Stables...19
Brubaker, Rufus Refrigeration .6	Nicholas Meat.....16
Building Directory.....12	Pa. Holstein Association.....20
Cedar Crest Equipment.....23	Patz.....16
DHIA Pages.....8-11	Penns Valley Livestock.....19
ELS Manufacturing.....14	Power Systems Electric.....12
Esch Hay Equipment.....21	Precast Systems.....20
Fisher & Thompson.....7,9	Rissler Conveyors.....20
Fisher's Quality Dairy Sales .19	Select Sires Member Coop.....8
Gehm, L.R.....21	Shady Lane Curtains.....3
Horst Grain Roasting.....21	Sollenberger Silos.....20
JBS.....6	Sturdy Built Manufacturing.....7
JBZ/Graham Dairy/Milk Barn .5	Triple M Farms.....21
JRS Ag Assemblies.....10	Udder Comfort.....2
Keystone Concrete Products.13	Weaver's Toasted Grains.....6
King Bacterial Digestant Blend22	Weaver, Tim Auction Service 22
Kish Valley Dairy Sales.....20	Willow Road Silo Doors.....20
Leabrook Ag.....13	Zimmermans Glass Strg...20,21
Lira Gold.....11	

Auction Guide

JUNE 18, 10 a.m. Compass Point Farm Herd Dispersal, Gap, Pa. Sale managed by Tim Weaver Auction Service.

JUNE 19, 10:30 a.m. Dairy Cow & Heifer Sale, New Holland Sales Stables, New Holland, Pa. Sale managed by New Holland Sales Stables.

JUNE 20, 7 p.m. Special Dairy Sale, Fisher's Quality Dairy Sales, Ronks, Pa. Sale managed by Fisher's Quality Dairy Sales.

JUNE 20, 7:15 p.m. Special Dairy Cow & Heifer Sale, Brubaker's Quality Dairy Sales, Shippensburg, Pa. Sale managed by Brubaker's Quality Dairy Sales.

JUNE 21, 1 p.m. Monthly Consignment Dairy Sale, Kish Valley Dairy Sales, Belleville, Pa. Sale managed by Kish Valley Dairy Sales.

JUNE 21, 4 p.m. Special Driving & Draft Horse Sale, New Holland Sales Stables, New Holland, Pa. Sale managed by New Holland Sales Stables.

Sale managed by New Holland Sales Stables.

JUNE 26, 10:30 a.m. Elite Dairy II Dispersal Sale, Copake, N.Y. Sale managed by Modern Associates.

JUNE 28, 7:30 a.m. Special Pony Giveaway Sale, Penns Valley Livestock, Centre Hall, Pa. Sale managed by Penns Valley Livestock.

JULY 6, PHA Summer Sensation Sale & Picnic, Somerset, Pa. Sale managed by Pa. Holstein Association.

JULY 12, 10:30 a.m. Know What You Buy Heifer Sale, Middletown, Pa. Sale managed by Pa. Holstein Association.

JULY 18, 7:15 p.m. Special Mid-Summer Dairy Cow & Heifer Sale, Brubaker's Quality Dairy Sales, Shippensburg, Pa. Sale managed by Brubaker's Quality Dairy Sales.

Christian group opens internship opportunity

CHAMBERSBURG, Pa. — The Tide® (www.thetide.org) recently announced that its summer internship program is now seeking applicants. This year, The Tide® is participating in a ministry program operated by another organization that hires an intern for the summer and then lends that individual out to other organizations to give the intern a diversity of exposure and experiences with different ministries.

College students with good writing and computer skills, a heart for ministry, and an interest in ministry marketing are invited to apply for this exceptional opportunity to make a lasting impact on the Kingdom. The internship provides students with significant real-world experience in The Tide® ministry's marketing activities while making valuable contributions to the operations of this global outreach ministry. The Tide® shares the Gospel daily through radio broadcasts in over 20 different languages on three continents.

Interns will be responsible for the production of ministry

Dairyman's Datebook

JUNE 20, 9:30 a.m. Hoof management workshop at Maier Farms LLC, 7085 Schumacher Road, Waunakee Wis. Sponsored by Professional Dairy Producers. Registration and more information is available by visiting www.pdpw.org or calling 800-947-7379.

JUNE 18-21, National Ayrshire Convention, Comfort Inn & Suites, 840 Sean Drive, Fremont, Ohio.

JUNE 18-22, National Guernsey Convention, Chula Vista Resort, 1000 Chula Vista Parkway, Wisconsin Dells, Wis.

JUNE 19-22, American Jersey Cattle Association (AJCA) and National All-Jersey, Inc. (NAJ) annual meetings, Sheraton Springfield Monarch Place, Springfield, Mass.

JUNE 22, 8 a.m. to noon, Breakfast on the Farm at Iowa's Dairy Center, 1527 Highway 150 South, Calmar.

JUNE 24-27, National Holstein Convention, Hyatt Regency, 170 South West Temple, Salt Lake City, Utah.

JUNE 27, 9 a.m. "Herds and Her: Empowering Women in Dairy, Central Milk Testing Laboratory at Penn State's University Park campus.

JUNE 25-29, National Milking Shorthorn Convention, Fireside Inn & Suites, 25 Airport Road, West Lebanon, N.H.

JULY 3-6, National Brown Swiss Convention, Hyatt Regency Hotel, 333 Main Street, Green Bay, Wis.

JULY 6, Pennsylvania Holstein Picnic, McWilliams Farm,

JULY 12, 10 a.m. Virginia Dairy Expo, Shenandoah Valley Produce Auction, 2839 Lumber Mill Road, Dayton.

JULY 14, 11 a.m. to 4 p.m. New York State Holstein Picnic, hosted by George Farm, 320 Genesee Road, Arcade.

JULY 16, 9 a.m. Lancaster County Holstein show, Solanco Fairgrounds, Quarryville, Pa. Deadline for entries is July 1. Call Bob Wenger, 717-471-3790 for additional information.

JULY 24-26, Young Cooperator Summer Break, Country Inn & Suites by Radisson, Harrisburg Northeast-Hershey, 8000 Jonestown Road, Harrisburg, Pa.

JULY 26, 9 a.m. rain or shine, Dairy Industry Golf Outing, Hales Mills Country Club, 146 Steele Road, Johnstown, N.Y. Register by July 10 to N.Y. Holstein Assoc.

AUGUST 8, 6 p.m. Lancaster County Holstein Field Night, at Jonathan Glick's farm, 1148 East Oregon Road, Lititz, Pa.

newsletters, promotional brochures, and other mail pieces, ongoing development and maintenance of web-based ministry promotion, processing data, updating records, and producing reports, and general office operations of The Tide® ministry.

Traditionally, The Tide® offers these as summer internships because that is when students are more readily available and can devote more time to the experience, but The Tide® is also open to part-time internships throughout the year. The length of the internship is variable and may be either compensated or on a volunteer basis.

For more information, visit its website at www.thetide.org or its Facebook page.

NELSON & SONS

CONCRETE GROOVING

FULL SURFACE & WIDE GROOVING

Serving PA, NY & Surrounding States

PA: 610-589-1030

NY: 607-351-9690



Save Cows, Save Your Profit Margins

www.NelsonandSonsConcreteGrooving.com

WHITE WASHING with ADVANTAGE FARM WHITE

- Dries White • No Wet Floor
- Is Compatible With Disinfectant And Fly Sprays
- Does Not Rub Off Easily
- Washes Off Windows And Pipelines Easily



BARN CLEANING SERVICE AVAILABLE WITH COMPRESSED AIR

To have your barn cleaned with air it will clean off dust, cobwebs and lots of the old lime. This will keep your barn looking cleaner and whiter longer.

CALL US ABOUT ON THE FARM FLY CONTROL

Serving Southeastern Pa. And More

Beitzel Spraying

Witmer, PA 17585 • 7:00 A.M. to 5:00 P.M.
717-392-7227 or Toll Free 1-800-727-7228

CERTIFIED COMMERCIAL APPLICATORS
LICENSED 45 YEARS EXPERIENCE INSURED

Radio Dispatched Trucks
Barn Spraying Is Our Business
Not A Sideline
Spraying Since 1961

(JBS)


Souderton, PA

SELL YOUR CATTLE!

PURCHASING CULL COWS

Same-Day Payment
NO Fees • NO Commission

For more information:
Direct: (970) 506-8215
Duff George: (717) 594-8630



Livestock Buying Stations are OPEN:

7195 Molly Pitcher Hwy
Greencastle, PA 17225
Monday & Wednesday
9 a.m. - 2:30 p.m.

503 School Rd
Denver, PA 17517
Tuesday & Thursday
9 a.m. - 2:30 p.m.

Contact Doug Musser: (267) 371-9824

Learn more about our brands at
jbsfoodsgroup.com

249 Allentown Rd | Souderton, Pennsylvania 18964 USA

RUNNING LOW ON HIGH-OLEIC (PLENISH) BEANS?

We can now sell Plenish Flaked Toasted Beans directly to you!

Call for pricing & delivery info!

Toasted is Tastier!
(717) 355-BEAN (2326)
220 White Oak Road
New Holland, PA 17557

Brubaker

Refrigeration LLC

Toll Free 1-866-665-3525

New & Used Quality Milk Tanks

400 Gallon

700 Gallon

800 Gallon

1000 Gallon

1500 Gallon

Walk-In Coolers and Freezers, Panels and Doors Available.

Dairy Shrine honors Don Bennink of NoFla Holsteins

FORT ATKINSON, Wis. — The National Dairy Shrine has selected Don Bennink of North Florida Holsteins as their Distinguished Dairy Cattle Breeder for 2024. This award is given annually to a progressive dairy breeder who excels in managing their dairy herd based on sound genetic and business principles. Bennink established North Florida Holsteins near Bell, Florida, in 1980, and has been an icon of dairy genetics ever since.

Through work and research collaboration on his own farm, Bennink has played a fundamental role in advancing selection for functional traits. He has accomplished this through development of outstanding cows

and bulls and circulating his knowledge and perspective with other breeders through genetics conferences and research facilitation.

Between 1981 and 2021, more than 200 bulls carrying the No-Fla prefix have been enrolled with the National Association of Animal Breeders. During this time, Bennink also developed several key females that have heavily impacted the Holstein breed. Most notably, he bred the dam of Mr. T-Spruce Frazz Lionel-ET — No-Fla Montross 42446-ET — who traces back to at least five generations of North Florida breeding.

Lionel topped the TPI list in April of 2022. Additionally, No-Fla Matriarch is top-20 all-time among proven bulls with a PTA Produc-

tive Life of 7.3.

Bennink has also bred 55 Dam of Merit awardees and 11 Gold Medal Dams, nine of which have scored 94 points, and he's bred another 15 EX-93 animals.

Early on, Bennink recognized the importance of health and fertility traits in sustaining the profitability of the Holstein breed. His perspective in this area made him an ideal speaker and panelist at genetics conferences across the country.

Over the years, Bennink has paid close attention to protein percent, even though his home state is a fluid milk market where producers are not paid for milk protein. Through these efforts he explored beyond his own herd and noticed an opportunity to increase value within the Holstein breed.

One of Bennink's greatest contributions to the dairy industry has been his participation in research projects. Most recently, his meticulous record keeping was instrumental in assisting researchers from Penn State



Don Bennink

University to identify early onset muscle weakness in Holsteins. Without his records from genotyped animals, it is likely that the defect would have remained undetected for some time. Regular collaboration with the University of Florida also helped advance the field of embryo transfer and IVE.

Nominators Andrew Steiner of Pine-Tree Dairy and Chad Dechow of Penn State University say: "We have

worked with Don as a fellow dairy cattle breeder and as a collaborator on many dairy genetics projects. We believe there are few breeders who have advanced the cause of breeding for efficient and profitable cows to the same extent as Don."

Bennink will receive the Distinguished Dairy Cattle Breeder award at National Dairy Shrine's Awards Banquet on Monday, September 30th in Madison, Wis. His portrait will then be displayed in National Dairy Shrine's Dairy Hall of Fame and Museum in Fort Atkinson, Wis.

King Barn Dairy MOOseum in Maryland will host Heritage Days June 29-30

GERMANTOWN, Md. — The King Barn Dairy MOOseum, located at 17920 Germantown Park Drive, Germantown, welcomes visitors to the county-wide Heritage Days program on June 29-30.

The MOOseum began welcoming visitors in 2010. It marked the start of a museum dedicated to capturing the dairy history for Montgomery County, Maryland.

Years of dedicated work and effort went into securing the right for the nonprofit MOOseum organization to use the only surviving structure — the dairy barn — still standing on the former 350-acre King dairy farm.

The Department of Parks had purchased the King farm back in the 1960s with plans to feature the property as an example of a working dairy farm. That plan was aban-

doned when in 1998 the decision was made to use the site for the South Germantown Recreational Park best known today as the Soccerplex. With more than two

dozen soccer fields along with in-

door and outdoor seating stadiums,

the Soccerplex hosts soccer games and tournaments as well as other field sports throughout the year. It is the most visited park in

Montgomery County. The

King dairy barn stands in the middle of all this activity reminding visitors that once there was an operating dairy farm with fields of grazing cows and crops. Not so today with hundreds of soccer players out on the carefully maintained soccer fields.

The MOOseum's 14th open season began on May 4th and it will continue to welcome

turn to page 13



Sturdy Built
Manufacturing, LLC

Multiple mounting system choices featuring maximum cow comfort for your new barn or remodel

Galvanized Free Stall Systems

Featuring the:

Freedom Suspension System

with the Exclusive Sturdy Built Support Post

- Open Front with Generous Lunge Room
- Stall Width and Height is Easily Adjusted
- Bolt-together Installation Requires No Welding
- Suspended Mounting Posts Provide Longevity



Call 866-543-5116

sales@sturdybuiltmfg.net

260 S. Muddy Creek Rd. Denver, PA 17517



Request a FREE Free Stall Equipment Guide!

Natural By Nature is looking to sign up Organic Dairy Producers.

- Family-owned operation that has been in business for 30 years.
- Have our own processing plant where we bottle our organic dairy products.
- Offer great quality premiums and an optional 100% grass-fed premium.
- No hauling, labs, or marketing fees, no equity deductions, or quotas.
- We are looking to expand our producer group in Lancaster, Berks, Perry, and Dauphin County.

For additional information, please reach out to Amy Simms at 484-643-6714.

EFFORTLESS FEED PUSHING!

ONLY THRU 6/30/24

0% FINANCING FOR 48 MONTHS!

- ✓ Reduced labor & fuel usage
- ✓ Save up to 180 hrs per year
- ✓ Clean feed alley
- ✓ Improved feed availability for the herd

LELY CENTER MID-ATLANTIC

FISHER & THOMPSON
INCORPORATED

100 Newport Road • Leola, PA 17540
717.656.3307
LelyCenterMidAtlantic.com

f LelyCenterMidAtlantic @LCMidAtlantic



For Records Processed Through DRMS Raleigh
800-344-2697 • www.dairyone.com

MAY 2024

Adams County

Table with 5 columns: Farm Name, Animal Type, and 3 numerical values. Includes farms like Apple Valley Creamery and Hillcrest Dairy.

Armstrong County

Table with 5 columns: Farm Name, Animal Type, and 3 numerical values. Includes farms like Scott Bowser and Shirey Jersey.

Beaver County

Table with 5 columns: Farm Name, Animal Type, and 3 numerical values. Includes farms like Wallace City Farm and Fischers Windy Ridge.

Bedford County

Table with 5 columns: Farm Name, Animal Type, and 3 numerical values. Includes farms like Glendon Eby and Manor Meadows Farm.

Berks County

Large table with 5 columns: Farm Name, Animal Type, and 3 numerical values. Includes farms like Misty Moor Holsteins and Daview Farm.

Centre County

Table with 5 columns: Farm Name, Animal Type, and 3 numerical values. Includes farms like Murmac Farms and Penndell Farms.

Chester County

Table with 5 columns: Farm Name, Animal Type, and 3 numerical values. Includes farms like Roy & Ruth Ann Bender and King Dairy LLC.

Table with 5 columns: Farm Name, Animal Type, and 3 numerical values. Includes farms like Don & Amy Rice and Misty Moor Holsteins.

Bradford County

Table with 5 columns: Farm Name, Animal Type, and 3 numerical values. Includes farms like Yrun Farm #1 and Glenora River Acres.

Bucks County

Table with 5 columns: Farm Name, Animal Type, and 3 numerical values. Includes farms like Marwell Dairy Farm.

Butler County

Table with 5 columns: Farm Name, Animal Type, and 3 numerical values. Includes farms like Thiele Farm and Hartzell Farm.

Cambria County

Table with 5 columns: Farm Name, Animal Type, and 3 numerical values. Includes farms like Brent Lowmaster and Barr Ridge Farm LLC.

Dauphin County

Table with 5 columns: Farm Name, Animal Type, and 3 numerical values. Includes farms like Murmac Farms and Penndell Farms.

Franklin County

Table with 5 columns: Farm Name, Animal Type, and 3 numerical values. Includes farms like David Bricker and Windy Knoll Farm.

Table with 5 columns: Farm Name, Animal Type, and 3 numerical values. Includes farms like One Way Holstein and DREAM RIDGE HOL. LLC.

Clarion County

Table with 5 columns: Farm Name, Animal Type, and 3 numerical values. Includes farms like Henry Farms of Knox LLC.

Clearfield County

Table with 5 columns: Farm Name, Animal Type, and 3 numerical values. Includes farms like Kennis Dairy Farms and Sankeycrest Farms.

Clinton County

Table with 5 columns: Farm Name, Animal Type, and 3 numerical values. Includes farms like Meyer Dairy Farm LLC and Scenic Meadows Farm.

Columbia County

Table with 5 columns: Farm Name, Animal Type, and 3 numerical values. Includes farms like Whitenight Family Farm.

Crawford County

Table with 5 columns: Farm Name, Animal Type, and 3 numerical values. Includes farms like TRCP Farm LLC and Foster Family Farm.

Cumberland County

Table with 5 columns: Farm Name, Animal Type, and 3 numerical values. Includes farms like Brymesser Farms and Lehman View Farms LLC.

Elk County

Table with 5 columns: Farm Name, Animal Type, and 3 numerical values. Includes farms like Stoney Lawn Farms and Ty & Tracy Long.

Erie County

Table with 5 columns: Farm Name, Animal Type, and 3 numerical values. Includes farms like Twin Creeks Farm LLC and Lind Farm.

Table with 5 columns: Farm Name, Animal Type, and 3 numerical values. Includes farms like Jackson Farms.

Fayette County

Table with 5 columns: Farm Name, Animal Type, and 3 numerical values. Includes farms like David Bricker and Windy Knoll Farm.

Franklin County

Table with 5 columns: Farm Name, Animal Type, and 3 numerical values. Includes farms like Paul H. Zimmerman, Jr. and James & Nina Burdette.

Huntingdon County

Table with 5 columns: Farm Name, Animal Type, and 3 numerical values. Includes farms like Evergreen Farms, Inc. and Willow Behrer Farms.

Indiana County

Table with 5 columns: Farm Name, Animal Type, and 3 numerical values. Includes farms like Blossom Hollow Farm and Nehrig Farm.

Jefferson County

Table with 5 columns: Farm Name, Animal Type, and 3 numerical values. Includes farms like Mowrey's Sprucelawn.

Advertisement for Brown's Feeds, Birdsboro, PA. Includes contact info: fmbfeed@brownsfeeds.com, www.brownsfeeds.com.

Advertisement for Lancaster DHIA. Includes text: DHIA Milk Lab — Microbiology / Culture Lab — Forage Lab, 1592 Old Line Road, Manheim, PA 17545.

Advertisement for Weaver Insurance Agency. Includes text: 'We're Here To Serve', For all your farming and agri-business insurance needs.

Advertisement for King's AgriSeeds Inc. Includes text: Focusing on - High Energy Forage for Healthier Cows & More Profit!, 717-687-6224.

Advertisement for Premier Select Sires. Includes text: Your Reproductive Solutions Partners!, 800-227-6417.

Advertisement for Select Sires Member Cooperative. Includes text: SELECT SIRES MEMBER COOPERATIVE, 614-878-5333.

The Mid-Atlantic Brown Swiss Invitational Show on June 22 in Frederick, Md.

Brown Swiss enthusiasts invited to enter their best

FREDERICK, Md. — An invitation is extended to all Brown Swiss enthusiasts from near and far to participate in the Mid-Atlantic Brown Swiss Invitational Show. Hosted annually by the Maryland Brown Swiss Association it will be held on Saturday, June 22, starting at 10 a.m. at the Frederick Fairgrounds in Frederick.

The online show entry system link is: <https://showman.app/shows#/mid-atlantic-brown-swiss-invitational-13a9/>

Tammy Voegeli, a well-known and highly qualified judge with experience on the national level, will place the classes. The showmanship judge will be Emily Yeiser Stepp from Leesburg, Va.

This year's show will once again be dedicated to Ronnie Heffner, who was a driving force behind this show's growth. The Youth Show shirts will again be sponsored by the Maddie Johnson Memorial Fund and the Deeter/Johnson families. They will also be giving some special awards in the showmanship contests.

Any interested youth may participate in Fitting and Showing in accordance with the age requirements, regardless of state resi-



dency. The class breakdowns are Novice; then Juniors: 8-10 years; Intermediates: 11-15 years; and Seniors: 16-21. The fitting and showing contest will be held the same morning of the show and will start at 8:30 a.m.

Maryland hospitality and fellowship with other breeders and friends will be evident on Friday evening, June 21, with food and drinks in the dairy show ring starting at 6:30 p.m. All are welcome.

Class lists, show rules and other information can be found in the Showman App mentioned in the second paragraph, above, and on the Maryland Brown Swiss website: <https://sites.google.com/site/marylandbrownswiss/> (Click on Invitational Show tab)

The Show Committee consists of Emily Heffner, Jenna Lenhart and Joy Widerman. Do not hesitate to contact them if necessary.

- Emmy Heffner — 240-344-6399 or eheffner@lswg.cpa
- Jenna Lenhart — 814-931-3726 or smithjenna12@gmail.com
- Joy Widerman — 717-752-5871 or brjowiderman@gmail.com

Holstein Association names Herds of Excellence winners

BRATTLEBORO, Vt. — Holstein Association USA's Herds of Excellence award recipients have bred and developed herds with superior production and type. This prestigious award, presented on an annual basis, celebrates exemplary Registered Holstein® herds that have met rigorous qualifying criteria with their 2023 records.

The award is broken down into three divisions based on herd size, including the Large Herd Division (500+ cows), Medium Herd Division (100-499 cows), and Small Herd Division (10-99 cows).

This year's honorees are:

- **Large herd size** (500+ cows)
Siemers Holstein Farms Inc. — The Siemers Family, Newton, Wisconsin, 8-year honoree

80.0% homebred; AACs — 84.7 points
ME averages: 34,042M 1543F 1057P

- **Medium herd size (100-499 cows)**

Koester Dairy Inc. — The Koester Family, Dakota, Illinois, 8-year honoree

99.8% homebred; AACs — 85.2 points

ME averages: 34,013M 1519F 1086M

- **Small herd size (10-99 cows)**

Kal-side Holsteins — The Oberholtzer Family, Hillsboro, Wisconsin, first-year honoree

94.0% homebred; AACs — 85.8 points

ME averages: 35,636M 1477F 1131 P

Doorco Holsteins—The Vandertie Family, Brussels, Wisconsin, 7-year honoree

100% homebred; AACs — 89.3 points

ME averages: 37,252M 1503F 1160 P

Ever-Green-View Holsteins LLC; the Kestell Family, Waldo, Wisconsin, 14-year honoree

98.9% homebred; AACs — 87.6 points

ME averages: 37,653M 1609F 1170P

Lazy M Farm, LLC — Herman and Michael Maier families, Stitzer, Wis.; first-year honoree

78.3% homebred; AACs — 88.1 points

ME averages: 35,515M 1514F 1119P

The awards will be presented during Holstein Association USA's 138th annual meeting in Salt Lake City, Utah. To register for the convention or learn more, please visit www.holsteinconvention.com.

Directory of Building Contractors

for new and renovated dairy facilities and other farm buildings

RYAN SERVICES, INC.
Building Relationships
Joseph M. Ryan
3179 Quaker Valley Road
New Paris, PA 15554
info@ryanservicesinc.com
Cell: 814.285.6129 Office/Fax: 814.839.4826

DAIRY HOUSING CONSTRUCTION & REMODELING
Free Stall Barns • Tie Stall Barns
Heifer Barns • Calf Barns • Robotics
Special Needs • Manure Handling
Quality & Value in Construction
(800) 845-3374 **FARMER BOY** FarmerBoyAg.com
✓ Parts You Need. ✓ Brands You Know. ✓ Prices You Can Afford.

Specializing in construction & renovation of agricultural buildings
Dairy Facilities • Pole Barns • Free Stall Barns
Concrete Work • Reroofing • Horse Barns
WHITE HORSE CONSTRUCTION
1-888-385-2360 • 1-610-593-5559

E&F Ag Systems
Ag Construction & Equipment
New freestall & heifer barns.
Freestall barn renovations.
We specialize in all types of dairy curtains.
2812 Old Phila. Pk. (717) 768-0304
Bird in Hand, PA 17505

King
Premier Dairy Facilities
Dean Hoover
King Construction Co., LLC Office: (717) 354-4740
525 Hollander Rd. Cell: (717) 304-4993
New Holland, PA 17557 dhoover619@comcast.net

Building Contractors:
Our directory of building contractors runs the 2nd and 4th weeks of each month. Call our advertising department to find out how to be included.
717-656-8050

HOOF-TRIMMER CHICKEN BBQ
(Everything provided)
July 13th, 12:00 p.m.
Address: Paul Neer Farm
43 Starlight Ln., Belleville PA 17004
RSVP By July 5th
Paul (c) [717-994-1636](tel:717-994-1636) (h) [717-935-5608](tel:717-935-5608)

Power Systems Electric Inc.
Emergency Generator Systems & Service
885 South Railroad Street, Myerstown, Pa 17067
Sales, Service, & Rentals
Providing service for most brands
Maintenance Programs
New & Used Gen Sets, Transfer Switches, PTO Gens.
24 HR EMERGENCY SERVICE
info@psegenerators.com
www.psegenerators.com
For all your generator needs call (717)933-5617

LANCASTER COUNTY

Show and field night scheduled

Show entries are due July 1
 QUARRYVILLE, Pa. — Entries for the Lancaster County Holstein Association's Show are due on or before July 1st. The show will be held on Tuesday, July 16, at the Solanco Fairgrounds in Quarryville, starting at 9 a.m. For additional information or entry forms please contact committee chairman Robert Wenger. 717-471-3790 or wengdale@frontier.com

Field night is August 8
 LITITZ, Pa. — The annual Lancaster County Holstein Club Field Night is scheduled for Thursday evening, August 8, at 6 p.m. at the Jonathan Glick's farm, 1148 East Oregon Road, Lititz. Esteemed breeder and Holstein USA Board Director John Burket of East Freedom, Pa., will give a short presentation and officiate the judging contest.

This scholarship deadline is July 15

HARRISBURG, Pa. — The All-American Dairy Foundation is pleased to announce that applications are being accepted for the Arthur W. Nesbitt Scholarship. It will be awarded at the 2024 All-American Dairy Show to be held September 13-18 at the Farm Show Complex in Harrisburg, Pa.



Arthur W. Nesbitt

This is a \$1000 college scholarship and is awarded based on academic achieve-

ment and participation in youth events at the All-American Dairy Show.

Applications are due July 15th and can be found at. <https://www.allamericandairyfoundation.com/arthur-w-nesbitt-scholarship.html>

This scholarship is awarded in honor of Art Nesbitt, former executive director of the Pennsylvania Holstein Association and retired chairman of Nasco.

King Barn — from page 7

visitors until October 26th on Saturdays from 10 a.m. to 3 p.m. and on the fourth Sunday of each month from 1 to 4 p.m. Admission is free. Additional information is available at www.mooseum.org

The MOOseum exhibits cover four themes: breeds that were popular with the County's very successful dairy farmers, scale model of the King farmstead and extensive display of period household items, dairy artifacts that demonstrate the progression from hand milking to the introduction of milking machines and robotic milking, and the transport

of milk from the farm to the consumer.

Visitors learn about the 600-plus individual dairy farms that shipped milk at some point during the last 100 years and the rise of dairying as the leading industry in mid-1900s and the decline of dairying to just three dairy operations left in Montgomery County today.

The MOOseum has something for all ages with a room filled with books and farm style toys for younger visitors and a craft room. Special guided group tours on weekends or weekdays are available by calling 301-254-6575 for a reservation.

The MOOseum is all volunteer and welcoming visitors to see and hear the dairy story is at the heart of their work throughout the year.




Bernie Morrissey and Former State Senator Mike Brubaker invite you to a reception honoring

Congressman Glenn "GT" Thompson

Chairman, Agriculture Committee; Senior Member, Education and Labor Committee; Dean of the PA Congressional Delegation


Wednesday, June 19, 2024 | 5:30 PM

Yoder's Restaurant & Buffet | 14 S. Tower Rd, New Holland, PA

Sponsorships are available | Contact Bernie Morrissey at bernie@insuringyourfuture.com or call 9 am – 9 pm 610.693.6471
 Or Mike Brubaker at mike@principledstrategiesllc.com


Contributions to Friends of Glenn Thompson are not deductible as charitable contributions for Federal income tax purposes. Federal law requires Friends of Glenn Thompson to use our best efforts to collect and report the name, address, occupation, and employer of any individual who contributes more than \$200 in an election cycle. Not printed at government expense.

Paid for by Friends of Glenn Thompson



MANUFACTURER OF BALE WRAPPING EQUIPMENT
CUSTOM FABRICATION & REPAIR WORK

54 Christiana Pike
 Christiana, PA 17509
 610-593-6112
 John S. Miller, Prop.



The **FASTEST**
and **EASIEST**
way to keep gutter
grates clean!

Keystone Concrete Products, Inc.
 477 E. Farmersville Rd.
 New Holland, Pa. 17557



(717) 355-2361 - corporate office
 (717) 355-9548 - fax
keystoneconcreteproducts.com

NEED THAT BUNKER? CALL ASAP TO RESERVE YOUR WALLS!!!

Secure
Cover
Dealer

Agricultural Pre-cast Products Available:




Financing
Available



T & L Shaped Precast walls
8'6", 12'6" & 16' high



Straight Back J-Bunk



Slant Back J-Bunk



H-Bunk



Precast Concrete Box Culverts



Cattle "Waffle Slat"
Moisture cured, 8000 psi concrete
New 8" thick for Heavier Equipment



Cattle Guards
Avail. 12' & 16' Lengths

Offering a Full Line of Ag Seed

Forages - Cover Crops - Small Grains - Corn - Soybeans



Sorghum Partners
A BRAND OF SEM SEED COMPANY



Double Team
SORGHUM CROPPING SOLUTION

Double Team Grain Sorghum

- Superior grass weed control
- Improved yield potential

Sudangrass & Sorghum-Sudangrass

SweetLea 405 Sudangrass
- BMR 6, Photoperiod Sensitive, Fine stems, Wide leaves

SavorLea 471 Sorghum-Sudangrass
- BMR 6, Good vigor, Widely adapted, Great yielder

SunLea 209 Sorghum Sudangrass
- Biomass builder, Economical Forage or Cover Crop option

ST 2090 BMR BD Forage Sorghum
- Brachytic Dwarf, BMR, Short season

ST 2105 BMR MS Forage Sorghum (Male Sterile)
- Energy comparable to corn silage with 8 - 10% protein



J3817 GT Soybeans
 Excellent for Full Season or Double Crop
 Remarkable health
 3.8 Group Rating



LEABROOK AG
 "Helping You Cover Ground"
 2278 Leabrook Rd. Lancaster, PA 17601
 (717) 898-9576















U.S. Senate Republicans put whole milk in their farm bill framework

U.S. Senator John Boozman (R-Ark.), ranking member of the U.S. Senate Committee on Agriculture, Nutrition, and Forestry, unveiled the Senate Republican-drafted farm bill framework as a title-by-title overview and summary late Tuesday, June 11. In a press statement, the Ranking Member said it “answers the call for a farmer-focused farm bill.”

Like in the House Ag Committee-passed farm bill, the Senate Republican farm bill includes bringing the choice of whole milk back to our nation’s schools. It is listed among the ‘other priorities’ identified in XII as follows: “Providing additional options for students by allowing nonfat, reduced fat and full fat milk in school meals.” We hope the full legislative language mirrors the House bill closely in all aspects.

The Senate Republican bill also increases authorization of funding for Dairy Business Innovation Initiatives that support the development, production, marketing and distribution of dairy products. Like the Senate Democrat’s framework and the House Ag Committee bill, Boozman’s framework makes improvements to Dairy Margin Coverage and requires biennial cost surveys by dairy processing plants.



Like the House Ag Committee bill, the Senate Republican framework directs the Secretary to modify the Class I mover to improve milk pricing formulas.

As for the Dairy Forward Pricing Program, the House Ag Committee bill extends it once again, but the Senate Republican framework makes it permanent. This has not been a much-discussed issue in the past; however, as more dairies become involved in forward contracting, questions of ‘captive supply’ emerge. The program allows forward contracted manufacturing milk to be pooled on Federal Orders without obligating the handler to pay more than the contracted price, even when it is below the FO minimum.

U.S. Dept. of Defense SLAM project to fund fermented protein, cultivated meat

According to the most recent issue of *Vegconomist*, the U.S. Dept. of Defense’s manufacturing innovation institute, Bio-MADE, released a call for proposals to “develop sustainable

food and material solutions for military operations through its Sustainable Logistics for Advanced Manufacturing (SLAM) Project.” With grants from \$500,000 to \$2 million, the SLAM project seeks to “address the causes or impacts of global climate change, including through fermented proteins (fake dairy analogs) and cultivated meat (lab created fake meat).” The National Cattlemen’s Beef Association immediately condemned the DoD’s research grant that will fund cultivated meat for the military. No word yet from dairy groups about the funding of fermented protein dairy analogs.

Cl. III milk futures up across the board

Class III milk futures moved higher again this week, pretty much across the board. The biggest gains were in the 2024 months, slight gains in 2025 contracts. Class IV was mixed and mostly lower. The biggest declines were in the fourth quarter 2024 months. On Wed., June 12, Class III milk futures for the next 12 months (Jun24-May25) averaged \$19.69, up 26 cents from the previous Wednesday. The 12-month (Jun24-May25) Class IV milk futures average was at \$21.38, down 21 cents from the previous Wednesday.

Spot cheese, why higher

On the CME daily spot cheese market this week, blocks and barrels both moved higher with blocks back into the \$1.90s and barrels topping \$2.00. The 40-lb block Cheddar price was pegged at \$1.9375/lb on Wed., June 12, up 7 cents from the previous Wednesday. With 8 loads trading the first three days, the weekly average stood at \$1.9233/lb. The 500-lb barrel cheese price gained 7 cents, pegged at \$2.01/lb Wednesday. With 8 loads trading over three days, the weekly price average stood at \$1.9958/lb. Dry whey gained a whopping 4 cents, pegged at 48 cents/lb with just a single load changing hands Monday through Wednesday.

Butter firm, active powder market loses penny

The rollercoaster butter market wound up firm at midweek as the CME daily spot price pegged \$3.1050/lb Wed., June 12, up a penny from the previous Wednesday. The weekly weighted average stood at \$3.0967/lb., with 9 loads traded Mon.-Wed. The powder market was extremely active again this week, trading 25 loads in the first three days with the spot price for Grade A nonfat dry milk (NFDM) pegged at \$1.19/lb Wed., June 12, down a penny from the rally on the previous Wednesday.

Weekly NDPSR mixed, trails spot market

Trailing the CME spot market on everything but barrel cheese, the weekly National Dairy Product Sales Report (NDPSR) for week ending June 8, reported the weighted averages of these Federal Order formula commodities as follows: Butter \$3.0713/lb, NFDM \$1.1664/lb, 40-lb block Cheddar \$1.9176/lb, 500-lb barrel cheese \$2.0569/lb, and dry whey \$0.4106/lb.

May blend prices mixed, Upper Midwest gets some relief from improved Class III price

Federal Milk Marketing Order Statistical Uniform Prices (SUP) for May showed uneven trends. May milk settlement checks recovered in the Upper Midwest and California, where dismal cheese prices had driven Class III milk value down into the abyss for those producers in the first four months of the year. The SUP in FO 30 and 51 saw welcome gains, finally, of \$2.79 and \$2.06, respectively in May vs. April. The Southwest (FO 126), with substantial Class III assets saw the blend price gain \$1.67 per hundredweight. Other multiple component pricing FOs made gains ranging from 71 cents in the Northeast to \$1.44 in the Central U.S.

The Class I markets saw gains in April when other marketing areas had losses. For May, the Appalachian Order is near steady vs. April, while the Southeast is off 19 cents and Florida down 48 cents. May 2024 FO SUP’s (at 3.5% BF) and PPDs were announced June 12 as follows:

FO	BLEND	CHANGE	PPD	CHANGE
Florida (6)	\$23.46	-0.48	N/A	N/A
Southeast (7)	\$22.08	-0.19	N/A	N/A
Appalachian (5)	\$21.77	-0.03	N/A	N/A
Northeast (1)	\$20.89	+0.71	+2.34	-2.25
Southwest (126)	\$19.89	+1.67	+1.34	-1.38
Mideast (33)	\$19.45	+1.18	+0.90	-1.87
California (51)	\$19.40	+2.06	+0.85	-0.99
Central (32)	\$19.14	+1.44	+0.59	-1.61
Upper MW (30)	\$18.74	+2.79	+0.19	-0.26

Last call to support Whole Milk champion GT in June 19 fundraiser event

“GT has been a friend to those who produce our nation’s food and those who consume it. He understands dairy and agriculture. He has been a dedicated champion for the Whole Milk for Healthy Kids Act. Now is the time to come together to help make sure he and others who share these values are elected and re-elected to the Congress,” says retired businessman and dairy advocate Bernie Morrissey. He is co-chairing an important fundraising reception in honor of House Ag Chairman and Dean of the Pennsylvania Congressional Delegation, Rep. GT Thompson on Wed. evening, June 19 at Yoder’s Restaurant in New Holland. Pennsylvania State Rep. John Lawrence, author of the Whole Milk for Pennsylvania Schools Act will also be an honored guest. To contribute, mail a personal check made out to Friends of Glenn Thompson, c/o Bernie Morrissey, 4 Austin Drive, Robeson, PA 19551. These contributions are not tax deductible. Those wanting to attend or purchase a table or seats, please see the ad on page 13, or call Bernie 9 a.m. to 9 p.m. at 610-693-6471.

CUSTOMER APPRECIATION WEEK

Monday June 24 thru Friday June 28, 2024

5% OFF

- 5% OFF NEW & USED EQUIPMENT*
- 5% OFF PARTS & HOSE FITTINGS
- 5% OFF LAYFLAT HOSE
- 5% OFF REPAIRS & REBUILDS

Scheduled this week to be done by Sept. 30, 2024

FREE CHEESE
W/QUALIFYING PURCHASE**

FREE REFRESHMENTS & ICE CREAM
ALL WEEK!

DEVOUR COMPOSTER
COMPOSTING SOLUTIONS

NUTRIFLO
LIQUID MANURE PUMPS
Formerly by Conestoga MFG

FOR SAFER FIELD LOADING CONSIDER A LOADING PIPE ON WHEELS 5% OFF. In Stock.

Convert Your Own Loading Pipe with our Loading Pipe Conversion Kit. 5% OFF!

*Parts and equipment coupons valid 6/24/2024 - 6/28/2024 **Spend \$1000.00 or more and get a 5lb. local made cheese FREE. ELS Mfg. will not be responsible for shipping of free cheese. Customer must pick up during sale week.

Plan now to attend *Horse Progress Days* to see a Drag Hose spreading demonstration.

ELS MFG
LIQUID MANURE HANDLING SOLUTIONS
5270 Amish Road | Kinzers, PA 17535

LIQUID MANURE HANDLING EQUIPMENT
"QUALITY EQUIPMENT FOR THE LONG HAUL"
717-442-8569

Morrissey Insurance

After running a 5K, no doubt about it, Jason Morrissey Got Milk!

"Insuring Your Future since 1971"
MORRISSEY INSURANCE

890 N. Reading Rd.
Ephrata, PA 17522
www.insuringyourfuture.com
800-422-8335



by Cherlyn Beachy

Smoothies & Milkshakes

On hot Summer days, a cool smoothie or milkshake hits the spot.



Sunrise Fruit Smoothie

- Yellow layer-
- 3/4 cup water
- 1 frozen banana
- 3/4 cup frozen pineapple
- Red layer-
- 3/4 cups water
- 1 frozen banana
- 3/4 cup frozen strawberries
- Blue layer-
- 3/4 cup water
- 1 frozen banana
- 3/4 cup frozen blueberries

Place ingredients for the red layer in the blender. Blend until smooth. Pour into 2 or 3 glasses depending on the size. Rinse blender and repeat for each additional layer. To achieve the layered effect, pour the smoothie over the back of a soup spoon. Serve immediately.

Chocolate Banana Milkshake

- 2 frozen bananas
- 8 tablespoons powdered chocolate
- 3 cups milk
- 1/2 teaspoon vanilla

Place frozen banana in the blender. Add remaining ingredients. Blend until smooth. Pour into glasses and serve. Top with whipped cream if desired.



Blueberry Yogurt Smoothie

- 2 cup plain, unflavored yogurt
- 2 cup blueberries (or strawberries, peaches, etc.)
- 1/2 cup milk
- 1 tablespoon honey
- Ice

Place yogurt, fruit, milk, honey, and a handful of ice in the blender. Blend until smooth.

Coffee Milkshake

- 1 cup cold brewed coffee
- 4 scoops (about 3 cups) vanilla ice cream
- Whipped cream for topping

Blend coffee and vanilla ice cream in a blender until smooth. Add a little milk if it is too thick and a little more ice cream if it is too thin. Pour into glasses and top with whipped cream.



Good-For-You Green Smoothie

- 1 1/2 cup plain, unflavored yogurt
- 1/2 cup pineapple juice, or milk
- 1 apple, peeled and cored
- 1/4 cup ground flax
- 1/2 cucumber or zucchini
- 3-4 ripe bananas
- 2 handfuls spinach or kale
- 2 tiny sprig basil

Mix yogurt, pineapple juice, cucumber, and apple in the blender until smooth. Add remaining ingredients. Blend until smooth. Taste- add a little honey if needed. Leftovers can be stored in the fridge.



Providing High Value Ventilation Systems for Dairy, Layer, Broiler & Swine Facilities

Our AG Engineers can design the right ventilation system for your barn!

Contacts: Nevin Wagner, Cell# 717-475-2721
 Jacob Steidinger, #717-537-1309 Ext.705
 Errol Moyer, # 717-537-1309 Ext.704
 Website: <https://www.ApexAgTek.com>

EC MOTOR DIRECT-DRIVE FANS

- No belts, bearings or tensioners to maintain
- Simple variable speed or 2-speed control
- Assembled in the USA

Consider Apex Ag-Tek Direct-drive Fans for your 2024 Dairy Barn Project



Circulation Fans:

27", 30", 39" & 51" Models
 EC Motor Direct-Drive



Exhaust Fans:

30", 36", 39" & 51" Models, EC Motor Direct-Drive
 Composite Housing, Composite "Ultra Shutter"



We salute dairy farmers during June Dairy Month and all year long!

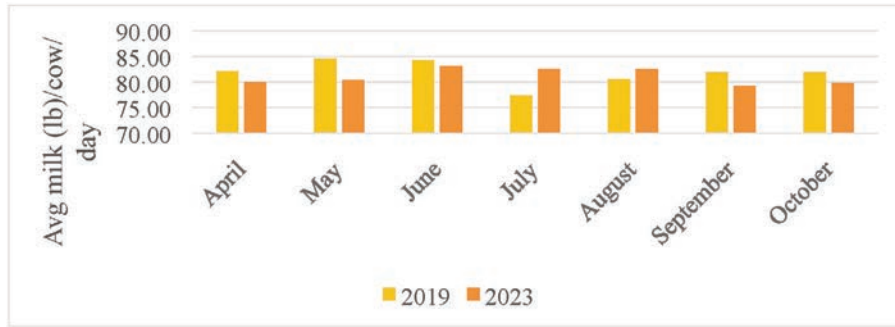


Figure 5. Average milk production per cow per day shipped from the farm before (2019) and after (2023) installation of fans. Effectiveness of Fans for Heat Stress Abatement on Lactating Dairy Cows in NNY project, NNYADP, 2023.

Heat stress

from page 5

creased rates of lameness during the episodic heat events.

The data collection includes environmental temperature and relative humidity, reticular temperature of the cows in the study, lying and standing time, lameness, bulk tank yield and milk composition, and measures of reproduction performance.

"In our earlier projects, improving air movement on one farm resulted in an hour more of lying time by the cows. One hour of increased lying time has been equated to the opportunity to gain 2 to 3.5 pounds more milk per cow per day," Ballard explains. "Our date in 2023 in terms of lameness, milk pro-

duction and composition, and reproduction impact clearly showed the economic value from the use of fans."

The economic impact of climatic heat stress alone on the U.S. dairy industry was estimated at \$900 million in annual losses in a research report published by R. J. Collier et al. in the ADSA Journal of Dairy Science in 2006.

The NNYADP-funded research over time suggests the question of whether recommended windspeed to increase animal comfort and mitigate the physiological impact of heat stress on dairy cows in northern New York needs to be increased over current recommendations.

Table 3. The impact of heat events on reticular body temperature (°F) and lying behavior of dairy cattle on a farm before and after installation of fans: Effectiveness of Fans for Heat Stress Abatement on Lactating Dairy Cows in NNY project, NNYADP, 2023.

	COOL	HOT	SE	P-value
THI	< 65	≥ 72		
Reticular Body Temperature (°F)				
No Fans (2019)	101.7	103.3	0.15	<0.01
With Fans (2023)	102.4	103.5	0.07	<0.01
Lying Time (Hours/day)				
No Fans (2019)	11.2	8.9	0.33	<0.01
With Fans (2023)	12.2	10.4	0.28	<0.01
Lying Bouts (#/day)				
No Fans (2019)	8.7	9.3	0.64	0.02
With Fans (2023)	9.1	10.7	0.35	<0.01
Lying Bout Duration (min/day)				
No Fans (2019)	86.4	65.5	4.8	<0.01
With Fans (2023)	81.3	63.3	4.2	<0.01

Youth award nominations invited

HARRISBURG, Pa. — The All-American Dairy Foundation is welcoming nominations for the Robert D. Heilman Youth Achievement Award which will be presented at the 2024 Premier National Junior Show to be held on September 16.

This award recognizes an outstanding youth passionate about the dairy industry who works hard, helps others, and maintains a positive attitude regardless of the circumstances.

The Foundation desires to recognize a youth whom people may not always notice, who does not always win big awards, but

takes in the whole experience and is always learning and improving. To be eligible, nominees must be 16 years old and must have participated in youth activities in at least three prior All-American Dairy Shows. The award recipient will receive a check for \$500 and a plaque.

Anyone is welcome to nominate a deserving youth and the award recipient will be chosen by the All-American Dairy Foundation Board of Directors. Nomination forms can be downloaded from the following link: <https://www.allamericandairyfoundation.com/robert-d-heilman-youth-achievement-award.html>

Patz Summer Promos

NOW OFFERING DISCOUNTS ON ALL MIXERS, ALLEY SCRAPERS, AND CROSS GUTTER MANURE AUGERS!

SEE LOCAL PATZ DEALER FOR MORE INFORMATION.

JUNE IS DAIRY MONTH. THANK YOU, FARMERS!

Patz CORPORATION POUND, WI 920-897-2251

PENNSYLVANIA

Mercersburg	Cedar Crest Equipment LLC	717-660-0060
Myerstown	Cedar Crest Equipment LLC	717-866-1888
Quarryville	Cedar Crest Equipment LLC	717-529-2782
Troy	Fallbrook Fabrication	607-426-0592

VIRGINIA

Harrisonburg	C&C Farmers Supply Corp.	540-433-8532
--------------	--------------------------	--------------

NEW YORK

Collins	A.R. Timmel	716-532-2040
---------	-------------	--------------

Territory Sales Manager

Paul Kratz • 920-897-9212
paulkratz@patzcorp.com



CERTIFIED ORGANIC CATTLE WANTED

NICHOLAS MEAT LLC

Modern Meat Processor Paying a Premium For Your Certified Organic Cattle

Purchasing on Dressed Weight and Grade Basis

Nicholas Meat LLC is an approved Certified Organic Meat Processor. We are looking to purchase all your Certified Organic Cattle. Customers can deliver cattle to the plant Monday through Friday 7 A.M. to 1:30 P.M. Nicholas Meat LLC has also established several collection points.

Cattle can be taken to:

Vintage Sales Stables, Inc.

3451-3457 Lincoln Highway East, Paradise, PA 17562
Every Thursday from 9 A.M. to 3 P.M.

Weikert Buying Station

721 Carrolls Tract Rd., Fairfield, PA 17320
Mondays from 9 A.M. to 4 P.M.

New N.W. Sales Company

2006 Mercer-New Wilmington Rd., New Wilmington, PA 16141
2nd and 4th Monday of each month.

Belleville Livestock Market

26 Sale Barn Lane, Belleville, PA 17004
Every Wednesday.

R&C Calf Farms, LLC

13071 Emerson Rd., Applecreek, OH 44606
Mon. -Thurs. 9 A.M. to 2 P.M. (Behind sale barn in Kidron)

Please bring a copy of your Organic Certificate with each shipment!

Please call the number below to inquire about these collection points or to schedule your sale of Certified Organic Cattle to Nicholas Meat, LLC.

NICHOLAS MEAT LLC

508 East Valley Road, Loganton, PA 17747
Please call Nicholas Meat LLC – 570-725-3511



McWilliams Warrior Raine (EX-92) was named grand champion at the Pennsylvania Holstein Association's Spring show in April, then went on to place second at the New York Spring Show. She was bred by Sam and sold as a heifer to Scott Yocum and Katie Darnell, but is boarded where she was born.



McWilliams Capital Z Susan (EX-94-2E) is the dam of McWilliams Shakira Red, who placed first in her class and stood as honorable mention junior champion at last year's World Dairy Exposition. Since then, she captured the junior champion title at the Western Dairy Expo held in Saskatoon, Saskatchewan in April.

Determination _____ from page 3

Lambda and Lambda sons as among his favorites.

"We like to keep the old cows around and get daughters out of them, he added. Naming two stand-outs, they are McWilliams Damion Grace (EX-94-2E) and McWilliams Warrior Raine (EX-92).

In-vitro fertilization (IVF) has doubled his heifer crop, which is key to his merchandising ambitions. "We sell about 50 head a year," he noted. He remembers being in Madison with a spring yearling 10 years ago. "People took notice," he said with a smile. What's more, the price was right and he sold her. "She's been sold five times since then," he added, "each time for more money."

Simplicity was an important consideration for Sam when the new barn was built. Therefore nothing is automated. He designed the barn himself after seeing several examples on a guided tour, courtesy of Dennis Graham of Graham's Dairy Supply in Greensburg, Pa. Not being gifted in the drawing of blueprints, he got Michael Creek of Palmyra Farm, Hagerstown, Md., involved with that task.

Asked why he didn't include robots in his new barn, Sam's reaction was almost as though he had been insulted. He is a cow man and showman, after all. As such, he prefers his hands-on approach. "I want no parts of a robotic milker ... my show cows are the reason," he declared. "I don't think they go well together."

This year's PHA picnic is the first one to be held since the Kline Family hosted it at their well-known Klinedell Farms near Myerstown in 2017.

Why host the picnic? Sam says he had no choice. After having earned abundant recognition for his calves, heifers and cows at last year's All-American Dairy Show in Harrisburg, Lolly Leshner of Way-Har Farms approached him and suggested the idea. "She told me I had no choice," he laughed, jokingly adding "blame it on her!"

What words of advice might he have for others, particularly young people?

Answering modestly, he said: I guess I always thought stay determined. When someone tells me I can't do something or it won't happen ... work twice as hard to prove everyone wrong and reach goals and always set bigger ones."



Most noteworthy about this picture is that there are two manure alleys ... one where the cows are standing and the other on the far side. In between those two lanes are the box stalls (near) with freestalls in the distance. The wide feed alley makes for easy and efficient delivery of rations. Nothing in the barn is automated.



Simplicity was what it was all about for Sam Williams when he designed the barn. He's more than pleased with the improvements it offers, especially compared to the old barn.

"Ventilation is so important!" he declared, "as is cow comfort". The barn offers both, not to mention other benefits.

Barn photos by Dieter Krieg



The 12-year old calf facility has given hundreds of calves a great start to success. The majority of calves are sold to other Holstein enthusiasts.

Merchandising is an important part of the program for Sam, who prefers to sell the best.

1 Services

RELIEF MILKING IN YOUR tie stall barn. Holidays also. Lancaster Co., Pa. 717-335-2563. (6/14)

FARM INSURANCE: barns, equipment, hay and grain storage, Workers' Compensation, farm stands and stores, vehicles and farm homes. N.Y., Pa. and Va. Call Alec Pandaleon at 845-242-0113.

REPAIRING TRACTORS and farm machinery. Complete tractor overhauls and engine repair, dealer for quality aftermarket parts. Tiger and granite lights. Har-sue Repair, New Holland, Pa. 717-355-0715. (6/21)

CUSTOM HEIFER RAISING Good quality forage mineral and hay. Room for 50-80. Somerset, PA. 724-953-5931. (7/12)

CUSTOM TUBELINE BALE wrapping. Lancaster Co., Pa. 717-490-4465.

AG PHOTOGRAPHER - senior, family, natural cattle portraits. Sales, herd dispersals and ag event photography coverage and albums. Based in Lancaster, Pa. A Farmgirl's Dream Photography. 717-824-1320.

BALING SERVICES - CUSTOM 3x3 and round baling, along with individual wrapping. Out of southern Lancaster, Pa. 717-826-3775.

BOB & MILLIE'S DISCOUNT signs. The cheapest guys in town. Free delivery on all sign orders. bobthesignman@yahoo.com. Real Estate-Construction-Banners-Yard Signs-Decals-Magnetic Signs-End of Lane Farm Signs. appletreesigns.com. 410-708-1341.

COMPOSTECH LLC. IS A local Honey Brook business, making and selling organic compost at \$30 per cubic

yard. Call Dave at 610-441-5154 to schedule a pick up. Also taking horse manure for free, must be dropped off.

LOWER SCC & IMPROVE conception. Highly effective, 35 years of time tested results and satisfied dairymen nationwide. No withholding ever feed additive, low cost. Call AG, Inc. today. 920-650-1631. www.alphageneticsinc.com

DAIRY PRODUCER - would you like to lower SCC and mastitis rates, provide milking training, breach the language barrier and improve parlor performance? Call Adolph Dossman at 240-286-8996.

INNOVATIVE DAIRY Nutrition - specializing in forage planning to maximize production and optimize herd health through advanced nutrition. To improve your profits, contact Matt at 717-729-4530

REDUCED PRODUCTION? Heat stress? High SCC? Scours? Proven effective solutions to your herd's health needs, no withholding. Call the Dairyman's Helper. 800-829-7512.

CUSTOM COLLECTING - Call for prices. 301-491-3154. Triple-Hil Sires.

RELIEF MILKING-farm siting. Tie stall or parlor. Feeding and young stock care. References available. Adrian

Horning 717-466-9099. South-Central, Pa.

KANN'S MILKING SERVICE Franklin & Cumberland Co. 30 years experience, references available. Ryan L. Kann, 717-816-1920.

BARN FULL? WITH 8+ years experience raising heifers, I am the solution to your problem. Space available now. Call today to discuss this opportunity. 717-860-8867.

CUSTOM HEIFER RAISING. Weaned calves to calving. 19 years experience. Modern housing, free stalls, AI breeding, TMR, monthly vet visits. Lebanon Co., Pa. 610-451-3006.

GARDNER CUSTOM HEIFER raising. 40 years experience. TMR in fenceline feeders with lockups, dairy veterinarian manages, adolescent to springers, competitive prices. 540-871-0246, dlggar@aol.com, gardnerheifers.com.

CUSTOM HEIFER RAISING. 300-400 head capacity. AI breeding, hauling available. We do not have state of the art facilities but are committed to an accelerated feeding program. Call for pricing. Reach us at 240-291-0286.

HEIFER RAISING SERVICES offering full health care program, excellent AI breeding program, activity monitor

collars, balance ration, pasture for older heifers. Lancaster Co. 717-940-9435.

CUSTOM HEIFER RAISING. Good quality forages. Minerals and hay in TMR. Room for 150-200 head. Troy area. 570-220-4542.

HEIFER BOARDING - Sand bedded freestalls. Corn silage haylage and hay included. \$2/hd/day. 607-382-3633.

HORSE BOARDING available, Willow Street, Pa. area, Lanc. Co. 717-380-7612.

ADAM'S HOOF TRIMMING. 22 years of experience. 717-813-1358.

Classifieds

"Say you saw it in FARM SHINE"

MID-ATLANTIC HOOF Trimming - providing farmers professional hoof care in Maryland, Virginia, Pennsylvania and surrounding states. Call Mikey Barton at 518-567-8046 today for inquiries/scheduling.

HASTINGS HOOF TRIMMING is looking for clients in Pa., N.Y. and Ohio. Call or text 315-283-2717 for a quote.

CATTLE HOOF TRIMMING, Western, Pa. Stand up chute, over 10 years in business. Looking for new clients. 814-279-7932, ask for Russell.

TSHUDY'S HOOF TRIMMING. Quarryville, Pa. Serving Southern Lancaster, Chester and York counties since 2003. \$11/cow, free wraps. Hydraulic tilt table. 717-917-8715.

Special Dairy Sale

Approx. 100 head sell

SALE HELD AT FISHER'S QUALITY DAIRY SALES
3304 OLD PHILADELPHIA PIKE, RONKS, PA.

THURSDAY, JUNE 20 • 7 P.M.

We will be selling many good, young, fresh cows and heifers, Reg. and grades, from overstocked herds and heifer raisers, *including:*

- Reg. 3 yr. Helix, fresh 5-15, 100+ lbs., from Cedar Crest prefix.
- Reg. 3 yr. Byway, fresh 4-16, 118 lbs. Dam EX-92 Sanchez 5-02 365 33,220 4.4 1451 3.0 988.
- Reg. A2A2 2 yr. Jersey, just fresh. Sire Chocolate Tier. Dam EX-90, 3rd EX-93, 4th EX-92, 5th EX-94.
- 10-12 top, young, fresh cows and heifers from one farm with 28,000 lb. RHA.
- Reg. 2 yr. Gamechanger, fresh 4-20, 90 lbs.
- A group of young, mature cows sell, milking up to 130 lbs.
- 6 Reg., young cows and heifers, fresh or springing, sell from one herd with 25,000 RHA.
- Several young, fresh, grass fed Jerseys sell.

Plus many more good, young cows with lots of milk. Free chocolate milk • Not responsible for accidents

Sale managed by: **FISHER'S QUALITY DAIRY SALES**

Jonas Fisher • 717-768-3297

Auctioneer - Dave Stoltzfus - AU005655 • Pedigrees - Dan Albright

FINE GROUND *Wood Bedding*

Dry, Absorbent BEDDING For Sale

14 yd, 30 yd, and 110 yd loads
Call for Pricing

Buy in bulk and save!

BEILER INDUSTRIES 717-768-7667

June is Dairy Month

Free milk shakes all day!

NEW HOLLAND SALES STABLES, INC.

Free milk shakes all day!

Located 12 Miles East of Lancaster, PA. Just Off Rt. 23, New Holland

DAIRY COW & HEIFER SALE

WEDNESDAY, JUNE 19TH • 10:30 A.M.

Herd #1 - 26-cow tie stall herd from N.Y. State

All Registered. Lots of deep pedigrees. **20 Holsteins:** 13 milking, some over 100 lbs. 2 dry cows. 5 springing heifers. **6 Jerseys:** 4 cows, 2 bred heifers, 1 cow EX-93 pts. Vacc. twice yearly. DHIA records at ringside.

Herd #2 - 30 Holstein cows from free stall parlor herd in Berks Co.

Averaging 65-70 lbs. Mostly bred for fall calving. 6 dry due in July.

Consignors: Please send all info with truckers for the catalog.

For more information, contact dairy reps:

Aaron Martin, 717-445-4825 (home); Bill Hough, 973-224-0204 (cell).

REMINDER:

Thank you - N.H.S.S.

Friday, June 21st, starting 4 p.m. Special Driving & Draft Horse Sale.

Sale Managed By

New Holland Sales Stables, Inc.

Barn 717-354-4341 Fax 717-355-0706 • David Kolb, Mgr. 61L

800+ HEAD EXPECTED

PENNS VALLEY LIVESTOCK

JUNE 28TH 2024

ITS OUR FAVORITE TIME OF THE YEAR! SPECIAL PONY GIVEAWAY SALE! 6 PONIES WILL BE GIVEN AWAY TO A FEW LUCKY CHILDREN 12 AND UNDER. GRAND PRIZE WILL BE A FULL PACKAGE, PONY, CART, AND HARNESS! MUST BE PRESENT TO WIN, SHOW UP GRAB A TICKET FOR THE KIDS AND ENJOY THE DAY. WE ENCOURAGE CONSIGNERS TO BRING HORSES IN THE NIGHT BEFORE ON THURSDAY JUNE 27TH. KITCHEN OPEN ALL DAY FRIDAY!

2 RINGS! FREE ICECREAM! WHILE SUPPLIES LAST

Call (814) 364-1796 the Wednesday before the sale to catalog your horse.

Auctioneers
Attee Shetter - AU005270
Vernon Yoder - AU005267

Erica Smith
David Bierly
(814) 364-1796

SALE ORDER
RING 1 7:30AM AS-IS HORSES
RING 2 9AM TACK
9AM, WORK HORES
11AM PONIES
12PM DRIVING HORSES

2925 Penns Valley Pike Centre Hall Pa 16828



SUMMER SALES EVENT!

JUNE 17 - 29

Discounts on NEW In-Stock Units!



- 9,500 Gallon
- 7,300 Gallon
- 6,300 Gallon
- 5,350 Gallon
- 4,300 Gallon

- 10" 42' Lagoon
- 8" 42' Lagoon
- Multi-Purpose

- 270
- 350
- 420
- 500
- 950

- SB450
- SB500
- SB600
- SB700
- SBX800

- 175
- 285
- 350
- 675
- Bale Carriers

Discounts on Used Units!



RMH PREM. 21



Kuhn Knight PSC161



GEA 5,800



GEA 6,300

- 2010 GEA 6,300
- 2015 GEA 6,300
- 2019 GEA 7,300
- 2016 6"X9' Super Pump

- GEA 5,300(New Tank)
- Kuhn Kight 5156
- JayLor 3574 Mix
- Kuhn Knight 8118

- 2020 CD 285
- GEA 42' Lagoon
- Kuhn Knight RC170
- Kuhn Knight VSL150
- 2017 Patz 350

- 2018 Patz 615
- 2018 Patz 620XH
- 2019 Patz 950
- 2013 Patz 950
- Penta 3020SD

CALL TODAY FOR DETAILS!!!



WWW.CEDARCRESTEQUIPMENT.COM

61 Elco Drive, Myerstown, PA 17067 • 717.866.1888

1106 Ashville Rd, Quarryville, PA 17566 • 717.529.2782

11120 Shimpstown Rd, Mercersburg, PA 17236 • 717.660.0060





**TO ALL OF AMERICA'S
DAIRY FARMERS...**

THANK YOU



**TECHNOLOGY
DRIVEN
NUTRITION**

Southeast PA
Regional Manager:
Lititz, PA
Scott Forbes
(717) 572-6182

Kirkwood, PA
Les Hershey
(717) 989-1808

Manheim, PA
Steve Kauffman
(717) 940-4474

Manheim, PA
Brent Neely
(717) 371-7391

Lancaster Area PA
Regional Manager:
Chad Martin
Brownstown, PA
(717) 314-2460

Lebanon, PA
Noah Gesford
(717) 805-4075

Newville, PA
Kyle Kotzmoyer
(717) 422-1356

Central/Western PA
Regional Manager:
Dan Ingle
Tyrone, PA
(814) 935-8610

Centre Hall, PA
Keith Hershey
(814) 571-8795

Kittanning, PA
Matt Smith
(724) 525-0334

Millmont, PA
Ken Heimbach
(570) 847-9150

Watsontown, PA
Jim Ulmer
(570) 490-4166

Winfield, PA
Keith McCool
(570) 847-8645

South Central PA
Hollsopple, PA
Nathan Spory
(814) 341-9134

Chambersburg, PA
Brian Horst
(717) 360-0483

Shippensburg, PA
Ed Okuley
(717) 816-6082

Area-wide
Tyrone, PA
Dave Russell
(814) 935-2640

Watsontown, PA
Don Sanders
(570) 713-4393

PA Warehouse
Lititz, PA
(717) 581-1558

"CAPTURING THE NUTRITIONAL VALUE IN FEEDS IS THE KEY TO PROFIT."