

FARMSHINE

We rise every week to cover farmers and agribusinesses

Farmshine • Volume 45, Number 36 • \$20 one year

Mailed the day before →

May 10, 2024



Storms of life did not steal her smile, her joy was in the Lord

By Sherry Bunting

My Mother loved babies, and they loved her. I think it was her joy.

In Isaiah 4:31, the wings of an eagle are mentioned. An eagle knows when a storm is approaching and will fly to a peak and wait for the winds. Then, when the storm hits, it uses that wind to pick it up and lift it above the storm so even though the storm rages below, the eagle soars above it, not escaping it, but using the winds of the storm to go higher.

How does this relate to the life of Shirley L. (Jacobs) Curry, my Mother? She waited on the Lord. She put her faith in her Saviour Jesus Christ, so that the storms did not overcome her.

Mom endured loss and tragedy, but those storms did not steal her smile because her joy was in the Lord. She waited on Him. She lived her life and continued to show kindness to others, with a smile and laugh that people remember.

She dug in and took care of my father for 8 years with a debilitating brain disease before the Lord called him home in 2001. Then, she began working in the care of others as a professional caregiver before retiring in 2017. The tragic loss of her mother, son and youngest daughter within a three-year span 2016 to 2019 was rough, and took a toll, but again, she waited on the Lord. Her joy was in Him.

Through her declining health in her last year, as the outer self was leaving, her inner self was being renewed. She didn't lose heart. Her sweet smile remained, and it is not only something those who knew her in health have observed, but also those who helped me care for her daily as her health declined -- that sense of humor, that smile remained.

Admittedly there were times of frustration -- we are human after all. The bottomline is she didn't lose her smile, her laugh, her grit, grace, and gratefulness. She would still laugh -- a belly laugh -- at the funny things great grandchildren did or said, the stories brought to her of what they were up to, the visits where she would read books or have them read to her, watch their puppet shows, eat the make-believe food they prepared for her of paper and ribbons in a stash of old pots and pans.

While in the hospital last August, after her private visit with the Chaplain, I returned to her room and found her praying sweetly in her sleep, simply calling Jesus' name, asking Him to take care of all the babies in the world... and



their parents.

She loved babies. Her biggest smiles were while holding them. The most beloved of jewels were the arms of little ones around her neck.

Yes, there were bad days, but she didn't lose heart, she waited on the Lord.

My Mother would want her life to be an encouragement to others, that if things don't go the way you planned, or dreamed, or when you lose your most precious loves, or have a day of trouble communicating what you want to say..

Thought it all her faith in her Saviour sustains. He was with her in the big things and part of her every day life.

He gave her wings that carried her through and over life's storms, not to escape them, but to get through them without losing her joy, her smile.

My Mother was called home to the Lord at 4:15 a.m. on Nov. 30, 2023 at the age of 84. Twelve hours earlier, we realized things had progressed, and while the hospice nurse and aide were helping me gather what I needed, she woke from a sleep, eyes wide open, flashing the most beautiful smile I have ever seen.

She looked at the three of us at her bedside and said: "One more day, and then we're going to have a party!"

Those last words are etched in my soul. Twelve hours later, I knew that she had seen -- she already knew where she was headed, to be with her Lord and Saviour, her parents, my father, my brother and my sister... celebrating.

My mother's smile...

Was beautiful and bright,

A twinkling star in dark of night...

The piece she leaves that never dies.

Joy found in simple pleasures of life,

Amid the struggle and strife,

That remain through time...

The warmth of long-simmered oatmeal,

Sprinkled with love -- just-so

The learning, the gathering, the places

we would go...

The way the Christmas season began

Always with a marathon sand tart bake.

She opened windows to faith --

The churchgoing, the choir singing,

Showing her love for the Lord

In her daily being.

My mother loved simple things.

A photograph, of course, a card sent, a word spoken,

A picture drawn, a flower picked, a page readied with

crayons from one of her great coloring books.

She loved the sunshine on her face,

The wings of birds over water taking flight,

The smoothness of a treasured seashell

peeking up through rough sand,

The color of a sunrise through her favorite tree,

The joy in a deep belly laugh at the funny things

kids say and do

The tenderness of a baby in her arms...

That life again begins anew.

Happy Mother's Day, and thank you for the opportunity to share my mother's smile, joy, and love for the Lord with all of you.

PERIODICAL • DO NOT DELAY

Be an ice cream explorer?	2
DHIA reports	14-17
Employment opportunities	12
Market Moos	4
Mama Cat	10

Mothers, grandmothers	7
NoBull legal battle	13
Obituary: Margie Ann Dick	9
PHA Spring show report	8
Whole milk sales rising	3

THE WEEKLY DAIRY FARM FAMILY MAGAZINE

I enjoy reading **real news.**
— D.S., Pennsylvania



We welcome you to send in your subscription request now. We are THE weekly dairy farm family magazine, since 1979.

Two Years \$38 • One Year \$20

Name: _____
 Address: _____
 Town: _____ State: _____ Zip: _____
 Phone or e-mail: _____ New / Renewal (Circle one)

Mail with payment to **FARM SHINE**, 342 E. Main St., Ste. 201, Leola, PA 17540

APPLY BY MAY 20
\$5000 to be paid to 'explorer' of Pa. ice cream trail

SYRACUSE, N.Y. — American Dairy Association North East and Pennsylvania Dairy Promotion Program plan to celebrate National Ice Cream Month in July with a Pennsylvania ice cream road trip, and are currently seeking an honorary chief ice cream officer (CIO) to promote the campaign.

The CIO will be paid \$5000 to travel across the state in July to visit about 20 on-farm creameries (the list is being finalized). The assignment is to submit video blogs, or vlogs, about their visits, document their journey across the Commonwealth, and create positive dairy content for ADA North East and Pennsylvania Dairy Promotion Program social media channels.

"Pennsylvania is fortunate to have many dairy farms that are meeting consumer demand for locally produced dairy products by making their own ice cream," said Pennsylvania Dairy Promotion Program Chair Lolly Leshner of Way-Har Farms, Bernville, Pa. "The summer ice cream road trip led by our chief ice cream officer is a fun way to bring positive attention to our industry and its hardworking farmers."

Applications are being accepted through TikTok or Instagram videos only, through May 20. The clips must showcase the applicant's creativity and marketing skills and describe why they should be selected as the candidate to go on an ice cream road trip.

Applicants must be at least 18 years old, be a U.S. citizen, have a valid U.S. driver's license, a vehicle and car insurance.

ADANE's annual report is online

SYRACUSE, N.Y. — American Dairy Association North East's 2023 annual report is available online and can be found by clicking on "Annual Reports" under the "About Us" section of AmericanDairy.com

The report details the Association's programs related to retail, youth educational programs in schools, consumer education and media outreach, farmer advocacy, hunger relief collaborations, environmental partnerships, dairy ambassador and princess programs, and national partnerships.

Financial records are also included in the annual report to outline the income and expenses of dairy farmer checkoff investments.

"The knock-offs just don't do it."

— Chuck and Sue Luchsinger



Chuck and Sue Luchsinger with son Charlie, grandchildren Liam, Quinn and Owen.



SILVER SPRING FARM
 The Luchsinger Family
 SYRACUSE, NEW YORK
 60 Registered Jerseys
 Grazing herd over
 15,000M 5.2F 3.7P
 120,000 SCC
 Over half the herd EX



"We've loved Udder Comfort™ for over 15 years, for any cow with edema, thickness or mastitis. We love the difference in our fresh cows, using it 2x/day for 3 to 7 days after calving to prevent damage to the udder. Knockoffs just don't do it. With Udder Comfort, we definitely know we are losing edema much faster. We see it working," say Chuck and Sue Luchsinger.

Chuck recalls getting SSF Andreas Linda ready for the New York State Fair in 2022. "We used Udder Comfort on her seam. It came out tremendous. It really brings out the natural quality and potential."

Chuck, Sue and son Charlie milk 60 elite high component Jerseys in rotational grazing at Silver Spring Farm, Syracuse, N.Y. Over half are scored EX. SSF has earned over 60 Premier Breeder and nearly 50 Premier Exhibitor banners in 100 years showing at New York State Fair.

They've bred elite cows like SSF Andreas Camilla EX93, senior, grand and reserve supreme of the 2022 RAWF under the ownership of Ernie Kueffner and Terri Packard, Boonsboro, Md. At 30 days fresh, she was recently senior and grand champion of the Northeast National.

UDDER COMFORT™
 Quality Udders Make Quality Milk

Her Comfort is Our Passion!

Softer udders ⇒ Faster milking
 Better quality ⇒ MORE MILK

1.888.773.7153
 uddercomfort.com

Helping reach their potential since 1998!



For external application to the udder only, after milking, as an essential component of udder management. Wash and dry teats thoroughly before milking.



USPS 509450 ISSN 0745-7553

Published by Farmshine LLC
 in Lancaster County, Pennsylvania.

1-YR. SUBSCRIPTION - \$20.00
 INTERNATIONAL SUBSCRIPTION - \$40.00
 Published every Friday except the week of Christmas

Dieter Krieg, Editor & Publisher
 Melissa Johnson, Advertising Representative
 Ashley Denlinger, Advertising Representative
 Sue McCloskey, Secretary
 Douglas Denlinger, Production Manager

Send subscriptions, news & advertising to:
 FARM SHINE
 342 E. Main St., Suite 201, Leola, Pa. 17540
 Phone 717-656-8050 | Fax 717-656-8188
 news@farmshine.net | ads@farmshine.net

Periodicals postage paid at Lancaster, PA
 and at additional mailing offices.

POSTMASTER: Send Address Corrections To:
 FARM SHINE
 342 E. Main St., Suite 201
 Leola, Pa. 17540

Copyright © 2023. Printed in USA. All rights reserved. No part of this publication may be reproduced in any form without prior written permission by the publisher. Information gathered herein is from resources considered reliable. Accuracy, however, cannot be guaranteed. All printed material is intended for your information and reading enjoyment and is not meant to disrespect or harm any group or individuals. Ads appearing in this paper are not to be considered as an endorsement by Farmshine for products or services offered.

Farmshine's staff reserves the right to refuse any and all material, including articles and advertisements that they determine do not fit the objectives of Farmshine.

Whole milk sales surge as Senate bill for schools remains blocked

By SHERRY BUNTING
Special for Farmshine

EAST EARL, Pa. -- Year-to-date Whole Milk sales for the first two months of 2024 are up a whopping 5% year-over-year (YOY) at 2.57 million pounds. Even when adjusted for Leap Year, the average daily increase is a substantial 3% surge, compared with the past several years of steady 1% increases YOY.

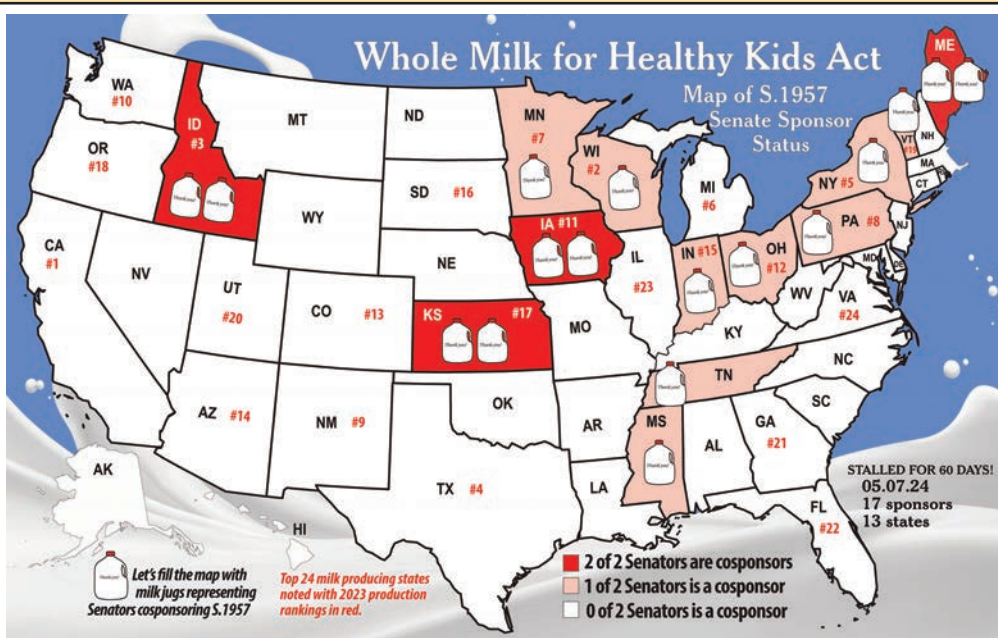
Flavored whole milk sales, year-to-date (YTD) are up a whopping 18.6% YOY. Adjusted for Leap Year, the increase is a substantial 14%.

As the number one volume category representing more than one-third of the fluid milk category since 2020, the recent surge in whole milk sales has been enough to reverse the decline in total packaged fluid milk sales in four of the past five months.

USDA tallied 2023's total packaged fluid milk sales down by a smaller margin of 1.5% for the year compared with previous years of decline; however, October and November sales were up 1% and 0.3% YOY for the first time since the months of the Covid shutdown when families ate at home. December's total packaged fluid milk sales trailed year-earlier, but January and February 2024 have come back strong.

USDA estimates total fluid milk sales were up 2.4% and 2.5% YOY for January and February, respectively. When adjusted for Leap Year, the February increase is a respectable 0.8%. Similarly, when we adjust the YTD total of 7.325 million pounds in total fluid milk sales to reflect the extra consumption day in February, this is also 0.8% higher on an average daily basis vs. year ago.

This is good news! Let's keep this upward trend MOOVING in fluid milk sales, led by surging whole milk sales -- thanks to volunteers spreading the good word.



Now, if we could just get the United States Senate off the sidelines and into cosponsoring S. 1957 Whole Milk for Healthy Kids, we could really gain some ground -- and America's kids would be free to choose milk they love at school where they receive two meals a day, five days a week, three-quarters of the year.

Thanks to the U.S. House of Representatives and the leadership of Congressman G.T. Thompson of Pennsylvania, the Whole Milk for Healthy Kids Act (H.R. 1147) passed the House on December 13, 2023 by an overwhelming bipartisan majority 330 to 99. If the U.S. Senate doesn't have the opportunity to vote it through by December 31, 2024, we must start all over again in the next legislative session 2025-26!

Check out the map on this page to see how S. 1957 remains stalled for the past 60 days at just 17 sponsors from 13 states.

Where do your state's U.S. Senators stand?

Ask them! And think about their answers when going to the polls this fall. Elections have consequences.

Also consider asking your state senators and representatives to follow Tennessee's lead and get a whole milk bill passed in your state and signed by your governor.

Pennsylvania and New York State tried to be first, but leaders are afraid of USDA's monetary penalties. Maybe the No. 8 and No. 5 milk producing states can be second and third in state whole milk bill passage.

Just think what would happen if more states passed bills that allowed choice and sought creative language to let their schools choose to let children choose. Tennessee will make it available in bulk dispensers separate from the school lunch line. Pennsylvania sought to do it as a wholly in-state proposition.

Meanwhile, DMI sent a press release on April 29 touting their "checkoff-led pilot in

Cincinnati schools that offered lactose-free chocolate milk increased milk consumption..." (Of course, this lactose-free pilot was also fat-free per the USDA rules for milk at school built on the Dietary Guidelines that the dairy checkoff agreed to "advance" when the memorandum of understanding was signed between the USDA, National Dairy Council, GENYOUth and the NFL in 2010).

Specifically, the pilot schools experienced a 16% increase in milk consumption and a 7% higher meal participation, according to DMI.

(Remember, this reporter warned several years ago that checkoff and dairy industry leaders would wait until lactose-free shelf-stable milk was firmly entrenched in schools before pushing whole milk choice through.

Senate Ag Chairwoman Debbie Stabenow is the main blockade this time around. She hails from the No. 6 milk producing state of Michigan, where the foundation fairlife plant is located, collecting milk from large producers in Michigan, Indiana and Ohio. Wonder what consumption looks like when whole milk is offered as a choice.

That's right! A Grassroots PA Dairy Advisory Committee / 97 Milk trial in western Pennsylvania saw consumption grow 52% and waste decline 95%.)

So, drink up Senators! Talk to your constituent Moms this Mother's Day. Sales data and surveys both show what Moms think, and most don't even realize the federal ban, the bait-and-switch their kids face at school where milk and dairy are concerned. Then pour a tall cold glass of delicious, nutritious whole milk. It may just strengthen those political spines!

Durable Ag Curtains

Complete Curtain Systems
with all the components you'll need

- High Quality 16 oz. Vinyl Curtain Material
- Galvanized Bird Wire
- Keder Tubing & Drive Motors

Available with: Manual Gear Drives or Fully Automated to Control Your Curtains 24/7

Ask About Automation!

CALL NOW
to Get In Our Schedule

SHADY LANE Curtains LLC
Bird-in-Hand, PA
(717) 690-2003

"The Nation's Industry Leader in Ag Curtains"

What's UP with Class III?

Settlement checks for April milk to be hard hit by record-low 83-cent protein, while cheese market's 5-week rally is heating up

For 18 months, Class III has been the underdog in milk pricing, especially rough for dairy producers in the Upper Midwest struggling under the brunt of FMMO 30 blend prices built mainly on Class III.

In fact, the April protein price hit a record low, announced May 1 at 83 cents/lb, which is 14 cents below the 97 cents/lb announced price for solids nonfat. This has never happened before, according to our search of class and component pricing archives. The butterfat price for April is quadruple the protein price at \$3.33.

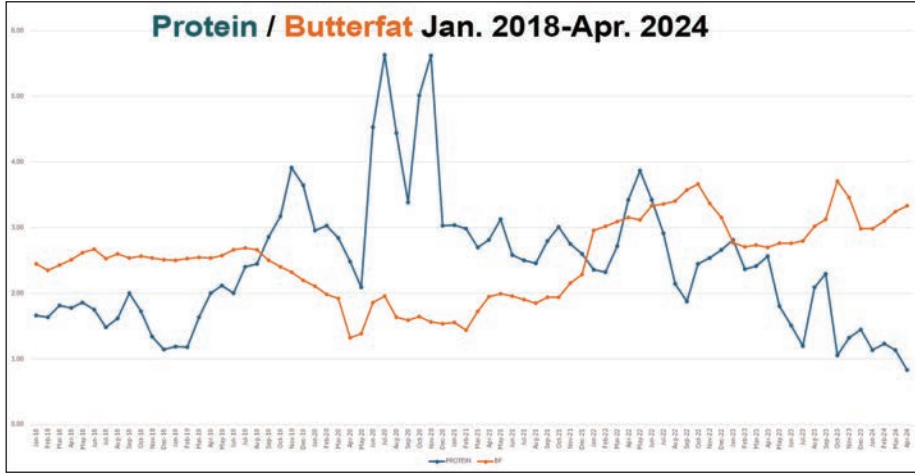
Meanwhile, the Class III milk futures haven't offered much of a breakeven price to spend money protecting with hedges or DRP...

Until now.

Class III milk futures continued higher again this week, skyrocketing limit-up for nearby contracts Wed., May 8, putting the exclamation point on five straight week of gains that have added \$3 per hundredweight to the remaining 2024 contract months -- going from the \$16s and low \$17s to the \$19s and \$20s. This is the first time the Class III milk futures board has seen \$20s in nearly 18 months.

Class IV futures also made solid 20- to 30-cent gains this week charting over \$20 and \$21s across the board.

If the current Class III rally goes too far, too fast, we could see negative PPDs in some FMMOs in June for May's milk because the May Class I advance base price mover was already announced in mid-April, based in part on the much lower advance pricing factors in the Class III market during the first two weeks of April. The 'average of' method disadvantaged the May Class I mover by \$1.73/cwt, which will undoubtedly be a factor for May milk pooling if Class I, at a base price of \$18.46, ends up the lowest class for May, except where location differentials are high enough to boost it.



Class III milk futures board sees \$20s, Spot cheese hits highest price in a year

On Wed., May 8 the Class III milk futures for the next 12 months (May24 through Apr25) averaged \$19.04, up 54 cents from the previous Wednesday. Class IV milk futures averaged \$20.86, up 22 cents from a week ago.

The milk futures rally is driven by the upward momentum in CME daily spot cheese markets, reaching levels this week that are 50 to 55 cents per pound higher than six weeks ago.

The 40-lb block Cheddar price roared 11 1/2 cents higher to \$1.95/lb in a single trading session Wed., May 8, gaining 20 cents/lb on the week, and hitting the highest level since last fall, with a single load trading. For 500-lb barrel cheese, at \$1.90/lb, the gain was a dime on the week, and the highest price in over a year, with zero loads trading.

All other dairy commodity prices were higher too, with no trades changing hands. Dry whey gained a penny at 38 1/2 cents/lb. Butter up 2 cents at \$3.02/lb, and nonfat dry milk (NFDM) up a penny at \$1.13/lb.

Dairy farmers will not see these gains in their milk checks until June, if the trend is sustained. Milk checks next week to settle April marketings may be among the lowest in months, especially for farmers in the cheese-heavy FMMOs due to the record-low 83-cent protein price and the April

Class III price announced at a dismal \$15.50.

Analysts tout the record volume of cheese exports in March, which were no-doubt prompted by the cut-rate January through April pricing.

But that doesn't pay bills on the dairy farm.

We have to go back to 2019 to find a 4-month Jan-April average Class III milk price that was lower than the first four months of 2024. We have to go back to the Covid shutdown in 2020 to find an April Class III milk price that was lower than April 2024.

But even then, protein held up at \$2.48/lb, not the 83 cents per pound that USDA announced for April settlement next week.

The difference this time is that fat is so much higher (quadruple the protein price at \$3.33/lb for April). This essentially pulls a credit out of protein as an adjustment in fat values for cheese vs. butter. This is a seldom-discussed and little understood function of FMMO multiple component pricing, and another downfall of the many months of wide Class IV over III divergence.

Better views ahead...

Higher Class I sales and record-high made-to-order fresh mozzarella production compete with stored product output for reduced milk supply

While the rear-view mirror shows the rough road traveled, the view ahead is improving for Class III milk and the beleaguered record-low protein price. Milk production is down. Fluid milk sales are UP. Processors are making record amounts of fresh (made to order) mozzarella cheese, causing Cheddar production to slow. Meanwhile, Class IV product supplies are tight.

The most recent USDA Dairy Products Report showed cheddar cheese production down 3.3% year-over-year (YOY) in March, with all American style cheeses down 2.9%.

A positive this year that was missing last spring and summer is the draw for milk to make Italian cheeses. Mozzarella production set records in March, up 6.8% YOY, but those products are not price-surveyed, nor are they included in the FMMO Class III pricing formula.

In addition to cheddar cheese, the Class III price is also made up of dry whey sales via the 'other solids' component. Whey production for both human and animal use is accelerating as inventories of value-added whey protein concentrate (WPC) and whey protein isolates (WPI) were more than 40% below year ago at the end of March, despite March WPC production being up 1% for human use and up 40% for animal use; WPI up 73% YOY.

Dry whey is the commodity used in the FMMO Class III pricing formula with production up 2.4% for human use and 19.2% for animal use in March.

On the Class IV side, butter production was up 1.5% YOY in March with inventories up 2%. As for powders: Whole milk powder production was down 14.6% with inventory 36.3% lower YOY; Skim milk powder, typically made for export orders, was down 41.7%; and Nonfat dry milk output was down 7.9% YOY in March with inventories off 20.3%.

Milk protein concentrate (MPC) production was the contrarian -- up a whopping 38.5% YOY in March. MPCs are often used to bump cheese yields higher per hundredweight of raw milk.

These factors beg questions: Why were Class III milk prices for the first four months of 2024 at 5-year lows and protein at a record low 83 cents per pound for April? Was it the plan to crush Q-1 2024 spot cheese and Class III milk prices to generate record cheese export volumes in March? Are cheesemakers using some of that big increase in MPC production to make more cheese from each cwt of raw milk? Are bioengineered fermentation yeast proteins that are marketed in trade publications as 'dairy protein analogs' diluting the supply and demand equation fractionally?

Global picture improving

The global picture is also improving. New Zealand tallied a lower output for the season, and recent reports show stable to lower milk output in EU countries.

In the Global Dairy Trade (GDT) biweekly internet auction Tues., May 7, the all products index was up 1.8% over the previous auction on April 16. This includes a whopping 8% increase in the GDT price index for bulk Cheddar sales contracted out through November, plus a 2.3% increase in bulk Mozzarella sales for July.

In fact, GDT Cheddar contracts for June were up 6.5% in Tuesday's auction; July up 3.9%; August and September had no sales. October and November contracts were up 11.2 and 12.5%, respectively, compared with three weeks ago.

Testing _____ from page 4

also will include new and emerging animal-agriculture industry issues. The messages are updated weekly or every other week.

Three lines currently are active. Line one offers a dairy message, line two shares a poultry message and line three advertises upcoming events. New messages are posted on Mondays. If individuals have any topic requests for the dairy line, they can call Emily Fread at 570-556-4748. For poultry topic requests, call Torey Fischer at 717-363-9059.

"WHAT'S NEXT?"

While none of us knows for sure exactly what is in the future for the dairy industry, change is coming.

- (1) Will antibiotics be banned by consumer demand?
- (2) Will milk over 100k SCC be penalized?

Be ready for whatever comes next: just call 920-650-1631.

To get started: Call today! 920.650.1631
www.alphageneticsinc.com



Also BE A DAIRY HERO. CALL 202-224-3121 and tell your Senators to co-sponsor and vote YES to S1957 "WHOLE MILK FOR HEALTHY KIDS ACT"



Also call Senate Ag Chair Debbie Stabenow at 202-224-4822 and ask her to please co-sponsor & pass S1957 so children in public schools can again enjoy healthier whole milk. USA is watching you.



SUPPORT 97milk.com. They support you!
GOOD NEWS 24-7-365. 1-605-477-2279





MAXIMIZE YOUR MILK QUALITY

WITH OUR EXPERT TEAM!



Enhance your overall milk quality with the support of our specialized staff - our combined team effort ensures unmatched equipment sanitation and optimal udder health, positioning your dairy for success.

What sets us apart?

Our buying power allows us to offer a top-quality product line at the most competitive pricing in the market!

We pride ourselves on the highest standards of cleaning, sanitizing and animal hygiene through personalized customer service - plus no-nonsense support regarding innovative technologies and specialty products.

Reach out today and see how our team can help achieve your ultimate milk quality goals!

Our Belleville location is proud to offer an affordable, comprehensive cleaning & sanitation program, featuring top-tier products like:

- ✓ Principal (chlorinated alkaline detergent)
- ✓ Envirocid Plus (highly concentrated red acid 1:10 use rate)
- ✓ Mandate Plus (acid sanitizer) **ECOLAB®**



[/fisherthompsoninc](https://www.facebook.com/fisherthompsoninc)

www.FisherThompson.com

YOUR PARTNER IN DAIRY SOLUTIONS!

Auburn, NY.....	315-252-9270	Rocky Mount, VA.....	540-489-5800
Batavia, NY.....	315-252-9270	Belleville, PA.....	717-935-7422
Clymer, NY.....	716-450-9967	Chambersburg, PA.....	717-352-7606
Conewango Valley, NY.....	716-358-9152	Roaring Spring, PA.....	814-224-0070
Mechanicville, NY.....	518-652-2383	Somerset, PA.....	814-444-8502
Harrisonburg, VA.....	540-867-3251	Troy, PA.....	570-297-2012

MAIN OFFICE

LEOLA, PA
717-656-3307

Advertiser's Index

Agri-King.....24	Leabrook Ag.....13
Agri-Trac.....17	Lira Gold.....17
Alpha Genetics (Immu-Pro)....4	Martin's Roofing.....12
Beiler Industries.....22	Morrissey Insurance.....16
Beitzel Spraying.....6	Natural by Nature.....7
Borderview Genetics.....19	Nelson & Sons Concrete Grv.12
Brubaker's Dairy Sales.....20	New Holland Sales Stables...19
Brubaker, Rufus Refrigeration .6	Nicholas Meat.....10
Building Directory.....12	Patz.....10
DHIA Pages.....14-17	Penns Valley Horse Auction...19
Ephrata Agway.....8	Power Systems Electric.....13
Esch Hay Equipment.....7	Precast Systems.....21
Farmer Boy Ag.....15	Priority IAC.....23
Fisher & Thompson.....5,11	Rissler Conveyors.....19
Fisher's Quality Dairy Sales .19	Rissler, I.H. Manufacturing.....7
Fraleay Auction Company.13,22	Select Sires Member Coop...14
Gehm, L.R.....8	Shady Lane Curtains.....3
Horst Grain Roasting.....23	Sollenberger Silos.....21
I&J Manufacturing.....8	Sturdy Built Manufacturing.....7
JBS.....6	Tradition Auction Services...21
JBZ/Graham Dairy/Milk Barn .9	Triple M Farms.....21
JRS Ag Assemblies.....2	Udder Comfort.....2
Keystone Concrete Products.16	Useful Farm Products.....13
KIKO Auctioneers.....20	Willow Road Silo Doors.....21
Kish Valley Dairy Sales.....22	Zimmermans Glass Strg..22,23

Auction Guide

MAY 11, 11 a.m. 2024 Midwest Revue Royale, Wooster, Ohio. Sale managed by Modern Associates.

MAY 15, 10:30 a.m. Dairy Cow & Heifer Sale, New Holland Sales Stables, New Holland, Pa. Sale managed by New Holland Sales Stables.

MAY 16, 7:15 p.m. Alson & Minerva Martin Herd Dispersal, Brubaker's Quality Dairy Sales, Shippensburg, Pa. Sale managed by Brubaker's Quality Dairy Sales.

MAY 17, 12:30 p.m. Real Estate Auction, Oxford, Ohio. Sale managed by KIKO Auctioneers.

MAY 17, 1 p.m. Monthly Consignment Dairy Sale, Kish Valley Dairy Sales, Belleville, Pa. Sale managed by Kish Valley Dairy Sales.

MAY 17, 4 p.m. Special Driving & Draft Horse Sale, New Holland Sales Stables, New Holland, Pa. Sale managed by New Holland Sales Stables.

MAY 18, 11 a.m. Lakevue Farm Complete Reg. Holstein Herd Dispersal, Huntingdon, Pa. Sale managed by Fraley Auction Company.

MAY 23, 7 p.m. Special Dairy Sale, Fisher's Quality Dairy Sales, Ronks, Pa. Sale managed by Fisher's Quality Dairy Sales.

MAY 24, 11 a.m. CDT. Butlerville Farm Memorial Day Extravaganza, Chebanse, IL. Sale managed by Fraley Auction Company.

MAY 25, 11 a.m. Special Riding Horse Sale, Penns Valley Horse Auction, Centre Hall, Pa. Sale managed by Penns Valley Horse Auction.

MAY 30, Tramilda Milking Herd Dispersal, Montezuma, Ga. Sale managed by Tradition Auction Services.

MAY 31, 7:30 a.m. Horse Consignment Sale, Penns Valley Livestock, Centre Hall, Pa. Sale managed by Penns Valley Livestock.

JUNE 8, 11 a.m. Built To Last at Brigeen Farms, Turner, Me. Sale managed by Borderview Genetics.

JUNE 20, Special 12 Year Anniversary Dairy Cow & Heifer Sale Brubaker's Quality Dairy Sales, Shippensburg, Pa. Sale managed by Brubaker's Quality Dairy Sales.

JULY 6, PHA Summer Sensation Sale & Picnic, Somerset, Pa. Sale managed by Pa. Holstein Association.

Dairyman's Datebook

MAY 11, 6 p.m. Centre County Dairy Princess Pageant at Wasson Farm, 2545 Shingletown Road, State College, Pa.

MAY 11, noon, Susquehanna County Dairy Princess Pageant, Oaklawn Farm Event Venue, 19604 State Route 29, Montrose Pa.

MAY 21-22, Holstein USA Judges Conference, Oakfield Corners Dairy, Oakfield, N.Y.

JUNE 13, 6 p.m. Annual Toast to Dairy Celebration, Melhorn Manor, 977 West Main St., Mount Joy, Pa.

JUNE 18-21 National Ayrshire Convention, Comfort Inn & Suites, 840 Sean Drive, Fremont, Ohio.

JUNE 20, Special 12 Year Anniversary Dairy Cow & Heifer Sale Brubaker's Quality Dairy Sales, Shippensburg, Pa. Sale managed by Brubaker's Quality Dairy Sales.

JULY 6, PHA Summer Sensation Sale & Picnic, Somerset, Pa. Sale managed by Pa. Holstein Association.

nual meetings, Sheraton Springfield Monarch Place, Springfield, Mass.

JUNE 22, 8 a.m. to noon, Breakfast on the Farm at Iowa's Dairy Center, 1527 Highway 150 South, Calmar.

JUNE 25-29, National Milking Shorthorn Convention, Fireside Inn & Suites, 25 Airport Road, West Lebanon, N.H.

JULY 3-6, National Brown Swiss Convention, Hyatt Regency Hotel, 333 Main Street, Green Bay, Wis.

JULY 6, Pennsylvania Holstein Picnic, McWilliams Farm

JULY 12, 10 a.m. Virginia Dairy Expo, Shenandoah Valley Produce Auction, 2839 Lumber Mill Road, Dayton.

Pre-movement testing for bird/cow flu clarified

By SHERRY BUNTING
Special for Farmshine

HARRISBURG, Pa. — Bird flu in bovines is taking a positive direction in terms of no new detections. Pennsylvania State Veterinarian Alex Hamberg said the next one to two weeks will tell us if it is more widespread due to the federal surveillance now underway through the pre-movement testing of all lactating dairy cows crossing borders from any state to any other state.

No new cases of highly pathogenic avian influenza (HPAI) have been confirmed by USDA Animal and Plant Health Inspection Services (APHIS) in the past eight days, and only one new case in the past 20 days. The number of detections remains at 36 herds in 8 states.

USDA clarified its federal order for mandatory pre-movement testing of lactating dairy cows this week. The only exception is for interstate shipment of cows directly from the farm to a federally-inspected slaughter plant. Any lactating cows shipped across state lines to a slaughter-only auction at a sale barn must have official identification, a certified veterinary inspection (CVI) and an HPAI-negative milk sample test from a qualified lab within 7 days of transport.

Lactating dairy cows moving to sale barns within the same state, with just owner/shipper statement and back tags, may go from the sale barn to an out of state federally-inspected slaughter plant if they proceed there directly without any stops to unload any commingled animals from that trailer to a non-slaughter premises.

During the weekly industry call hosted by the Center for Dairy Excellence, Pennsylvania State Veterinarian Alex Hamberg noted that Pennsylvania raised its testing age for non-lactating dairy cattle from 12 months to 18 months. They require testing only when coming into Pennsylvania from states that have had an HPAI detection. UNIVERSITY PARK, Pa. — For those with limited or no internet access, Penn State Extension poultry and dairy educators are offering an alternative educational method — timely production-related information via telephone.

By calling 888-655-2407, producers and hobbyists can listen to five-minute messages with tips on dairy or poultry production, the latest industry issues, and upcoming extension events.

Extension educators cover various topics, such as food safety, feed management, health and disease. The phone line turn to page 4

Leaving for Maine on June 6th

Bus trip planned to five top Holstein herds

MORGANTOWN, Pa. — A bus trip to Maine is in the works for Holstein enthusiasts wishing to attend the "Built to Last Sale" at Brigeen Farms in Turner, Maine, on Saturday, June 8th. Along the way, the tour group will visit four prestigious, high-BAA herds, namely Conant Acres, Juniper, Pineland and Silver Shade.

Ben Kauffman of Morgantown is organizing the trip at a cost of \$135 per person for the bus only. Expenses for lodging and meals is not included.

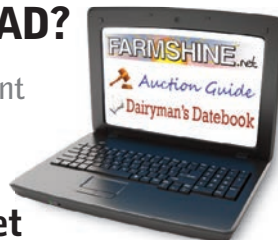
The bus will leave from Morgantown on Thursday night, June 6th, drive through the night and make a stop for breakfast before visiting a few of Maine's top Registered Holstein herds. The following day, Saturday, will be spent at the sale, which is scheduled to start at 11 o'clock.

Pick-up options for the trip include Morgantown, Cabela's near Hamburg and the Wilkes-Barre / Scranton region. More precise information will be provided when you make your reservation by calling Ben at 610-273-3472. Or you can email him at bkpets@upwardprint.com

The bus is scheduled to be homeward-bound around 2 p.m. on Saturday and be back in Morgantown before midnight.

LOOKING AHEAD?

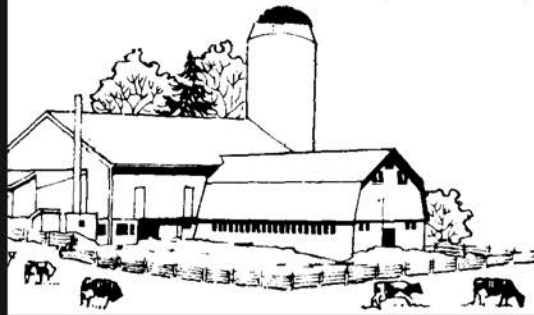
Find auction and event listings to fill your calendar online:



www.farmshine.net

WHITE WASHING with ADVANTAGE FARM WHITE

- Dries White • No Wet Floor
- Is Compatible With Disinfectant And Fly Sprays
- Does Not Rub Off Easily
- Washes Off Windows And Pipelines Easily



BARN CLEANING SERVICE AVAILABLE WITH COMPRESSED AIR

To have your barn cleaned with air it will clean off dust, cobwebs and lots of the old lime. This will keep your barn looking cleaner and whiter longer.

CALL US ABOUT ON THE FARM FLY CONTROL

Serving Southeastern Pa. And More

Beitzel Spraying

Witmer, PA 17585 • 7:00 A.M. to 5:00 P.M.
717-392-7227 or Toll Free 1-800-727-7228

CERTIFIED COMMERCIAL APPLICATORS
LICENSED 45 YEARS EXPERIENCE INSURED

Radio Dispatched Trucks
Barn Spraying Is Our Business
Not A Sideline
Spraying Since 1961

(JBS)

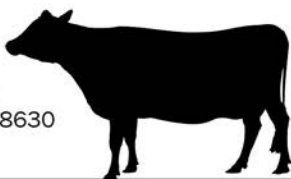
Souderton, PA

SELL YOUR CATTLE!

PURCHASING
CULL COWS

Same-Day Payment
NO Fees • NO Commission

For more information:
Direct: (970) 506-8215
Duff George: (717) 594-8630



Livestock Buying Stations are OPEN:

7195 Molly Pitcher Hwy
Greencastle, PA 17225
Monday & Wednesday
9 a.m. - 2:30 p.m.

503 School Rd
Denver, PA 17517
Tuesday & Thursday
9 a.m. - 2:30 p.m.

Contact Doug Musser: (267) 371-9824

(JBS) Learn more about our brands at
jbsfoodsgroup.com

249 Allentown Rd | Souderton, Pennsylvania 18964 USA

Rufus
Brubaker
Refrigeration LLC

Toll Free 1-866-665-3525

New & Used
Quality Milk Tanks
400 Gallon 1000 Gallon
700 Gallon 1500 Gallon
800 Gallon

Walk-In Coolers and
Freezers, Panels and
Doors Available.

BARBWIRE

Words of wisdom for grandmothers-to-be from a great grandmother

By **BARB LUMLEY**
Ohio Farm Wife

A friend of mine recently became a grandmother for the first time. There was a picture of her and her beautiful new granddaughter on her Facebook page. Her joy was obvious! As a grandmother and a great-grandmother, I would like to pass on to her and to any other grandmothers or great-grandmothers to-be, a few “words of wisdom” that life has taught me.

Grandmother, your life has changed and it will never be the same again! Grandchildren will bring joys that you have never known before. However, be aware that just as with your children, there will also be scares, worries, accidents and concerns. That is life! The joys will outnumber those.

Many of you — including some of the great-grandmothers — have to work due to the current economic situation in our country. My friend is a very busy lady, traveling all over the country in her job. I urge her and every one of you to set aside some special time to spend with the children.

Those years from birth until they start school are very special times. They will be growing, changing, and experiencing things that only happen once in their lifetime. You will want to be there if you can.

During those years they will touch your heart, bring you laughter, and their ideas and imagination are developing and wonderful! One of my favorite times was just sitting at the kitchen table and talking with Emily and Daxton. I learned a lot — some things I wasn't supposed to!

As they start school and become so involved in activities you won't get to spend as much time with them. Before you know it, they will be graduating from high school and heading out into the world. The older they get, the less time you will get to spend with them. That's life!

I am so grateful that I have been allowed to have the extra years in retirement to spend with my great-grandchildren. I consider it a special gift.

If you listen to the media and the news you know that our country is in turmoil, with protests and sad things happening at many of the places of education and the “so called” best colleges in our country.

The news people talk about it and talk about it and show the pictures where it is happening over and over and over. The one thing they do not tell us or show us is the thousands of students in our country who are going to school every day, attending classes, following the rules and causing no problems! Why doesn't the media show us those students and the colleges where there are no protesters? Many of the people

protesting aren't even students! They are being paid to cause trouble! Why is bad news the only news we ever seem to see or hear?

I am a strong supporter of the youth. There are outstanding youths all over this country! They can be found in every state, every county, every big city, every small town, in every rural area, and on every farm. They are everywhere and doing outstanding things, yet they are seldom featured on the news and we are seldom told about them.

For those of us who have so many concerns about the problems in our country, hearing about them (the good kids) would certainly help us have more faith in the future of our country! Thank goodness that some of us still have local newspapers that give us stories about them and their accomplishments. It is so sad that so many local communities no longer have those local newspapers.

As a retired breeder of Registered Holsteins and a retired dairy farmer, I am a very strong supporter of our farm kids. They grow up working hard on the farm with their families and learning responsibility. So many of them belong to 4-H clubs from age 8 to 21. Many

of them belong to the Future Farmers of America in high school. They learn many different things from both organizations. There are projects of all kinds for them to participate in and they will be exhibiting them at county and state fairs all over these United States. Some of them will be selling their projects. There are youth involved in numerous other organizations. They can all use your support in many ways.

Many of you have family members who live far from you, so you don't get to see grandchildren or great grandchildren very often. Find the ways to communicate with them and keep in touch. Set a certain time and day that you call and talk to them. Learn to text with them. Send them cards, notes and letters. They may save them and treasure them in later years. In the meantime, find ways to help and support youth in your local area who do not have grandparents close or have lost their grandparents.

Every child needs love and support! Our youths are the future of our country!

“There is no other love that is as special as the love of a Grandma. So warm and fuzzy, so calm and sweet, so cheerful and joyful.”

— Hopal Green



RISSLER VERTICAL TMR MIXERS

Twin Vertical Auger TMR Feedcart

Features include:

- 5 sizes from 45 to 110 cu.ft.
- Stainless Steel mixing chamber
- Stainless Steel auger flight
- 14" Carbide-tipped hay knives

Free brochure! 1-800-436-5623

RISSLER
TMR MIXERS SINCE 1981

Natural By Nature is looking to sign up Organic Dairy Producers.

Natural
BY NATURE

- Family-owned operation that has been in business for 30 years.
- Have our own processing plant where we bottle our organic dairy products.
- Offer great quality premiums and an optional 100% grass-fed premium.
- No hauling, labs, or marketing fees, no equity deductions, or quotas.
- We are looking to expand our producer group in Lancaster, Berks, Perry, and Dauphin County.

For additional information, please reach out to Amy Simms at 484-643-6714.

HAY TEDDERS

Do you have heavy crops such as Cereal Rye, Triticale, 1st cutting Alfalfa?

Do you need a Tedder that can handle these crops?

Contact Esch Hay Equipment for a Tedder that is built to handle these crops!

New tedders have a:

- One year warranty
- Hyd. fold and tilt
- Lifetime warranty on tine arms
- New tine design with 4x less breakage
- Four sizes to fit your needs
- 2-star 9 ft. wide
- 4-star 18 ft. and 22 ft. wide
- 6-star 32 ft. wide

Call us for a dealer near you or stop by our location at:

Esch Hay Equipment LLC
3230 E. Gordon Rd., Gordonville, PA 17529
717-768-0600

Sturdy Built Manufacturing, LLC

Agricultural Curtain Systems

- Double Roll-Up
- Center Roll-Up
- Drop & Roll
- Single Roll-Up Parlor Curtains
- Curtains for Calf Nurseries

In-House Fabrication

Rapid Production!
(Hardware in Stock)

Convenient to Install
or Ask about a Local Installer

Benefit from Fresh Air Year-Round!

Call 866-543-5116
sales@sturdybuiltmfg.net
260 S. Muddy Creek Rd. Denver, PA 17517

Request a FREE Ventilation Equipment Guide!



Pictured are the top cows of the youth show. From left to right are the honorable mention champion Walk-Le Landon Priscilla, owned and led by Connor Walker; reserve grand champion MS Opportunity Amanda-Red-ET owned and led by Madison Soden; and the grand champion, Sweet-Peas Solomn Adrift-ET owned and led by Tyler Soden.



The open show's top cows were McWilliams Warrior Raine-ET, the grand champion led by Sam McWilliams; Sweet-Peas Movin Camouflage, the reserve grand champion led by Heather Soden; and McWilliams Damion Grace, the honorable mention grand champion led by Renee Pierick.

Home-bred entries dominated Pennsylvania Holstein show

CENTRE HALL, Pa. — Home-bred animals were the hands-down class-winners and champions at the Pennsylvania Holstein Association's Spring show, held here at the Grange Fairgrounds on April 22nd. They are indicated, below, by class in red ink.

Noteworthy too is that it wasn't just class winners and champions that were home-bred. Of the total 219 animals paraded around the ring for Judge Justin Doeberiner of Ohio, 130 were home-bred. Class placings follow with youth entries indicated by parentheses (1).

Winter calves, born Dec. 1, 2023 - Feb. 29, 2024; 23 entries: 1. Sam McWilliams with **McWilliams Chief Just Fine**; 2. Cory Thompson, 3. (1) Sara and Anna Kennedy, 4. (2) Allyson Welk, 5. Eric Niswander; (3) Cooper Wilk, (4) Brianna Walker, (5) Aubree Route and Philip McCormick.

Fall calves, born Sept. 1, 2023 - November 30, 2023; 32 entries: 1. (1) Levi Cooley with **Cool-Kids War Rae Rae**;

2. Denise Pease, 3. (2) Tyler Soden, 4. (3) Luke Tanis, 5. John Skinner and Roy Thompson; (4) Philip McCormick, (5) Elsie Sturgeon.

Summer yearlings, born June 1, 2023 - August 31, 2023; 23 entries: 1. (1) Madison Soden with **Sweet-Peas D Lambda Audrey**; 2. Lucia Syndicate, 3. (2) Jackson Cloninger, 4. (3) Emma Pringle, 5. Lucia Syndicate, (4) Hayden Weaver, (5) Bethany Eberlin.

Spring yearlings, born March 1, 2023 - May 31, 2023; 31 entries: 1. Denise Pease with **Sweet-Peas Master Adore-ET**; 2. Horst, Kitchen & Wolf; 3. Derek Whitehouse, 4. Genetics Link, 5. (1) Kenley Sellers, (5) Danica Rhoads; (2) Ellie Widerman, (3) Ellie Widerman, (4) Bethany Eberlin, (5) Danica Rhoads.

Winter yearlings, born December 1, 2022 - February 28, 2023; 18 entries: 1. Ricecrest with **Ricecrest Catch Me**; 2. Genetics Link, 3. Denise Pease, 4. Chad and Sara Horst, 5. (1) Avery Kitzmiller; (2) Cody Walker, (3) Grace Rinaldi, (4) Charles Stoltzfus, (5) Riley Kocher.

Fall yearlings, born September 1, 2022 - Nov. 30, 2022, ..., entries: 1. (1) Philip McCormick and Bethany Eberlin with **Cherry-Lor Robin P-Red**; 2. Denise Pease, 3. (2) Landen Copenhaver, 4. Justin and Ashley Kaufman and Cory Thompson; 5. (3) Kyle Welk; (4) Travis Fogle-

man, (5) Garrett Peters.

Junior champion, open and youth show: **Cherry-Lor Robin P-Red**, sired by Cycles Jails Journey Red, exhibited by Philip McCormick and Bethany Eberlin.

Reserve junior champion of the youth show: **Cool-Kids War Rae Rae-Red**, sired by Mr. Blondin Warrior-Red, exhibited by Levi Cooley.

Reserve junior champion of the open show: **Sweet Peas Master Adore-ET**, sired by Golden Oaks Master-ET, exhibited by Denise Pease.

Junior best three: 1. **Denise Pease**, 2. **Cherry-Lor**, 3. **Lucia Syndicate**

Summer jr. 2-year olds, born June 1, 2022 - August 31, 2022; three entries: 1. Denise Pease with **Sweet-Peas Moo Arizona**, 2. Walk-Le Farm, Inc., 3. Michael Yoder.

Junior 2-year olds, born March 1 - May 31, 2022; four entries: 1. Campbell-Run Farms with **Campbell-Run Dmv Electra**; 2. Jacob Cooley, 3. Katie Kutscher and Andrea Bednarski.

Senior 2-year olds, born Sept. 1, 2021 - Feb. 28, 2022; 18 entries: 1. Genetics Link with **Elmvue D Lambda Briskly-ET**, 2. Genetics Link, 3. Cessna Brothers, 4. Brandon Grumbine, 5. Madison Soden. Juniors: (1) Aubree Kitzmiller with **AAG-Dreams Helix Firefly**; (2) Olivia Jonas, (3) Luke Tanis, (4) Connor Walker, (5) Kurtis Houser.

Junior 3-year olds, born March 1 - Aug. 31, 2021; 8 entries: 1. Tyler Soden with **Sweet-Peas Moovin Camouflage**; 2. Bryanna Mills, 3. Jacalyn Bortner, 4. (1) Shaylin Reichard, 5. (2) Tabitha Mills.

Senior 3-year olds, born Sept. 1, 2020 - Feb. 28, 2021; 16 entries: 1. Cessna Brothers with **C Cove Delta Lambda Ash**; 2. Sam McWilliams, 3. Molly Cessna, 4. Tyler Soden, 5. Diamond Valley Dairy, Juniors: (1) Paul Yoder, (2) Connor Walker, (3) Mikayla Buccieri, (4) Megan Bomgardner (5) Kelsey Wenger.

Intermediate champion, youth show: **Ricecrest Doc Dawn**, a junior 3-year old shown by Shaylin Reichard.

Reserve intermediate champion: **AAG-Dreams Helix Firefly**, exhibited by Aubrey Kitzmiller

Intermediate champion, open show: **Sweet-Peas Moving Camouflage**, a junior 3-year old shown by Tyler Soden.

Reserve intermediate champion: **Elmvue D Lambda Briskly-ET**, a senior 2-year old shown by Genetic Link.

4-year olds, born Sept. 1, 2019 - August 31, 2020, entries: 1. Sam McWilliams and Katie Darnell with **McWilliams Warrior Raine-ET**; 2. Sarah Campbell and Evan Creek, 3. Sarah Campbell and Evan Creek, 4. (1) Sara Stoltzfus, 5. Marsha Eckrote. Other Juniors: (2) Amelia Russell, (3) Sara Kennedy, (4) Kelsey Wenger, (5) Abbey Wolfe.

5-year olds, born Sept. 1, 2018 - Aug. 31, 2019; 9 entries: 1. (1) Tyler Soden with **Sweet-Peas Solomn Adrift-ET**; 2. Denise Pease, 3. Sam McWilliams, 4. DJ Glick, 5. Justin Kocher. Other Juniors: (2) Abbey Wolfe.

6 years and over, born prior to Aug. 31, 2018, 15 entries: 1. Sam McWilliams with **McWilliams Damion Grace**, 2. (1) Madison Soden, 3. (2) Connor Walker, 4. Diamond Valley Farm, 5. (3) Elizabeth Lentz. Other Juniors: (4) Anna Kennedy, (5) Owen Bomgardner.

150,000 pounds, three entries: 1. Sam McWilliams with **McWilliams Goldchip FASTER**; 2. Michael Yoder with **Dryhouse-M Corvette Jinny**; 3. Cody Walker with **Walk-Le Bob 2164**.

Produce of dam: 1. **Denise Pease**, 2. **Connor Walker**, 3. **Lucia Syndicate**.

Senior best three; 6 entries: 1. **Sam McWilliams**, 2. **Denise Pease**, 3. **Cessna Brothers**

Senior and grand champion, youth division: **Sweet Peas Solomn Adrift-ET**, the 5-year old shown by Tyler Soden. Reserve senior and reserve grand: **MS Opportunity Amanda-Red-ET**, the aged cow exhibited by Madison Soden.

Senior and grand champion, open division: **McWilliams Warrior Raine-ET**, a 4-year old exhibited by Sam McWilliams and Katie Darnell.

Reserve senior champion: **McWilliams Damion Grace**, an aged cow exhibited by Sam McWilliams.

Reserve grand champion: **Sweet-Peas Moovin Camouflage**, a junior 3-year old exhibited by Tyler Soden.

Best bred and owned, open show: **McWilliams Warrior Raine Red-ET**

Best bred and owned, youth show: **AAG-Dreams Helix Firefly**, a senior 2-year old shown by Aubree Kitzmiller.

3 PT. MOWER WITH ESM SICKLE BAR



FRONT MOUNTED CROP ROLLER



3 PT. 2 ROW CULTIVATOR

View Our Equipment:

i-jmanufacturing.com



(717) 442-9451

10 S. New Holland Road, Suite 2
Gordonville, PA 17529

SUPER SHAVINGS SAVINGS

Premium Fine Flake Pine Shavings

Opens to 6 Cu. Ft. (Dust Free) **\$6⁰⁰** /bale
Skid Lots Only (59 bales per skid)

Dairy farmers no. 1 choice in bedding

Delivery Available • Wholesale half and full loads

Premium Medium Flake Pine Shavings

2.5 Cu. Ft. Bale (Expands to 10.5 Cu. Ft.) **\$6³⁰**

Skid Lot Price (650 Cu. Ft. per skid) **\$6⁰⁰** /bale

Red Cedar Shavings

Skid Lot Only

\$10⁹⁹ /bale
(50 4 Cu. Ft. bales per skid)



1731 W. Main St., Ephrata, PA 17522
EphrataAgway.com

717-733-6593 • 800-379-0568
Mon.-Thur. 7:30-6 • Fri. 7:30-7 • Sat. 7:30-4

Margie Ann Dick embraced an adventurous life of service

WARRENTON, Va. — Margie Ann (Sutphin), who was the “face” of the Virginia Holstein community for decades, passed away as the sun rose on April 16th at Fauquier Hospital. She was 87 and is now reunited with her only love, co-pilot and dancing partner Goley “Albin” Dick who preceded her in 2012. Margie Ann was the only child and pride and joy of Ned and Florence Sutphin.

Margie Ann grew up on the family dairy, Flatlick Farm near Chantilly, Va. She joined 4-H and with the unwavering support of her parents began showing her Holstein herd. The entire family enjoyed traveling in the 40’s and 50’s to exhibit cattle at local, state, and regional shows including the Virginia, North Carolina, West Virginia state fairs and The Dixie Classic.

Margie Ann was tapped as a Virginia 4-H All-Star in 1952. In 1955 she was on the Virginia 4-H Dairy Judging team coached by Emory Brubaker and Bill Patterson, 4-H Dairy Extension specialist. She placed 14th in the national contest in Waterloo, Iowa.

She shared the story many times of walking into a pitch-dark room and giving her oral reasons out loud to what she hoped was a judge in the room, without ever seeing their face. In addition, she earned a Virginia 4-H State Dairy Achievement award which resulted in a trip by train to the National 4-H Congress in Chicago.

She received the Virginia Holstein-Friesian award three times and in 1956 won the National Holstein Girl Champion Production Record Keeping Contest.

In 1962 Margie Ann gathered her records and typed up her own detailed pedigree sale catalog for a public auction of her and Ned’s remaining cows and heifers. Four generations of the Sutphin/Dick family moved to Turkey Run Farm near Warrenton, Va. Margie Ann would recount how the family moved into the house, interior unseen, to highlight

just how much the entire family focused on the land and barns when making purchasing decisions.

In the late 70’s she put her knack for record keeping to work as membership secretary for the Virginia Holstein Association, managing the Holstein *World* account with 5 x 7 index cards for over 700 members. In 1979, she was asked to take over as secretary/treasurer and served for the next 35 years. She took the records from index cards and created the association’s first computer database with a Radio Shack Tandy computer and by the end of her service was clerking state shows and sales with a laptop ringside.

Representing Virginia Holstein Association at regional and national events, she attended 20 National Holstein conventions, often serving as a voting delegate. Over the years many Virginia Holstein members became friends and adopted family, some even keeping a spare room ready in case meetings ran long.

Margie Ann loved taking cattle to shows and fairs, sharing them with her peers and the public. Washing, getting the bedding just right and hand feeding hay was her specialty. If she was not in the barn she was at the desk, checking in entries, recording placings and sideline judging. She remembered the cows and the kids that were on the halters from show to show and year to year. She clerked and supervised the dairy and sometimes beef shows at the Fauquier County Fair, Prince William County Fair, Virginia Holstein shows and Virginia State fairs for too many years to count.

She remembered the 4-H All Star motto “Service” and gave back by serving as a



Margie Ann Dick

Fauquier County 4-H volunteer leader and serving the Fauquier Junior Fair as treasurer and Board member.

She combined her job with her love of driving. She and Albin criss-crossed the U.S. starting with a truck camper after they were married and moving up to a 5th-wheel trailer. In 1969 for a “little” family vacation, she drove their 1966 Ford Camper Special with a Covered Wagon truck camper from Warrenton, Va. to the Arctic Circle on the gravel Al-Can Highway and back to Seattle, Washington, in six weeks. Her parents flew to Seattle to take over for the return trip with camper and children. Then Margie Ann and Albin flew home on their one and only airplane ride.

She continued traveling to the National Holstein conventions from Maine to California and visiting family and attractions across the country for the next 50 years.

Margie Ann would change to different country radio stations based on the mile markers along I81, I64 & I95. She did all the driving, memorizing road numbers, exits and

landmarks because Albin was busy finding cheap gas and places to eat. Margie Ann was never in an accident and somehow dodged the speed traps.

Margie Ann leaves behind her grateful son, Dale D. Dick of Midland, daughter Patricia Ann (Patty) Leonard and favorite son-in-law Jeff Leonard of Warrenton. She was the proud grandmother of Sarah A. Leonard and husband Mike Kritzer of Warrenton, Katy Henson and husband Jackson Henson of Charlotte, N.C. and Elizabeth Noonon and husband David Noonon of Warrenton. She was able to welcome three great grandchildren, Allison Grace Ann Kritzer, Dempsey Reid Noonan, and Brooks Harding Henson into the family. She also leaves behind all her adopted family far and wide that called her “Grandma Margie”.

Because her passion was Holstein cows, kids with cows, and travel, “Grandma Margie’s” family is asking in lieu of flowers please remember her by donating to the Virginia Junior Holstein Association to be used to support the Junior Members traveling to the National Holstein Conventions and various Junior activities. Please send your donations to the Virginia Junior Holstein Association, 7511 Briery Branch Road, Dayton, VA 22821-3233




aAa Weeks
Michael McCaffrey, Analyzer

Mobile: 315-447-4699 • Mike.McCaffrey@aAaWeeks.com
58 James Street, Homer, NY 13077 • www.aAaWeeks.com

GRAHAM DAIRY SUPPLY INC.

1581 Business Rt. 66
Greensburg, PA 15601
(724) 834-3162

MILKBARN

11606 Greencastle Pk.
Hagerstown, MD 21740
(301) 223-6877

JBZ DAIRY ADVANTAGE

1044 E. Main St.
New Holland, PA 17557
(717) 354-8030

DeLaval Plus Behavior Analysis helps you to create a better To-do List:

Find Sick Cows

Find Cows in Heat

Find them Faster

- ✔ Rumenation
- ✔ Activity
- ✔ Cow Health Index
- ✔ One graph, easy to read
- ✔ Accurate Heat Detection
- ✔ Clear breeding window
- ✔ BA300 Cow Location
- ✔ BA300 Time in Zone





*Terms and conditions apply

A mother cat did what any good mother would do

By ARCHIE KING
Mifflin County Farmer

Meow! Meow! Meow! Oh you poor little kittens – your mother is gone and we don't know where to find her!

This is a story of how a mother cat and her kittens were accidentally separated and miraculously re-united.

Back home on the farm we had a very special cat named BJ. She was given to us by Uncle Mark King and had a short stubby tail like a bobcat. Of all us 10 children, Janet was the cat lover of the family.

Over the years BJ, had many litters of kittens and to Janet, every litter was special! To most of us, cats were cats – who cares! But it was always interesting when BJ had kittens, to see who could find the nest. BJ always hid them well; they were hard to find.

One day Janet proclaimed that BJ had another litter of kittens – she “could tell”! We looked and hunted for those kittens, but nobody could find them!

Soon after, on a Wednesday, Pop (Herbert) took a calf to the Belleville Sale Barn. He backed up to the dock to unload the calf and there, in the corner of the cattle truck bed was BJ and her nest of kittens! Of all places! He unloaded the calf and went to the poultry barn to buy a rooster, never thinking what might happen.

Not having a chicken crate, he bought the

rooster, opened up the stock bed roller door, threw in the rooster, and closed the door. Well, the rooster started cackling and raising an awful fuss! Poor BJ – this was just too much – a total invasion of privacy! She jumped off the truck and ran for what appeared to be “the next county”! Now what?! Pop needed to go home – without BJ. It was milking time! Dumb cat anyway!!

Well, Pop came home and, probably over supper, told all of us the sad story of the very hungry newborn kittens on the back of the stock truck, and mother BJ six miles away maybe somewhere in Belleville! Janet was heartbroken – the kittens were so small and would not survive without momma BJ! What can we do?!

Every fourth Wednesday of the month the church youth group would gather at Valley View Nursing Home to sing for the elderly folks who live there, and this was the evening to go sing. Well, Pop had an idea. We think it was more out of compassion for Janet's sake than for the kittens, but that is unknown! When we go to sing, we take the stock truck along and drop it off at the sale barn, pull the keys, and leave it there overnight. Would it work? Would BJ come back to her kittens?

Remember the story in Daniel 6 where



This is not “BJ”; just a common representative of the species. *File photo*

softly! They moved the family into the cardboard box. Janet headed happily for home, and Pop went to pick up cows! BJ found her kittens right where she lost them! Oh, a mother's love; how precious!

Dear friends – how much greater is God's love for sinful men! We read of that love in John 3:16. If we are a part of the family of God, we have many precious promises in God's Word.

In Isaiah 49:15 we read, “Can a woman forget her suckling child, that she should not have compassion on the son of the womb? Yea, they may forget, yet will I not forget thee”.

In all of life's joys and sorrows, trials, and disappointments, God will not forget his children. In Hebrews 13:5 we have this promise, “I will not leave thee nor forsake thee”!

And if for any reason we lose that close fellowship with our Heavenly Father, we will find Him right where we lost Him!

In the month of May we have Mother's Day. How very precious is a mother's love! It is very sad that some have been forsaken by their mother, and never experience her love.

If this has been your lot in life, I trust you have experienced a mother's love – maybe by an adopted mother or a precious mother-in-law. But no matter what – God loves you and me and has promised not to forget us or forsake us! Oh, a Mother's love!

Happy Mother's Day!

Patz

BEHIND A CLEAN COW IS A PATZ MACHINE!

SAVE ON 400 CHAIN THROUGH MAY 31ST. CONTACT LOCAL DEALER FOR DETAILS.

PATZ CORPORATION POUND, WI 920-897-2251

CERTIFIED ORGANIC CATTLE WANTED

NICHOLAS MEAT LLC

Modern Meat Processor Paying a Premium For Your Certified Organic Cattle

Purchasing on Dressed Weight and Grade Basis

Nicholas Meat LLC is an approved Certified Organic Meat Processor. We are looking to purchase all your Certified Organic Cattle. Customers can deliver cattle to the plant Monday through Friday 7 A.M. to 1:30 P.M. Nicholas Meat LLC has also established several collection points.

Cattle can be taken to:

Vintage Sales Stables, Inc.

3451-3457 Lincoln Highway East, Paradise, PA 17562
Every Thursday from 9 A.M. to 3 P.M.

Weikert Buying Station

721 Carrolls Tract Rd., Fairfield, PA 17320
Mondays from 9 A.M. to 4 P.M.

New N.W. Sales Company

2006 Mercer-New Wilmington Rd., New Wilmington, PA 16141
2nd and 4th Monday of each month.

Belleville Livestock Market

26 Sale Barn Lane, Belleville, PA 17004
Every Wednesday.

R&C Calf Farms, LLC

13071 Emerson Rd., Applecreek, OH 44606
Mon. -Thurs. 9 A.M. to 2 P.M. (Behind sale barn in Kidron)

Please bring a copy of your Organic Certificate with each shipment!

Please call the number below to inquire about these collection points or to schedule your sale of Certified Organic Cattle to Nicholas Meat, LLC.

NICHOLAS MEAT LLC

508 East Valley Road, Loganton, PA 17747
Please call Nicholas Meat LLC – 570-725-3511

PENNSYLVANIA

Mercersburg	Cedar Crest Equipment LLC	717-660-0060
Myerstown	Cedar Crest Equipment LLC	717-866-1888
Quarryville	Cedar Crest Equipment LLC	717-529-2782
Troy	Fallbrook Fabrication	607-426-0592

VIRGINIA

Harrisonburg	C&C Farmers Supply Corp.	540-433-8532
--------------	--------------------------	--------------

NEW YORK

Collins	A.R. Timmel	716-532-2040
---------	-------------	--------------

Territory Sales Manager

Paul Kratz • 920-897-9212
paulkratz@patzcorp.com



LELY LEADS IN DAIRY INNOVATION!



**Matt Brake: Full-time Farmer,
Part-time Lely Center Mid-Atlantic Salesman!**

“Two years after installing Lely Robotics, I’ve found the freedom to pursue my passions beyond the farm. Now, as a full-time Dairy Farmer and a part-time Salesperson for Lely Center Mid-Atlantic, I’m living the best of both worlds! Thanks to the flexibility of Lely Robotics and my dad’s willingness to hold the fort down on the farm, I’m able to share the innovation of Lely Solutions with fellow farmers while continuing our family legacy.”

**– Matt Brake, Oakleigh Farm,
Pennsylvania’s first fully
automatic Red Lely Barn**



OAKLEIGH FARM’S LINEUP

- ✓ 2 Astronaut A5 Milking Robots
- ✓ 2 Luna Brushes
- ✓ 2 Discovery Collectors
- ✓ 1 Vector Feeding Robot

**SEE A DAY IN THE LIFE
OF OAKLEIGH FARM!**

Join Matt as he takes over Lely Center Mid-Atlantic’s Facebook page on Tuesday, May 21st!

www.facebook.com/lelycentermidatlantic

OR SCAN THE QR CODE →



To Learn More About Lely Center Mid-Atlantic Products Today, Call: **Matt Brake 717.830.1273**



100 Newport Road • Leola, PA 17540 • 717.656.3307 • www.LelyCenterMidAtlantic.com

LelyCenterMidAtlantic @LCMidAtlantic

Directory of Building Contractors

for new and renovated dairy facilities and other farm buildings



RYAN SERVICES, INC.
Building Relationships
Joseph M. Ryan
3179 Quaker Valley Road
New Paris, PA 15554
info@ryanservicesinc.com
Cell: 814.285.6129 Office/Fax: 814.839.4826



DAIRY HOUSING CONSTRUCTION & REMODELING
Free Stall Barns • Tie Stall Barns
Heifer Barns • Calf Barns • Robotics
Special Needs • Manure Handling
Quality & Value in Construction
(800) 845-3374 **FARMER BOY** FarmerBoyAg.com
✓ Parts You Need... ✓ Brands You Know... ✓ Prices You Can Afford.

Specializing in construction & renovation of agricultural buildings

Dairy Facilities • Pole Barns • Free Stall Barns
Concrete Work • Reroofing • Horse Barns

WHITE HORSE CONSTRUCTION
1-888-385-2360 • 1-610-593-5559

E&F Ag Systems
Ag Construction & Equipment
New freestall & heifer barns.
Freestall barn renovations.
We specialize in all types of dairy curtains.
2812 Old Phila. Pk. (717) 768-0304
Bird in Hand, PA 17505



King
Premier Dairy Facilities
Dean Hoover
King Construction Co., LLC Office: (717) 354-4740
525 Hollander Rd. Cell: (717) 304-4993
New Holland, PA 17557 dhoover619@comcast.net

Building Contractors:
Our directory of building contractors runs the 2nd and 4th weeks of each month. Call our advertising department to find out how to be included.
717-656-8050



Keystone Concrete Products, Inc.
477 E. Farmersville Rd.
New Holland, Pa. 17557



(717) 355-2361 - corporate office
(717) 355-9548 - fax
keystoneconcreteproducts.com

NEED THAT BUNKER? CALL ASAP TO RESERVE YOUR WALLS!!!



Secure Cover Dealer

Financing Available

Agricultural Pre-cast Products Available:

T & L Shaped Precast walls 8'6", 12'6" & 16' high
Straight Back J-Bunk
Slant Back J-Bunk
H-Bunk
Precast Concrete Box Culverts
Cattle "Waffle Slat" Moisture cured, 8000 psi concrete New 8" thick for Heavier Equipment
Cattle Guards Avail. 12' & 16' Lengths

HAUSA has position open for a regional for sales rep.

BRATTLEBORO, Vt. — Holstein Association USA is looking for a regional sales representative for eastern Pennsylvania, New England, Delaware, Maryland and New Jersey. The candidate must reside in southeastern Pennsylvania.

- The Association is looking for a candidate with:
- A bachelor's degree in dairy science, animal science, or related field, preferred
 - Five years of dairy industry experience, preferred
 - Three to five years of sales experience, preferred
 - Competencies and requirements include:
 - Must have a valid driver's license and insurable driving record
 - Knowledge of the U.S. dairy industry, dairy cattle management, genetics, and the Registered Holstein business
 - Exceptional sales skills
 - Excellent cattle evaluation skills
 - Excellent communication skills
 - Very strong attention to detail and organizational skills
 - Positive, professional, and enthusiastic attitude
 - Ability to travel 75% of work time
- Questions can be directed to Human Resources at employment@holstein.com

World Dairy Exposition looking for four interns

MADISON, Wis. — As the 57th World Dairy Expo approaches, Expo is searching for college students passionate about the dairy industry to be part of the 2024 media team. Four students will be hired to experience the storied event as media interns.

Under the direction of Expo's communications specialist, media interns assist with media initiatives at World Dairy Expo and the management of the Media Room, Expo's on-site resource for reporters, writers and photographers.

This week-long internship in Madison, Wisconsin provides students with an active role in writing press releases, creating social media content through multiple platforms and contributing to Expo's on-site newspaper while engaging with media professionals and dairy industry representatives from around the globe.

"The media intern team plays an integral role in successfully executing this must-attend event for the global dairy industry," shares Jenna Langrehr, WDE communications specialist. "Expo is delighted to once again offer this invaluable opportunity to students from across the country who are passionate about the dairy industry and looking for a great hands-on experience."

Qualified applicants are actively pursuing a bachelor's or master's degree in a dairy, agriculture, or communications-related field with excellent written and verbal communication skills. Students should visit World Dairy Expo's website, www.worlddairyexpo.com, and select "Careers & Internships" under the "About Expo" tab for the complete job description and all pertinent application details. Questions about this position should be directed to Langrehr at jlangehr@wdexpo.com.

Planning on replacing an existing roof or constructing a new building?



THINK LIFETIME
THINK METAL

Martins Roofing • 717-532-3460
260 Walnut Bottom Road • Shippensburg, PA 17257

NELSON & SONS CONCRETE GROOVING
FULL SURFACE & WIDE GROOVING
We've Expanded!
NOW 2 LOCATIONS - PA & NY
2nd Branch Located in Finger Lakes, NY
Serving PA, NY, & Surrounding States



610-589-1030
Save Cows, Save Your Profit Margins
www.NelsonandSonsConcreteGrooving.com

By **SHERRY BUNTING**
Special for Farmshine

HARRISBURG, Pa. — The legal battle continues for NoBull Solutions LLC partners Rusty Herr of Lancaster County and Ethan Wentworth of York County. Both Pennsylvania men have been jailed in their respective county prisons since April 10 and 11, respectively.

They were arrested for contempt of court after failing to respond to a May 2023 contempt order and failing to comply with a 2021 investigative subpoena by providing the name and address of NoBull's custodian of records as well as the names and addresses of all members, managers, and other persons who direct its activities, according to the recently unsealed docket 325-MD-2021.

Herr and Wentworth will have served their 30-day commitments by this weekend (May 10 and 11, 2024).

According to counsel Robert Barnes, Esq. of Barnes Law LLP, a Petition for Writ of Habeas Corpus has been filed with the Pennsylvania Supreme Court after a Commonwealth Court Judge denied their motion for immediate release and unsealed the docket in two separate actions on April 29, 2024.

Barnes maintains that certain procedures must be followed in a civil contempt action.

"To our knowledge those were not followed here. Wentworth and Herr were not given an opportunity to purge contempt in order to secure their release from prison — an essential requirement of civil contempt, which makes this de facto criminal contempt — a violation of Pennsylvania law," Barnes states in an email response to Farmshine.

Even though the 30-day sentences may be completed before the State Supreme Court hears their appeal, Barnes says his office will "pursue the appeal to restore proper jurisdictional basis and to force the state agencies to adhere to the Pennsylvania Constitution and the Administrative Procedures Act."

Former Pennsylvania Department of Agriculture counsel and current staff attorney with the Penn State Center for Agricultural and Shale Law, Brooke Duer, Esq. told WPMT-Fox43 that the now unsealed docket shows the "civil processes for contempt are all there and were followed."

The April arrests stemmed from prior actions by the State Board of Veterinary Medicine, which led to a Feb. 2020 complaint filed by the Pennsylvania Veterinary Medical Association (PVMA) one month before the Covid shutdown.

The PVMA alleged that Herr and Wentworth continued practicing veterinary medicine by ultrasounding other farmers' cows in connection with NoBull's breeding management service. PVMA asked for contempt charges through Commonwealth

Court as part of that 2020 complaint.

The Department of State initiated its investigation in early 2021, issuing a subpoena order for the names and addresses of custodian of records and all parties involved in or directing activities in the business.

Both men failed to comply with the subpoena or to challenge it, according to the now unsealed docket.

"Some of us thought this had more-or-less gone away," said Duer in the televised interview on May 2. "So, it's kind of surprising. All of a sudden it's back on again?"

Duer said there is no evidence that the men responded in any way or represented themselves since 2021.

(Prior dockets show they did represent themselves in prior State Vet Board actions, Herr in 2010 while he was still milking his own dairy herd, and Wentworth in 2018 while he was employed as an AI technician by Select Sires.)

"They had not only a few opportunities to come forward and prevent this kind of an outcome, but those opportunities were multiple..." said Duer.

According to the unsealed documents, a Commonwealth Court judge signed "Orders to Commit" on October 6, 2023, which resulted in the April 2024 arrests.

The more immediate question is: Were they given the oppor-

tunity to purge the contempt at the time of arrest and incarceration, as would appear to be the process with civil contempt, according to an ACLU or Pennsylvania guide to contempt proceedings.

The deeper questions center around the future: What will happen next in terms of a level playing field for smaller farms looking to gain the benefits of integrating ultrasound into breeding management, but are not large enough to have employees trained to do it or vet practices willing to station their vet techs at small farms to do it.

Of the NoBull customers who have contacted this reporter, nearly 90% want this integration, while they still intend to maintain their veterinary relationships through regular herd checks.

A January 2024 *Progressive Dairy* article by a Genex consultant examined how integrating ultrasound with breeding management is revolutionizing reproduction on U.S. dairies that are faced with the need for swift information to make economic decisions in a highly competitive, tight-margin dairy business.

Owners of small dairy farmers continue to contact this reporter wondering what they can do about this. "How can we help?" they ask.

We can't make your cows dance but we can make them more comfortable and productive with **effective fly control!**



Our Fly Control for Dairy Farms Features Three Products

- Start with a fly parasite Plan. It is basic to fly control.
- Add some cedar fly traps that take out existing flies and help fly parasites take over.
- Have an electronic zapper or two or three for inside fly control - they keep on zapping!

The Best Fly is a Dead Fly. Even Better Is No Fly.



NO PRICE INCREASES THIS YEAR

Call to Start Your Plan Now!
P.O. Box 4350, Homosassa Springs, FL 34447
www.dairyflyparasites.com
or email: usefullfarm@gmail.com

Call 1-888-771-3276

Useful Farm Products

Offering a Full Line of Ag Seed

Forages - Cover Crops - Small Grains - Corn - Soybeans

SORGUM PARTNERS®
A BRAND OF S&W SEED COMPANY
Grain Sorghum
-SP 30A30
-SP 45A45
-SP 58M85

Double Team®
SORGHUM CROPPING SOLUTION
- Superior Grass weed control
- Improved yield potential

Sudangrass & Sorghum-Sudangrass

SweetLea 405 Sudangrass
- BMR 6, Photoperiod Sensitive, Fine stems, Wide leaves

SavorLea 471 Sorghum-Sudangrass
- BMR 6, Good vigor, Widely adapted, Great yielder

SunLea 209 Sorghum Sudangrass
- Biomass builder, Economical Forage or Cover Crop option

ST 2090 BMR BD Forage Sorghum
- Brachytic Dwarf, BMR, Short season

ST 2105 BMR MS Forage Sorghum (Male Sterile)
- Energy comparable to com silage with 8 - 10% protein

JACOBSEN **J3817 GT Soybeans**
Excellent for Full Season or Double Crop
Remarkable health
3.8 Group Rating

LEABROOK AG
"Helping You Cover Ground"
2278 Leabrook Rd. Lancaster, PA 17601
(717) 898-9576

Double Team **SORGUM PARTNERS** **ALFALFA PARTNERS**
Hefty **ZINESTO** **JACOBSEN** **SEEDTIME**

Power Systems Electric Inc.

Emergency Generator Systems & Service
885 South Railroad Street, Myerstown, Pa 17067

Sales, Service, & Rentals
Providing service for most brands



Maintenance Programs

New & Used Gen Sets, Transfer Switches, PTO Gens.




24 HR EMERGENCY SERVICE

info@psegenerators.com
www.psegenerators.com


For all your generator needs call (717)933-5617

Butlerview Farm


MEMORIAL DAY EXTRAVAGANZA



LEHOUX VICTOR TOPAGE
Supreme JC Royal Winter Fair '23 All-American Winter Yearling 2023 Topage is fresh and looks fantastic - she sells!



LUNCREST AUSPICIOUS-2250-ET VG-88
Fresh in April with her 2nd calf, this is a big time cow for 2024! Backed by three EX-94 dams - the Adeens!



ESPERANZA-CC THUNDERSTRUCK EX-92
HM All-Am Junior 3-Year-Old 2022 Ready for her 5-Year-Old campaign! Thunderstruck sells with her Denver dau. - the Inspiration Tina family!



BUDJON-VAIL DLAM ANDOVER-ET VG-89
Big pedigree from the Ashlyns and a junior 3-year-old for 2024! Andover sells fresh with her 3/24 Footprint and 9/23 & 12/23 full sisters!

SALE MANAGER
1515 Kepner Hill Rd.
Muncy, PA 17756
570-546-6907 | fraleyauction.com
Lic. AY001971

SALE STAFF
Adam Fraley • 570-772-6837
Jeff Butler • 217-341-2437
illinjiet@aol.com
Jim Butler • 847-987-5813
jimbutler2@aol.com

FARM MANAGERS
Joe Price • 765-618-5479
Amber Price • 765-661-4027

Friday, MAY 24, 2024
Starting 11 a.m. CDT
At the farm • Chebanse, IL

100 Lots of High-Type Cattle Sell!
Deep Pedigrees • All-Americans
Great Production

APRIL 2024

Adams County

APPLE VALLEY CREAMERY	107 XX	25235	1111	861
HILLCREST DAIRY	317 HO	25073	1010	781
CIRCLE CREEK HOL.	218 HO	24496	955	761
SPUNGOLD HOLSTEINS	96 XX	20905	842	664
KENNETH WENGER	238 XX	19110	951	643
HERDS WITH A RHA SCC LESS THAN 200,000				
CIRCLE CREEK HOL.	HO	87		218
APPLE VALLEY CREAMERY	XX	126		107
SPUNGOLD HOLSTEINS	XX	130		96

Armstrong County

SHIREY FARM	437 HO	22663	830	697
LARA WILSON SHIELDS	28 HO	19622	744	628
HERDS WITH A RHA SCC LESS THAN 200,000				
LARA WILSON SHIELDS	HO	157		28

Beaver County

WALLACE CITY FARM	54 HO	20476	822	675
-------------------	-------	-------	-----	-----

Bedford County

GLENDON EBY	151 HO	23137	857	690
MANOR MEADOWS FARM	99 HO	19091	745	612
HERDS WITH A RHA SCC LESS THAN 200,000				
GLENDON EBY	HO	102		151

Berks County

MISTY MOOR HOLSTEINS	78 HO	30586	1263	1002
DAVIEY FARM	65 HO	29670	1211	965
SUNRISE FARM	43 HO	31130	1194	938
CYRUS & JENNY GEHRINGER	98 HO	30127	1109	910
ADAM NOLT	39 HO	28623	1118	892
SHAYNAH KEE FARM	80 HO	29256	1104	884
EARL HAFER & SONS	226 HO	28950	1063	883
MERLIN & CRYSTAL GOOD	87 HO	28187	1111	882
DON & AMY RICE	90 HO	28503	1077	848
LARRY GRUMBINE	159 HO	26628	1091	845
NORTHKILL CREEK FARM	113 XX	26126	1056	842
MARTIN & MISSY MOYER	75 XX	28196	954	837
MICHAEL HAAG	88 HO	26725	1123	836
WALNUTRIDGE HOLSTEINS	123 HO	25935	1083	833
DON & AMY RICE	105 HO	27437	1050	825
MARK A KIEFFER	70 HO	25180	1005	823
SCATTERED ACRES, INC.	379 HO	26024	1060	813
KIRBYVILLE HOLSTEINS	97 HO	25039	1052	809
BRYAN YOUNKER	104 HO	24919	971	805
VISTA GRANDE FARM	236 HO	26022	1028	796
JAY GRUBE	89 HO	25213	1016	785
WAY HAR FARMS	272 HO	24765	986	769
VISTA GRANDE FARM	283 HO	24804	991	768
CRM FARM	77 HO	23446	961	763
OLEY TURNPIKE DAIRY	172 HO	22818	981	762
ARLAN KRICK	112 HO	25143	931	750
WAY HAR FARMS	297 HO	23956	955	746
ARDOUNIE FARM, INC.	173 HO	22312	965	742
JAMES & JAN ADAM LLC.	139 HO	22358	763	740
J. & MONICA HUNSBERGER	58 HO	23424	909	740
WHIRLWIND ACRES	160 HO	23448	929	732
YOUNKERS PRIDE	71 HO	22227	901	704
SHOW TOP FARMS	193 HO	22191	937	683
JUSTIN & RENEE TROUTMAN	110 HO	20219	810	677
DON & AMY RICE	15 XX	20663	881	674
VISTA GRANDE FARM	29 JE	18844	815	651
R LOST CREEK FARM	67 HO	20126	785	634
BEN & CAIT ROHRBACH	53 HO	20774	802	629
FURNACE STREAM FARM	36 HO	18696	675	583
VISTA GRANDE FARM	15 GU	17433	753	560
HERDS WITH A RHA SCC LESS THAN 200,000				
VISTA GRANDE FARM	JE	115		29
NORTHKILL CREEK FARM	XX	116		113
MICHAEL HAAG	HO	121		88
CYRUS & JENNY GEHRINGER	HO	122		98
CRM FARM	HO	123		77
SUNRISE FARM	HO	124		43
MERLIN & CRYSTAL GOOD	HO	125		87
DON & AMY RICE	HO	126		90
DON & AMY RICE	HO	128		105
SCATTERED ACRES, INC.	HO	132		379
JUSTIN & RENEE TROUTMAN	HO	132		110
MISTY MOOR HOLSTEINS	HO	140		78
ROY & AMY RICE	XX	141		15
ADAM NOLT	HO	143		39
SHAYNAH KEE FARM	HO	152		80
LARRY GRUMBINE	HO	154		159
WAY HAR FARMS	HO	160		272
VISTA GRANDE FARM	GU	162		15

WAY HAR FARMS	HO	165		297
J. & MONICA HUNSBERGER	HO	169		58
BEN&CAIT ROHRBACH	HO	174		53
KIRBYVILLE HOLSTEINS	HO	185		97
VISTA GRANDE FARM	HO	197		283
DAVIEY FARM	HO	197		65

Bradford County

GLENORA RIVER ACRES	284 HO	25608	1030	786
WALKER DAIRY	63 HO	23484	893	770
ALLFORD, JOHN & HOLLY	57 HO	24646	952	769
CHAMPDALE FARM	118 HO	22829	894	702
JAMES & GABRIELLE SHEDDEN	86 HO	21900	820	659
NATE JUDSON	43 XX	19986	850	652
J & C ACRES	34 HO	21990	826	634
PETE SWAIN	33 JE	16939	833	617
WILLIAM & GRETCHEN S.	60 HO	18424	759	588
REAGAN FARMS	70 HO	18351	727	580
PECK HILL FARMS	163 HO	17899	755	574
DENISE FEUSNER	38 JE	14150	656	518
ROBIN & RYAN KINGSLEY	54 XX	16355	593	509
HERDS WITH A RHA SCC LESS THAN 200,000				
DENISE FEUSNER	JE	53		38
J & C ACRES	HO	76		34
GLENORA RIVER ACRES	HO	131		284
ALLFORD, JOHN & HOLLY	HO	175		57
JAMES & GABRIELLE SHEDDEN	HO	191		86

Bucks County

BRENDA & JIMMY HARRIS	64 HO	25501	1099	814
MARWELL DAIRY FARM	68 HO	25031	956	754
HERDS WITH A RHA SCC LESS THAN 200,000				
BRENDA & JIMMY HARRIS	HO	105		64
MARWELL DAIRY FARM	HO	197		68

Butler County

THIELE FARM	47 HO	29497	1168	882
HARTZELL FARM	278 HO	28011	1011	847
DROVERS INN	146 HO	26873	1054	841
FOUR SEASONS FARM	10 JE	21266	986	816
COLTON & JEN SCHIEVER	155 HO	25594	1042	801
UNDER GRACE DAIRY	51 HO	27040	998	797
FOUR SEASONS FARM	67 BS	19941	843	725
FOUR SEASONS FARM	57 BS	19726	820	711
JAY RENO	25 HO	20167	760	627
HERDS WITH A RHA SCC LESS THAN 200,000				
UNDER GRACE DAIRY	HO	143		51

Cambria County

BRENT LOWMASTER	177 HO	27563	1110	880
VALE WOOD DAIRY	285 HO	26514	1065	861
BARR RIDGE FARM LLC.	181 HO	23937	979	801
HERDS WITH A RHA SCC LESS THAN 200,000				
VALE WOOD DAIRY	HO	81		285
OLEY RIDGE FARM LLC.	HO	153		181

Centre County

MURMAC FARMS	1885 HO	32108	1323	1016
PENN STATE UNIVERSITY	259 HO	28192	1181	898
PENNDILL FARMS	83 HO	29118	1157	897
TODD E. & GREG T. WOOM	73 HO	26758	1202	835
S. & J. SWARTZ	74 HO	26559	1060	829
KENNETH C. GEPHART	66 HO	25574	1012	801
HAAGEN FARM	38 HO	25134	1071	798
D.J. & THELMA GLICK	72 HO	26225	991	788
BROOK WAY HOLSTEINS	138 HO	25503	1204	759
MITCHELL BROWN	60 HO	23231	985	734
NITTANY RIDGE HOLSTEINS	69 HO	24084	924	722
ROD & BIL BRUSS	51 HO	22446	861	719
BARBARA ROSSMAN	77 HO	22647	841	680
HAROLD E. HARPSTER	58 JE	17933	1072	663
HERDS WITH A RHA SCC LESS THAN 200,000				
D.J. & THELMA GLICK	HO	90		72
MURMAC FARMS	HO	134		1885
PENN STATE UNIVERSITY	HO	143		259
HAAGEN FARM	HO	153		38
BROOK WAY HOLSTEINS	HO	174		138
MITCHELL BROWN	HO	175		60

Chester County

ROY & RUTH ANN BENDER	133 HO	34348	1375	1059
ROY & RUTH ANN BENDER	221 HO	32758	1309	1006
WALMOORE HOLSTEINS	1069 HO	31684	1223	992
ROY & RUTH ANN BENDER	88 HO	30375	1210	927
KING DAIRY LLC.	158 HO	29540	1174	911
ONE WAY HOLSTEIN	152 HO	29060	1162	899
DREAM RIDGE HOL. LLC.	80 HO	27682	1075	854

MARSHAK DAIRY (NBC)	184 HO	25765	1080	808
HERBETH FARMS	66 HO	24688	995	776
BROOKVILLE FARMS	74 HO	25120	990	755
MAPLE HALL	66 HO	24315	791	724
DUANE STOLTZFUS	48 HO	20578	850	643

HERDS WITH A RHA SCC LESS THAN 200,000

MARSHAK DAIRY (NBC)	HO	78		184
ROY & RUTH ANN BENDER	HO	115		88
ONE WAY HOLSTEIN	HO	116		152
ROY & RUTH ANN BENDER	HO	123		221
ROY & RUTH ANN BENDER	HO	128		133
WALMOORE HOLSTEINS	HO	129		1069
BROOKVILLE FARMS	HO	190		74
KING DAIRY LLC.	HO	199		158

Clarion County

HENRY FARMS OF KNOX LLC.	96 HO	27132	1036	844
HERDS WITH A RHA SCC LESS THAN 200,000				
HENRY FARMS OF KNOX LLC.	HO	80		96

Clearfield County

KENNIS DAIRY FARMS	100 HO	26639	1088	871
SANKEYCREST FARMS	68 HO	24023	1368	765
HICKS DAIRY	215 HO	22309	892	716

Clinton County

SCHRACK FARMS	1442 HO	27182	1127	875
MEYER DAIRY FARM LLC.	240 HO	25147	1035	808
AQUILLA STOLTZFUS	62 HO	23237	937	721
SCENIC MEADOWS FARM	52 HO	23319	1114	716
HERDS WITH A RHA SCC LESS THAN 200,000				
MEYER DAIRY FARM LLC.	HO	68		240

Columbia County

WHITENIGHT FAMILY FARM	23 XX	15954	697	525
HERDS WITH A RHA SCC LESS THAN 200,000				
WHITENIGHT FAMILY FARM	XX	139		23

Crawford County

TRCP FARM LLC.	11 BS	26830	1122	916
TRCP FARM LLC.	72 HO	29193	1106	910
TRCP FARM LLC.	95 HO	28380	1097	901
FOSTERS FAMILY FARM	105 HO	26184	1173	883
TRCP FARM LLC.	13 XX	25228	1033	843
JOSEPH M. VORISEK	62 XX	25502	1001	804
HERDS WITH A RHA SCC LESS THAN 200,000				
FOSTERS FAMILY FARM	HO	119		105
TRCP FARM LLC.	HO	151		72
JOSEPH M. VORISEK	XX	173		62
TRCP FARM LLC.	HO	195		95

Cumberland County

BRYMESSER FARMS	250 HO	30772	1334	996
MATHEW WEAVER	103 HO	25330	1025	794
LEHMAN VIEW FARMS LLC.	97 HO	23803	981	746
J&S DAIRY	80 XX	21655	837	703
HENSEL	80 HO	19896	843	663
FOUNTAINVUE	111 HO	18678	681	586
HERDS WITH A RHA SCC LESS THAN 200,000				
BRYMESSER FARMS	HO	103		250
HENSEL	HO	125		80
MATHEW WEAVER	HO	144		103
LEHMAN VIEW FARMS LLC.	HO	145		97

Dauphin County

STONEY LAWN FARMS	167 HO	27952	1031	856
TY & TRACY LONG	129 HO	25423	1025	779
WINDY KNOLL FARM	48 HO	25610	913	771
LEHMANSTEAD FARMS	162 HO	23083	973	757
ISAAC LEE ZOOK	48 HO	21496	852	651
HERDS WITH A RHA SCC LESS THAN 200,000				
TY & TRACY LONG	HO	160		129
WINDY KNOLL FARM	HO	167		48

Elk County

PIERRE PONTZER	87 HO	20614	844	642
PAUL SWANSON	62 HO	18763	747	584
HERDS WITH A RHA SCC LESS THAN 200,000				
PIERRE PONTZER	HO	116		87

Erie County

TWIN CREEKS FARM LLC.	529 HO	27859	1133	874
LIND FARM	65 HO	22900	947	744
KIDSTREAT	121 HO	21559	914	712

PALNEL FARM	126 HO	19839	844
-------------	--------	-------	-----



For Records Processed Through DRMS Raleigh
800-344-2697 • www.dairyone.com

WINGERT FARMS	HO	155	1301
LAUREL RUN FARMS LLC.	HO	164	117
DIAMOND VALLEY FARM	HO	170	153
LOCUST LANE FARMS	HO	192	557
EVERGREEN FARMS, INC.	HO	196	3447

Indiana County

BLOSSOM HOLLOW FARM	125 HO	27934	1108	907
GREEN PARK FARM	65 HO	26896	1157	903
LARRY H. MARSHALL	48 HO	27960	1010	866
DAN L. HANCOCK	120 HO	21725	850	697
PLEASANT VIEW FARMS	230 HO	21820	859	645
JARRETT SHERRY	59 HO	19213	730	605

HERDS WITH A RHA SCC LESS THAN 200,000

DAN L. HANCOCK	HO	151	120
GREEN PARK FARM	HO	152	65

Jefferson County

MOWREYS SPRUCELAWN	113 HO	28150	1159	882
JOSEPH JE BYLER	39 HO	28824	1180	866
MOWREYS SPRUCELAWN	137 HO	27097	1123	860
DAN KELLER	23 HO	27675	1042	848
LONDONDALE FARM	62 HO	24033	968	760
MOWREYS SPRUCELAWN	24 BS	22038	950	749

HERDS WITH A RHA SCC LESS THAN 200,000

MOWREYS SPRUCELAWN	BS	131	24
DAN KELLER	HO	175	23

Juniata County

KURTZ VALLEY HOLSTEINS	407 HO	28821	1126	909
SHERTZER FARM	96 HO	28508	1096	884
MATT & BOBBI JO GRAYBILL	84 HO	27323	1021	839
CHARLES & TAMMY KLINE	82 HO	28156	1025	830
MARCUS J. ZOOK	89 HO	26139	1041	826
MARLIN SHARON CHARLT	58 HO	25174	1039	808
J. SCOTT LANDIS & SON	95 HO	26118	998	797
CENTERVIEW FARM	131 HO	22860	906	738
E. MARLENE PEOPLES	131 HO	22979	839	706
COCOLAMUS FARM	46 XX	17952	724	575

HERDS WITH A RHA SCC LESS THAN 200,000

SHERTZER FARM	HO	137	96
KURTZ VALLEY HOLSTEINS LLC.	HO	146	407
J. SCOTT LANDIS & SONS	HO	177	95
MARCUS J. ZOOK	HO	184	89
CHARLES & TAMMY KLINE	HO	186	82
MATT & BOBBI JO GRAYBILL	HO	191	84

Lackawanna County

PAUL MANNING	120 HO	19009	862	618
--------------	--------	-------	-----	-----

Lancaster County

LAVERNE REIFF	81 HO	24134	964	778
---------------	-------	-------	-----	-----

Lebanon County

BRANDT VIEW FARM	110 HO	30178	1302	969
LEON E. MARTIN	71 HO	29141	1007	930
BROOK CORNER HOLSTEINS	402 HO	29598	1151	914

QUENTIN HORST	148 HO	29351	1144	912
DNR HOLSTEINS	114 HO	27865	1137	893
WHITE BIRCH FARM	155 HO	28309	1147	885
GARY LENTZ	117 HO	27528	1055	874
KEVIN & ALLISON SELLERS	59 HO	28304	1090	872
PROMISE LANE FARMS	104 HO	27221	1048	872
HELLINGER FARMS LLC.	78 HO	27117	1063	869
MARK M. HOOVER	98 HO	27406	1131	863
OBIEVIEW HOLSTEINS	110 HO	26761	1037	858
NATHAN MULLEN	83 HO	27319	995	854
CARISTONE FARM LLC.	252 HO	26354	1070	847
JERE BRUBAKER	142 HO	26449	1080	846
LYNNCREST HOLSTEINS	52 HO	27773	964	842
BRUCE BOLLINGER & FAMILY	98 HO	27485	1080	841
DREAMLEA HOLSTEINS	95 HO	26505	1031	835
DEW MIST HOLSTEINS	229 HO	28496	1131	834
DARREN WISE	137 HO	26526	1036	830
MARK & STEPH PATCHES	82 HO	27043	1015	820
HIMMELVALLEY HOLSTN	82 HO	26249	1074	817
NATHAN MULLEN	102 HO	25477	977	817
OBIEVIEW, C & M	112 HO	25964	1065	815
FERTILE VALLEY FARM	117 HO	26478	1007	812
DETWEILER HOLSTEINS	80 HO	25590	978	801
RUPLAND HOLSTEINS	84 HO	25894	962	794
RUPLAND HOLSTEINS	263 HO	25699	994	785
HELLINGER FARMS LLC.	154 XX	23783	935	784
RUPLAND HOLSTEINS	179 HO	25603	1009	781
AMOS Z. ESCH	41 HO	25387	976	780
B. & L. HOSTETTER	87 HO	24866	975	778
MUSSER RIDGE FARM	181 HO	24207	992	772
HOMESTEAD ACRES	121 HO	24611	908	765
HIDE AWAY DAIRY, INC.	407 HO	24932	992	760
MDR FARMS	134 HO	24052	922	752
JUSTIN & LESLIE VARNICLE	53 HO	23620	928	752
LOCUST ST. HOLSTEINS	140 HO	24554	883	738
K. & M. SELLERS	63 HO	23396	934	735
ALAN HOSTETTER	75 HO	23431	878	735
JOHN & ALISHA RISSER	82 HO	22605	933	730
BAER BROTHER FARMS	133 HO	21297	838	719
LAMAR BOLLINGER	79 HO	19928	872	708
LYNN & SHEILA SCHWENK	132 HO	21869	817	702
HELLINGER FARMS LLC.	77 BS	20378	804	698
NATHAN MULLEN	18 JE	16968	894	646
DIAMOND VALLEY DAIRY	67 XX	19035	855	644
J. CALVIN ZIMMERMAN	92 HO	18758	765	590
J. CALVIN ZIMMERMAN	119 HO	18581	758	586
KLINEDELL FARM	179 HO	18721	751	578
J. CALVIN ZIMMERMAN	28 HO	17974	737	571
KLINEDELL FARM	225 HO	17654	729	556

HERDS WITH A RHA SCC LESS THAN 200,000

B. & L. HOSTETTER	HO	61	87
HIMMELVALLEY HOLSTN	HO	61	82
RUPLAND HOLSTEINS	HO	83	179
RUPLAND HOLSTEINS	HO	88	263
BRANDT VIEW FARM	HO	92	110
WHITE BIRCH FARM	HO	92	155
RUPLAND HOLSTEINS	HO	98	84
BRUCE BOLLINGER & FAMILY	HO	103	98
KEVIN & ALLISON SELLERS	HO	108	59
DEW MIST HOLSTEINS	HO	118	229
MUSSER RIDGE FARM	HO	120	181
QUENTIN HORST	HO	124	148
LYNN & SHEILA SCHWENK	HO	125	132

DETWEILER HOLSTEINS	HO	125	80
DIAMOND VALLEY DAIRY LLC.	XX	130	67
OBIEVIEW, C. & M.	HO	131	112
LYNNCREST HOLSTEINS	HO	132	52
OBIEVIEW HOLSTEINS	HO	133	110
HELLINGER FARMS LLC.	HO	136	78
HELLINGER FARMS LLC.	XX	137	154
HELLINGER FARMS LLC.	BS	138	77
FERTILE VALLEY FARM	HO	139	117
K. & M. SELLERS	HO	141	63
MARK M. HOOVER	HO	142	98
DNR HOLSTEINS	HO	143	114
DARREN WISE	HO	144	137
PROMISE LANE FARMS	HO	150	104
DREAMLEA HOLSTEINS	HO	157	95
AMOS Z. ESCH	HO	159	41
GARY LENTZ	HO	178	117
JUSTIN & LESLIE VARNICLE	HO	179	53
KLINEDELL FARM	JE	181	46
CARISTONE FARM LLC.	HO	191	252
BROOK CORNER HOLSTEINS	HO	196	402

Lycoming County

SCARLET SUMMER HOLSTEIN	118 HO	23370	951	771
AARON S. LAPP	50 HO	23829	993	749
SAMUEL S. LAPP	49 HO	24754	1012	746
ROCKY HILL FARM	15 GU	22947	921	737
SCOTT RHONDA LOVELL	42 HO	22625	895	720
ELAM F. LAPP	45 HO	23022	934	710
JOHN K. LAPP, JR.	52 HO	21951	884	697
GLADE RUN FARMS LLC.	81 HO	19685	794	649
AARON K., JR. & LYDIA LAPP	52 HO	19932	824	603

HERDS WITH A RHA SCC LESS THAN 200,000

SAMUEL S. LAPP	HO	72	49
ELAM F. LAPP	HO	88	45
JOHN K. LAPP, JR.	HO	111	52
ROCKY HILL FARM	GU	127	15
AARON K., JR. & LYDIA LAPP	HO	171	52
GLADE RUN FARMS LLC.	HO	180	81

McKean County

DETRICKS FARM	36 HO	20764	877	680
---------------	-------	-------	-----	-----

Mercer County

DALE L. KEPNER	122 HO	28712	1047	878
CLAN CAMPBELL	52 HO	26564	1051	875
GANDER & GIRLS FAMILY	46 HO	25441	1016	788
WILLOW BROOK FARM	24 HO	21215	807	676
IRISHTOWN ACRES	533 JE	17442	947	649
WILLOW BROOK FARM	50 XX	18398	765	614
WILLOW BROOK FARM	20 XX	16079	710	552

HERDS WITH A RHA SCC LESS THAN 200,000

WILLOW BROOK FARM	XX	121	20
WILLOW BROOK FARM	XX	146	50
IRISHTOWN ACRES	JE	154	533
WILLOW BROOK FARM	HO	158	24

Mifflin County

PEACHCREST HOLSTEINS	132 HO	29834	1194	980
----------------------	--------	-------	------	-----

BLESSED ACRES DAIRY	45 HO	28459	1136	903
TITUS R. PEACHEY	117 HO	28302	1095	892
WOODEDGE FARM LLC.	169 HO	28213	1174	891
KISH VIEW FARM	658 HO	28649	1142	885
ANTHONY & CHANDRA PEAC	67 HO	29475	1131	885
DERRY MUSSER	119 HO	26853	1088	872
BYLER VIEW LLC.	112 HO	25656	1087	850
VERNAN HOLSTEINS	61 HO	27363	1007	840
MIMOSA VIEW FARM	66 HO	26080	1007	824
BLESSED ACRES DAIRY	54 HO	26061	1040	824
LOREN K. YODER	101 HO	25424	1061	815
WILLOWS FARM	95 HO	24643	1164	807
CHASE & ALLISON PEACHEY	123 HO	25780	866	802
FORGY DAIRY	191 HO	25008	964	796
SHAWN & EMILY YODER	107 HO	25166	968	794
ROBERT & LISA PEACHEY	85 HO	25519	933	789
JASON & LORI KAUFFMAN	98 HO	25410	1007	788
FROG MEADOW FARM	81 HO	24816	960	784
NATHAN & EUNICE YODER	74 HO	23980	1027	770
LAVERN M. KING	87 HO	24078	920	751
JOHN SPICHER	95 HO	22245	917	729
JOE & KRISTIN DIEHL	244 JE	18814	948	712
JONAS & LYNETTE KING	69 HO	21342	849	637
JOSH RENNINGER	47 HO	20381	844	608
CALVIN & ELVA YODER	88 HO	19821	782	605
SPARROW EYE GRAZERS	40 XX	15256	631	506

HERDS WITH A RHA SCC LESS THAN 200,000

BLESSED ACRES DAIRY	HO	52	54
BLESSED ACRES DAIRY	HO	52	45
CALVIN & ELVA YODER	HO	70	88
WILLOWS FARM	HO	76	95
PEACHCREST HOLSTEINS	HO	83	132
JOHN SPICHER	HO	103	95
NATHAN & EUNICE YODER	HO	106	74
DERRY MUSSER	HO	107	119
AUDREY GAY RODGERS	AY	117	40
VERNAN HOLSTEINS	HO	123	61
ROBERT & LISA PEACHEY	HO	130	85
BYLER VIEW LLC.	HO	133	112
MIMOSA VIEW FARM	HO	135	66
WOODEDGE FARM LLC.	HO	140	169
SPARROW EYE GRAZERS	XX	146	40
TITUS R. PEACHEY	HO	150	117
JASON & LORI KAUFFMAN	HO	166	98
FROG MEADOW FARM	HO	169	81
JOE & KRISTIN DIEHL	JE	178	244
FORGY DAIRY	HO	186	191
KISH VIEW FARM	HO	193	658
LOREN K. YODER	HO	194	101

Montgomery County

MERRYMEAD FARM	62 HO	33301	1260	1024
----------------	-------	-------	------	------

HERDS WITH A RHA SCC LESS THAN 200,000

MERRYMEAD FARM	HO	27	62
----------------	----	----	----

Northampton County

KLEIN FARMS	81 HO	25949	1061	799
JOAN A. WILLIAMS	123 HO	24643	1046	738
RALPH HAHN	99 HO	22418	984	687
JOHN BOCKO	37 HO	17740	730	543
KOEHLER FARM	39 HO	17769	687	522

BIG Fly Problem?

starbar Fly Control Products

Available Today!



800-845-3374
FarmerBoyAg.com





Dairy One

For Records Processed Through DRMS Raleigh
800-344-2697 • www.dairyone.com

HERDS WITH A RHA SCC LESS THAN 200,000

KLEIN FARMS	HO	85	81
KOEHLER FARM	HO	131	39

Northumberland County

ZIMMERMAN'S HILLTOP DAIRY	327 HO	29043	1208	950
SPRING LAKE DAIRY	107 HO	28229	1171	933
SHULTZ HILLSIDE DAIRY	84 HO	28625	1114	884
SHULTZ HILLSIDE DAIRY	89 HO	28349	1104	876
FAUS FARMS	129 HO	26338	1081	818
WAYNE KLOCK	43 HO	24467	955	758
PAUL SCHMIDT	177 HO	23341	949	721
KEVIN BROUSIOUS	46 HO	16191	656	500

HERDS WITH A RHA SCC LESS THAN 200,000

SPRING LAKE DAIRY	HO	103	107
FAUS FARMS	HO	110	129
ZIMMERMAN'S HILLTOP DAIRY	HO	163	327
SHULTZ HILLSIDE DAIRY	HO	185	84
SHULTZ HILLSIDE DAIRY	HO	189	89

Perry County

M. W. SMITH FARMS	789 HO	28698	1243	910
LOGAN M. BOWEN	617 HO	28869	1188	899
LOY ACRES LLC.	101 HO	31039	1155	895
MELVIN S. WEAVER	104 HO	27237	1142	855
CARL & BRENT MCMILL	94 HO	27571	1070	849
MERLE NOLT	47 HO	27277	1022	828
LENARD & AMY KRESGE	149 HO	25862	1043	826
BLAINVIEW FARM LLC.	121 HO	25385	990	790
LYONS BROTHERS	67 HO	26214	1001	790
INNERST FARM	310 HO	24529	1080	763

HERDS WITH A RHA SCC LESS THAN 200,000

MERLE NOLT	HO	74	47
MELVIN S. WEAVER	HO	96	104
LOY ACRES LLC.	HO	103	101
M. W. SMITH FARMS	HO	123	789
BLAINVIEW FARM LLC.	HO	138	121
CARL & BRENT MCMILLEN	HO	142	94
LENARD & AMY KRESGE	HO	164	149
INNERST FARM	HO	185	310

Potter County

CADY FARMS	88 HO	23281	1011	758
EUGENE SUPPLEE	117 HO	19579	807	635

Schuylkill County

BRIAN RUCH	57 HO	27932	1141	909
AMOS STOLTZFUS	54 HO	27222	1084	847
RYAN WOLFE	57 HO	25930	986	823
WIND MILL FARM	220 BS	21586	967	740
WIND MILL FARM	213 BS	21532	965	738
DUNN'S PRIDE HOLSTEINS	106 HO	23996	943	734
SNYDERLAND FARMS	41 HO	20883	913	672
JERSEY ACRES FMS., INC.	226 JE	16389	801	635
BRIAN & BROOKE HEISL	98 JE	14614	721	551

HERDS WITH A RHA SCC LESS THAN 200,000

SNYDERLANDFARMS	HO	124	41
DUNN'S PRIDE HOLSTEINS	HO	134	106
BRIAN RUCH	HO	135	57
RYAN WOLFE	HO	148	57
JERSEY ACRES FMS., INC.	JE	168	226
AMOS STOLTZFUS	HO	172	54
WIND MILL FARM	BS	194	220
WIND MILL FARM	BS	196	213

Snyder County

DARE E LAND	72 HO	28253	1324	985
DARE E LAND	114 XX	25246	1252	917
ROCKINHILL DAIRY	68 HO	28446	1109	908
MABARBIL FARMS	96 HO	25801	1046	826
WARREN FAUS	65 HO	25671	1034	812
DARE E LAND	42 JE	20152	1130	802
JACOB GRAYBILL	53 XX	24305	972	778
ROBERT & KATHY WAITE	67 XX	23490	979	774
BO ANN HOLSTEINS	53 HO	23524	972	728
BO ANN HOLSTEINS	60 HO	22574	950	711

WAITE N CE FARM	75 HO	20792	831	673
HOLLENBACH FARMS LLC.	51 HO	19670	852	641

HERDS WITH A RHA SCC LESS THAN 200,000

MABARBIL FARMS	HO	125	96
WARREN FAUS	HO	125	65
ROCKINHILL DAIRY	HO	141	68
ROBERT & KATHY WAITE	XX	168	67

Somerset County

PENNWOOD FARMS	536 HO	27070	1018	818
PENNWOOD FARMS	696 HO	25368	995	788
PENNWOOD FARMS	159 JE	18955	903	670
LAVERN BENDER	59 XX	13778	665	503

HERDS WITH A RHA SCC LESS THAN 200,000

PENNWOOD FARMS	JE	131	159
----------------	----	-----	-----

Sullivan County

SCOTT & RANDY REIBSON	91 XX	20503	890	691
CRAIG BAGLEY	40 XX	19328	811	648

HERDS WITH A RHA SCC LESS THAN 200,000

SCOTT & RANDY REIBSON	XX	160	91
-----------------------	----	-----	----

Susquehanna County

BRANTSTEAD DAIRY FARM	90 HO	28424	1162	896
EMPET FARMS	128 HO	29177	1139	894
WILLIAM JONES & SONS	305 HO	27234	1193	869
EMPET FARMS	162 HO	27241	1106	856
LOYD & DENISE PEASE	68 HO	24614	975	797
ETW DAIRY, INC.	51 HO	25854	1020	786
COTTRELL DAIRY	55 HO	24072	852	763
JOHN CASTROGIOVANNI	97 HO	24388	958	748
EMPET FARMS	35 JE	20083	987	717
CHARLIE & KIM CLARK	29 XX	20873	719	671
COLD CREEK FARM	238 HO	21506	774	658
BILL HEWITT	71 HO	20676	730	627
AJOY SWISS	54 BS	18598	766	614
JOHN W. BROOKS	70 XX	18210	725	570

HERDS WITH A RHA SCC LESS THAN 200,000

JOHN W. BROOKS	XX	71	70
WILLIAM JONES & SONS	HO	80	305
EMPET FARMS	HO	89	128
EMPET FARMS	HO	90	162
ETW DAIRY, INC.	HO	98	51
EMPET FARMS	JE	100	35
AJOY SWISS	BS	102	54
COTTRELL DAIRY	HO	161	55
JOHN CASTROGIOVANNI	HO	173	97
BRANTSTEAD DAIRY FARM LLC.	HO	185	90

HERDS WITH A RHA SCC LESS THAN 200,000

JOHN W. BROOKS	XX	71	70
WILLIAM JONES & SONS	HO	80	305
EMPET FARMS	HO	89	128
EMPET FARMS	HO	90	162
ETW DAIRY, INC.	HO	98	51
EMPET FARMS	JE	100	35
AJOY SWISS	BS	102	54
COTTRELL DAIRY	HO	161	55
JOHN CASTROGIOVANNI	HO	173	97
BRANTSTEAD DAIRY FARM LLC.	HO	185	90

Tioga County

SHERMAN, HENRY & KELLY	122 HO	21801	928	701
------------------------	--------	-------	-----	-----

HERDS WITH A RHA SCC LESS THAN 200,000

SHERMAN, HENRY & KELLY	HO	82	122
------------------------	----	----	-----

Union County

DERICK MARTIN	60 HO	29857	1095	927
FLOYD MARTIN	59 HO	28510	1082	899
JAY & AREMINA CHARLTON	81 HO	27813	1106	861
HEART & SOUL	38 HO	25804	1054	848
SNODDY FARM, INC.	93 HO	23397	955	734
SPRUCE RUN FARM	94 HO	23288	930	698
JOHN ZIMMERMAN	104 HO	20487	818	667

HERDS WITH A RHA SCC LESS THAN 200,000

DERICK MARTIN	HO	117	60
SNODDY FARM, INC.	HO	119	93
JAY & AREMINA CHARLTON	HO	148	81
HEART & SOUL	HO	168	38
JOHN ZIMMERMAN	HO	177	104

Warren County

SUNSET DAIRY	591 HO	29647	1245	918
PINE TON FARMS	351 HO	26471	1046	893
MARTHA BEARDSLEY	45 HO	22880	892	730
CURTIS JERSEY	72 JE	15546	734	544

HERDS WITH A RHA SCC LESS THAN 200,000

SUNSET DAIRY	HO	174	591
--------------	----	-----	-----

SUNSET DAIRY	HO	174	591
--------------	----	-----	-----

Wayne County

HIGHLAND FARMS	93 HO	26325	1208	898
JACK & ELLA CHYLE	13 HO	25616	973	817
ROCK RIDGE FARM	61 HO	21361	901	706
TRI NON FARMS	89 HO	22368	788	685
D. ELLIS DIX	46 XX	20580	791	673
CHYLE LAND DAIRY	68 JE	18600	880	666
STEEPHILL DAIRY LLC.	79 HO	16238	655	525
NOAH WOROBEY	40 HO	16904	709	517

HERDS WITH A RHA SCC LESS THAN 200,000

HIGHLAND FARMS	HO	66	93
D ELLIS DIX	XX	104	46
JACK & ELLA CHYLE	HO	120	13
CHYLE LAND DAIRY	JE	134	68
NOAH WOROBEY	HO	135	40
TRI NON FARMS	HO	191	89

Westmoreland County

SLICKHILL HOLSTEINS	75 HO	22288	879	716
EBERT FAMILY FARM	51 HO	20244	845	676
ADAM VANCE	68 HO	16399	616	518

HERDS WITH A RHA SCC LESS THAN 200,000

JOE & KATHLEEN KERBER	GU	152	20
-----------------------	----	-----	----

Wyoming County

BALEWSKI DAIRY	38 HO	22692	965	735
GOODWIN FARMS	75 HO	17692	764	579
ROBERT WILSON	48 HO	18649	697	548

HERDS WITH A RHA SCC LESS THAN 200,000

ROBERT WILSON	HO	143	48
BALEWSKI DAIRY	HO	197	38

York County

WALK LE HOLSTEINS	323 HO	29986	1260	976
TAYACRES FARM	195 HO	28629	1266	899
MEADOW VALLEY DAIRY	181 HO	26275	1194	835
BAUMGARDNER FARMS LLC.	210 HO	24580	1028	780
GUM TREE FARM	56 HO	23566	1025	712
BARRENS VIEW FARM	78 XX	22095	939	706
DALE & DARLA DOLL	91 HO	20542	833	640

HERDS WITH A RHA SCC LESS THAN 200,000

BAUMGARDNER FARMS LLC.	HO	128	210
BARRENS VIEW FARM	XX	138	78
TAYACRES FARM	HO	196	195

DELAWARE

New Castle County

UNIVERSITY OF DELAWARE	70 HO	27571	1174	876
VARI, V. JOSEPH	143 HO	24147	966	774
EMERSON, ROBERT L.	194 HO	23211	1006	752
EMERSON, ROBERT L.	222 HO	22449	984	735
EMERSON, ROBERT L.	28 XX	17156	833	617

HERDS WITH A RHA SCC LESS THAN 200,000

VARI, V. JOSEPH	HO	150	143
UNIVERSITY OF DELAWARE	HO	187	70

Kent County

JENAMY FARMS	266 HO	25074	1069	810
GREGG & STEPHANIE KNUTES	37 HO	23665	929	770
GREGG & STEPHANIE KNUTES	55 XX	21898	897	736
GREGG & STEPHANIE KNUTES	18 JE	18118	829	665

HERDS WITH A RHA SCC LESS THAN 200,000

GREGG & STEPHANIE KNUTSEN	HO	147	37
GREGG & STEPHANIE KNUTSEN	XX	180	55

Sussex County

JOHN A. MILLS	157 JE	19212	1006	691
---------------	--------	-------	------	-----



For Records Processed Through DRMS Raleigh
800-344-2697 • www.dairyone.com

UNIVERSITY OF MARYLAND	91 HO	25748	1084	802
DAVID & JAMES PATRICK	31 AY	16701	688	557
HERDS WITH A RHA SCC LESS THAN 200,000				
DAVID & JAMES PATRICK	AY	89	31	
DAVID & JAMES PATRICK	HO	110	127	

Queen Anne's County

LESTER C. JONES, INC.	1647 HO	28993	1355	917
KEVIN LEAVERTON	90 HO	22991	983	764
WINTERSTEIN FARMS LLC.	149 XX	22297	1028	744
HERDS WITH A RHA SCC LESS THAN 200,000				
LESTER C. JONES, INC.	HO	119	1647	

Talbot County

HENRY SNOW III.	22 HO	22992	884	726
-----------------	-------	-------	-----	-----

Washington County

RALPH W. SHANK	18 HO	26522	970	813
BRIAN FORSYTHE	19 HO	24169	977	781
DEBAUGH FARMS	132 HO	24374	940	777
DEBAUGH FARMS	142 HO	23908	975	769
CLETUS & JANICE FREY	130 XX	23658	978	764
RALPH W. SHANK	124 XX	21429	894	693
RALPH W. SHANK	75 AY	22098	897	692
COOL BROOK FARM	118 XX	21619	880	687
PRYOR BROTHERS	99 XX	22362	874	684
BRENT HORST	135 HO	21627	991	684
BRIAN FORSYTHE	63 XX	18748	852	677
DEBAUGH FARMS	10 JE	17873	862	665
BRIAN FORSYTHE	45 JE	16474	799	634
RALPH W. SHANK	24 JE	16326	830	610
LONG DELITE FARM	62 XX	17326	739	574
HERDS WITH A RHA SCC LESS THAN 200,000				
BRIAN FORSYTHE	HO	88	19	
BRIAN FORSYTHE	XX	108	63	
BRIAN FORSYTHE	JE	121	45	
DEBAUGH FARMS	HO	122	132	
DEBAUGH FARMS	HO	124	142	
DEBAUGH FARMS	JE	145	10	
LONG DELITE FARM	XX	168	62	
RALPH W. SHANK	AY	176	75	
RALPH W. SHANK	HO	181	18	
RALPH W. SHANK	XX	189	124	

MAINE

Androscoggin-Sagadahoc

BRIGEEEN FARMS	566 HO	31981	1331	1038
HERDS WITH A RHA SCC LESS THAN 200,000				
BRIGEEEN FARMS	HO	84	566	

MASSACHUSETTS

Hampshire County

COOK FARM	79 HO	24290	1110	828
HERDS WITH A RHA SCC LESS THAN 200,000				
COOK FARM	XX	142	79	

NEW YORK

Cayuga County

AURORA RIDGE DAIRY	2660 HO	30609	1227	954
HERDS WITH A RHA SCC LESS THAN 200,000				
AURORA RIDGE DAIRY	HO	117	2660	

Chenango County

MARSHMAN FARMS	422 HO	28157	1208	882
EVANS HOLSTEINS	91 HO	20431	744	608
HERDS WITH A RHA SCC LESS THAN 200,000				
MARSHMAN FARMS	HO	111	422	

Cortland County

MCEVOY, CHARLES & KENNET	33 HO	17344	704	545
HERDS WITH A RHA SCC LESS THAN 200,000				
MCEVOY, CHARLES & KENNETH	HO	113	33	

Genesee County

OAKFIELD CORNERS DAIRY	2595 HO	31924	1394	1045
OAKFIELD CORNERS DAIRY 2	3332 HO	32275	1370	1071
HERDS WITH A RHA SCC LESS THAN 200,000				
OAKFIELD CORNERS DAIRY	HO	97	2595	
OAKFIELD CORNERS DAIRY 2	HO	130	3332	

Niagara County

LAKESHORE DAIRY LLC.	2078 HO	30181	1303	965
HERDS WITH A RHA SCC LESS THAN 200,000				
LAKESHORE DAIRY LLC.	HO	196	2078	

Oneida County

WORMONT DAIRY	274 HO	18331	844	615
---------------	--------	-------	-----	-----

Saratoga County

WELCOME STOCK FARM	977 HO	27320	1277	916
--------------------	--------	-------	------	-----

Washington County

LIDDLEHOLME	78 HO	18518	748	581
HERDS WITH A RHA SCC LESS THAN 200,000				
LIDDLEHOLME	HO	177	78	

Wyoming County

WOODVALE FARMS	852 HO	28349	1168	927
HERDS WITH A RHA SCC LESS THAN 200,000				
WOODVALE FARMS	HO	74	852	

OHIO

Holmes County

ROD HUNSBERGER	183 HO	31678	1157	980
DEAN WOLBOLDT	85 HO	21824	911	705
DEAN WOLBOLDT	117 HO	20746	893	685
LOREN LANG	214 HO	20988	836	676
DEAN WOLBOLDT	19 XX	16853	787	594
HERDS WITH A RHA SCC LESS THAN 200,000				
ROD HUNSBERGER	HO	100	183	
DEAN WOLBOLDT	HO	117	85	
DEAN WOLBOLDT	HO	167	117	

Lorain County

JALODA FARMS	131 HO	25352	1078	842
--------------	--------	-------	------	-----

Tuscarawas County

JAMES ROWE	190 HO	26742	1131	860
STEAM VALLEY FARMS, INC.	137 HO	25631	975	784
HERDS WITH A RHA SCC LESS THAN 200,000				
STEAM VALLEY FARMS, INC.	HO	165	137	

Wayne County

STERLING HEIGHTS DAIRY	1122 XX	30721	1151	976
------------------------	---------	-------	------	-----

GREGG TROYER	147 HO	26801	1148	924
RUPP-VUE FARM	343 HO	26466	1036	843
TOM & JODI MCDONNE	62 XX	23082	994	797
ZOLLINGER	115 JE	19820	1063	753
RAMSEYER, CHAD	325 JE	17375	938	688
HERDS WITH A RHA SCC LESS THAN 200,000				
ZOLLINGER	JE	83	115	
GREGG TROYER	HO	112	147	
RAMSEYER, CHAD	JE	113	325	
RUPP-VUE FARM	HO	173	343	
RYAN KREIDER	HO	191	137	

WEST VIRGINIA

Mineral County

BROOKEDALE HOLSTEINS	70 HO	17836	725	552
HERDS WITH A RHA SCC LESS THAN 200,000				
BROOKEDALE HOLSTEINS	HO	165	70	

Delaware State DHIA

APRIL 2024

Kent County

JENAMY FARMS	268 HO	4.0	810	89.9
GREGG & STEPHANIE	37 HO	3.7	770	81.6
GREGG & STEPHANIE	54 XX	3.9	736	73.9
GREGG & STEPHANIE	17 JE	4.9	665	55.5

New Castle County

UNIVERSITY OF DELAWARE	69 HO	4.2	876	104.0
VARI, V. JOSEPH	137 HO	4.1	774	85.8
EMERSON, ROBERT L.	192 HO	4.4	752	84.9
EMERSON, ROBERT L.	215 HO	4.4	735	83.3
EMERSON, ROBERT L.	23 XX	4.7	617	68.8

Sussex County

BAILEY, J. E. & SONS	262 HO	4.1	767	86.7
JOHN A. MILLS	154 JE	5.2	691	76.1
JOHN A. MILLS	153 JE	5.2	690	76.1
HEATWOLE, JERREL & A	55 HO	3.9	653	65.7

New Jersey DHIA

APRIL 2024

Central Jersey Area / Hunterdon County

CEDAR LANE FARM LLC.	58 HO	29705	1236	878
CEDAR LANE FARM LLC.	15 JE	18125	1044	678
MIDDLEBUSH FARMS, INC.	72 HO	20846	859	652
WENGRYN, JANET	34 HO	20552	822	634
HERDS WITH A RHA SCC LESS THAN 200,000				
CEDAR LANE FARM LLC.	JE	114	15	
CEDAR LANE FARM LLC.	HO	117	58	
MIDDLEBUSH FARMS, INC.	HO	138	72	
WENGRYN, JANET	HO	157	34	

South Jersey Area

MYERWOOD FARMS	520 HO	29722	1189	930
BEILER, KEVIN	89 HO	25981	1034	817
HERDS WITH A RHA SCC LESS THAN 200,000				
MYERWOOD FARMS	HO	131	520	

Sussex County

LOCKBURNER, MARK F.	50 HO	25611	984	827
KUPERUS MEADOWS	143 HO	23425	985	731
WINDY FLATS DAIRY	88 HO	22901	874	672
SPRING HOUSE DAIRY	65 XX	18378	868	623
DECKERTOWN HOLSTEINS	72 HO	19478	778	618
HERDS WITH A RHA SCC LESS THAN 200,000				
LOCKBURNER, MARK F.	HO	121	50	
SPRING HOUSE DAIRY	XX	167	65	
KUPERUS MEADOWS	HO	199	143	

Warren County

BRETT BALDWIN	56 HO	22970	1023	737
---------------	-------	-------	------	-----

AGRI-TRAC Traction-Milling

- Increase Milk Production
- Increase Heat Detection
- Reduce Hoof & Leg Injuries
- Reduce Cull Rates

Our Gift of Green Spray from www.andrewsagco.com that all vets, farmers, hoof trimmers, and farriers are using for cuts, warts, ringworm and hoof rot.

"I still lost cows when I grooved. Agri-Trac came in and changed that! This is real Traction for my cows! I noticed the difference right away! I liked it so much I had them come back and do the rest of my barns! No more grooving for us! Thanks Agri-Trac!" — **Unc Brock, Schaghticoke, NY**

"AGRI-TRAC Traction Milling lasts and it won't wear! It works! I believe in it! No more slippery floors! No more grooving every few years! AGRI-TRAC lasts far longer than grooving. No more lame or down cows!" — **Jim Akam, Concord Valley Farms, Sparta, VA**

"Agri-Trac works so good after they milled our floors our milk count went up 2lbs per day without changing anything else! You can see the confidence our cows have now when walking and running. No more down cows with grooving! Thank you AGRI-TRAC!" — **Ron Deboover, Vince Deboover Farms, Geneva, NY**

"We had slippery floors and lost cows. Now my cows have real traction! This is a game changer for us. Thanks to Agri-Trac now our cows are happy. This is a game changer!" — **Matthew Rohrer, Rockingham, VA**

"Right after my barn floors were milled we had real Traction for the first time since we started milking cows. I realized a 5lb per cow increase right off. My cows are completely different. I will never groove again! Thank you AGRI-TRAC!" — **Derrick Nop, Montgomery, NY**

"AGRI-TRAC Traction Milling works 100%! I have grooving and it does not work! AGRI-TRAC milled right over my grooving and fixed it! I will stick to AGRI-TRAC in the future!" — **Robert Musser, Shippensburg, PA**

Planting and Hay Baling Season Best Discounts of the Year!

Agritraction.com • 717-682-8557 or 877-966-3546

Don't Let Summer Heat Stress Out Your Milk Check!

LIRA GOLD[®] HydroLyte COW[™]

LIRA GOLD[®] HydroLyte COW[™] is specifically formulated to provide electrolytes and key nutrients during times of environmental stress, like higher temperatures.

Add HydroLyte COW and LIRA GOLD supplements into your summer heat management program!

Earn a 5% savings when you purchase HydroLyte COW!

Contact your LIRA GOLD representative for more details!

Offer Ends September 27, 2024

Call or Click Today • 800-992-3147 • LIRAGOLD.com

LIRA GOLD
NUTRITIONAL SOLUTIONS FOR HEALTH & PRODUCTIVITY

Distributed in Central PA/MD by: Paul Miller & Sons • 717-469-7195 | Distributed in Eastern PA/MD by: Hostetter Healthcare, LLC • Dick Hostetter • 484-437-8973

CDE DAIRY MARKETS & MANAGEMENT UPDATE

All prices — MAY 8, 2024 — except where noted

Dairy exports continue to slip: Dairy exports continued their downward trend from 2023 in the first quarter of 2024. Total dairy exports declined year over year in March, with total dairy export volumes dropping 4.5 percent to 527 million pounds, while the value of those exports fell 9.2 percent to \$740 million. The year-over-year decline in March came on the heels of February's jump in total dairy export volume and values. Year to date, dairy export volumes are down 3.1 percent from 2023, while export values were down 10 percent in the first quarter.

Cheese sales overseas continue to be strong and remain a bright spot in the dairy export market. March cheese exports were up 21 percent to 50,022 metric tons, marking the first time cheese volumes have ever reached 50,000 metric tons in a single month. Much of the growth in sales is coming from Mexico, with year-over-year shipments to our southern neighbor up 8 percent in March. This past month is the 33rd consecutive month of growth in cheese exports into Mexico. Shipments of US cheese to Japan, South Korea, the Middle East and North Africa, and Latin America were also strong in the month of March. With lower domestic cheese prices very competitive on the world market, March is the fifth consecutive month of year-over-year gains in total cheese sales overseas.

Nonfat dry milk and skim milk powder shipments overseas continue to slip, with March NFD and SMP shipments falling 18 percent from a year ago. Powder exports into the Southeast Asia market were up 13 percent, while powder shipments into Mexico were down 37 percent. US Dairy Export Council is pointing to several factors contributing to the decline in overseas sales of NFD and SMP sales, including a decrease in domestic production and stocks of Nonfat Dry Milk Powder. According to the latest USDA Dairy Products report, nonfat dry milk powder production was down 7.9 percent or about 12 million pounds in March.

The latest Dairy Products report shows total cheese output in March

Prices change daily. This market information is an example for educational purposes. The market data below are compiled weekly by Farmshine, via CME & USDA reports.

up 0.1 percent from a year ago to 1.23 billion pounds, up 7.6 percent from February. Italian type cheese production was up 4.4 percent from last year to 518 million pounds, while American type cheese production was down 2.9 percent to 491 million pounds. Butter production was up 1.4 percent from a year ago to 209 million pounds. Despite the increase in butter production, combined production of skim milk powder and nonfat dry milk powder was down 14.5 percent from a year ago to 212.02 million pounds.

With cheese production basically flat from a year ago, both spot butter and spot cheese prices are up from a month ago. Butter prices hit \$3.02 per pound on May 7, up 10 cents from a month ago. Cheese prices have increased more significantly, with spot Cheddar block prices at \$1.8375 per pound, as of May 7, up nearly 40 cents from a month ago. Class III prices have also rebounded with the higher cheese prices.

USDA announced the April Class III price at \$15.50 per cwt., down 84 cents from March and \$3.02 behind year-ago levels. The April Class IV price was announced at \$20.11, up 2 cents from March and \$2.16 above last April. Class III milk futures, however, are up nearly \$3 from April, with May's Class III price currently trading at \$18.33 per cwt. The average Class III futures price for the remainder of 2024 is \$19.00 per cwt. Class IV has held steady, with the 2024 average Class IV futures prices at \$21.07 per cwt., as of the close of May 7 trading.

USDA announced last week that product testing has not detected any active Highly Pathogenic Avian Influenza (HPAI) virus in hundreds of samples of milk, cottage cheese, and sur cream. The Department also announced that it tested retail ground beef samples and found no active virus in those samples as well.

This continues to affirm that there is no concern about the safety of the milk or meat supply related to the HPAI outbreak in dairy cattle. However, it continues to be an animal health concern.

JAYNE SEBRIGHT
Executive Director, CDE
717.346.0849
jsebright@centerfordairyexcellence.org



Markets

Livestock Auction

May 7, 2024

Alfalfa	3.25
Mixed hay	3.25-4.25
Orchard	8.00
Grass	3.00-7.25
Straw	5.25

Morrison's Cove Auction

May 6, 2024

Alfalfa & grass	130-150
Grass	145
Round bales	105
Large square bales	100

Wolgemuth Auction

May 6, 2024

Alfalfa	45-335
Mixed hay	45-420
Timothy	205-245
Grass	160-330
Straw	165-280
Orchard	140-280
Corn fodder	125-135

Dewart Auction

Dewart, Pa. May 6, 2024

Cattle: 185	
Slaughter cattle:	
Steers:	
Choice	170-181
Select	144-168
Holstein steers:	
Select	132-143
Heifers:	
Select	134
Slaughter cows:	
PrmWht 65-75% lean	124-136
Breakers 75-80% lean	118-126
Boners 80-85% lean	109-117
Lean 85-90% lean	93-109
Slaughter bulls	130-135
Feeder cattle:	
Holstein steers:	
L-3	115-167
Heifers:	
M/L-1-2	150-250
Bulls:	
M/L-1-2	200-245
Calves: 305	
Feeder calves:	
#1 Hol bulls	550-780
#2 Hol bulls	475-590
#3 Hol bulls	200-400
Utility bulls	30-70
Hol heifers	375-600

Greencastle Livestock

Greencastle, Pa. May 6, 2024

Cattle: 546	
Slaughter cattle:	
Steers:	
HiCho & Prm	188-191
Choice	182-187
Select	165-181
Holstein steers:	
HiCho & Prm	159-165
Choice	153-155
Select	145-148
Heifers:	
HiCho & Prm	185-186
Choice	180-184
Select	165-179
Slaughter cows:	
Breakers 75-80% lean	120-128
Boners 80-85% lean	105-119
Lean 85-90% lean	71-104
Slaughter bulls	142.50-170
Feeder cattle:	
Steers:	
M/L-1	220-295
M/L-2	210
Holstein steers:	
L-3	122.50-195
Heifers:	
M/L-2	172.50-287.50
Bulls:	
M/L-1	195-315
Calves: 324	
Feeder calves:	
#1 Hol bulls	590-720
#2 Hol bulls	480-590
#3 Hol bulls	310-420
Utility bulls	70-180
#1 Hol heifers	460-550
#2 Hol heifers	300-360

New Holland Auction

New Holland, Pa. May 6, 2024

Cattle: 1137	
Slaughter cattle:	
Steers:	
HiCho & Prm	184-202.50
Choice	171-190
Select	165-180
Heifers:	
Choice	175-181
Select	170-172
Slaughter cows:	
Breakers 75-80% lean	128-144
Boners 80-85% lean	110-124
Lean 85-90% lean	99-106
Slaughter dairy cows:	
Breakers 75-80% lean	120-149
Boners 80-85% lean	95-133
Lean 85-90% lean	77-118
Bulls:	
1	152-188
1-2	125-153
Calves: 556	
Feeder calves:	
#1 Hol bulls	475-1010
#2 Hol bulls	485-700
#3 Hol bulls	350-450
Utility bulls	50-575
#1 Hol heifers	250-575
#2 Hol heifers	200-425
#3 Hol heifers	75

Hosking Sales

New Berlin, N.Y. May 6, 2024

Cattle:	
Dairy cows	.94
Bone utility	90-1.15
Canners & cutters	.85-.95
Easy cows	.70 & down
Organic bulls/steers	1.27-1.39
Bulls over 1100#	.97-1.42
Feeder:	
Dairy	.31-1.55
Bulls	.40-1.72
Heifers	.70-1.50
Steers	1.00-1.72
Calves:	
Bull	top 6.05
Heifer	top 4.60

Wyalusing Livestock

Wyalusing, Pa. May 6, 2024

Holstein calves:	
70-89 lbs.	3.50-5.50
90-110 lbs.	3.00-5.40
Feeder cattle:	
200-300 lbs.	.80-3.30
301-500 lbs.	1.10-1.60

Livestock Auction

Hackettstown, N.J. May 7, 2024

Calves	1.00-6.00
--------	-----------

CME DAILY FUTURES & OPTIONS TRADING — MAY 8, 2024 AT THE CLOSE

	MAY-24	JUN-24	JUL-24	AUG-24	SEP-24	OCT-24	NOV-24	DEC-24	JAN-25	FEB-25	MAR-25	APR-25	TREND											
CLASS III MILK FUTURES (\$/CWT) vs. wk ago: May24 up \$0.20; June up \$1.75; Jul-Nov24 up \$0.50-\$1.00; Dec24-Apr25 up \$0.10-0.30													12-Month Avg. 19.04↑↑											
18.57	20.18	19.97	19.78	19.75	19.52	19.15	18.60	18.30	18.20	18.23	18.24	18.24	↑↑											
CLASS IV MILK FUTURES (\$/CWT) vs. wk ago: Fully \$0.15 to \$0.40 higher, mostly \$0.20-0.30 higher across the board.													12-Month Avg. 20.86↑↑											
20.29	20.68	20.84	21.09	21.29	21.54	21.75	21.28	20.73	20.58	20.40	19.95	19.95	↑↑											
MILK BASIS (MAILBOX minus CLASS 3 \$/CWT) 2018-23 AVG FOR NORTHEAST & MIDEAST STATES OF PA, NY, NEW ENGL., OH vs. NAT'L AVERAGE - YOUR INDIVIDUAL BASIS WILL VARY																								
Mailbox	18.52	18.15	18.68	18.38	18.65	18.35	18.62	18.41	19.27	18.75	20.20	19.76	20.58	20.17	20.25	19.64	19.22	18.75	18.82	18.25	18.96	18.48	18.64	18.27
Class III	17.33	17.33	18.16	18.16	18.16	18.16	17.59	17.59	17.60	17.60	18.72	18.72	19.07	19.07	17.30	17.30	16.81	16.81	16.03	16.03	16.98	16.98	17.31	17.31
BASIS	1.19	0.82	0.52	0.22	0.49	0.19	1.03	0.82	1.67	1.15	1.48	1.04	1.51	1.10	2.95	2.34	2.41	1.94	2.79	2.22	1.98	1.50	1.33	0.96

	MAY-24	JUL-24	SEP-24	DEC-24	MAR-25	MAY-25	JUL-25	SEP-25	DEC-25	MAR-26	MAY-26	JUL-26	TREND
CORN FUTURES (\$/BU)	4.454	4.584	4.684	4.812	4.940	5.022	5.086	4.900	4.926	5.032	5.100	5.146	↑↑
WEEK AGO	4.432	4.506	4.590	4.726	4.864	4.950	5.012	4.826	4.864	4.960	5.014	5.050	
SOYMEAL FUTURES (\$/TON)	374.8	378.5	375.7	374.3	373.2	375.7	376.2	374.5	374.4	375.4	374.5	372.7	↑↑
WEEK AGO	342.6	349.0	349.8	349.8	350.2	353.6	354.6	354.0	354.5	356.3	356.0	354.7	

U.S. AVG PREMIUM ALFALFA & ALFALFA/GRASS HAY 20-22% CP - Source: USDA Monthly National Dairy Comprehensive Report

	JAN-23	FEB-23	MAR-23	APR-23	MAY-23	JUN-23	JUL-23	AUG-23	SEP-23	OCT-23	NOV-23	DEC-23	JAN-24	FEB-24	MAR-24	*APR-24
266.60	297.25	277.00	290.00	292.86	244.27	254.92	243.50	238.50	217.82	240.41	231.70	254.85	224.50	205.02	*220.17	↑↑

DMC OFFICIAL GROSS MARGINS per cwt(USDA All-Milk, com, alfalfa & Ill. soybean, feed for ALL CLASSES of dairy cattle on farm) Updated with NEW prem. alfalfa feed cost

DMC	NOV-22	DEC-22	JAN-23	FEB-23	MAR-23	APR-23	MAY-23	JUN-23	JUL-23	AUG-23	SEP-23	OCT-23	NOV-23	DEC-23	JAN-24	FEB-24	*MAR-24
10.89	9.76	7.94	6.19	6.08	5.84	4.83	3.65	3.52	6.46	8.44	9.44	9.58	8.44	8.48	9.44	*9.65	↑↑
ALL MILK	25.60	24.70	23.10	21.60	21.10	20.70	19.30	17.90	17.40	19.70	21.00	21.60	21.70	20.60	20.10	20.60	20.70
FEED \$	14.71	14.94	15.16	15.41	15.02	14.86	14.47	14.25	13.88	13.24	12.56	12.16	12.12	12.16	11.62	11.16	11.05

DAIRY COMMODITIES - GLOBAL DAIRY TRADE BIWEEKLY INTERNET AUCTION 05/07/24				U.S. CME CASH MARKET (\$/LB) 05/08/24				**USDA JAN-24 NEW*					
GDT QUOTES AVERAGE OF FORWARD CONTRACTS 1-6 mos. forward, per metric ton				CME QUOTES LAST DAILY SPOT BID, OFFER, SALE				ALL-MILK BF *MAILBOX					
ALL-PRODUCT INDEX	3708	↑↑ 1.8%	BUTTERMILK POWDER	2545	↑↑ 1.7%	GRADE A NFD	0 LDS	1.1300	↑↑	*FL	\$24.60	3.97	\$23.35
WHOLE MILK POWDER (WMP)	3350	↑↑ 2.4%	BUTTER	6593	↑↑ 2.1%	DRY WHEY	0 LDS	0.3825	↑↑	*SE	\$24.40	4.14	\$22.34
SKIM MILK POWDER (SMP)	2551	↑↑ 0.4%	CHEDDAR (BULK)	4257	↑↑ 8.0%	BUTTER	0 LDS	3.0225	↑↑	*APP	\$24.50	4.23	\$21.64
ANHYDROUS MILKFAT (AMF)	7124	↑↑ 1.2%	MOZZARELLA (BULK)	3840	↑↑ 2.3%	CHEDDAR 40 LB BLOCKS	1 LDS	1.9500	↑↑	*LENG	\$22.00	4.37	\$21.19
			LACTOSE	739	↓↓ 1.3%	500 LB BARRELS	0 LDS	1.9000	↑↑	*Pheat	\$21.30	4.24	\$20.57
										*IN	\$21.60	4.23	\$20.46
										*OH	\$21.10	4.21	\$20.44
										*NY	\$21.60	4.32	\$20.24
										*Pawestern PA only	\$20.02		
										*MO	N/A	N/A	\$19.96
										*IL	\$19.90	4.36	\$19.51
										*MI	\$20.40	4.26	\$19.27
										*U.S.	\$20.10	4.35	\$19.14
										*WAOR	\$21.90	4.49	\$18.99
										*CA	\$20.00	4.28	\$18.52
										*TX	\$20.50	4.51	\$18.38
										*NEKS	\$19.40	4.51	\$18.35
										*WI	\$18.00	4.29	\$18.00
										*MN	\$18.80	4.80	\$17.98
		</											

Classifieds

"Say you saw it in FARM SHINE"

1 Services

FARM INSURANCE: barns, equipment, hay and grain storage, Workers' Compensation, farm stands and stores, vehicles and farm homes. N.Y., Pa. and Va. Call Alec Pandaleon at 845-242-0113.

CUSTOM HEIFER RAISING Good quality forage mineral and hay. Room for 50-80. Somerset, PA. 724-953-5931. (7/12)

CUSTOM TUBELINE BALE wrapping. Lancaster Co., Pa. 717-490-4465.

AG PHOTOGRAPHER - senior, family, natural cattle portraits. Sales, herd dispersals and ag event photography coverage and albums. Based in Lancaster, Pa. A Farmgirl's Dream Photography. 717-824-1320.

BALING SERVICES - CUSTOM 3x3 and round baling, along with individual wrapping. Out of southern Lancaster, Pa. 717-826-3775.

REPAIRING ALL KINDS, makes and models farm machinery, specializing in discbines, pull type harvestors and corn planters. Also general welding. We also repair older tractors.

Harsue Repair, New Holland, Pa. 717-355-0715.

BOB & MILLIE'S DISCOUNT signs. The cheapest guys in town. Free delivery on all sign orders. bobthe-signman@yahoo.com. Real Estate-Construction-Banners-Yard Signs-Decals-Magnetic Signs-End of Lane Farm Signs. appletreesigns.com. 410-708-1341.

COMPOSTECH LLC. IS A local Honey Brook business, making and selling organic compost at \$30 per cubic yard. Call Dave at 610-441-5154 to schedule a pick up. Also taking horse manure for free, must be dropped off.

LOWER SCC & IMPROVE conception. Highly effective, 35 years of time tested results and satisfied dairymen nationwide. No withholding ever feed additive, low cost. Call AG, Inc. today. 920-650-1631. www.alphageneticsinc.com

DAIRY PRODUCER - would you like to lower SCC and mastitis rates, provide milking training, breach the language barrier and improve parlor performance? Call Adolph Dossman at 240-286-8996.

INNOVATIVE DAIRY Nutrition - specializing in forage planning to maximize pro-

duction and optimize herd health through advanced nutrition. To improve your profits, contact Matt at 717-729-4530

REDUCED PRODUCTION? Heat stress? High SCC? Scours? Proven effective solutions to your herd's health needs, no withholding. Call the Dairyman's Helper. 800-829-7512.

CUSTOM COLLECTING - Call for prices. 301-491-3154. Triple-Hil Sires.

RELIEF MILKING - farm sitting. Tie stall or parlor. Feeding and young stock care. References available. Adrian Horning 717-466-9099. South-Central, Pa.

KANN'S MILKING SERVICE Franklin & Cumberland Co. 30 years experience, references available. Ryan L. Kann, 717-816-1920.

BARN FULL? WITH 8+ years experience raising heifers, I am the solution to your problem. Space available now. Call today to discuss this opportunity. 717-860-8867.

CUSTOM HEIFER RAISING. Weaned calves to calving. 19 years experience. Modern housing, free stalls, AI breeding, TMR, monthly vet visits. Lebanon Co., Pa. 610-451-3006.

GARDNER CUSTOM HEIFER raising. 40 years experience. TMR in fenceline feeders with lockups, dairy veterinarian manages, ado-

lescent to springers, competitive prices. 540-871-0246, dlggar@aol.com, gardnerheifers.com.

CUSTOM HEIFER RAISING. 300-400 head capacity. AI breeding, hauling available. We do not have state of the art facilities but are committed to an accelerated feeding program. Call for pricing. Reach us at 240-291-0286.

HEIFER RAISING SERVICES offering full health care program, excellent AI breeding program, activity monitor collars, balance ration, pasture for older heifers. Lancaster Co. 717-940-9435.

CUSTOM HEIFER RAISING. Good quality forages. Minerals and hay in TMR. Room for 150-200 head. Troy area. 570-220-4542.

HEIFER BOARDING - Sand bedded freestalls. Corn silage haylage and hay included. \$2/hd/day. 607-382-3633.

HORSE BOARDING available, Willow Street, Pa. area, Lanc. Co. 717-380-7612.

ADAM'S HOOF TRIMMING. 22 years of experience. 717-813-1358.

MID-ATLANTIC HOOF Trimming - providing farmers professional hoof care in Maryland, Virginia, Penn-

sylvania and surrounding states. Call Mikey Barton at 518-567-8046 today for inquiries/scheduling.

HASTINGS HOOF TRIMMING is looking for clients in Pa., N.Y. and Ohio. Call or text 315-283-2717 for a quote.

CATTLE HOOF TRIMMING, Western, Pa. Stand up chute, over 10 years in business. Looking for new clients. 814-279-7932, ask for Russell.

TSHUDY'S HOOF TRIMMING. Quarryville, Pa. Serving Southern Lancaster, Chester and York counties since 2003. \$11/cow, free wraps. Hydraulic tilt table. 717-917-8715.

STAND UP HOOF TRIMMING. Two man trimming

crew, excellent cattle flow. Serving South Central Pa. and surrounding counties. Will travel for large numbers. Call Matt Weaver at 814-793-9966.

HOOF TRIMMING Service. 717-755-0770.

PHILBRICK'S HOOF TRIMMING serving western and central Pennsylvania, western New York and eastern Ohio. 814-720-0010.

HOOF TRIMMING - Garrett Co., Md. Tilt table. Willing to travel distances for large groups/herds. \$10/cow. Trained at Dairyland Hoof Care, Wis. Call 301-616-2195.

MIKE'S HOOF TRIMMING - Since 1988. Hydraulic table. 814-997-9021.

Dealer Inquiries Welcome

We Ship Parts

ALL PLASTIC CONVEYORS AVAILABLE
Good for Under Silo Unloaders Or Any Wet Place, In 18", 24" & 30"
Also Available: Standard Wooden Conveyors And Feeders
In Business Since 1965

717-336-2244
RISSLER CONVEYORS, LLC

Special Dairy Sale

SALE HELD AT FISHER'S QUALITY DAIRY SALES
3304 OLD PHILADELPHIA PIKE, RONKS, PA.

THURSDAY, MAY 23 • 7 P.M.

We will be selling many good, young, fresh cows and heifers from overstocked herds and heifer raisers, including:

- 5 top, young, fresh cows from one farm with 28,000 lb. herd average.

*Plus many more. Watch next week for more details.
Free chocolate milk • Not responsible for accidents*

Sale managed by: **FISHER'S QUALITY DAIRY SALES**
Jonas Fisher • 717-768-3297
Auctioneer - Dave Stoltzfus - AU005655 • Pedigrees - Dan Albright

Built to Last **Saturday, June 8, 2024 • 11AM**
Turner, Maine

110 lots sell... 60 of Brigeen's best and other choice consignments from the Northeast. Big pedigrees, milk cows, and show heifers sell, including daughters and granddaughters of these two EX-93 cows...



Brigeen M SS Gigi 2987-ET, EX-93
3-4 365 41,370 4.0% 1,646 3.3% 1,347



Midas-Touch Hum Joely-ET, EX-93
4-10 365d 51,110 4.1% 2,090 3.2% 1,642

Catalogs by request David Crack • 819.352.1670 | Tim Abbott • 802.238.1142
Sale on Cowbuyer! Brigeen Farms, Inc | 207.713.5145

PENNS VALLEY HORSE AUCTION

SPECIAL CATALOG

MAY 25th 2024

RIDING HORSE AUCTION

ALL HORSES SELL WITH A 1 WEEK SOUNDNESS GUARENTEE

11 AM TACK SALE • 1PM HORSE SALE

Consignments welcomed!



PREVIEW OF ALL SALE HORSES THE DAY BEFORE!

- 6% commission max \$250 - min \$100
- \$50 consignment fee
- Catalog deadline May 10
- All horses must be on auction grounds by May 24
- All horses will be sold with a 1 week soundness guarantee
- All horses must be paid in full the day of the auction. Cash or credit card only, approved checks only

Samuel Stoltzfus auctioneer
AU005760

Visit our Facebook *Penns Valley Horse Sale* for sale previews
2925 Penns Valley Pike Centre Hall Pa 16828
Erica Smith (814) 360-4740 or (814) 364-1796

Free ice cream

NEW HOLLAND SALES STABLES, INC.



Free ice cream

Located 12 Miles East of Lancaster, PA. Just Off Rt. 23, New Holland

DAIRY COW & HEIFER SALE

WEDNESDAY, MAY 15TH • 10:30 A.M.

Mature fresh cows milking over 100 lbs. and with low SCC are wanted.

Quality cows and heifers are selling at historical highs!

Consignors: Please send all info with truckers for the catalog.
For more information, contact dairy reps:
Aaron Martin, 717-445-4825 (home); Bill Hough, 973-224-0204 (cell).

REMINDER: *Thank you - N.H.S.S.*

Friday evening, May 17th, start time 4 p.m.
Special Driving and Draft Horse Sale. Phone your consignments in to 717-354-4341 by Fri., May 17th. Catalog closes at 11:00 a.m.

Sale Managed By
New Holland Sales Stables, Inc.
Barn 717-354-4341 Fax 717-355-0706 • David Kolb, Mgr. 61L

HOOF TRIMMING SERVICE - providing quality service for large and small dairy and beef herds. \$10 per cow. Graduate of Hoof Care Institute. Stand up chute. 315-573-6742.

MACIK HOOF TRIMMING - Beef and dairy cattle. Hydraulic tilt table. Serving Western PA, Eastern OH, Northern WV. Phone 724-345-8501.

PROF. HOOF TRIMMING - RSW Farms LLC. Hydraulic table, competitive rates, serving MD/PA/NY. Contact Ryan 518-935-7704 or RSWFarms@yahoo.com.

PROF. HOOF TRIMMING - call for more info/available dates. 570-690-1017.

SHUMAN'S HOOF CARE - Serving dairies in Northeastern & Northcentral Penna. and the Finger Lakes region of N.Y. Call Tom, 570-418-1684.

CORRECTIVE HOOF TRIMMING - New Tuffy -tilt table. Cow comfort, professional work. Call Sam Beiler 717-222-6180.

NEED YOUR COWS clipped? Call 717-768-8345 ext 1.

STRUGGLING WITH MICE and rats? Try First Strike. Oregon Ag LLC. Call 717-656-0067.

DEAD ANIMAL REMOVAL. Call Mike at 717-855-5503.

DEAD ANIMAL REMOVAL. Removal of dead farm animals. 717-228-9500. M-F 8-4, Sat. 8-11 or text.

LIVESTOCK HAULING Local/long distance. Pa., N.Y., Ohio, Va. 814-592-2543.

SILO DEMOLITION. 717-786-6063.

HARVESTORE SILO REPAIRS, extensions, and roof replacements. Call us at 717-786-6063.

NEED YOUR EQUIPMENT, building or house pressure washed? We have the equipment to do the job. Call us at 717-644-6295.

DAIRY SERVICE TECH - servicing all brands of dairy equipment. South central, Pa. Wes Sollenberger, 814-505-6304.

CUSTOM COMBINING services. Well maintained equipment. Reasonable prices. Call 315-573-6742 for more information.

RESTORING GRANDPA'S old tractor doesn't have to cost an arm and a leg! Full service repairs and restorations. Agriculture and industrial repairs. York Co. 717-368-1354.

FARM MACHINERY REPAIRS, NH small square baler parts, Discbines, Haybines, rakes, feed mixers, discs (new blades), forage harvesters and more. 607-243-5896.

DISCBINE DOCTOR - Repairing all makes. Buying & selling. After market cutter bar, bearings, or NH/JD/Kuhn and used parts. Call ahead 717-768-7542.

SERVICE DONE ON ALL brands of fence energizers and battery chargers. Call Sensenig's Electronic Repair 717-445-9905 for your repair needs.

3 Dairy Equipment

MUELLER ONE PEN chart recorder, \$900; 12 v. agitator motor with mount, \$450; automatic start box for diesel and tank, \$850. 606-303-8916. (5/31)

3500 GAL., 2000 GAL., 1600 gal., Mueller's compressor, washer. 814-931-5860. (5/10)

5 ORBITER CLAWS, IN excellent condition. Make offer. 717-664-0597. (5/17)

1500 GAL. DARI KOOL tank. Complete compressor system. \$6000. Lancaster, Ky. 859-608-9745. (5/24)

SWING ARM AUTOMATIC take off, includes controllers, sensors. 8 available. Make offer. Shippensburg, Pa. 717-530-5607. (5/10)

60 STURDY BUILT STALLS with water bowls. Only used for 5 years. \$1,600. You remove and haul. Located in McVeytown, Pa. Contact Jeremy at 717-437-0223.

USED MILK TANKS - 400 gal. Sunset; 800 gal. Mueller OH; 900 gal. Mueller OH; 1000 gal. Milkkeeper, flat top (storage). T.H. Horning. 717-438-3104.

4' X 6' COW MATS. GOOD mat for the money and easy

to install. \$80 each, including hardware. Call 717-304-6684.

GUTTER GRATES FOR tiestall barns. Innovative design prevents hoof injuries. Call for more information and current pricing. 717-464-6476.

4 Dairy Cows

MARYLAND HERD OF 45 Holstein cows. Closed herd, low SCC. Land O'Lakes milk base also for sale. 443-786-5405. (5/31)

BUYING AND SELLING dairy herds, heifers and service bulls. Aaron Coons, 717-816-4118.

JUST FRESH, 1ST LACTATION Reg. Holstein cows. Good quality, well grown animals. 3-4 generally available each month. 570-297-5118.

5 Heifers & Calves

LOOKING FOR REG. springing heifers, fresh, 2 and 3 year olds, preferably freestall cows, to expand my herd. 814-386-0609. (9/27)

6 Dairy Bulls

DELTA-LAMBDA SON. Dam EX-90 Shottle with 30,000 lbs. of milk with 4.0 fat. 2nd dam Redman. Proven breeder. 2 years old. This is one of the best bred bulls available. \$2275. Martin-Dale Holsteins. 717-445-6548. (5/10)

YOUNG REG. JERSEY bull. 18 mos. quiet, from 11 year old cow. Fine Jersey heifers to freshen. Indiana Co., Pa. 724-397-4313 or 724-549-6314. (5/10)

B&W AND R&W POLLED homozygous Holsteins, A2A2. Some genomically tested also. Lebanon Co., Pa. Con-Gen Farms. 717-821-1454.

WANTED - Reg. Jersey bull, 12-15 mos. old. 856-478-2942.

REG. HOLSTEIN BULLS for sale. Ar-Joy Farms, Cochranville, Pa. 610-637-7423.

HOLSTEIN BULLS ready for free stalls and younger. High genomic tested bulls from contract matings and high type cow families. 610-932-6062. Call btw. 8-8:30 a.m.

BRUBACKER'S QUALITY DAIRY SALES

10 BROWN ROAD, SHIPPENSBURG, PA

Thurs., May 16 @ 7:15 P.M.

Alson & Minerva Martin Herd Dispersal

★ The Martins made the difficult decision to sell their dairy herd and they're sending only the best! We are selling 30 Holstein cows including several R&W cows as well as heifers from breeding age up to springers. Well framed with great udder promise! **These cows are averaging 75 lbs. 4.1F 3.2P and low SCC, with mostly 1st and 2nd lac!** Great udders, feet and legs! The cows are A.I. sired using good feet and leg bulls, with high components and good milk! Regular foot trimming program with **no** sore feet! The Martins have a growing greenhouse business and have decided to sell their cows and heifers, which created this opportunity to put their best cows in your barn! **Don't miss them!**

★ We are expecting a good selection of fresh and fancy, 2 and 3 yr. olds out of local overstocked herds and heifer growers. Many A.I. sired with several good Registered cows, with most on test w/ low SCC and lots of milk! **Including five fresh cows from one farm fresh less than 60 days!!!**

★ Brandt-View sends five fresh and fancy cows w/ deep pedigrees & genomics, and milking well!!

★ ALSO A NICE SELECTION OF HEIFERS FROM HEALTHY CALVES TO CLOSE SPRINGERS!

★ Reg. Tog daughter sells due June 4! Dam VG-87 Andreas x EX-91! Same family as Saber PP at Triple Hill Sires.

★ 15b good framed, breeding age heifers from one farm! Mostly Holstein with a few crosses.

★ 5 close springers with lots of potential, nice frames, good feet and legs!

★ Several breeding age bulls out of good cow families!

★ Reg. R&W Amazing-Red son sells, proven breeder! Dam Coffee-Brook Darling-Red!

★ Reg. Jersey bull sired by Dixon! Dam WF Motion Tiara EX-93, 5-06 305 19,250 4.3F 3.5P! Mgd EX-95, 11-07 305 18,650 5.2F 3.5P!

★ 100 Gallon milk mixer, will feed 100 calves, also 10 bucket holder with buckets.



NOTE: Need that special cow or just a good replacement? Come spend the evening with us! **GET YOUR BUYER NUMBER BEFORE SALE STARTS AND GET ENTERED FOR A FREE DOORPRIZE!** Overstocked? Fresh cows and heifers are in demand! All cattle vet checked and vaccinated. Trucking available.

Can't make the sale? You can now participate online at Cowbuyer.com. For on-line questions, call Katie Shultz 717-543-7883.

Manager/Auctioneers
Jason Brubacker Lic. AU5608
717-729-0173

Darryl Jones Lic. AU5194
717-226-0776



Sale Barn
Ivan Brubacker
717-414-6657

Pedigrees
Art Kling

* NEXT SALE - JUNE 20th, 2024
SPECIAL *12 YEAR ANNIVERSARY* DAIRY COW AND HEIFER SALE *

KIKO AUCTION

EXCITING REAL ESTATE OPPORTUNITY!

296 Acres Gently Rolling Land
2/3 Productive Farmland, Balance Wooded
To Be Offered In 3 Parcels And As Entirety
3/4 Mile Of Road Frontage, Adjoins Hueston Woods State Park
One Hour From Dayton And Cincinnati, OH, Good Elevation
Oxford Twp., Butler Co., Talawanda School District
Live Auction With Online Bidding

Absolute auction, all sells to the highest bidders on location: 6822 Morning Sun Rd., Oxford, OH 45056. Directions: From Oxford, OH take N. Main St. north, turns into Morning Sun Rd. (SR-732) for 10 minutes to auction OR from I-70 take exit 10/US Route 127 south to Eaton, OH then take SR-732 SW (approx. 15 minutes south) to auction.

Friday, May 17, 2024, 12:30 P.M.

Real Estate: 296 acres gently rolling land. The Delp family has had ownership for many years. The original farm home and buildings were demolished years ago, but the farm lane and park like setting still exist. Approx. 185 acres total of productive farmland (rented for 2024 season) balance of land wooded w/ a small lake and pond. Soils include Fincastle, Russell-Miamian, and Xenia silt loams. All mineral rights owned by sellers to transfer. Approx. 51 acres lays on west side of Morning Sun Rd. and adjoins Hueston Woods State Park. Buyer to receive new survey. Land is a great investment you can enjoy and watch the sunset on. Convenient location, you better check it out!



Land Offered As Follows:

Parcel #1: 6822 & 6896 Morning Sun Rd. Approx. 186.6 acres w/ approx. 1,800 ft road frontage. Approx. 125 acres tillable farmland. Original farm lane leads back to wooded area w/ small lake. Good elevation. Butler Co. parcels H361000200013, 1000009, 1000008, and 1000007.

Parcel #2: Morning Sun Rd. Approx. 58.2 acres. Approx. 49 tillable farmland, all in one field. Balance of land wooded. Over 1,800 ft road frontage (adjoins parcel #1) to the north. Parcel H3610001000024.

Parcel #3: 6807 Morning Sun Rd. Approx. 51.2 acres lays on west side of road. Over 700 ft road frontage. Front 19 acres tillable farmland. Rear 32 acres wooded w/ pond. This parcel adjoins Hueston Woods State Park. Parcels H3610002000011 and 2000012.

Note: Parcels to be offered bidders choice and as an entirety through a multi-par live auction process. It will be sold whichever way brings the most. This is an absolute auction, circle the 17th on your calendar and plan to attend this exciting event! Tent, chairs, refreshments and restrooms provided. Call auctioneer today for details on how to buy, financing, and using your current real estate to buy this land. Bank financing available to qualified buyer, Farm Credit Services, 937.533.4442.

Terms On Real Estate: 10% down auction day, balance due at closing. A 10% buyer's premium will be added to the highest bid to establish the purchase price. Any desired inspections must be made prior to bidding. All information contained herein was derived from sources believed to be correct. Information is believed to be accurate but not guaranteed. Property to be offered as a Multi Par auction and sold whichever way it brings the most.

Auction By Order Of: Delp Ellis Enterprises, LLC and Rose Land Enterprises, LLC

Realtors/Auctioneers: Peter R. Kiko, Sr., 330.705.5996, peter@kikocompany.com and Kristen Kiko, 330.234.7110, kristen@kikocompany.com

KIKO Auctioneers AY-000170L
(330) 455-9357 • www.kikoauctions.com

BULLS FOR SALE & LEASE
- Reg. Holsteins, any age out of dams with records to 30,000M, 1200F. Stump Acres, York Co. Call 717-792-3216.

7 Semen, Embryos

FULL BLOOD WAGYU embryos by top sires, including Mayura L10, Gateway Gatekeeper and Aurubial United. Contact Doug at 410-984-5692. (5/31)

ANGUS SEMEN, \$5/UNIT. Most Holstein cross calves are solid black. 717-354-8449, ext. 5. (5/17)

MVE MILLENIUM 2000 XC-20 semen tank, excellent condition, full of liquid nitrogen, \$600. Also, Normandy semen. Stephen Uhl, 223-216-0160.

HELSEL-HILL HAS expanded. Call or text Keith Helsel for No Bull sires, Blondin sires, Resolution-Red, Furnace Hill Zas Endure, and more. 814-515-5455.

CUSTOM COLLECTING - WE custom collect your bull at our facility. Semen is processed with high quality standards at very competitive rates. We also offer short-term housing options during collection. Triple-Hil Sires 855-955-2100.

DONEGAL-CREEK BAXTER Pedro-ET, reg # 139932533. He is EX-94 AAA (4352). From 5 EX dams- 94, 90, 91, 91 & 95. Dam is 94 pt. Outside daughter, still in herd at 10 yrs. old & looks half her age. Sire stack is Baxter, Outside, Rudolph, Conquest, Starbuck, Citation R, Elevation. Very well balanced bull siring the right kind. Strength with dairyness. High productive life, low SCC, high conception. Early daughters are milking great & look better than their dams. Priced at \$14 for 20 units or more. Joe Wivell 717-471-5260.

9 Equipment & Machinery

BADGER FORAGE wagon, 16 feet, 12 ton tandem axle, field ready, stored inside, \$1950; 6 Keystone Concrete 4x12 cattle slats, seconds, never used, \$200/slat. 717-548-3039. (5/17)

SOLLENBERGER SILOS
5778 Sunset Pike
Chambersburg, PA 17202
Poured Concrete Silos for Farm and Industry Since 1908
For information call:
Ken Mansfield
717-503-8909
www.sollenbergersilos.com

AS Precast Systems, LLC
Producing concrete since 1923
**FEED BUNKS
BUNKER SILOS
CATTLE GUARDS**
NCPA certified plant
Installed on site
717-369-3773
www.precastsystemsllc.com
5877 Bullitt Rd. Greencastle, PA 17225

FORAGE HARVESTER, self-propelled 2014 John Deere 7380 with 8 row head and kernel processor. Well cared for, only 1560/2300 hours. Lots of new parts. 717-400-7917.

CLAAS FORAGE harvester. 2012 Jaguar 930 with kernel processor. 494 series, 4WD, autolube, rear weights. 2665/3700 hours. New blower paddles and shearbar. 6 row head available. \$134,500. 717-400-7917. (5/31)

2016 CLOVERDALE 420 TMR mixer. One owner, right side discharge. \$24,500. 717-926-0438.

FORAGE HARVESTERS and heads available. Inspected, serviced/repaired and certified for warranty. Also can buy "As-Is". Claas, John Deere and New Holland. For details call 717-400-7917. (5/17)

FOR RENT: E RISSLER 330 trailer TMR mixer, \$30/day; IH Rissler 510 TMR cart, \$10/day. Delivery avail. Myerstown, Pa. 484-793-2179.

ROOFERS BUGGY-RENT for \$125/day or \$500/week. Lancaster Co., Pa. Call 717-808-4155.

10 Feeds

1ST, 2ND & 4TH ALFALFA tested, 3x4x8' Chinook dried

straw. Delivered or FOB. 610-767-2409, heidelhol-lowfarm.com.

BUYING DAMAGED GRAIN. Trucking is available. Call 717-575-5197.

CERTIFIED ORGANIC KELP meal. Redmond minerals. Dealers available in select areas. Hess Farm Supply. 717-354-9492.

FASTRACK - Improve milk production, increase feed utilization and improve herd health with Fastrack direct fed microbials. Contact Karl at 740-504-2859 or email klbss@columbus.rr.com.

11 Hay

HIGH QUALITY 1ST cutting baleage. Forage test available. \$40 each. 443-240-5785. (6/7)

HIGH QUALITY 1ST & 2ND cutting grass hay, 3x3x7 bales, low potassium. #1 hay, tested. Lebanon Co., Pa. Con-Ger Farms. 717-821-1454.

CERTIFIED ORGANIC mixed grass and clover hay. Call from 7a.m.-4 p.m. 717-463-9731, leave message.

ROUND BALES OR LARGE squares. Delivered by ton

loads. Coons Farms. 717-816-4118.

HAYBUSTERS - Dairy and beef quality alfalfa, low K hay and straw. Large and small squares. Call Mark at 800-371-7928, or visit www.haybusters.com.

12 Straw & Bedding

CHOPPED STRAW in 3x3x6 bales. Good for bedding or TMR mixers. Available now. Lebanon Co., Pa. Con-Ger Farms. 717-821-1454.

HIGH QUALITY SAWDUST available for delivery. Great sawdust for dairy and beef

cattle. Call 301-334-6212 for delivery range, pricing and availability.

USE BALED SHAVING in your dairy barn. You'll love this very fine pine bedding. \$5.50/ 40 lb. bag. 610-273-3602.

HAY OR STRAW-any type or quality. Call 717-253-6049 for pricing.

15 Vehicles & Trailers

TRAILER PARTS, TOWING accessories, trailer hitches, and cushion hitches. UPS to your door. Weaver Distributing. 800-Weaver-D. Save!

Replacement Silo Doors

Many Kinds In Stock

- Marietta
- Fickes
- Madison
- Terre Hill
- Lancaster
- Ribstone

Silo Door Hardware

- Butterfly Hinges
- Latches
- Steps
- Ladder

Silo Doors Made To Order
Bring Pattern of Old Door

Willow Road Silo Doors

Daniel Beiler
624 Willow Road
Lancaster, PA 17601
717-394-1004

WHOLE SHELLLED CORN

• WHOLE COTTONSEED • CORN • 48% SOYBEAN MEAL • ROASTED SOYBEANS • CANOLA MEAL • LINSEED MEAL

TRIPLE • M • FARMS

Custom Feed Mfg.

WE MIX FEED ACCORDING TO CUSTOMER AND NUTRITIONIST FORMULAS

Also Available:
BULK COMMODITIES

Call Us At:
(717) 272-3225

MINERALS • NON-GMO

• TURBO MEAL • AminOleic • BLOOD MEAL • BEET PULP • FATS •

3/32" FINE GROUND CORN

TRAMILDA Milking Herd Dispersal

Thursday, May 30, 2024 at the Farm Montezuma, GA

LOTS OF MILK!

With the heifer pens overflowing the decision was made to disperse most of the milking herd. Opportunity Abounds!

<p>Savage-Leigh Charisma Betty EX-91 92-MS Grand Champion Clemson Spring Show 2024 She Sells due in November, averages 10 embryos per IVF</p>	<p>Petitlerc Lambda Smily VG-88-2Y 1st Place Jr 3-Yr-Old Clemson Spring Show 2024 She Sells! Lambda x 86 Gold Chip x 89 Saltamachia</p>	<p>JM-Valley History Juna EX-90 She Sells due in October, 4th calf 4-Yr-Old for Fall! History x 87 Cinderdoor x 97 June</p>	<p>Nisly-Gen Rager Donut-Red EX-91 92-MS She Sells due in August to Hulu! Rager from the Dellias, Big Time 4-Yr-Old for Fall!</p>
<p>Ty-D Chill Slice EX-93 Reserve Grand Champion Dairyland Classic 2022 She Sells due in July!</p>	<p>Miss Lambda Vero She Sells due in September to sexed Hulu! Milking Yearling for Fall, Lambda x EX-96 Black Velvet</p>	<p>View-Home Meridian Iowa VG-86 Many Dtrs and Gr Dtrs Sell, scores up to EX-93!</p>	<p>Tramilda Gameday Nicki 3074G 1069NM She Sells ready to Flush Gameday x Noble x Duke</p>
<p>Cherrypencol GD Lind 673 2987G 1120NM She Sells bred to Hardin, Offspring over 3100G and 1200NM Gameday x Legacy x Jedi</p>	<p>Cherrypencol G 1000 3001G 1072NM She Sells bred to sexed Hardin, Several RC dtrs over 3000G Gameday x Legacy x Jedi</p>	<p>Kilgus Barnabas Chelsey VG-88-2Y She Sells bred to sexed Chocochip! Special Sr 2 for this year! Backed by 5 Gen EX!</p>	<p>Vierras Kid Rock Scout VG-88 3rd Sr 3-Yr-Old Clemson Spring Show She Sells due in October to sexed Hidalgo Kid Rock x EX-91 Premier Sisown x EX-95 Tequila Shot</p>

Sale Managed By:
TRADITION AUCTION SERVICES, LLC
TRAINED BY THE BEST TO BE THE BEST!

Murfreesboro, TN • Firm Lic #5762 • 615-869-0029
catalogs online at www.traditionauctions.com
For more info contact:
Lynn Lee 615-390-6312 • Bob Morton 931-842-1234

Sales Force
Daniel Brandt 717-821-1238
Chad Kreeger 517-294-3484
Andrew Hetke 715-609-0134
Kelly Barbee 704-796-0952
Irvin Yoder 478-244-0301

Troy Yoder Family
Troy 478-244-2172
Austin 478-244-1567
Terrance 478-244-6911

RHA 2X 26,385 4.0%
1051 3.4% 890
Cows averaging 87 lbs milk!
250 Milking Cows
25 Dry Cows
15 Springers

16 Fencing

TIMELESS FENCING - The post is the insulator. Versatile design is self-insulating and easy to install for sheep, goats, cattle and horses. Allegheny Meadows. 814-285-1541.

17 Silos

SILLO UNLOADER WINCH; Harvestore silo sheets. 717-363-6741.

USED A.O. SMITH model 1250 Slurry Pump with agitation nozzle and load out line. 717-463-9731.

SILLO DEMOLITION. Contact Beiler Silos. Call 570-745-3574.

HARVESTORE SILLO ROOFS, affordable white or stainless. Solve spoilage. Sheet replacement, sillo demolition. Parts and repairs on Harvestore and stave silos. 717-517-2080.

HARVESTORE SILLO REPAIRS, also demolition and removal. Use replacement blue or white sillo roofs, door frames, doors, lids, breather bags. Installation available. 717-768-0452.

BEILER SILOS - SILLO PARTS, sales and service. New and used silos. Shotcrete relining. Foundation repair with Shotcrete. Tear down and rebuild. Sillo doors made to order. 20 years experience. Serving Lycoming and surrounding Co. Jersey Shore, Pa. 570-745-3574.

I BUY USED SLURRY-STORES. 315-404-6721 or 315-495-6506.

SILLO DOORS, galvanized steps and latches, poly door panels cut to size for all types of silos. Quality products are always a good investment. Meadow Springs Farm, Gordonville, Pa. Sales brochures and quotes call J. Elmer 717-768-3337 ext.1.

RE-BUILT SILOS, New or used, relines, parts and repairs. Call SR Silos 717-527-4103.

S & S SILLO SERVICE - We erect silos, repair silos with shotcrete, repair concrete walls, stone walls, and foundations with shotcrete. Serving the shotcrete and sillo industry for 25 years. 610-273-3993.

MANUFACTURERS of sillo doors and hardware. Double thick tongue and groove cedar poly and plywood doors. Hardware is powder coated. Agri-Door. Call 717-949-2034.

19 Real Estate

NORTHERN PA. year round home with spacial property. Gorgeous mountain views, near State Gamelands and developed bicycle trail. Sits high and dry. 717-856-2024.

THE GET-R-DONE REALTOR. Rodney Rice, 717-729-9501. 50 years serving farmers selling, buying, auctioning. Landfarmrec-JAK Real Estate. 717-753-5510.

TO BUY/SELL REAL ESTATE in Pa. call Thomas Hershey at 610-209-7096. Hershey Farm Agency, Inc., HersheyAuctionLLC.com. 800-880-3831.

BEILER-CAMPBELL Realtors and Auction Services, Farm and Land Division. Are you looking to purchase or sell a property in Pa. or Md. Call Chris Taylor, office mgr., 888-786-8715 for an auctioneer or realtor.ctaylorfarms.com.

20 Wanted

ANGUS BULL TO LEASE in June and July. 717-529-1233, ext. 1. (5/24)

BUYING OLD ISSUES OF Holstein World, Jersey, Brown Swiss, etc. (all other dairy cattle breeds) magazines, sale catalogs and sire directories. 716-255-5625.

YOUNG COUPLE LOOKING for 30-40 milk cows. Prefer Holsteins, but will consider color breeds. 1st lactation or bred heifers due in next couple months. Central Pa. 570-971-5863.

LOOKING FOR REG. springing heifers, fresh, 2 and 3 year olds, preferably freestall cows, to expand my herd. 814-386-0609. (9/27)

VIRGINIA MILK commission base. 610-932-8404.

CUSTOM GRAZING operation in Canandaigua, N.Y., looking to add clients for the summer grazing season. Looking to take on another 40 head of heifers, dry cows, or steers. Pay based on head/day. All new hi-tensile fencing. Daily moves. 315-573-6742. (6/28)

BUYING HARVESTORE silos & Slurrystores. Call 717-517-2080.

I AM STILL LOOKING FOR used books and publications about dairy farming, printed early to late 20th century. Interested in all farming related topics. Paying cash. Phone Owen Backus, 608-479-0811.

I BUY TRUCKER HAT collections. 215-896-5609.

21 Opportunities Wanted

SEEKING WORK ON family farm with small house. Most any area. (West Va., please call). 717-816-9693.

YOUNG FARMER looking for a dairy farm to rent. Ideally rent to own situation in Pa. or Md. 717-824-1320.

FINE GROUND *Wood Bedding*

Dry, Absorbent BEDDING For Sale

14 yd, 30 yd, and 110 yd loads
Call for Pricing

Buy in bulk and save!

BEILER INDUSTRIES 717-768-7667

PUBLIC AUCTION

Saturday, **MAY 18**, Starting 11 a.m.



LAKEVUE FARM COMPLETE REGISTERED HOLSTEIN HERD DISPERSAL

13723 GREENWOOD RD., HUNTINGDON, PA.

130 Head: 72 milking, 58 heifers & calves
RHA 23,969 932 749 • 1 EX • 34 VG • 38 GP

39-1st lactation • 27-2nd lactation • 30-3rd+ lactation.

PLUS, AN AMAZING SET OF BRED HEIFERS & SHOW AGE CALVES

The Couch Family has bred 64 EX and 307 VG cows including 12 EX-92, 4 EX-93 and 2 EX-94. Cows are tiestall/freestall/parlor trained.



Lakevue Solomon Marvelous EX-91

Marvelous made her mark at the 2023 PA Spring Show bringing home Res. Grand & Int. Champ of the Jr Show plus Res. Int. Champ in Open! She hails from the deepest Homebred cow family at Lakevue: The Martys! Her Fantastic Hanans Spring Yrlg sells. A Spectacular 4 yr old VG-88 EX-MS Im A King sells due 7-25 to Eye Candy! 5 more Martys sell!



MS Ubercrest Lake Layla Rae VG-85

Twice nominated All-American: Jr 2 in 2016 and Spring Yrlg in 2015 & out of an EX-91 Windbrook x EX-91 full sister to Liberty Rae EX-95! Six head sell from this remarkable Roxy family including VG 2yr Sidekick Jr 3 due back 6-25 to Doc w/ a BIG Future & her ThunderStorm Sum Yrlg; VG-87 Atwood 4 yr & a stellar Hanans Sum Yrlg.



Peachey Tundel Jupiter-Red VG-88 EX-MS

Jupiter put the Lakevue "J" family on the map: numerous show winners and loads of VG/EX cows! Same cow family that produced Baculum Jazelle 2E-92. 20 plus "J" members sell including Jr 2 RED Revere due sale time from Jazelle's line & Red Revere Spring calf & her promising Jr 3 Aflame dam milking a load!



Grace-Leigh W Sneezy-RED-ET

This Sharp Warrior won the Fall Calf class against the B&W at NE Spring Nat'l. Her full sister sells with the same cut! Their dam is Sneezy EX-94, All-Am in 2017 from the same family as Seisme-RED 2E-97.



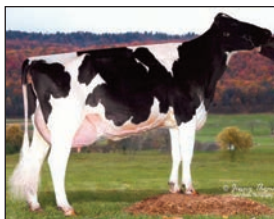
Cameron-Ridge Atwood Lyn-ET 2E-92

Sporty Sidekick Summer Yrlg & her GP-84 (not for long) Radio due back 7-25 to Luster-P sells from VG-87 EX-MS Hero x Lyn, then 2E-95 Cameron-Ridge Dundee Lasita & 4E-96 Charles Lisa. Also, just fresh Lexor cranking the milk back to Lyn.



Lakevue Epic Hydrangea-ET EX-91

20 head sell from the Hydrangea family: Loads of milk! Sires include Doc, Unix, Parfect, early Architect and Energy fall calves. Doc Fall Yrlg due x 86 Lyle x 87 Callen x 86 full sis to Hydrangea will stand out! Many more like VG-86 @ 2-6 Crushabull Jr 3!



Budjon Terrason Dolly 2E-93

11 from Dolly's family sell including a Marvelous Moovin Fall Calf, Destiny a VG-87 (not for long) Luis milking 122# & her 12-23 Winners Circle son plus 2nd calf Lexor daughter just fresh & her pretty MJ Spring Yrlg.



Lakevue Talent Shakira 2E-91

25 descendants of Shakira sell. She's a 7th gen EX from the Walkup Lou Anns. Beautiful cows VG-87 Im A King, Doc due 6-19, VG-88 Kenosha, VG-87 Doc milking 113# Reeve-Rick & Airlift. Heifers by Tatoo, Sidekick, Tractor & Upgrade. All Quality!

MORE HIGHLIGHTS

Fancy Fall Calf by Avalanche, sister to Ubercrest Analyst Morgan 1st Summer Yrlg at NYSS & PA Spring plus RES JC PA Youth Show & HM JC Open in 2022.

8 Tobis sell including Dynamite Dropbox Winter Calf & her VG Doc milking 100+ back to Tobis & Tina via Elnad Takita.

Six from the Ladycrest family including just fresh Sr 2 Sidekick & her 3-24 Dropbox!

Lovely RC Latenite bred heifer due in fall back to Talent Licorice EX-95.

Jr 2 Landslide VG Brush back to EX Boss Bossy. Six more sell from this Pronto Bonita 2E-91 Family.

RED Alert! RED Jr 2 Folke & her Rifle March baby sell from VG Armani x 90 Secure x 88 Advent Toot. 7 more from Toot including another sweet RED Spring Calf by Analyst.

2nd calf Cheers due back 10-16 to Lizzo, granddaughter of C-Cove-NV Reflect Lexus 3E-94.

1st calf RED Aflame cranking 84# & due 7-16 to Hefner-Red, back to Pineybrook Crystal EX-91.

AUCTION FRALEY COMPANY, INC.

1515 Kepner Hill Rd.
Muncy, PA 17756
570-546-6907 | fraleyauction.com
Lic. AY001971

KISH VALLEY DAIRY SALES

Located on corner of S. Walnut St. & Front Mountain Rd., Belleville, PA.

MONTHLY CONSIGNMENT DAIRY SALE

3RD FRIDAY OF EVERY MONTH

AFTERNOON SALE

Friday, May 17 at 1 p.m.

Please have all consignments in by 10:30 a.m. Friday.

Fresh cows, springers,
bred & open heifers, service-age bulls

Other consignments are welcome!

Lunch stand and restroom facilities at ringside.

FOR MORE INFO:
SHERMAN L. GLICK
717-935-5195
717-483-6565

AUCTIONEER:
DON CHESNEY - AU-005039
Michael P. Yoder, Pedigrees
717-437-5846

Zimmermans

Glasslined Storage
Oakland Mills, PA
36 Yrs. Experience • Silos & Tanks
717-463-9731
www.silosandtanks.com

Pre-Owned Slurrystores® and Harvestores®
in Inventory - Ready to be built

COMPARE OUR PRICES & QUALITY

FUSION TANKS & SILOS
AISTOR Stainless Steel Engineered Roofs
Zabel Equipment Hydraulic Manure Pumps
DRYHILL Manure Pumps

aFs automatic Hammermills
E. RISSLER MFG. Spiro Mixers
Quality Parts, Inc. Harvestore® Aftermarket Parts
Challenger Slurrypump HOT-DIP GALVANIZED

Rebuilt Harvestore® Unloaders In Stock - installed with a 2 year warranty
WE SERVICE WHAT WE SELL

SERVICE DEPOT

Alvin Eberly Harrisonburg, Va. 540-820-0818	Norwain Acres Orrville, Ohio 330-621-1276	Zimmermans Oakland Mills, Pa. 717-463-9731
---	---	--

Zimmermans is not affiliated with CST Industries, Inc.

INDIVIDUAL SEEKING herdsman position or looking to rent approx. 50 cow dairy farm. 814-442-5782.

22 Help Wanted

MILK, ICE CREAM Processing Manager wanted. Pasteurize, homogenize, jug milk, make ice cream. Small family creamery on the farm. Pine View Dairy. 717-587-6185. (5/10)

SUNY MORRISVILLE (NY) seeks an Assistant Professor to support our Animal Science program. Visit our job site to learn more. (5/24)

LOOKING TO HIRE A herdsman to focus on herd health and reproduction. Milking 350 and planning to expand. Housing available. 814-386-0609. (5/10)

ROBOTIC DAIRY IN Perry Co., Pa., seeking full-time Herd Manager. Housing and health insurance options. Driver's license required. Email: leeanmclaughlin.ef@gmail.com or call 717-636-3489 to apply. (5/24)

23 Pets

OUT OF RESPECT FOR animal welfare, "Pets or Dogs Wanted" will not be accepted as classified ads. We will continue to accept household pet "For Sale" ads. Please take care when purchasing, selling or giving away a pet, keeping the animal's well-being in mind.

24 Seeds

ALFALFA, GRASS MIXES, oats and sorghum. Hefty brand and Augusta seed corn. Jacobsen GT soybeans. Leabrook Ag, call us at 717-898-9576.

NEED SEED OATS? We can obtain almost any variety. Also publish quarterly oat marketing newsletter. \$12/year. J.C. Goss, Box 312, Hurley, MO 65675, 417-708-7860.

KING'S AGRISEEDS, feeding your farm's future through high energy forages, and soil building cover crops. Lancaster, Pa. 717-687-6224, info@kingsagri.com, www.KingsAgriSeeds.com.

CORN SEED. PRICING starting at \$129/bag (before discounts). De Dell Seeds, the leaders in Non-GMO corn. 519-264-CORN.

ALFALFA, CORN, SOYBEANS and more! Call us for all of your crop needs. Growmark FS-Eighty Four. 724-222-4303, www.growmarkfs.com.

17 foot Goliath Unloader, good condition. Call 717-363-6741

SOYBEAN ROASTING ON YOUR FARM

- Full-fat roasted soybeans for maximum feeding value
- High-energy, bypass protein and palatability
- Toxic enzymes and molds destroyed
- Custom roasting in MD, DE, PA & Southern NJ

HORST GRAIN ROASTING
Chester Co., PA
(717) 926-4310

TRY THE NEW WINNER 2015 World Forage Analysis Superbowl - Alforex Hi-Gest 360 Alfalfa, cutting edge digestibility. Hess Farm Supply 717-354-9492.

SEED CORN - Partners brand, Mid-Atlantic, Prairie Hybrids. Lots of customer satisfaction. Dairyland hybrid alfalfa's quality yield digestibility. Oregon AG, 717-656-0067.

HUBNER SEEDS - Alfalfa, Corn, Soybeans, call Merle Stoltzfus. 717-224-0700.

APPLY AGROWSIL TODAY Quick and long lasting PH increase, increased yields,

soil nutrient release, disease and stress tolerance, and drought tolerance. 1-800-850-0527.

25 Miscellaneous

SAVE TIME, SEED AND fuel with a GPS auto-steering kit. FJDYNAMICS AT1 Auto Steer Kits & RTK Station. 1" accuracy and no subscriptions required. 610-451-8023. (6/14)

CUSTOM MADE CLEAR poly carbon doors, including custom manufacturing and repair. Also, hot beds and little greenhouses, stainless

steel water troughs, horse barn grills, gates and doors. Sunnyside Welding, Manheim, Pa. 717-361-8853, x 4.

STOP FLIES. GREAT products. Fly parasite plans. Cedar solar traps (the best). Zapper that just keeps zapping. www.dairyflyparasites.com. 888-771-3276. Useful Farm Products.

LOOKING TO GET RID of insects? Buy bluebird or tree swallow houses. Plus more. 717-529-2326, ext. 1.

CLEANING OUT YOUR attic? We'll take any magazines, newspaper, books, etc. for old man to shred for

horse bedding. Call now. 717-529-2326, ext. 1.

SEE FARMING IN N.Y. through the eyes of an 11 year old. Visit Youtube and search "4th Gen Dairy Farmer" for videos. Call 716-474-1705 for more information.

HORSE, DONKEY AND calf blankets. Reasonably priced. Dealers welcome. Call 717-361-4474.

POLY SILO DOORS - Steel horse hitches; pine shavings; pine bedding pellets; Meadow Springs Farm, Gordonville, Pa. 717-768-3337, ext. 1.

PAINTED MILK CANS - farm scenes \$200 or have one custom painted with cows, horses or any family pet. Carroll County, Md. 410-259-1276.

OLD AERIAL PHOTOS of your farm or home dating back to 1963. Nathan Lewis 888-402-6901 or vintageaerial.com.

27 Livestock

ANGUS BEEF, READY FOR slaughter. 570-488-6596.

Microbiology Nutrition with Smartbacteria

P-ONE™

Stabilize the Rumen and Maximize Energy
P-One, the microbiology, is fed daily and contains eight of our meticulously researched and developed Priority Smartbacteria strains. These strains stimulate lactic acid utilization in the rumen and maintain a healthy population of beneficial bacteria in the lower intestinal tract.

&

OCEAN MINERALS™
the Smartbacteria catalyzer

A proprietary combination of Seaweed derived ocean calcium, magnesium, and numerous other minerals act as a Smartbacteria catalyzer, thus creating the near perfect natural environment to initiate bacterial growth in support of Microbiology Nutrition.

INDUSTRY FIRST
EXPERTLY FORMULATED

 **priority**
IAC™
the Smartbacteria & Nutrition Company™

920-682-0264
priorityiac.com



©2024 Priority IAC, Inc. All rights reserved.



**DON'T JUST
ACCEPT CHALLENGED FEEDS.
COMBAT THEM.**

AKMC

**SCAN
HERE**



Southeast PA
Regional Manager:
Larry Wenger
Leola, PA
(717) 371-6226

Kirkwood, PA
Les Hershey
(717) 989-1808

Manheim, PA
Steve Kauffman
(717) 940-4474

Manheim, PA
Brent Neely
(717) 371-7391

Lancaster Area PA
Regional Manager:
Chad Martin
Brownstown, PA
(717) 314-2460

Lebanon, PA
Noah Gesford
(717) 805-4075

Lititz, PA
Scott Forbes
(717) 572-6182

Newville, PA
Kyle Kotzmoyer
(717) 422-1356

Central/Western PA
Regional Manager:
Dan Ingle
Tyrone, PA
(814) 935-8610

Centre Hall, PA
Keith Hershey
(814) 571-8795

Kittanning, PA
Matt Smith
(724) 525-0334

Millmont, PA
Ken Heimbach
(570) 847-9150

Watsontown, PA
Jim Ulmer
(570) 490-4166

Winfield, PA
Keith McCool
(570) 847-8645

South Central PA
Hollsopple, PA
Nathan Spory
(814) 341-9134

Chambersburg, PA
Brian Horst
(717) 360-0483

Shippensburg, PA
Ed Okuley
(717) 816-6082

Area-wide
Tyrone, PA
Dave Russell
(814) 935-2640

Watsontown, PA
Don Sanders
(570) 713-4393

PA Warehouse
Lititz, PA
(717) 581-1558



"CAPTURING THE NUTRITIONAL VALUE IN FEEDS IS THE KEY TO PROFIT."